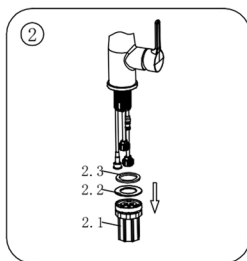
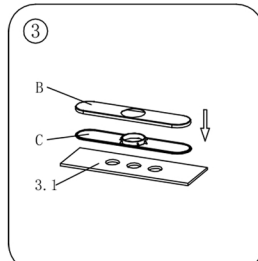


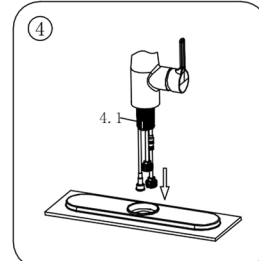
1. Close the water supply valve under the sink or the water in the main water supply area, disconnect the water supply pipe, and remove the old faucet.



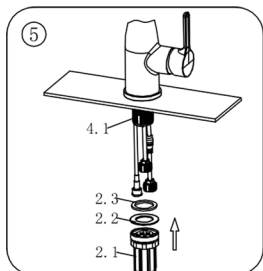
2. Take out the tap and remove the quick loading nut (2.1), iron gasket (2.2) and rubber gasket (2.3) from the tap.



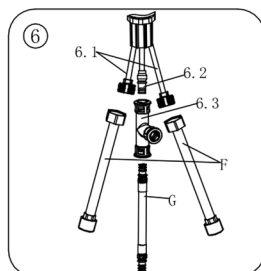
3. If it is a three-hole sink, select the installation panel. Place the bottom plate (C) and panel (B) on the three mounting holes in the sink (3.1). If you install without a panel, skip to step 5.



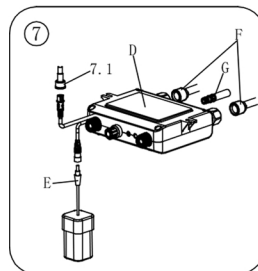
4. Place the tooth tube (4.1) of the faucet through the holes of the panel and the sink over the panel.



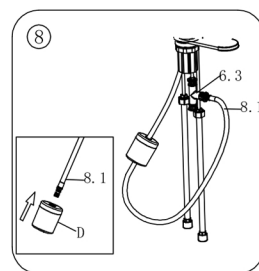
5. Place the tooth tube (4.1) of the tap through the hole of the sink above the sink. Under the sink, install the rubber washer (2.3), iron washer (2.2) and quick nut (2.1) on the tooth tube (4.1), tighten the quick nut (2.1) and fix the faucet on the table.



6. Move the inlet pipe (6.1) slightly from the outlet pipe quick joint (6.2) and be careful not to kink the copper pipe. Push the end of the hose set (G) into the three-connect quick connector (6.3) and the three-connect quick connector (6.3) into the outlet pipe quick connector (6.2). Then spin two hoses (F) into the two ends of the inlet pipe (6.1).

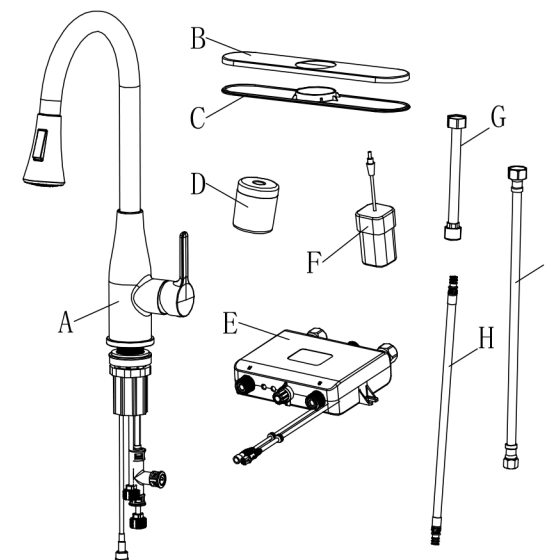


7. Turn two hoses (G) into the cold side outlet end of the control box (E) and the hot side (C marked on the shell). Push the end of the hose set (H) into the fast interface of the control box (E), then connect the battery box (F) to the red outer wiring port of the control box (E), and connect the induction assembly (7.1) to another connection of the control box (E).



8. Put the weight (D) into the drawing tube (8.1) for the appropriate position, tighten the weight (D) to fix it in the drawing tube (8.1), and then push the drawing tube (8.1) into the middle hole of the tee quick connection assembly (6.3).

Induction Thermostatic Pull-out Faucet



Part List

Number	Name	Quantity
A	Faucet	1
B	Panel	1
C	Baseplate	1
D	Gravity ball	1
E	Control box	1
F	Battery case	1
G	Hose	2
H	Hose group	1
I	Inlet pipe	2