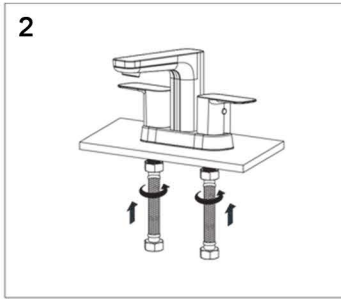
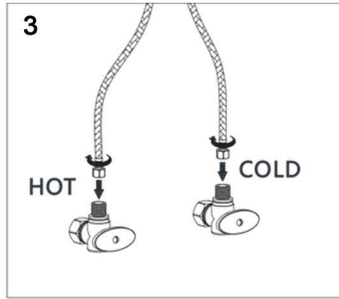


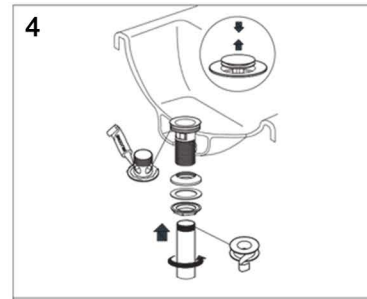
1. Install the faucet through the countertop.



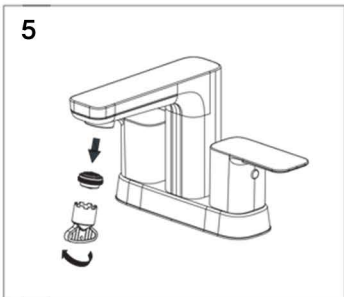
2. Attach the hot and cold supply lines to the faucet shanks.



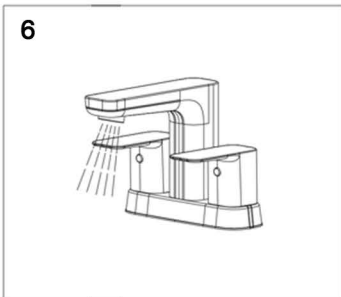
3. Attach the open ends of the water supply lines to the hot and cold shut-off valves and tighten with an adjustable wrench.



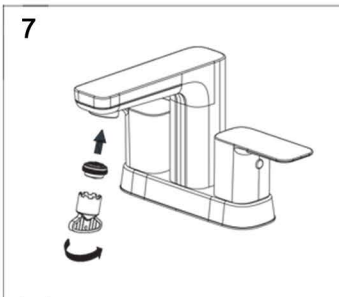
4. Apply a thin bead of putty/silicone onto the flange insert the drain body into the sink slide the nut up and thread it counter clockwise on the drain body underneath the sink until it is firmly screwed to the bottom of the sink.



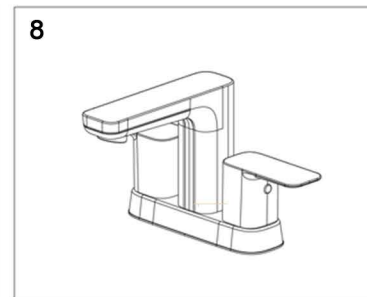
5. Remove the aerator from the spout, turn on the shut off valves. Check for leaks on supply line connections.



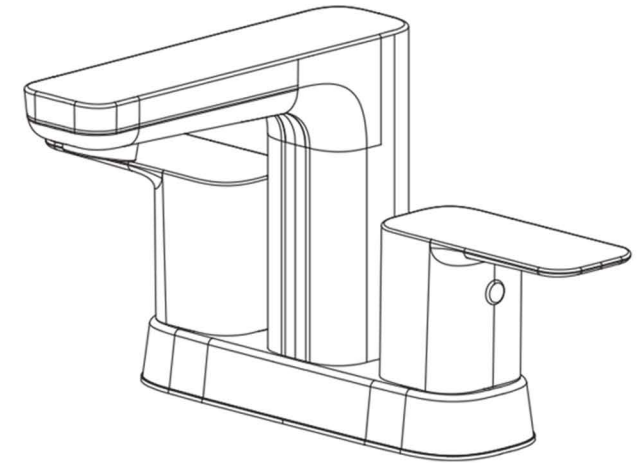
6. Flush out the water lines of any possible debris. Close the pop up assembly and fill the sink with water to check.



7. Replace aerator.



## Two Handle Lavatory Faucet



KCLT0042