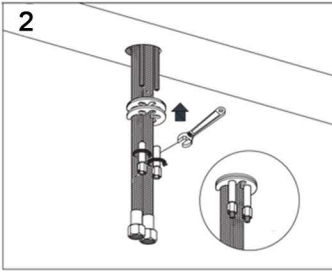
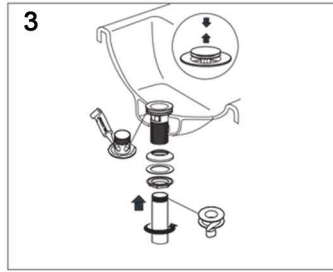


1. For single hole installation insert the hot and cold supply lines and shank through the hole in the countertop.

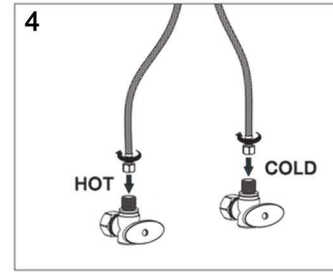
1.1 For a 3-hole installation insert the base plate panel into the base plate and slide it onto the faucet shank. Insert the hot and cold supply lines and shank through the hole in the.



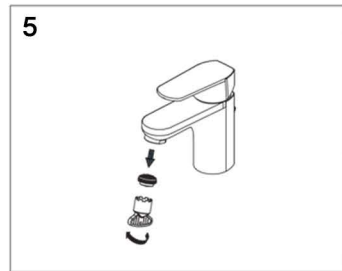
2. Install the rubber washer, metal washer, and mounting nut onto the faucet shank in that order underneath the countertop. Tighten down the nut ensuring the faucet is in the proper position.



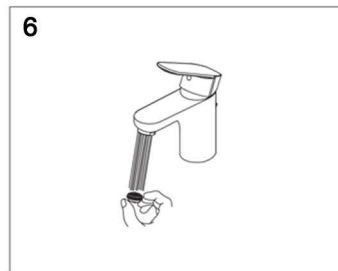
3. Apply a thin bead of putty/silicone onto the flange insert the drain body into the sink slide the nut up and thread it counter clockwise on the drain body underneath the sink until it is firmly screwed to the bottom of the sink Do not over tighten the nut.



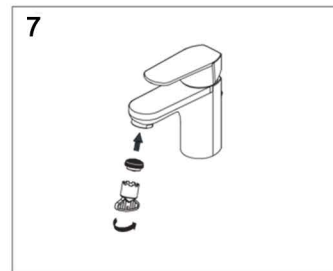
4. Attach the open ends of the water supply lines to the hot and cold shut-off valves and tighten with a adjustable wrench.



5. Remove the aerator from the spout, turn on the shut off valves. Check for leaks on supply line connections.

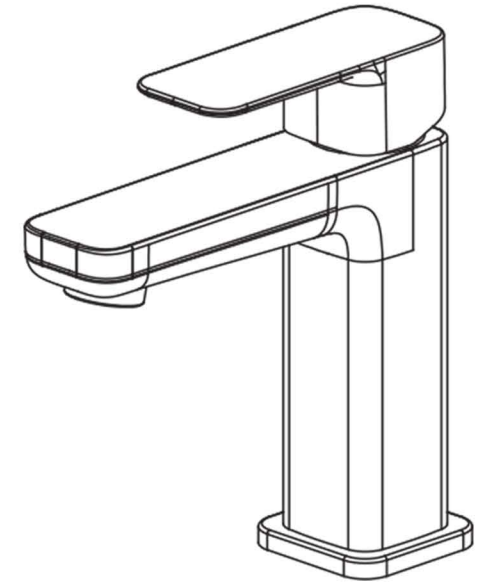


6. Flush out the water lines of any possible debris. Close the pop up assembly and fill the sink with water to check the drain for leaks.



7. Replace aerator.

Single Handle Lav Faucet



KCLT0043