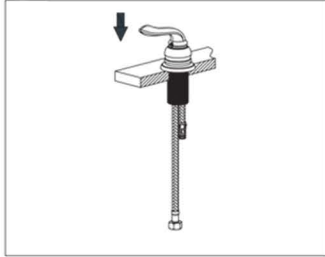
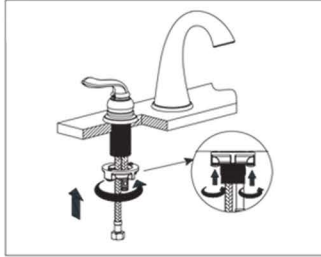




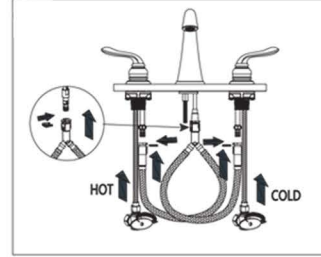
1. Install the rubber washer, metal washer and metal nut onto shank under countertop and hand tighten. Ensure the spout is in the proper position and tighten down firmly.



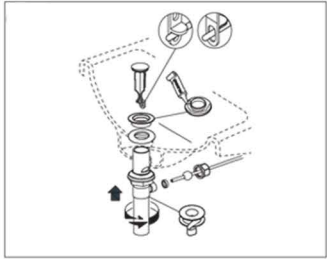
2. install the hot handle into the left side hole and the cold into the right side hole.



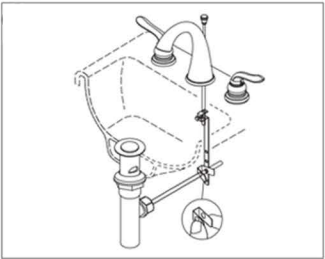
3. Install metal washer onto shank under countertop and hand tighten. Ensure the handles are in the proper position and tighten down firmly.



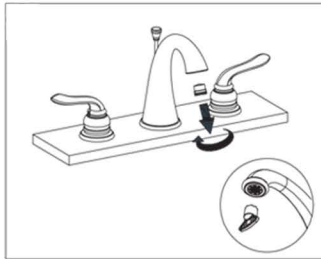
4. Connect the hot and cold supply lines to the shut off valves. Insert the trident fitting onto the spout shank adapter. Connect the hot and cold trident lines to the adapters on the bottom of the handles. Turn on shut off valves and check for leaks on the water supply lines.



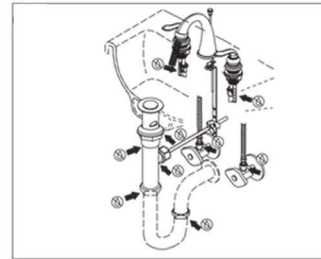
5. Install the push pop-up drain assembly: turn the top flange counter clockwise to separate it from the drain body. Apply a thin bead of putty/silicone onto the flange, screw the nut on the drain body as far down as possible leaving the metal nut and rubber washer with it, insert the drain body into the underside of the sink. Place the flange threads to the drain body threads coming up through the sink drain hole turning clockwise until it is securely tightened. Next tighten the drain body nut on the underside of the sink counter clockwise up to the sink base until it is securely tightened.



6. Place pop up into the sink drain hole with the open tab facing the back, slide the pop up rod into the faucet, install the horizontal rod, and pivot ball into the drain body from the underside of the sink, ensuring it goes through the tab of the pop up drain tab and hand tighten the nut, slide the clevis strap up the pop up rod from the underside of the sink and hand tighten the nut onto it, put the C clip onto the horizontal rod halfway. Push the pop up drain down to plug off the sink. Now you will need to adjust the height of the pop up rod to match the pop up drain closing; with the drain closed, use either the 2nd or 3rd hole from the bottom of the clevis strap and place it onto the horizontal rod and put the other half of the c clip on, adjust the height of the pop up rod to push down to open the drain and pull up to close it you may need to loosen the clevis strap nut to do this.

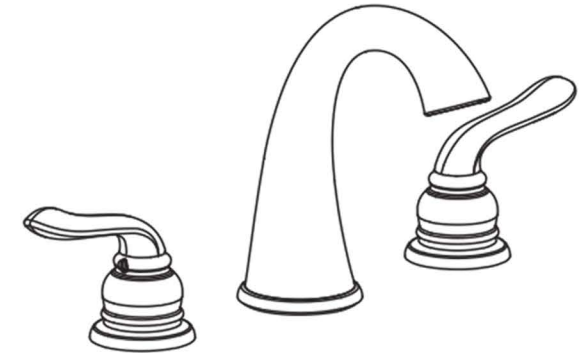


7. Remove the aerator from the spout and turn on hot and cold water to flush any air and debris in the water lines. Reattach the aerator.



8. Close the pop up assembly and fill the sink to the overflow hole (if applicable) with water for at least 5 minutes to check the drain for leaks.

## Widespread Faucet



KCLT0047