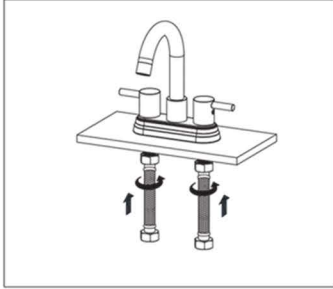
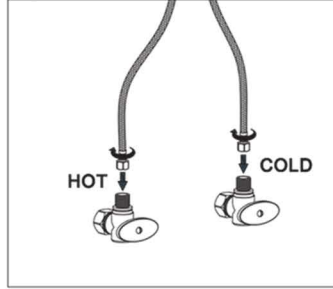


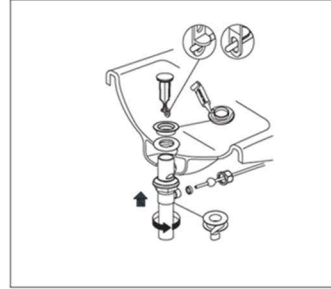
1. Install faucet into counter top, and tighten shank nuts down on the underside of the counter top with a basin wrench, ensuring the faucet is in the proper position.



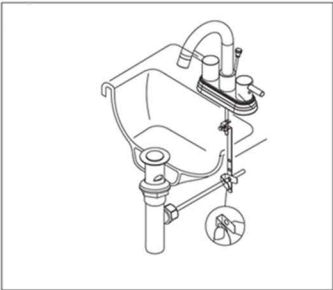
2. From the underside of counter top, install the hot and cold flexible supply lines to the faucet shanks tightening them securely.



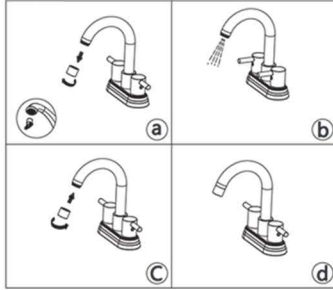
3. From the underside of the sink, Connect the open ends of the hot and cold supply lines to the shut off valves. Ensure the faucet is in the off position and turn on the shut off valves. Check for leaks on the supply line connections.



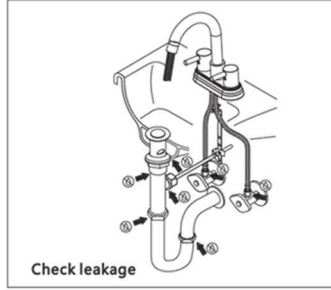
4. Install the push pop-up drain assembly: turn the top flange counter clockwise to separate it from the drain body. Apply a thin bead of putty/silicone onto the flange, screw the nut on the drain body as far down as possible leaving the metal nut and rubber washer with it, insert the drain body into the underside of the sink. Place the flange threads to the drain body threads coming up through the sink drain hole turning clockwise until it is securely tightened. Next tighten the drain body nut on the underside of the sink counter clockwise up to the sink base until it is securely tightened.



5. Place pop up into the sink drain hole with the open tab facing the back, slide the pop up rod into the faucet, install the horizontal rod, and pivot ball into the drain body from the underside of the sink, ensuring it goes through the tab of the pop up drain tab and hand tighten the nut, slide the clevis strap up the pop up rod from the underside of the sink and hand tighten the nut onto it, put the C clip onto the horizontal rod halfway. Push the pop up drain down to plug off the sink. Now you will need to adjust the height of the pop up rod to match the pop up drain closing; with the drain closed, use either the 2nd or 3rd hole from the bottom of the clevis strap and place it onto the horizontal rod and put the other half of the c clip on, adjust the height of the pop up rod to push down to open the drain and pull up to close it you may need to loosen the clevis strap nut to do this.

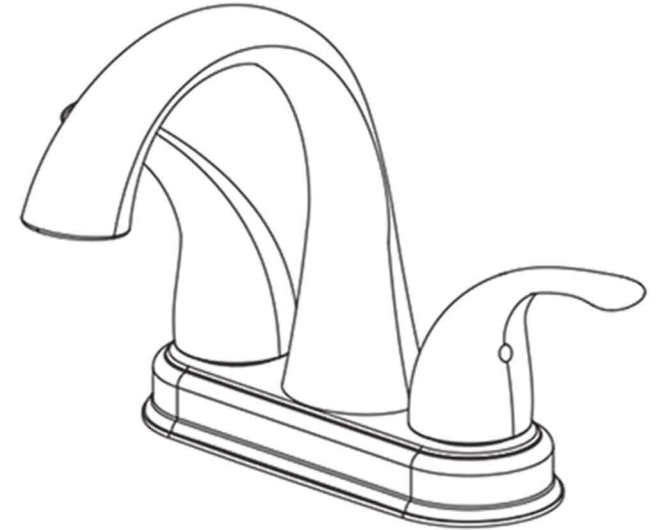


6. Remove the aerator from the spout and turn on hot and cold water to flush any air and debris in the water lines. Reattach the aerator.



7. Close the pop up assembly and fill the sink to the overflow hole (if applicable) with water for at least 5 minutes to check the drain for leaks.

## Two Handle Lavatory Faucet



KCLT0048