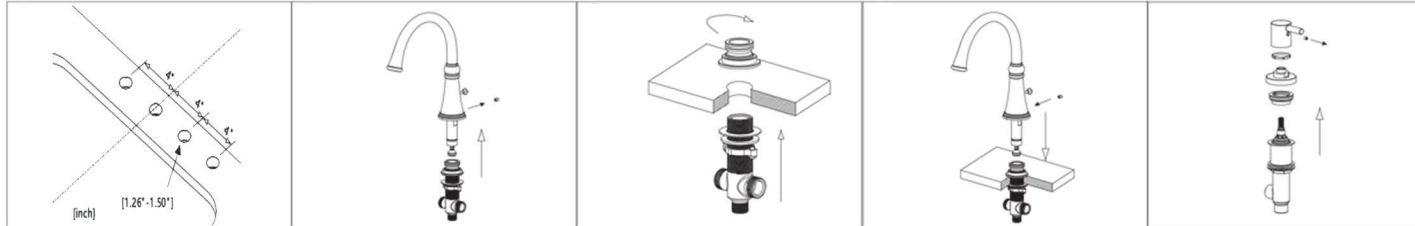


Roman Tub Faucet



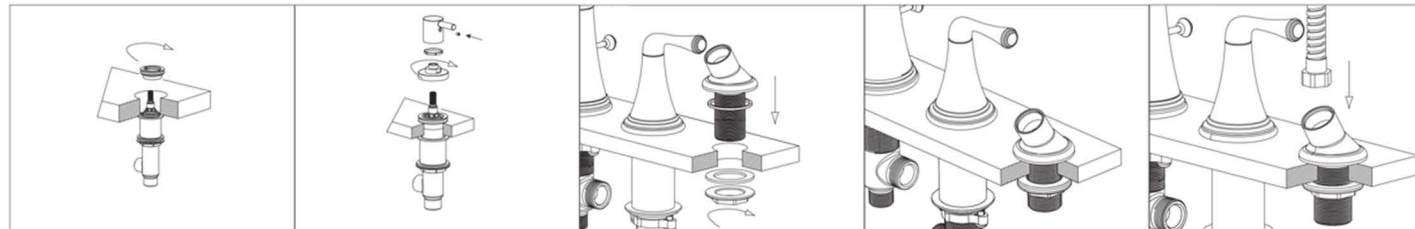
1. Prior to installation ensure the hole size and distance is correct for proper installation of the faucet.

2. Confuse the hexagonal screw of the faucet body, remove the base and hardware.

3. Pass the valve body from the bottom to the top, and rotate the lock to the base

4. Insert the faucet body to the valve body and lock with a hexagonal nut.

5. Confuse the hexagonal screw of the handle, remove the base and hardware.



6. Pass the cartridge from the bottom to top, and lock it with a cover.

7. Insert the handle and base handle to the cartridge and lock with a hexagonal nut.

8. Install the rubber washer, metal washer, and quick nut onto the shower base in that order underneath the countertop.

9. Lock shower base.

10. Pass the shower hose from the shower base.



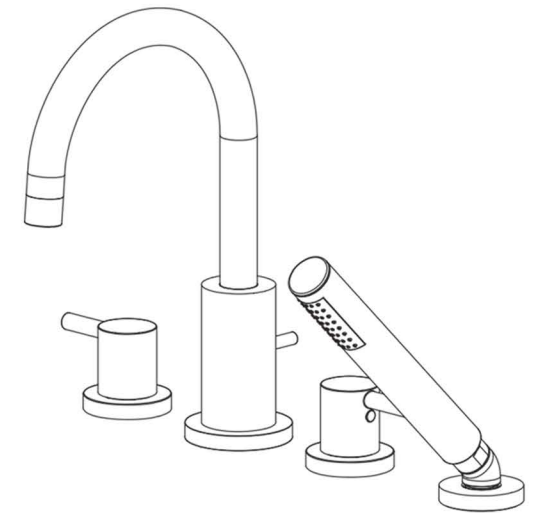
11. Twist the hand shower on the shower hose.

11. Use a hose to connect the handle valve body and the faucet valve body, connect from the hose under the faucet body to the handheld shower hose.

13. Remove the aerator from the spout, turn on the shut off valves. Check for leaks on supply line connections.

14. Flush out the water lines of any possible debris. Close the pop up assembly and fill the sink with water to check the drain for leaks.

15. Replace aerator.



KCLT0050