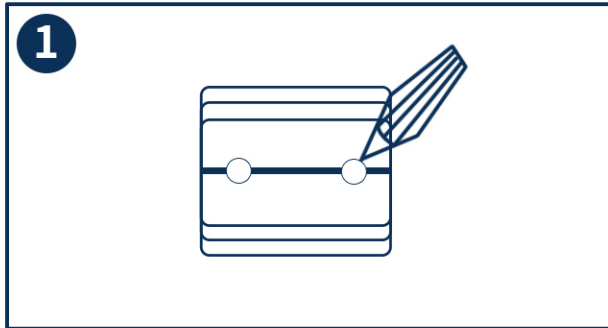
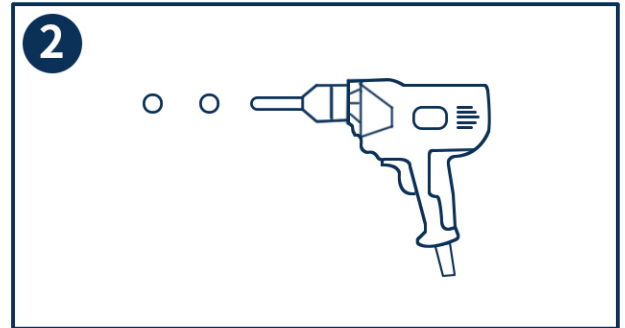


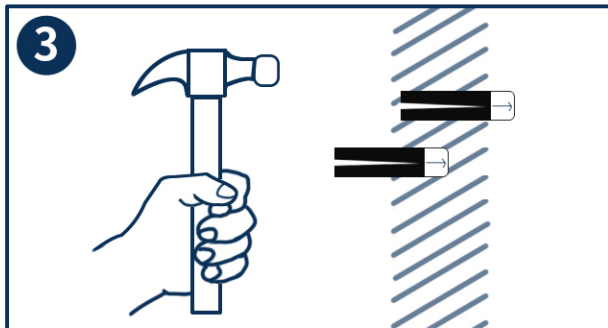
INSTALLATION AND MAINTENANCE



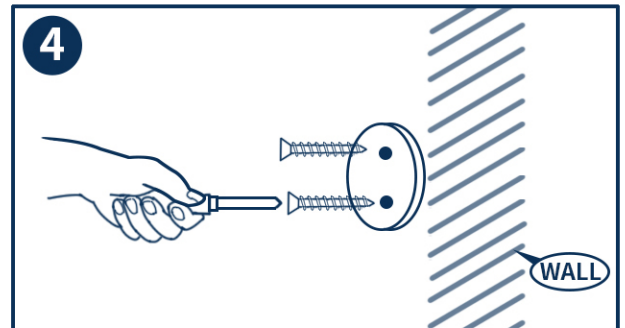
1. FIRST MARK THE POSITION OF THE HOLE IN THE WALL



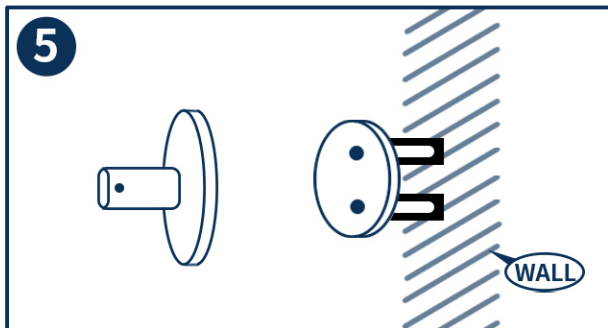
2. USE THE M6 BIT TO PUNCH HOLES IN THE MARKED POSITION



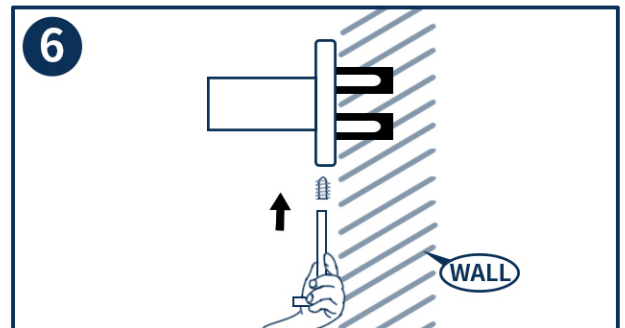
3. USE THE HAMMER TO PUSH THE PLASTC EXPANSION PIPE INTO THE HOLE



4. TIGHTEN THE STAINLESS STEEL SCREWS WITH A SCREWDRIVER AND FIX THE GASKET



5. PLACE THE PRODUCT BASE IN THE GASKET POSITION



6. SCREW THE BASE POSITION WITH WRENCH OF THE DISTRIBUTION