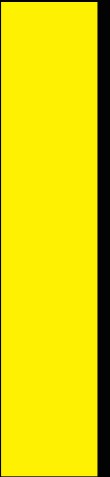


PRORECK

Manual

PR-210BP & PR-208AP

www.audioproreck.com



WARNING!

- Do not open the cover. There are no user-serviceable parts inside. Only qualified service personnel should perform servicing.
- Do not place the product near a heat source, such as a radiator, or in direct sunlight. Avoid areas with excessive dust, mechanical vibration, or shock.
- Keep the product away from dripping or splashing water. Do not place objects filled with liquids, such as vases, on the product.
- Do not place naked flame sources, like lit candles, on the product.
- Ensure adequate air circulation to prevent internal heat build-up. Do not cover the vents (if present) with items like newspapers, tablecloths, or curtains.
- The mains plug disconnects the appliance from the power supply. Make sure the mains outlet is easy to access and unplug the appliance if you notice any problems.

IMPORTANT RIGGING INFORMATION!

- Installation should only be done by qualified personnel. Improper installation can cause serious injury and property damage.
- Overhead rigging requires extensive experience. Always follow working load limits and use certified installation materials.
- Regularly inspect the installation for safety.
- Ensure the area below the installation is clear of people during rigging, de-rigging, and servicing.
- Install the device out of reach and away from areas where people may walk by or sit.

SAFETY PRECAUTIONS

- Only qualified personnel should transport, install, and operate this equipment. Always follow the instructions in this manual.
- Do not spill water or any other liquids on or into your unit.
- Plug the unit into a receptacle that matches the unit's operating voltage.
- Do not use the unit if the power cord is damaged or broken. Do not remove or break the power cord's earth ground prong. This prong helps reduce the risk of electric shock or fire in case of an internal short.

Introduction

Thank you for purchasing PRORECK products. Each item has been thoroughly tested and shipped in perfect operating condition. Carefully check that the packaging is not damaged during transport. Inspect your equipment and ensure that all necessary accessories for operation are complete.

Characteristics

PR-210BP

- High power 3-way system.
- Active, equipped with a 1200W RMS amplifier.
- Integrates FIR filters for better performance and HI-FI sound.
- 2X10" components and a 3" driver.
- Configuration presets for better performance in any need.
- Pole mount to place on subwoofer or tripods.

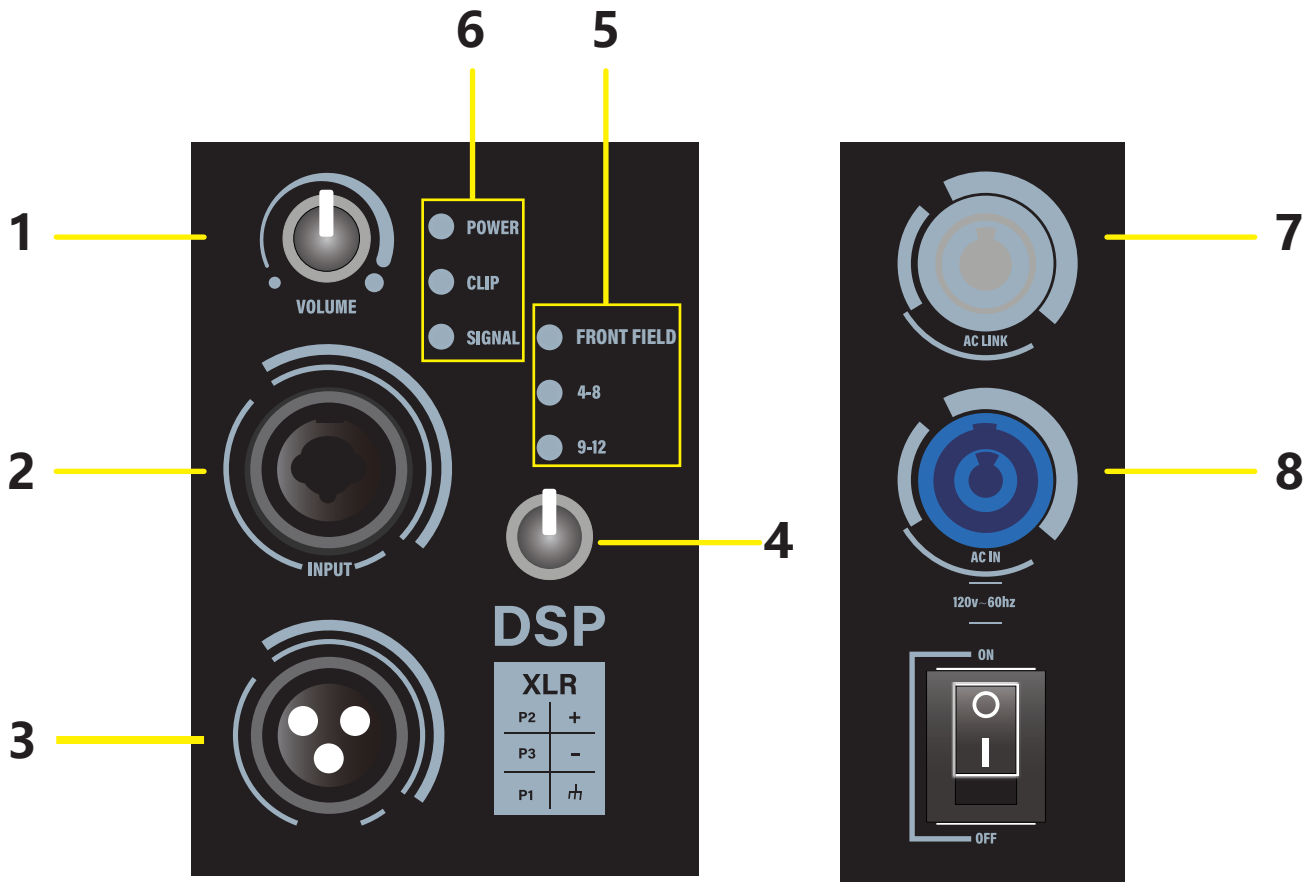
PR-208AP

- High power 3-way system.
- Active, equipped with a 1000W RMS amplifier.
- Integrates FIR filters for better performance and HI-FI sound.
- 2X8" components and a 3" driver.
- Configuration presets for better performance in any need.
- Pole mount to place on subwoofer or tripods.

The **PR-210BP &PR-208AP** is the solution for those people who are dedicated to social or corporate events where they require a high sound pressure with low distortion in a compact and aesthetic equipment.

Amplification and process

The power stage of the entire PRORECK series uses class D amplifiers. This ensures optimal energy efficiency, delivering excellent sound quality while keeping the unit lightweight.

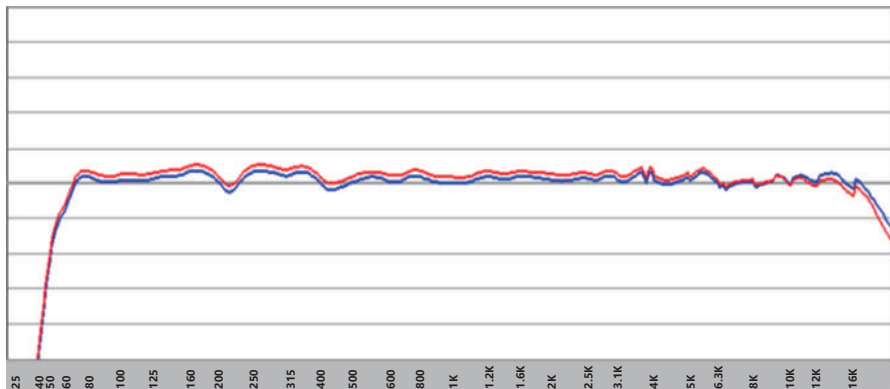
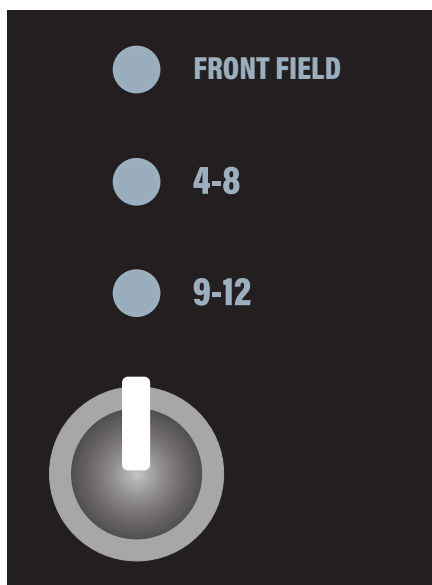


BACK PANEL

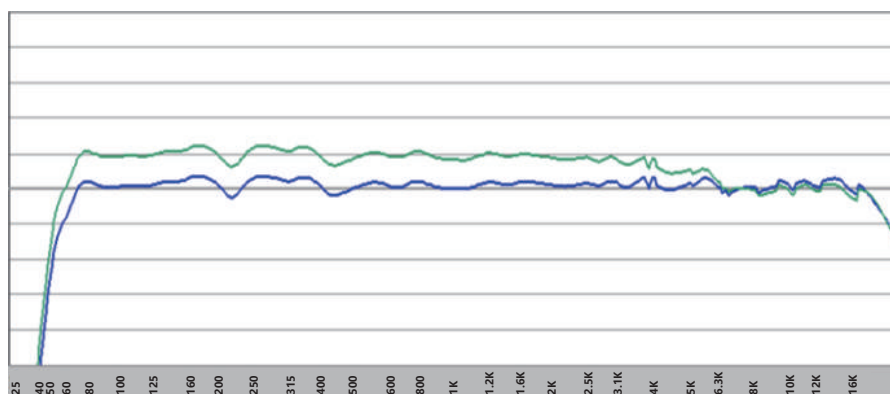
1. Volume control controls the input signal.
2. Input connector on female combo jack.
3. Output connector on male XLR connector.
4. Preset selector selects the desired preset.
5. Preset indicator LEDs :
Led "Front field" indicates that the "front field" preset is selected.
Led "4-8" indicates that the preset 4 to 8 boxes is selected.
Led "9 -12" indicates that the preset 9 to 12 boxes is selected.
6. Power and protection indicator leds.
Power indicates equipment power on.
Clip indicates that the limiters are acting and the capacity of the unit is being exceeded.
Signal indicates the presence of signal at the unit input.
7. AC LINK: Powercon for output connection to another box.
8. AC IN: Powercon for connection to AC 120V power source.

Presets

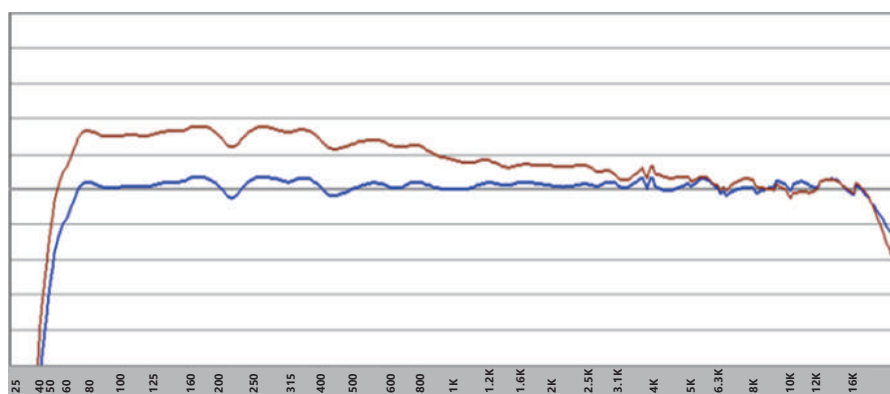
In linear systems we have a low frequency summation effect as we add more cabinets to the array, this causes the frequency response to change, having more mid and low frequencies as we get larger arrays.



Example 4 boxes



Example 8 boxes



Example 12 boxes

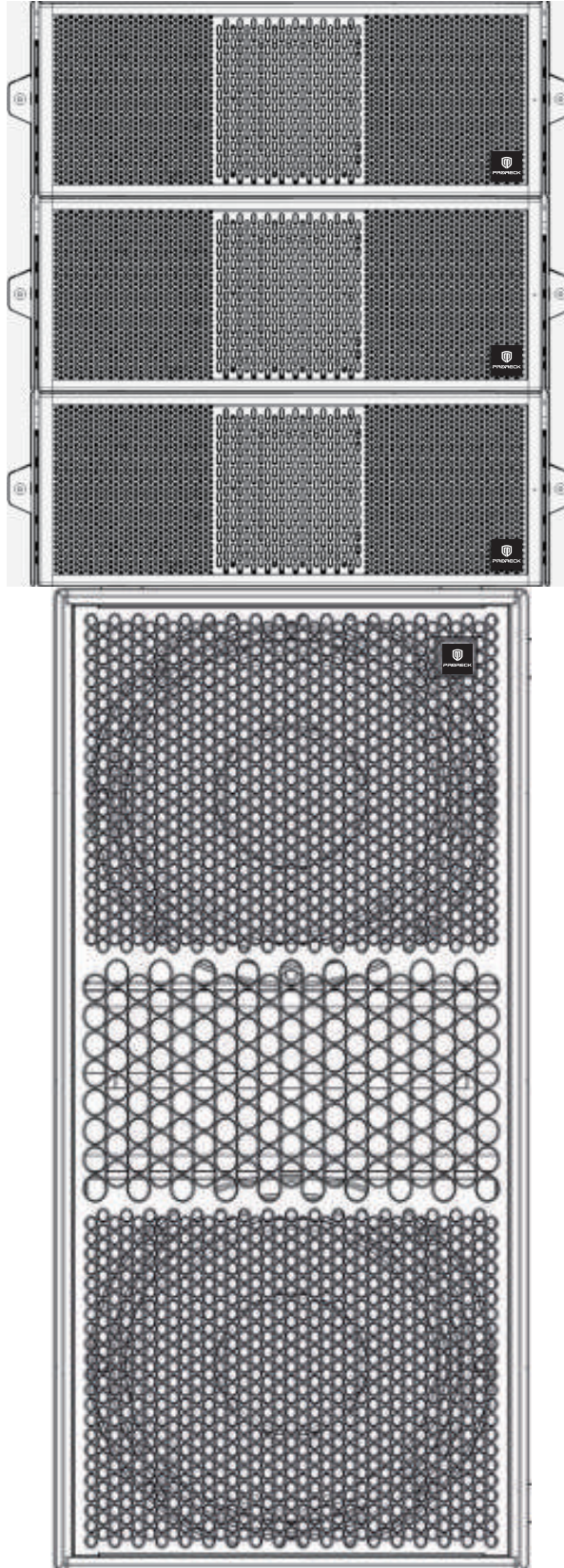
Preset 1 (FRONT FIELD) use in arrangement of up to 3 boxes.

Preset 2 (4-8) use in arrangement of up to 8 boxes.

Preset 3 (9-12) use in arrangement of up to 12 boxes.

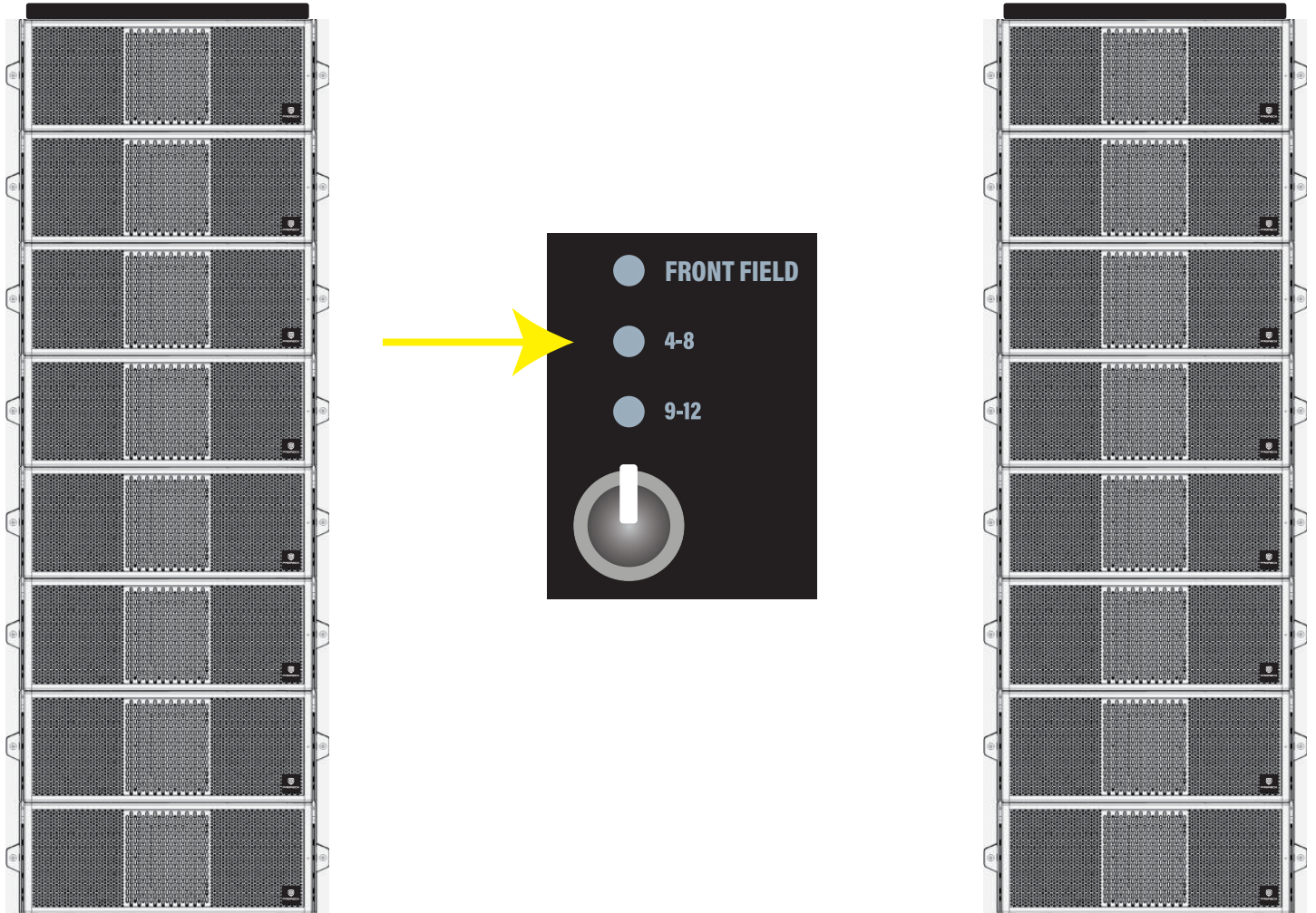
Preset 1: front field

The first preset is designed for use with up to 3 boxes. It works perfectly for stacking on the floor or on a subwoofer. This preset is the flattest and is ideal for using one box per side.



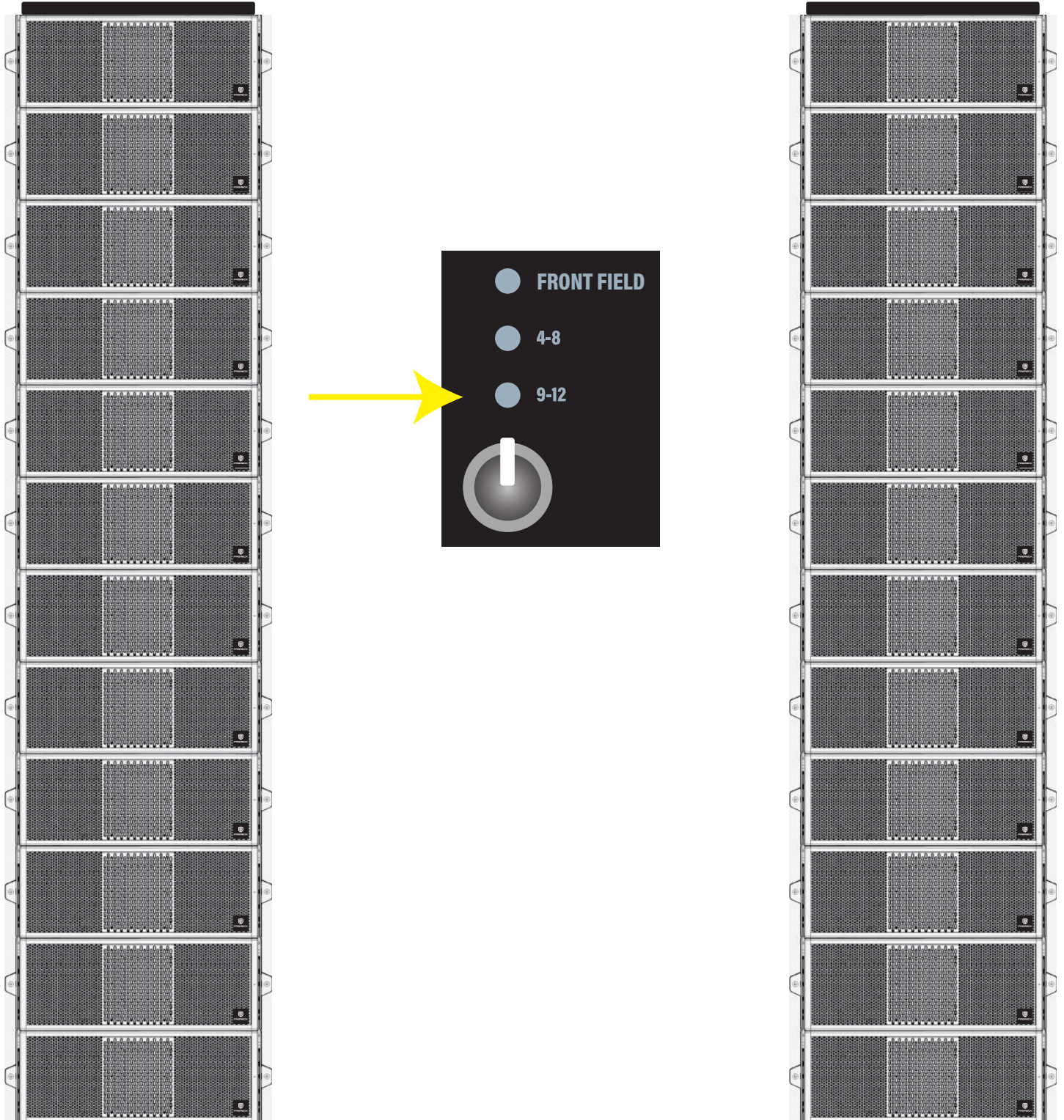
Preset 2: 4 to 8 boxes

The second preset is designed for use with up to 8 boxes, either flown or on a subwoofer. This preset compensates for low-mid summation, ensuring the system maintains a flat frequency response suitable for any musical genre.



Preset 3: 9 to 12 boxes

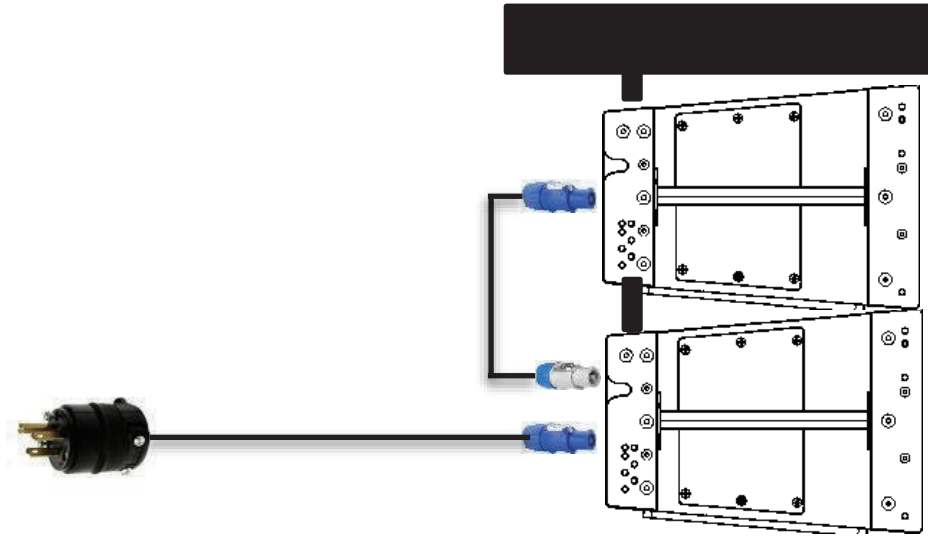
The third preset is designed for use with up to 12 hung boxes, which is the maximum number of boxes the system supports. This preset further attenuates the low-mid frequencies to ensure better distribution and frequency response throughout the entire volume.



Connections

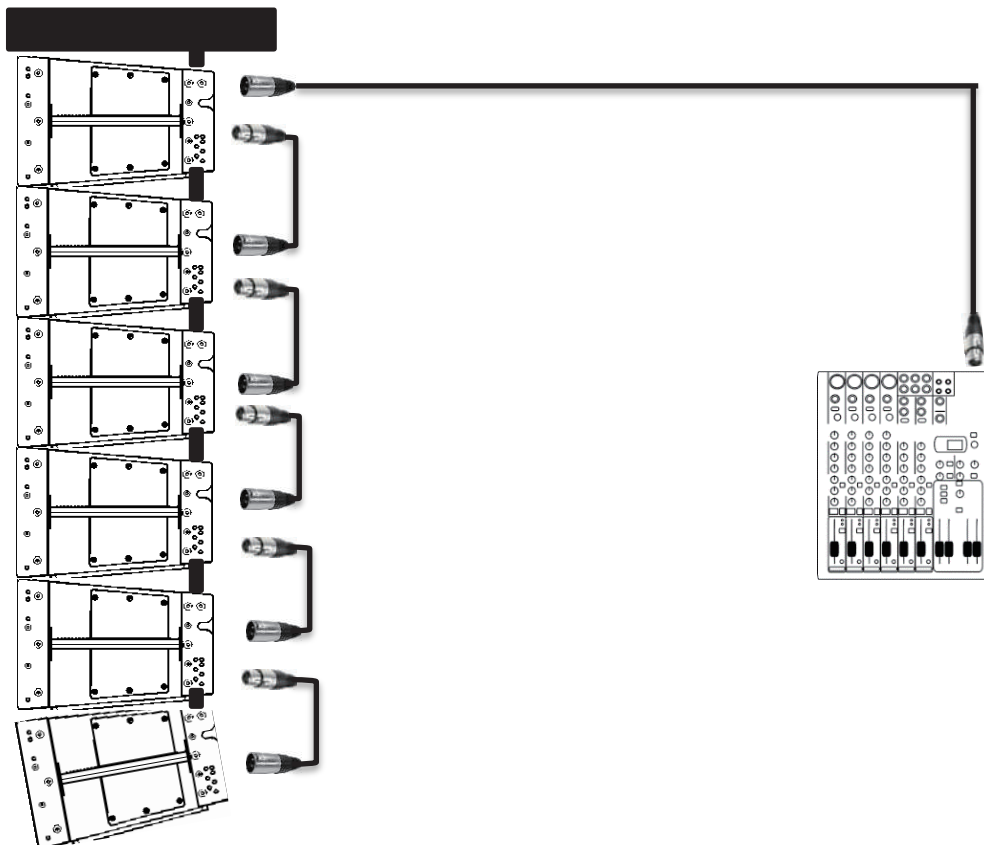
Current link :

PROECK provides a power center solution capable of distributing the necessary power for optimal performance of linear systems. Visit your nearest distributor to learn more about these options.



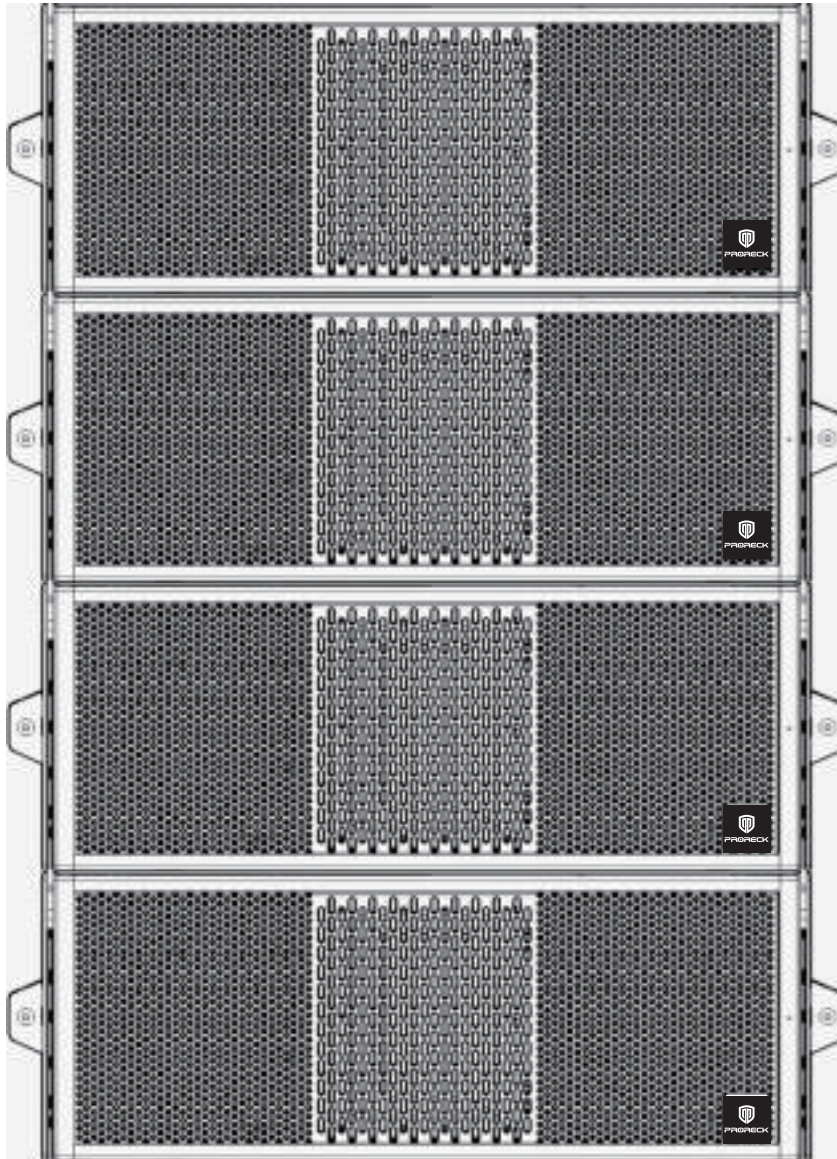
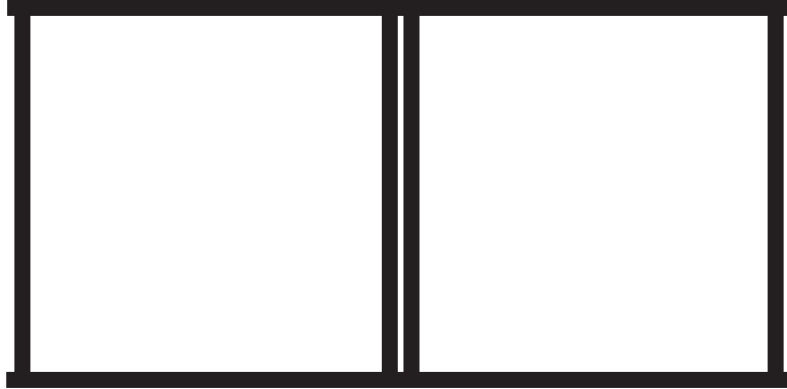
Signal link :

For signal linking, PROECK offers signal links in its catalog that allow you to cascade the signal between boxes. You only need a long signal cable from a source, such as a mixer or processor.



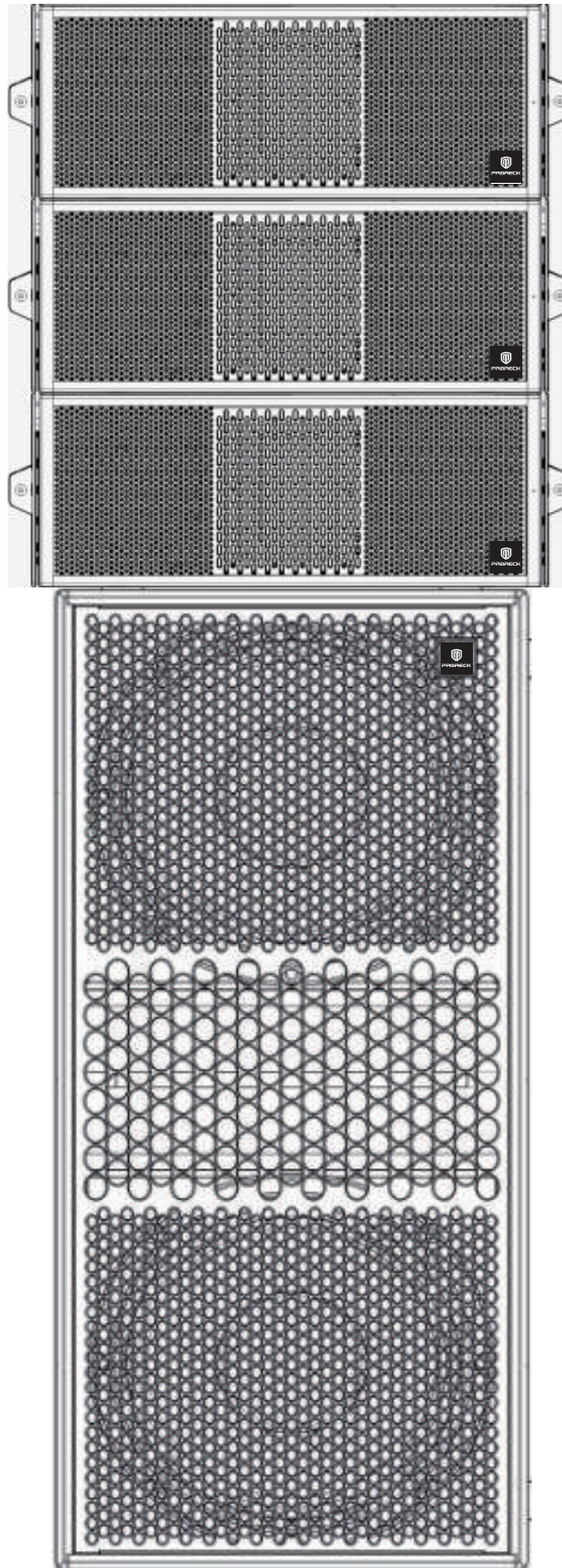
Rigging:

PRORECK provides a hanging adapter for suspending the equipment. Insert the shackles into the boomer holes along with the load sling to connect it to your lifting system.

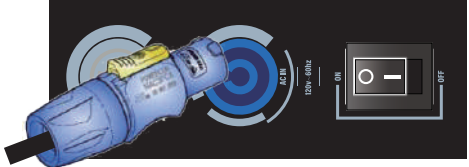
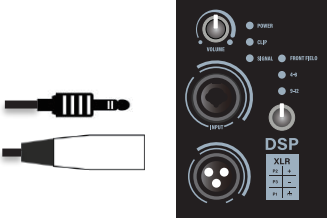





Stack:

If placing the equipment on a surface or subwoofer, the bumper can be used in this position by simply inverting the equipment.



Getting Started Guide

<p>1.- Connect the power to the loudspeaker. Ensure the socket is properly grounded to minimize the risk of potential failures due to voltage returns.</p>	
<p>2.- Insert the signal cable into the input using XLR or TRS Jack.</p>	
<p>3.- Turn the gain knob all the way down.</p>	
<p>4.- Turn on the equipment.</p>	
<p>5.- Gradually increase the gain.</p>	

PR-210BP Specifications

Frequency range (-6dB)	60Hz-18kHz
Nominal directive H	90
Nominal directive V	10°
Nominal sound pressure@ 1m	124 dB
Peak sound pressure @ 1m	136 dB
Nomponents LF/MF	2x10" Ferrite
Components HF	1x3 " Ferrite
Presets	Front Field, 4-8,9-12
Continuous power/ LF	1x550 W
Continuous power/ MF	1x500 W
Continuous power/ HF	1x150 W
Connectors	XLR
Cabinet material	Plywood
Dimensions(L x W x D)	92 cm x 39 cm x 50.5 cm
Amplification and process	PRORECK FIR.
Operating voltage	120 Volts
Output voltage	120Volts 60 Hz

PR-208AP Specifications

Frequency range (-6dB)	60Hz-18kHz
Nominal directive H	90
Nominal directive V	10°
Nominal sound pressure@ 1m	123 dB
Peak sound pressure @ 1m	135 dB
Nomponents LF/MF	2x8" Ferrite
Components HF	1x3 " Ferrite
Presets	Front Field, 4-8,9-12
Continuous power/ LF	1x450 W
Continuous power/ MF	1x400W
Continuous power/ HF	1x150 W
Connectors	XLR
Cabinet material	Plywood
Dimensions(L x W x D)	85 cm x 34 cm x 44cm
Amplification and process	PRORECK FIR.
Operating voltage	120 Volts
Output voltage	120Volts 60 Hz



PRORECK

Contact Us

Visit our website : www.audioproreck.com
Feel free to contact us via sales-1@proreck.com