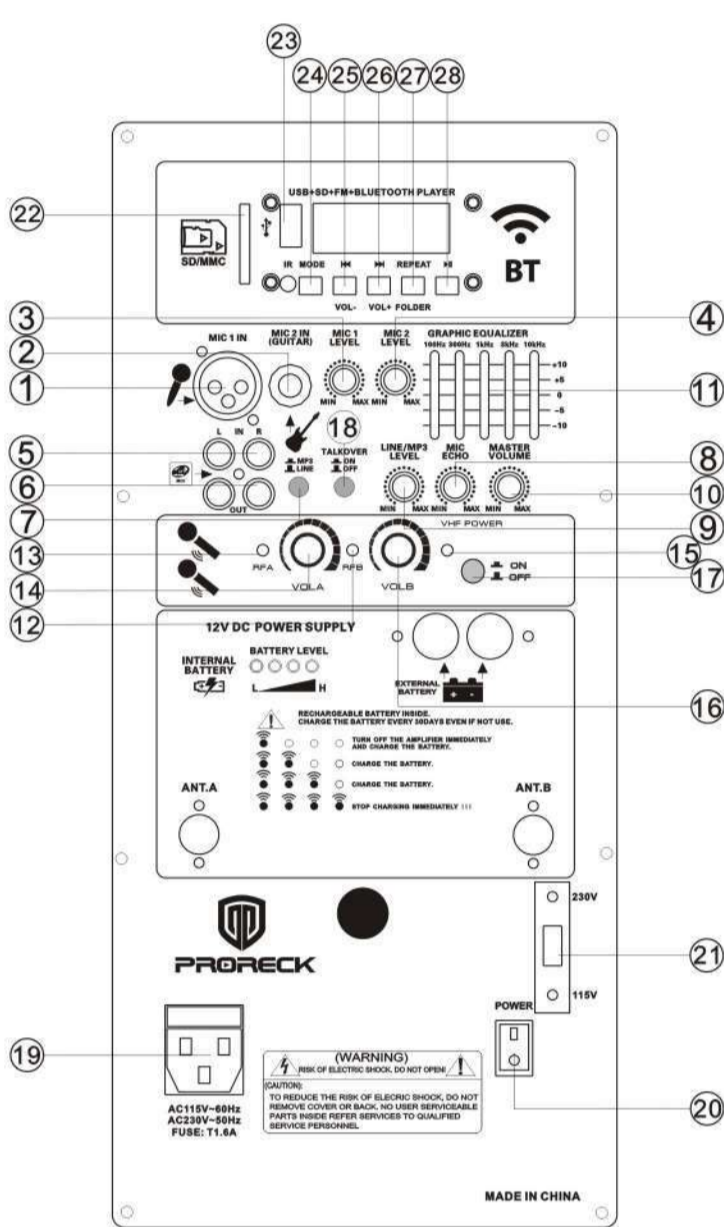
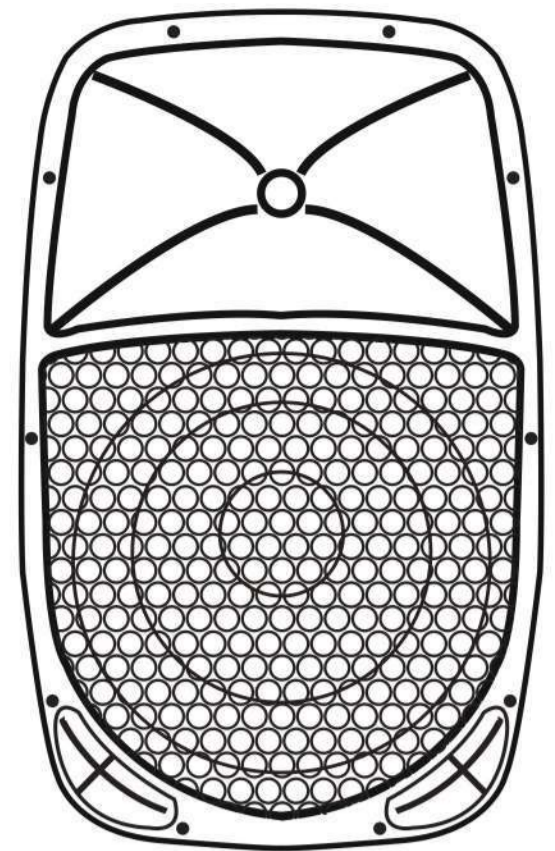


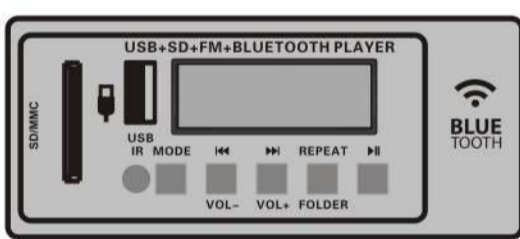


PRORECK AUDIO,INC
brand@proreck.com
www.audioproreck.com



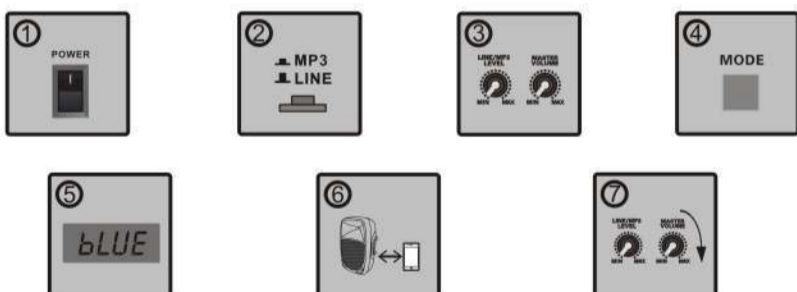
1. Mic 1.Input:XLR connector for a balanced Microphone.
2. Mic 2.Input:1/4" connector for an unbalanced Microphone.
3. Mic 1.level control:To set the volume level of Mic 1-in signal.
4. Mic 2.level control:To set the volume level of Mic 2-in signal.
5. Line Input:Allow you to connect an external audio device through RCA jack.
6. Line Output: Use RCA jack to connect another amplifier in cascade.
7. MP3/Line selector switch: When the button is in, you will be able to get sound from a USB/SD card. When the button is out, you will get sound if you plug in a RCA cord.
8. Echo volume: To control the echo volume.
9. The volume control for MP3 or LINE IN.
10. Master control: To set the general volume level.
11. Equalizer: Designed for 12db cut or boost.
12. Wireless Microphone B indicator.
13. Wireless microphone A indicator.
14. Level control: To set the volume level of wireless microphone A.
15. Wireless microphone power indicator.
16. Level control: To set the volume level of wireless microphone B.
17. ON/OFF button of the VHF receiver.
18. ON/OFF button for TALKOVER function.
19. AC power: To connect the AC power cord.
20. On/Off Power switch.
21. 115V-230V selector.
22. SD port: To insert a SD card with MP3 files.
23. USB port: To insert a USB memory storage device with MP3 files.
24. Input mode: To select an input mode:BLUE/ FM/ LINE IN/MP3 player.
25. Press once to skip to the previous song or FM channel. Press and hold to turn down the volume level.
26. Press once to skip to the next song or FM channel. Press and hold to turn up the volume level.
27. It is the repeat button. We provide 4 modes: Repeat all/ Repeat one/Random/ Folder Repeat all.
28. Press once to play or pause a song(MP3 mode). Press and hold to enter folder mode,the screen will show "FOLD", then press left or right to choose your favorable music folder. Press once to search radio stations and they can be saved automatically(FM mode).

APPLICATION USAGES SD and USB Instructions



1. Turn on the power.
 2. Push the MP3/LINE button in to choose MP3 mode.
 3. Turn the MP3/LINE LEVEL and MASTER VOLUME to the MIN level.
 4. Insert a SD card or USB memory storage device.
 5. Turn the MP3/LINE LEVEL and MASTER VOLUME to a suitable level respectively.
- Note:MP3,cellphone,ipad and PC can't be read by USB. You may connect them by BLUETOOTH or LINE IN function.

Bluetooth Usage



1. Turn on the power.
2. Push the MP3/LINE button in to choose MP3 mode.
3. Turn the MP3/LINE LEVEL and MASTER VOLUME to the MIN level.
4. Keep pressing the MODE button to find "BLUE".
5. When in the BLUE mode,the display will show "BLUE".
6. Connect a device with bluetooth function.
7. Turn the MP3/LINE LEVEL and MASTER VOLUME to a suitable level.

When in the BLUE mode,you can connect your bluetooth device such as ipad,iphone or PC to the amplifier. Note:Remember to turn up the volume of the connected device to a suitable level for a good sound effect.

MIC Directions



1. Turn on the power.
2. Turn the MIC LEVEL and MASTER VOLUME to the MIN level.
3. Use 1/4"input jack MIC to insert.
4. Turn the MIC LEVEL and MASTER VOLUME to a suitable level respectively.

You can use two microphones at the same time through XLR connector and 1/4"input jack.MIC1 LEVEL and MIC2 LEVEL are used to adjust the volume of two microphones respectively.

Line In Mode



1. Turn on the power.
2. Push the MP3/LINE button out to choose LINE mode.
3. Turn the MP3/LINE LEVEL and MASTER VOLUME to the MIN level.
4. Connect a music source device to the RCA inputs marked LINE IN.
5. Turn the MP3/LINE LEVEL and MASTER VOLUME to a suitable level respectively.

You can use the LINE IN function when you wish to link up with an additional stereo signal source without the use of a mixer console. Like CD players,DVD music plays,MP3 players etc. Note:Remember to turn up the volume of the connected device to a suitable level for a good sound effect.