



 **FOREMOST**
SINCE 1988

COLOR CARD

FM-KFF025-1/2/3/4/5/6/7

FUNCTIONAL SWEATBAND CATALOGUE

功能性汗带色卡

FM-KFF025-1

100% POLYESTER



吸水速干
Absorbent and
Quick drying
吸湿速乾



抗菌除臭
Antibacterial
and deodorant
抗菌除臭

KF01-anti-bacterial water-absorbing quick-drying bird eye cloth is the most used sweatband product in our company. The fiber cross section of the fabric is a unique "+" shape to increase capillary effect, which makes the fabric dry and Moisture - conducting due to wicking on or between capillary channels. Special post-processing makes the fabric have antibacterial and deodorizing functions, making it refreshing, sanitary and odorless, resistant to cleaning, and suitable for making various close-fitting sports products.

KF01-抗菌吸水速乾メッシュを用いて作製したスベリは弊社が現在使用している最も多くのスベリ製品であり、生地繊維の断面は独特の "+" 字形を呈して毛細管作用を増加させ、生地は繊維上或いは繊維間の毛細管通路により、芯吸引作用を発生させ、乾燥すっきり導湿性能を有する。特殊な後処理により、生地に抗菌脱臭の機能性を持たせ、さわやかで異臭がなく、洗浄に耐え、様々な密着製品に適している。



FM-KFF025-2

100% POLYESTER



接触涼感
Cold feeling
接触涼感



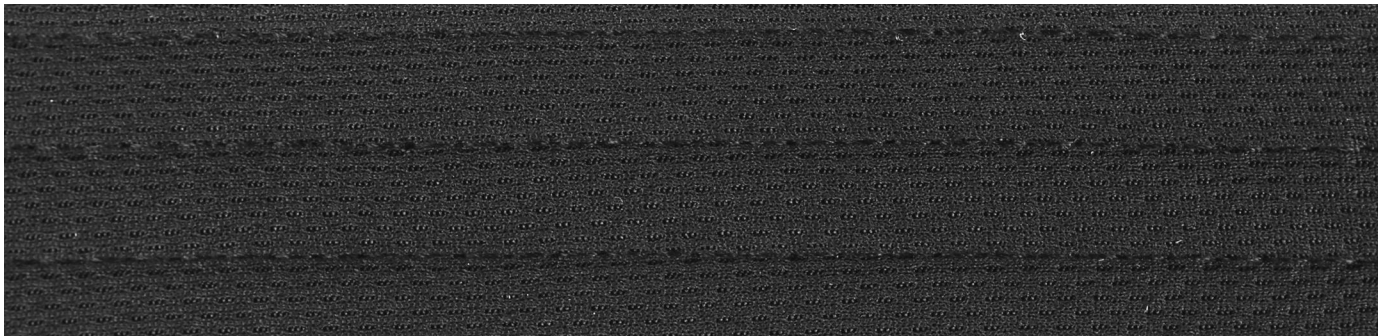
吸水速干
Absorbent and
Quick drying
吸湿速乾



抗菌除臭
Antibacterial
and deodorant
抗菌除臭

The sweatband made of FM2022-KF010-Fulis bird eye cloth has many functions: water absorption and quick drying, contact cool feeling, antibacterial and deodorant. The fabric fiber uses fiber modification technology to add nano-jade powder and silver ions into ceramic master batch to spin into yarn, which makes the final fabric original yarn have the above functions and can be washed for many times.

FM 2022-KF010-フリスメッシュを用いて作られたスベリは、多種の機能性を有する：吸水速乾、接触涼感、抗菌防臭。生地繊維は繊維改質技術を用いてナノ級玉粉末と銀イオンをセラミック母粒に添加して紡糸して糸を形成し、最終生地原糸は以上の多種の機能を持ち複数回の水洗に耐える。



FM-KFF025-3

55%NYLON 45%POLYESTER



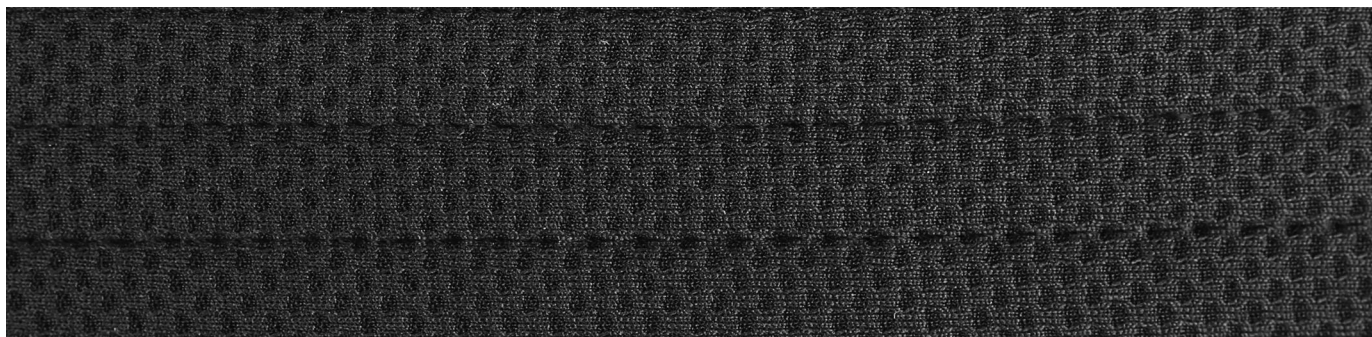
接触凉感
Cold feeling
接触凉感



吸水速干
Absorbent and
Quick drying
吸湿速乾

FM-KF023-gasification cold honeycomb net adopts unique technology and is made of two different yarns, which can effectively generate vaporization heat and make the fabric have gasification cold effect. No matter cold water, hot water or sweat, they can feel cold. As long as they are in a water-containing state (squeeze out the water), they can experience the cool feeling many times after swinging. 50% Functional fiber, so that the fabric has permanent contact with cold feeling and water absorption and quick drying functions, especially suitable for making detachable sweatband.

FM-KF023-気化冷感ハニカムメッシュは独特な技術を採用し、2種類の異なる材質の糸を用いて作製し、有効に気化熱を発生させ、織物に気化冷感効果を持たせることができる。冷たい水もお湯も汗も冷たい感じがする。水を含んだ状態（水分を絞って乾かす）であれば、振った後、何度も涼しさを体験することができる。50%の機能性繊維は、生地が永久接触冷感および吸水速乾機能を有し、特に取り外し可能な汗ベルトを作るのに適している。



FM-KFF025-4

60%POLYESTER 45%POLYPROPYLENE

FM-KFF025-5

68%POLYESTER 32%POLYPROPYLENE



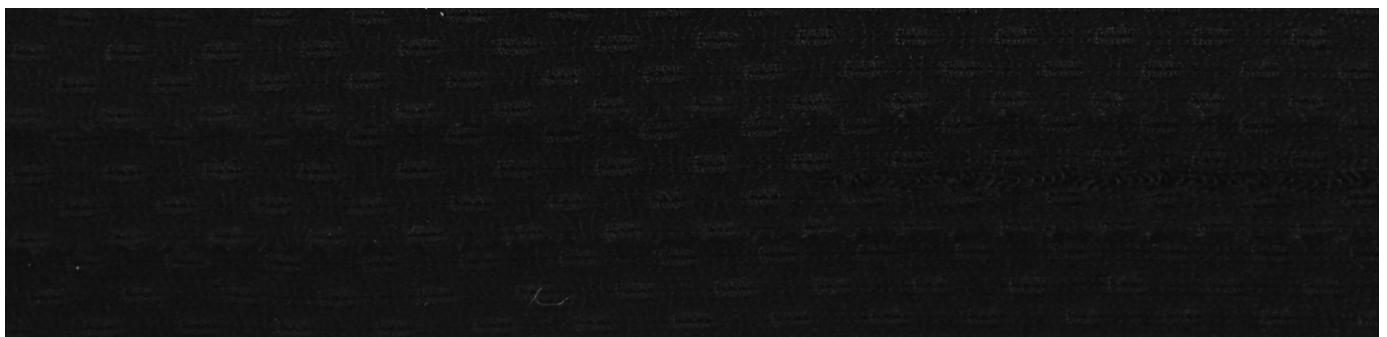
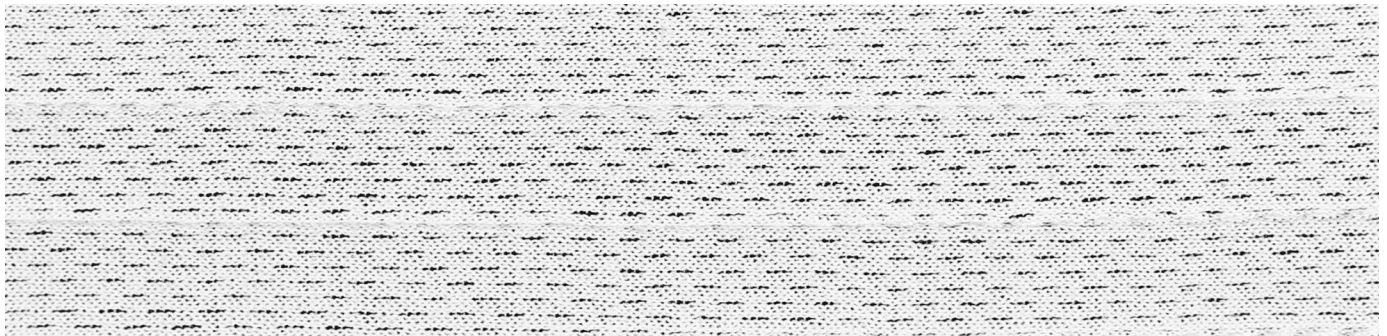
单向导湿
Single moisture
Conduction
一方向導湿



瞬吸干爽
Instant absorption
Quick dry
速吸速乾

Polyester-acrylic interwoven knitted fabric makes the fabric have the function of single moisture conduction, which can quickly transfer the moisture and heat generated by people from the inner layer of the fabric to the outer layer of the fabric (polyester surface) through the wicking effect of the close-fitting polypropylene surface and the high specific heat capacity of polypropylene fiber. Combined with the water repellent characteristics of polypropylene fiber, the side attached to the skin keeps a continuous dry state all the time.

ポリエステル交絡のニット生地を採用し、独特の構造により生地に一方向導湿機能を持たせ、人が発生した湿、熱を密着したポリプロピレンの芯吸引作用とプロピロンの高比熱容量を迅速に生地内層から生地外層（ポリエステル面）に伝達することができ、プロピロン自体の撥水特性を結合し、皮膚に貼り付けた面を常に乾燥状態に保つことができる。



FM-KFF025-6

75%POLYESTER 25%POLYPROPYLENE



单向导湿
Single moisture
Conduction
一方向導湿



单向导湿
Single moisture
Conduction
一方向導湿



瞬吸干爽
Instant absorption
Quick dry
速吸速乾

Polyester-acrylic interwoven knitted fabric makes the fabric have the function of single moisture conduction, which can quickly transfer the moisture and heat generated by people from the inner layer of the fabric to the outer layer of the fabric (polyester surface) through the wicking effect of the close-fitting polypropylene surface and the high specific heat capacity of polypropylene fiber. Combined with the water-repellent characteristics of polypropylene fiber, the side attached to the skin always keeps a continuous dry state. The whole fabric adopts the quality design of terry cloth, which makes the sweat belt also have the effect of keeping warm.

ポリエステル交絡のニット生地を採用し、独特の構造により生地に一方向導湿機能を持たせ、人が発生した湿、熱を密着したポリプロピレンの芯吸引作用とプロピロンの高比熱容量を迅速に生地内層から生地外層（ポリエステル面）に伝達することができ、繊維自体の撥水特性を結合し、皮膚に貼り付けた面を常に乾燥状態に保つことができる。生地全体にタオル地の品質設計を採用しており、作ったスペリは保温効果もあります。

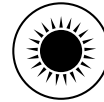


FM-KFF025-7

65%POLYESTER 35%RAYON



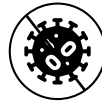
吸湿发热
Hygroscopic
Fever
吸湿と発熱



远红外发热
Far infrared
Heating
远红外发热



除臭
Deodorization
消臭



抗菌除臭
Antibacterial
and deodorant
抗菌除臭

The fabric made of FM2022-KF015-multifunctional TR sweat cloth has the function of moisture absorption and heat generation, which is very suitable for winter sweat belt, and the fabric itself is light and breathable.

FM 2022-KF015-多機能TR生地を用いた生地は吸湿発熱機能があり、冬用のスベリに適しており、生地自体も薄く通気している。

