

U128 Installation Steps



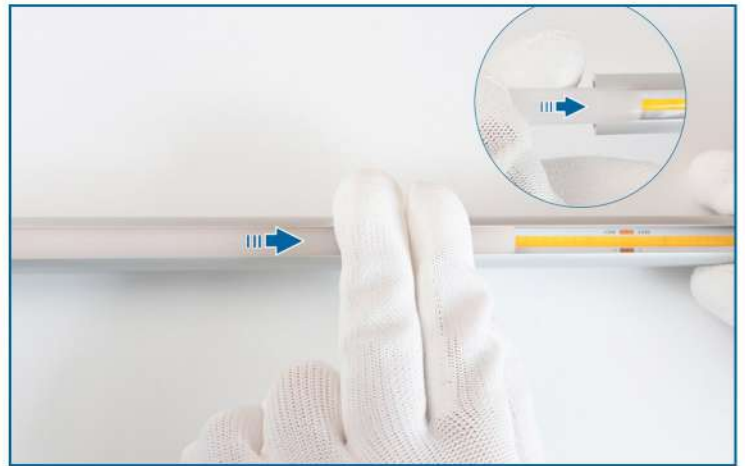
Step 1 - Fix the brackets with screws.



Step 2 - Measure the required length and cut LED channels.



Step 3 - Attach the LED strip to aluminum channel.



Step 4 - Slide the cover into the channel.



Step 5 - Put the channel on the bracket.

Redefine Your Home Lighting with Muzata

Muzata provides a one-stop lighting system for your entire home. We offer a wide range of LED channels that can be installed in a variety of places. You can also create a spotless lighting effect with Muzata LED light strip.



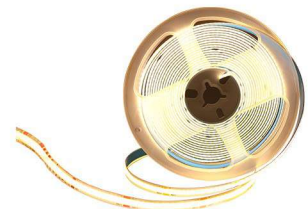
| Model | U124 | U125 | U126 | U127 | U128 |
|----------------------------|---------------------------------------|----------------------------------|---------------------------------------|---------------------------------|---------------------------------|
| Name | Wall exterior double aluminum channel | Ground recessed aluminum channel | Wall exterior corner aluminum channel | Shelf recessed aluminum channel | LED closet rod aluminum channel |
| Application | Wall lighting | Ground lighting | Exterior corner lighting | Bookcase or cabinet | Closet hanging rod |
| For LED strip width | ≤12mm | ≤12mm | ≤8mm | ≤10mm | ≤8mm |



| Model | U129 | U130 | U131 | LC32 | V101 |
|----------------------------|-------------------------------------|--|------------------------------------|--------------------|---------------------------|
| Name | LED skirting board aluminum channel | Ambient wall aluminum channel | LED crown molding aluminum channel | Stair Lighting Kit | V-Shaped aluminum channel |
| Application | Skirting lighting | Wall decoration (close to the ceiling) | Wall-ceiling junction decoration | Staircase lighting | Internal corner lighting |
| For LED strip width | ≤8mm | ≤10mm | ≤8mm | ≤8mm | ≤20mm |

Matched LED Strip Recommendations

LED strip listed below can create spotless effects with most LED channels. However, when choosing the LED strip, please pay attention to the width. You could search Muzata and model number to find them.



| Model | AC1L | AC1T | SH3L |
|--------------------|--|---|---|
| Name | RGB LED strip lights | RGB LED strip lights (waterproof) | COB LED strip lights |
| Width | 8mm | 10mm | 8mm |
| LED Density | 96LEDs/m | 96LEDs/m | 320LEDs/m |
| Features | 366 lighting modes; Spotless with LED channel | 366 lighting modes; Spotless with LED channel; Waterproof | High LED density; Spotless with LED channel; Color temperature: 3000K |