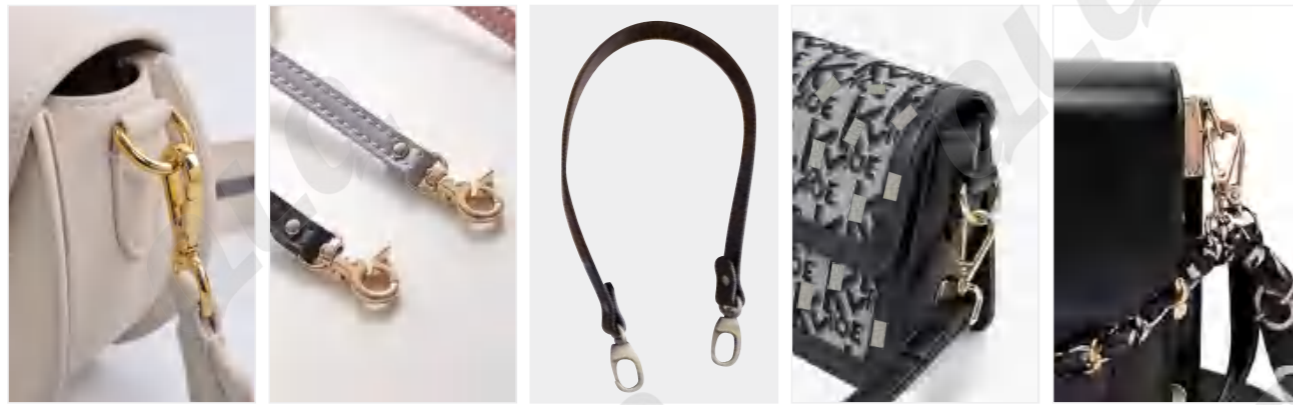
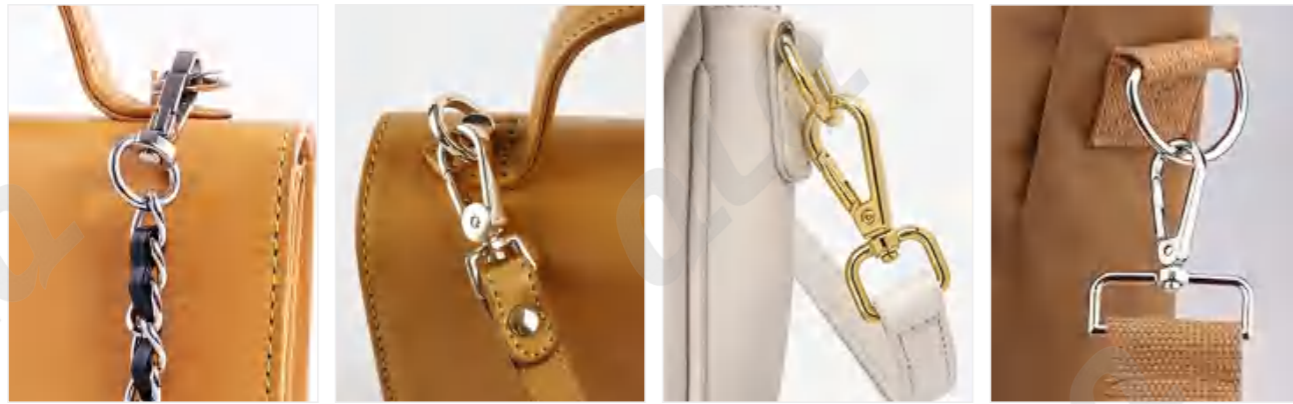
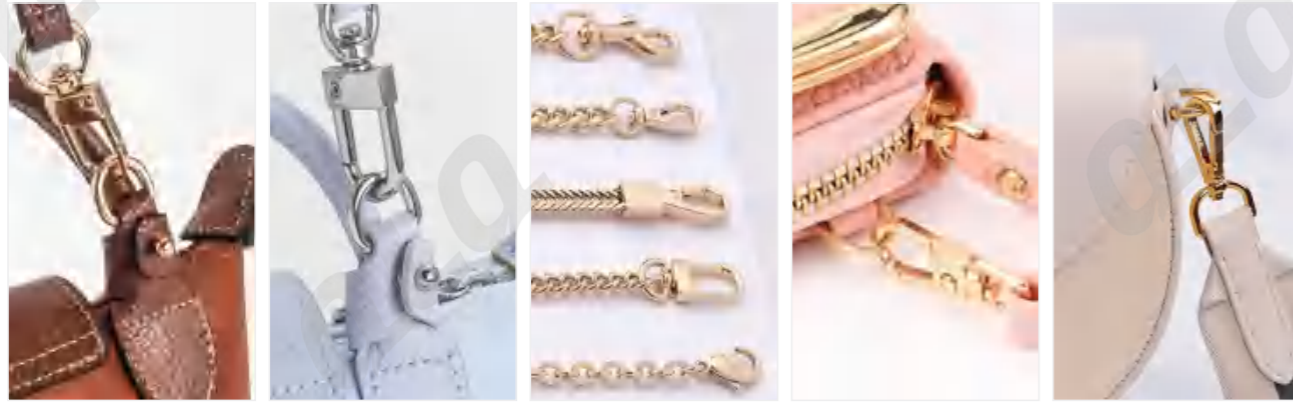


01 狗扣

DOG HOOK



货描 Description	内径宽(mm) Inner Diameter Width	高度(mm) Height
2分 狗扣 7mm Dog Hook	7	38.36
3分 狗扣 9mm Dog Hook	9	40.5
4分 狗扣 12.7mm Dog Hook	12.7	49.27
5分 狗扣 16mm Dog Hook	16	52.38
6分 狗扣 19.6mm Dog Hook	19.6	49.3
1寸 狗扣 25.4mm Dog Hook	25.4	48.43
1寸2 狗扣 32mm Dog Hook	32	49.76
1寸半 狗扣 38mm Dog Hook	38	49.85

DH-1-1 12.7mm Snap Hook (round) 板扣 4分 (圆) 49.27mm

DH-1-2 12.7mm Snap Hook (round) 板扣 4分 (圆) 51.66mm

DH-1-3 16mm Snap Hook (round) 板扣 5分 (圆) 52.38mm

DH-1-4 12.7mm Snap Hook (round) 板扣 4分 (圆) 48.66mm

DH-1-5 16mm Snap Hook (rectangle) 板扣 5分 (方) 49.4mm

DH-1-6 19.6mm Snap Hook (rectangle) 板扣 6分 (方) 49.3mm

DH-1-7 16mm Snap Hook (oval) 板扣 5分 (蛋) 46.53mm

DH-1-8 19.6mm Snap Hook (oval) 板扣 6分 (蛋) 47.92mm

DH-1-9 25.4mm Snap Hook (oval) 板扣 1寸 (蛋) 48.43mm

DH-1-10 32mm Snap Hook (oval) 板扣 1寸2分 (蛋) 49.76mm

DH-1-11 38mm Snap Hook (oval) 板扣 1寸半 (蛋) 49.85mm

DH-1-12 32mm Snap Hook (oval) 板扣 1寸2分 (蛋) 49.84mm

DH-1-13 38mm Snap Hook (oval) 板扣 1寸半 (蛋) 50.05mm

DH-1-14 16mm Snap Hook (oval) 板扣 5分 (蛋) 49.88mm

DH-1-15 19.6mm Snap Hook (oval) 板扣 6分 (蛋) 50.58mm

DH-1-16 25.4mm Snap Hook (oval) 板扣 1寸 (蛋) 50.67mm

DH-1-17 38mm Snap Hook (oval) 板扣 1寸半 (蛋) 52.74mm

DH-1-18 16mm Snap Hook (oval) 板扣 5分 (蛋) 48.68mm

DH-1-19 19.6mm Snap Hook (oval) 板扣 6分 (蛋) 50.21mm

DH-1-20 25.4mm Snap Hook (oval) 板扣 1寸 (蛋) 50.74mm

DH-1-21 12.7mm Snap Hook (D shape) 板扣 4分 (D) 46.55mm

DH-1-22 16mm Snap Hook (D shape) 板扣 5分 (D) 46.42mm

DH-1-23 19.6mm Snap Hook (D shape) 板扣 6分 (D) 48.26mm

DH-1-24 25.4mm Snap Hook (D shape) 板扣 1寸 (D) 49.36mm

DH-1-25 32mm Snap Hook (D shape) 板扣 1寸2分 (D) 49.16mm

DH-1-26 8mm Snap Hook (round) 板扣 2分半 (圆) 38.36mm

DH-1-27 9.5mm Snap Hook (round) 板扣 3分 (圆) 40.5mm

DH-1-28 9.5mm Snap Hook (special tail) 板扣 3分 (专用尾) 37.59mm

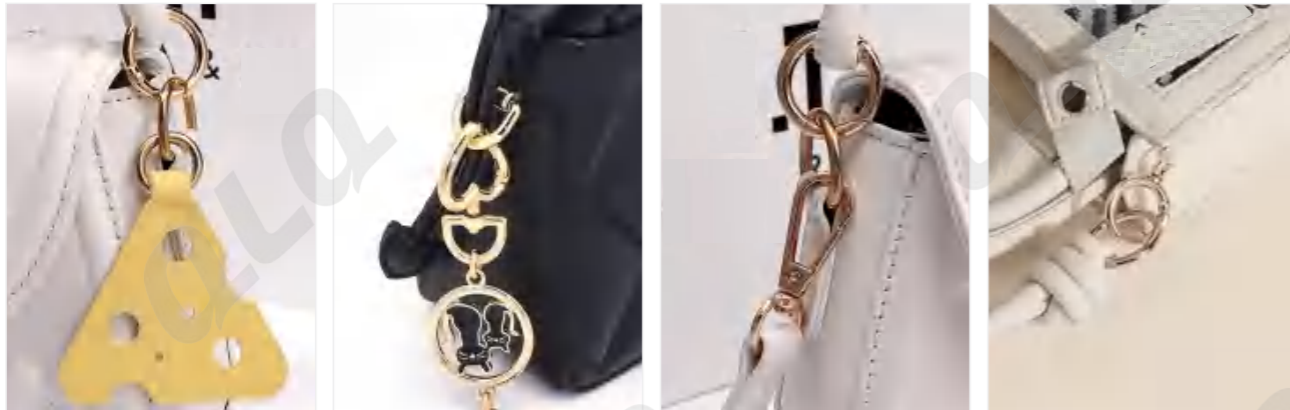
DH-1-29 9.5mm Snap Hook (fish mouth tail) 板扣 3分 (鱼嘴尾) 39.26mm

DH-1-30 9.5mm Snap Hook (round) 板扣 3分 (圆) 39.95mm

12.7mm 46.2mm	16mm 46.4mm	19.6mm 47.76mm	25.4mm 47.7mm	32mm 49.53mm	25.4mm 50.36mm	12.7mm 40.71mm	16mm 42.48mm	19.6mm 44.02mm	8mm 36.52mm
38mm 49.85mm	15.99mm	18.47mm	20.9mm	23mm	12.7mm 38.39mm	16mm 39.19mm	12.7mm 37.92mm	16mm 39.35mm	19.6mm 40.84mm
24.91mm	35.97mm	9.5mm 40.37mm	19.6mm 44.42mm	9.5mm 42.34mm	9.5mm 30.97mm	12.7mm 31.92mm	12.7mm 46.74mm	16mm 43.87mm	19.6mm 45.93mm
11mm 44.61mm	11mm 44.73mm	19.6mm 45.46mm	25.4mm 45.46mm	19.6mm 44.56mm	25.4mm 45.72mm	19.6mm 55.26mm	12.7mm 56.87mm	19.6mm 58.63mm	16mm 58.72mm
25.4mm 45.44mm	38mm 43.97mm	12.7mm 41.26mm	19.6mm 44.38mm	25.4mm 44.72mm	25.4mm 55.57mm	32mm 55.57mm	38mm 57.04mm	9.5mm 39.78mm	12.7mm 41.64mm
16mm 49.04mm	32mm 50.44mm	12.7mm 49.7mm	16mm 49.97mm	19.6mm 50.46mm	16mm 41.54mm	19.6mm 43.19mm	25.4mm 43.09mm	11mm 44.65mm	12.7mm 46.79mm

02 普通圆圈&弹簧圈

NORMAL ROUND RING & SPRING ROUND RING



货描 Description	常用线径(mm) Wire Diameter	内径宽(mm) Inner Diameter
2寸圈 50mm Round Ring	3.5/3.8/4.0/4.5/4.8/5.0/5.5/6.0	50
1寸5分圈 38mm Round Ring	3.5/3.8/4.0/4.5/4.8/5.0/5.5/6.0	38
1寸2分圈 32mm Round Ring	3.5/3.8/4.0/4.5/4.8/5.0/5.5/6.0	32
1寸圈 25.4mm Round Ring	3.5/3.8/4.0/4.5/4.8/5.0/5.5/6.0	25.4
6分圈 19.6mm Round Ring	3.5/3.8/4.0/4.5/4.8/5.0/5.5/6.0	19.6
5分圈 16mm Round Ring	3.5/3.8/4.0/4.5/4.8/5.0/5.5/6.0	16

Normal Round Rings (NRR):

- NRR-1: 16mm outer, 4.8mm inner, 4.8mm wire
- NRR-2: 20mm outer, 4.8mm inner, 4.8mm wire
- NRR-3: 25mm outer, 4.8mm inner, 4.8mm wire
- NRR-4: 32mm outer, 4.8mm inner, 4.8mm wire
- NRR-5: 38mm outer, 4.8mm inner, 4.8mm wire
- NRR-6: 16mm outer, 3.8mm inner, 3.8mm wire
- NRR-7: 20mm outer, 3mm inner, 3mm wire
- NRR-8: 25.4mm outer, 4.7mm inner, 4.7mm wire
- NRR-9: 31.5mm outer, 5.5mm inner, 5.5mm wire
- NRR-10: 38mm outer, 6.2mm inner, 6.2mm wire
- NRR-11: 51mm outer, 6.5mm inner, 6.5mm wire
- NRR-12: 63mm outer, 5.8mm inner, 5.8mm wire
- NRR-13: 63.5mm outer, 4.0mm inner, 4.0mm wire
- NRR-14: 76.2mm outer, 3.5mm inner, 3.5mm wire
- NRR-15: 88.9mm outer, 3.2mm inner, 3.2mm wire

Spring Round Rings (SRR):

- SRR-1: 12.7mm (with spring), 4.0mm wire, 17.54mm height
- SRR-2: 16mm (with spring), 4.0mm wire, 23.87mm height
- SRR-3: 19.6mm (with spring), 4.0mm wire, 26.81mm height
- SRR-4: 25.4mm (with spring), 4.0mm wire, 33.65mm height
- SRR-5: 19.6mm (with spring), 4.0mm wire, 28.13mm height
- SRR-6: 25.4mm (with spring), 4.8mm wire, 34.65mm height
- SRR-7: 32mm (with spring), 4.8mm wire, 41.14mm height
- SRR-8: 38mm (with spring), 4.8mm wire, 47.38mm height
- SRR-9: 19.6mm (with spring&loop), 4.8mm wire, 38.06mm height
- SRR-10: 19.6mm (with spring&loop), 4.8mm wire, 36.51mm height
- SRR-11: 16mm (with spring&loop), 4.8mm wire, 33.88mm height
- SRR-12: 19.6mm (with spring&loop), 4.0mm wire, 38.66mm height
- SRR-13: 19.6mm (with spring&loop), 5.0mm wire, 41.58mm height
- SRR-14: 19.6mm (with spring&loop), 4.8mm wire, 41.73mm height
- SRR-15: 25.4mm (with spring&loop), 4.8mm wire, 45.11mm height

03 D扣/D圈

D BUCKLE/RING



描述 Description	常用线径(mm) Regular Wire Diameter	内径宽(mm) Inner Diameter Width	内径高(mm) Inner Diameter Height
1寸2分*6分 D扣 32mm*19.6mm D Buckle	3.5/3.8/4.0/4.5/4.8/5.0/5.5/6.0	32	19.6
1寸*1寸 D扣 25.4*25.4mm D Buckle	3.5/3.8/4.0/4.5/4.8/5.0/5.5/6.0	25.4	25.4
1寸*6分 D扣 25.4mm*19.6mm D Buckle	3.5/3.8/4.0/4.5/4.8/5.0/5.5/6.0	25.4	19.6
6分*6分 D扣 19.6*19.6mm D Buckle	3.5/3.8/4.0/4.5/4.8/5.0/5.5/6.0	19.6	19.6
6分*5分 D扣 19.6*16mm D Buckle	3.5/3.8/4.0/4.5/4.8/5.0/5.5/6.0	19.6	16
6分*4分 D扣 19.6*12.7mm D Buckle	3.5/3.8/4.0/4.5/4.8/5.0/5.5/6.0	19.6	12.7
5分*5分 D扣 16*16mm D Buckle	3.5/3.8/4.0/4.5/4.8/5.0/5.5/6.0	16	16
5分*4分 D扣 16*12.7mm D Buckle	3.5/3.8/4.0/4.5/4.8/5.0/5.5/6.0	16	12.7

DB-1 16mm 5分*4分 (D扣) H:14mm L:16mm

DB-2 16mm 5分*5分 (D扣) H:16mm L:16mm

DB-3 20mm 6分*4分 (D扣) H:14mm L:20mm

DB-4 20mm 6分*5分 (D扣) H:16mm L:20mm

DB-5 20mm 6分*6分 (D扣) H:20mm L:20mm

DB-6 26mm 1寸*6分 (D扣) H:20mm L:26mm

DB-7 26mm 1寸*1寸 (D扣) H:26mm L:26mm

DB-8 32mm 1寸2分*6分 (D扣) H:20mm L:32mm

DB-9 40mm 1寸半 (D扣) H:33mm L:40mm

DB-10 50mm 2寸 (D扣) H:41mm L:50mm

DB-11 15mm 5分 (D扣) L:15mm

DB-12 20mm 6分 (D扣) L:20mm

DB-13 25mm 1寸 (D扣) L:25mm

DB-14 32mm 1寸2分 (D扣) L:32mm

DB-15 38mm 1寸半 (D扣) L:38mm

DB-16 9.5mm 3分 (D扣) H:6.14mm L:9.5mm

DB-17 8.65mm 3分 (D扣) H:8.1mm L:8.65mm

DB-18 9.68mm 4分 (D扣) H:10.38mm L:9.68mm

DB-19 10.14mm 3分半 (D扣) H:11.6mm L:10.14mm

DB-20 13.6mm 4分 (D扣) H:9.73mm L:13.6mm

DB-21 16.37mm 5分 (D扣) H:13.83mm L:16.37mm

DB-22 12.6mm 4分 (D扣) H:10.44mm L:12.6mm

DB-23 16.06mm 5分 (D扣) H:13.38mm L:16.06mm

DB-24 19.27mm 6分 (D扣) H:15.08mm L:19.27mm

DB-25 24.7mm 1寸 (D扣) H:20mm L:24.7mm

DB-26 18.83mm 6分 (D扣) H:14.9mm L:18.83mm

DB-27 12.16mm 4分D (D扣) H:11.93mm L:12.16mm

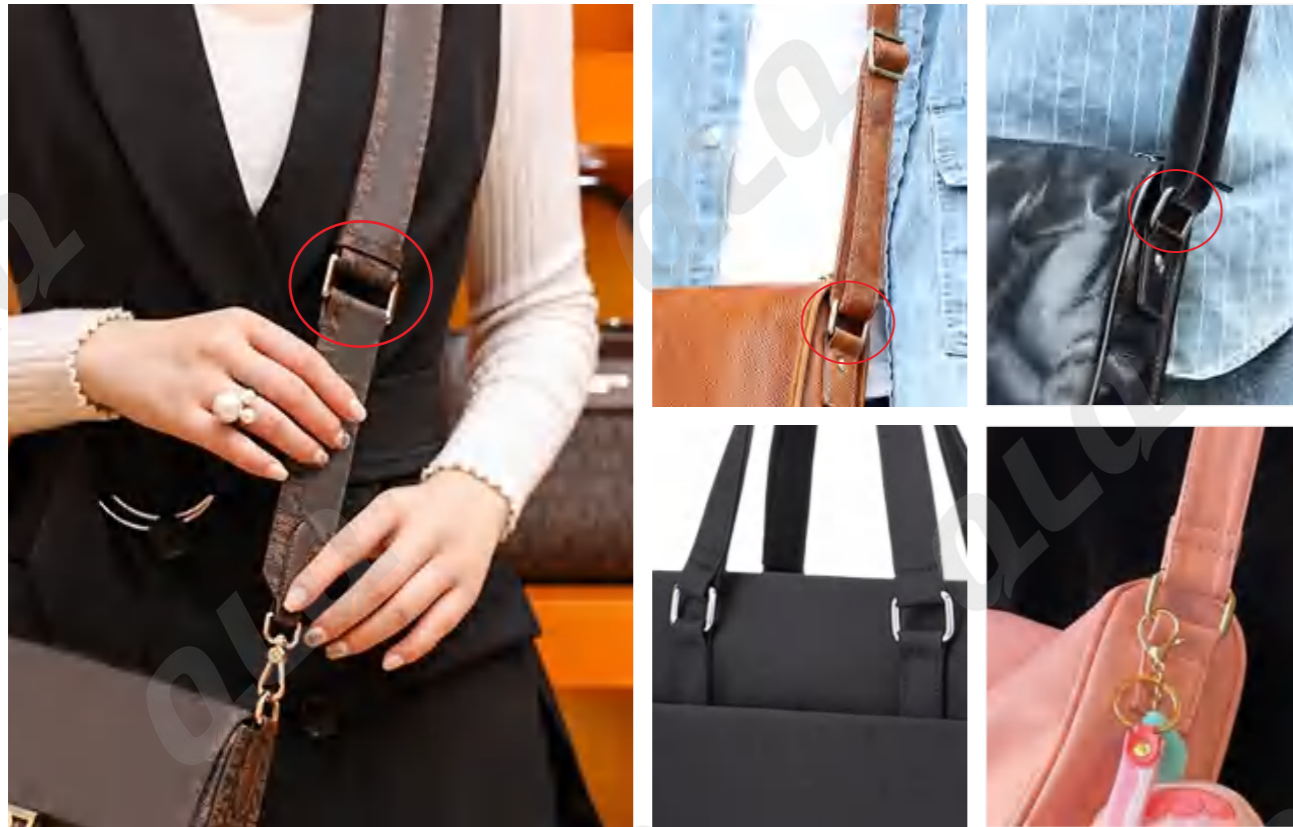
DB-28 15.72mm 5分D (D扣) H:14.32mm L:15.72mm

DB-29 19.8mm 6分 (D扣) H:18.94mm L:19.8mm

DB-30 26mm 1寸 (D扣) H:20mm L:26mm

04 方扣

SQUARE/RECTANGLE BUCKLE

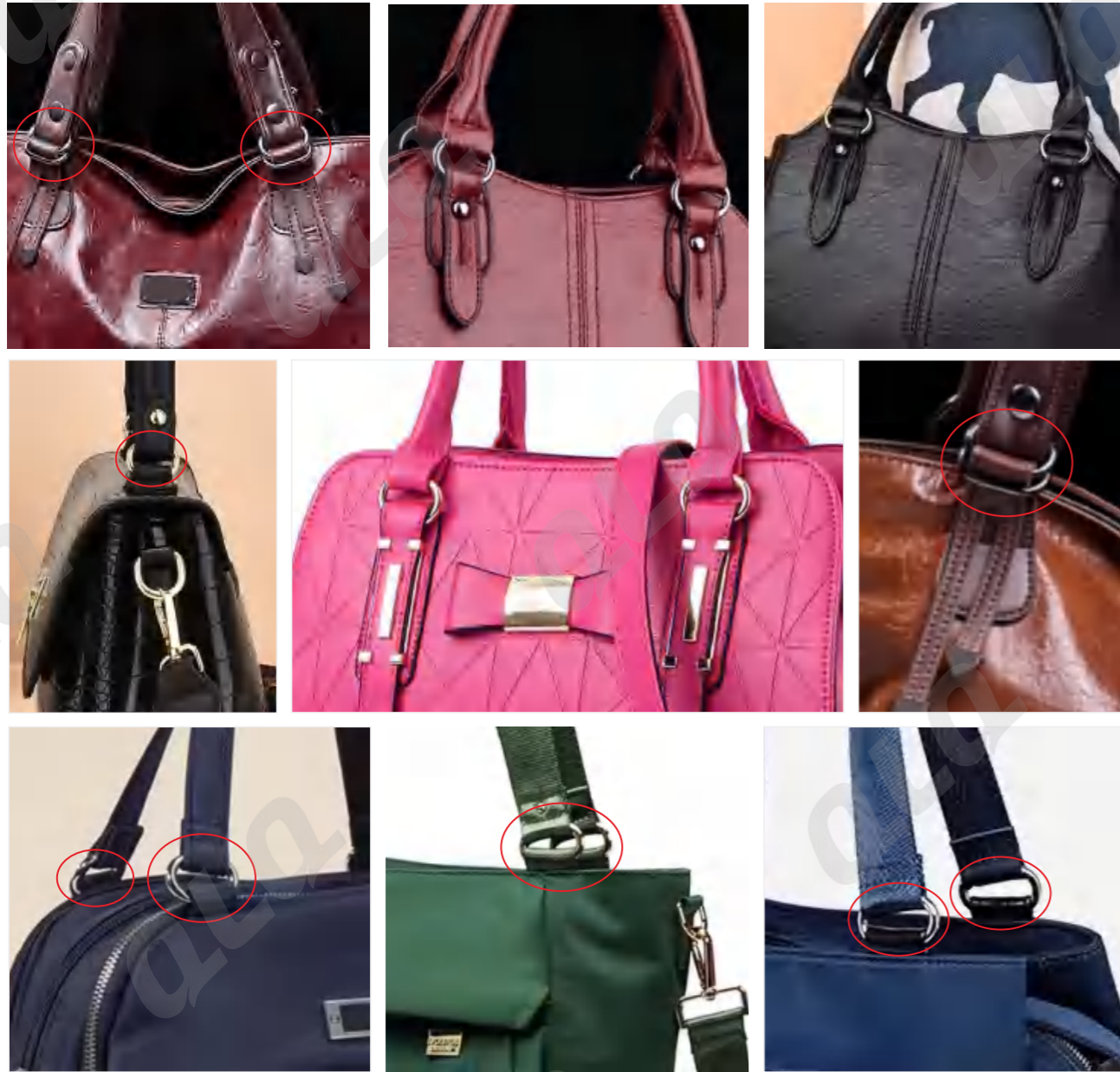


货描 Description	常用线径(mm) Regular Wire Diameter	内径宽(mm) Inner Diameter Width	内径高(mm) Inner Diameter Height
1寸5分*6分 方扣 38*19.6mm Square Buckle	3.5/3.8/4.0/4.5/4.8/5.0/5.5/6.0	38	19.6
1寸2分*6分 方扣 32*19.6mm Square Buckle	3.5/3.8/4.0/4.5/4.8/5.0/5.5/6.0	32	19.6
1寸*6分 方扣 25.4*19.6mm Square Buckle	3.5/3.8/4.0/4.5/4.8/5.0/5.5/6.0	25.4	19.6
6分*6分 方扣 19.6*19.6mm Square Buckle	3.5/3.8/4.0/4.5/4.8/5.0/5.5/6.0	19.6	19.6
6分*5分 方扣 19.6*16mm Square Buckle	3.5/3.8/4.0/4.5/4.8/5.0/5.5/6.0	19.6	16
6分*4分 方扣 19.6*13mm Square Buckle	3.5/3.8/4.0/4.5/4.8/5.0/5.5/6.0	19.6	13
5分*5分 方扣 16*16mm Square Buckle	3.5/3.8/4.0/4.5/4.8/5.0/5.5/6.0	16	16

 SRB-1 20mm Rectangle Shape 6分*4分 (方扣)	 SRB-2 20mm Rectangle Shape 6分*4分 (方扣)	 SRB-3 20mm Square Shape 6分*6分 (方扣)	 SRB-4 26mm Rectangle Shape 1寸*6分 (方扣)	 SRB-5 33mm Rectangle Shape 1寸2分*6分 (方扣)
 SRB-6 39mm Rectangle Shape 1寸半*6分 (方扣)	 SRB-7 10mm Rectangle Shape 3分 (方扣)	 SRB-8 12mm Rectangle Shape 4分 (方扣)	 SRB-9 15mm Rectangle Shape 5分 (方扣)	 SRB-10 20mm Rectangle Shape 6分 (方扣)
 SRB-11 25mm Rectangle Shape 1寸 (方扣)	 SRB-12 32mm Rectangle Shape 1寸2分 (方扣)	 SRB-13 12.49mm Rectangle Shape 4分*3分 (方扣)	 SRB-14 25.38mm Rectangle Shape 1寸*4分 (方扣)	 SRB-15 31.73mm Rectangle Shape 1寸2分*4分 (方扣)
 SRB-16 37.85mm Rectangle Shape 1寸5分*4分 (方扣)	 SRB-17 19.1mm Rectangle Shape 6分*4分 (方扣)	 SRB-18 19.65mm Rectangle Shape 6分*5分 (方扣)	 SRB-19 25.3mm Rectangle Shape 1寸 (方扣)	 SRB-20 31.76mm Rectangle Shape 1寸2分 (方扣)
 SRB-21 37.88mm Rectangle Shape 1寸半 (方扣)	 SRB-22 18.99mm Rectangle Shape 6分*4分 (工字方扣)	 SRB-23 19.2mm Rectangle Shape 6分*5分 (工字方扣)	 SRB-24 18.9mm Rectangle Shape 6分 (工字方扣)	 SRB-25 18.5mm Rectangle Shape 6分 (工字方扣)
 SRB-26 24.67mm Rectangle Shape 1寸 (工字方扣)	 SRB-27 12.79mm Rectangle Shape 4分 (菱角方扣)	 SRB-28 15.81mm Rectangle Shape 5分 (菱角方扣)	 SRB-29 18.66mm Rectangle Shape 6分 (菱角方扣)	 SRB-30 25.28mm Rectangle Shape 1寸 (菱角方扣)

05 蛋扣

OVAL BUCKLE



货描 Description	常用线径(mm) Regular Wire Diameter	内径宽(mm) Inner Diameter Width	内径高(mm) Inner Diameter Height
1寸5分*5分 且扣 38*16mm Oval Buckle	3.5/3.8/4.0/4.5/4.8/5.0/5.5/6.0	38	16
1寸2分*5分 且扣 32*16mm Oval Buckle	3.5/3.8/4.0/4.5/4.8/5.0/5.5/6.0	32	16
1寸*5分 且扣 25.4*16mm Oval Buckle	3.5/3.8/4.0/4.5/4.8/5.0/5.5/6.0	25.4	16
6分*4分 且扣 19.6*12.7mm Oval Buckle	3.5/3.8/4.0/4.5/4.8/5.0/5.5/6.0	19.6	12.7

OB-1 20mm 6分*4分 (蛋扣)
L:20mm W:13mm

OB-2 26mm 1寸*5分 (蛋扣)
L:26mm W:15mm

OB-3 32mm 1寸2分*5分 (蛋扣)
L:32mm W:15mm

OB-4 38mm 1寸半*5分 (蛋扣)
L:38mm W:16mm

OB-5 20mm 6分*4分 (蛋扣)
L:20mm W:13mm

OB-6 26mm 1寸*5分 (蛋扣)
L:26mm W:15mm

OB-7 32mm 1寸2分*5分 (蛋扣)
L:32mm W:15mm

OB-8 38mm 1寸半*5分 (蛋扣)
L:38mm W:16mm

OB-9 20mm 6分*4分 (蛋扣)
L:20mm W:13mm

OB-10 26mm 1寸*5分 (蛋扣)
L:26mm W:15mm

OB-11 32mm 1寸2分*5分 (蛋扣)
L:32mm W:15mm

OB-12 38mm 1寸半*5分 (蛋扣)
L:38mm W:16mm

OB-13 20mm 6分*4分 (蛋扣)
L:20mm W:13mm

OB-14 26mm 1寸*5分 (蛋扣)
L:26mm W:15mm

OB-15 32mm 1寸2分*5分 (蛋扣)
L:32mm W:15mm

OB-16 38mm 1寸半*5分 (蛋扣)
L:38mm W:16mm

OB-17 20mm (flat wire) 6分 (扁线蛋扣)
L:20mm

OB-18 25mm (flat wire) 1寸 (扁线蛋扣)
L:25mm

OB-19 30mm (flat wire) 1寸2分 (扁线蛋扣)
L:30mm

OB-20 38mm (flat wire) 1寸半 (扁线蛋扣)
L:38mm

OB-21 20mm (rainbow) 6分 (彩虹色蛋扣)
L:20mm

OB-22 25mm (rainbow) 1寸 (彩虹色蛋扣)
L:25mm

OB-23 20mm (flat wire, rainbow) 6分 (彩虹色扁线蛋扣)
W:11mm L:20mm

OB-24 25mm (flat wire, rainbow) 1寸 (彩虹色扁线蛋扣)
W:11mm L:25mm

OB-25 38mm (flat wire, rainbow) 1寸2分 (彩虹色扁线蛋扣)
W:11mm L:38mm

OB-26 26mm (abnormal shape) 1寸 (异形蛋扣)
L:26mm

OB-27 40mm (abnormal shape) 1寸半 (异形蛋扣)
L:40mm

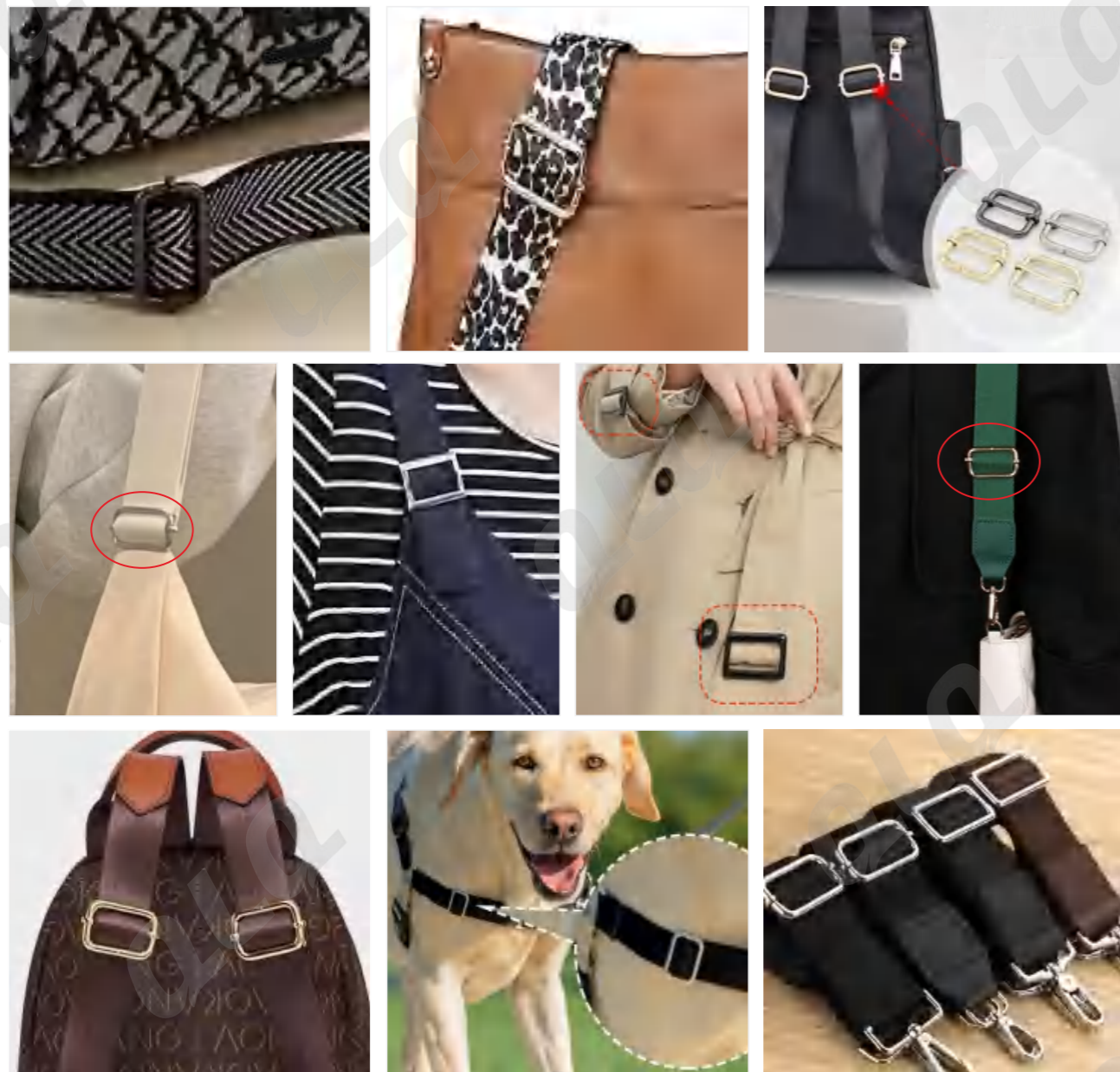
OB-28 34.9mm (spring) 6分 (蛋形弹簧圈)
19.6mm 34.9mm

OB-29 41.44mm (spring) 1寸 (蛋形弹簧圈)
25.4mm 41.44mm

OB-30 47.31mm (spring) 1寸2分 (蛋形弹簧圈)
32mm 47.31mm

06 拉芯扣&日字扣

ROLLER BUCKLE & TRI-GLIDE BUCKLE



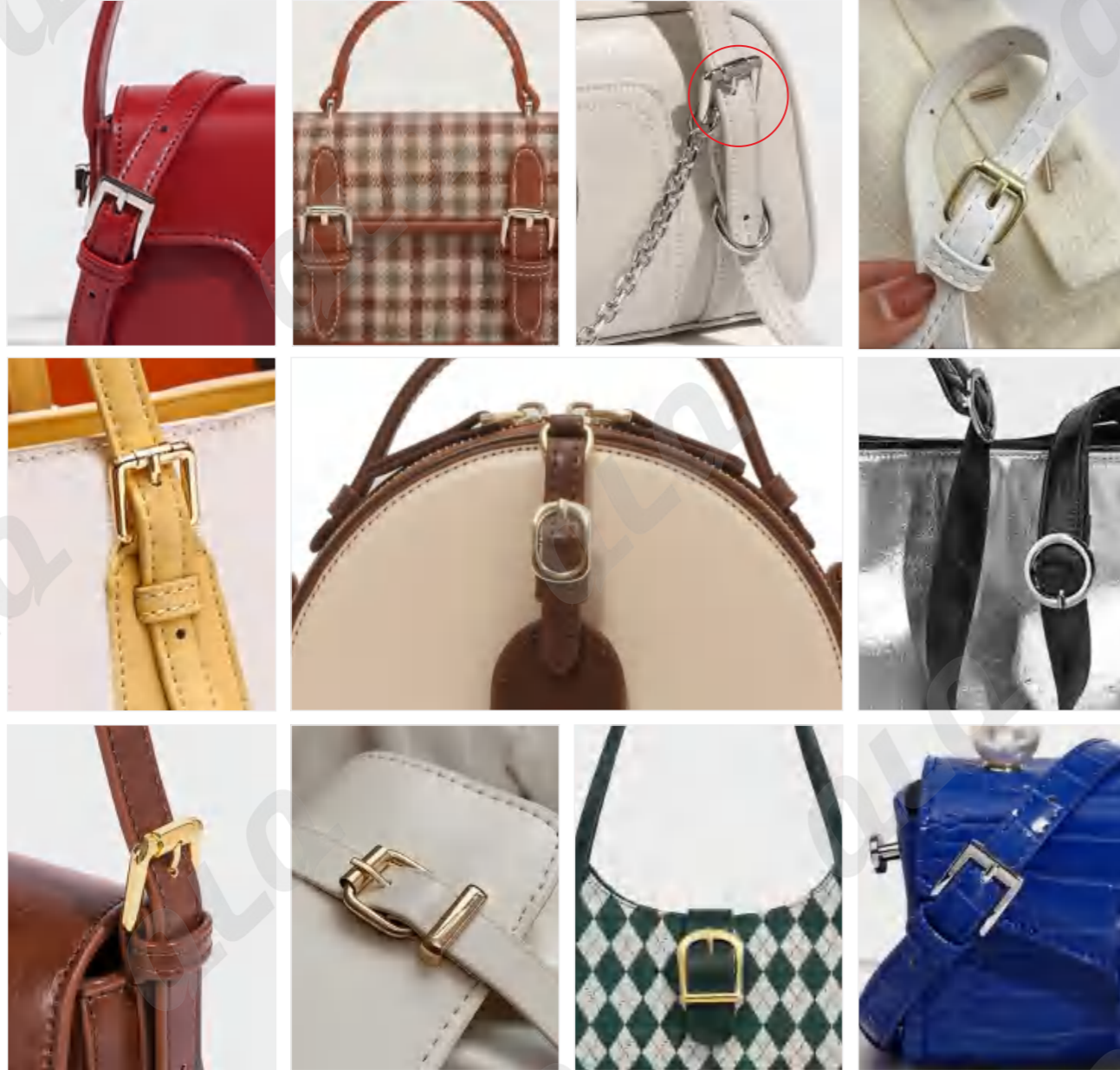
货描 Description	常用线径(mm) Regular Wire Diameter	内径宽(mm) Inner Diameter Width	内径高(mm) Inner Diameter Height
1寸5分*6分 拉芯扣 38mm*20mm Roller Buckle	3.5/3.8/4.0/4.5/4.8/5.0/5.5/6.0	38	20
1寸2分*6分 拉芯扣 32mm*20mm Roller Buckle	3.5/3.8/4.0/4.5/4.8/5.0/5.5/6.0	32	20
1寸*1寸 拉芯扣 25.4mm*25.4mm Roller Buckle	3.5/3.8/4.0/4.5/4.8/5.0/5.5/6.0	25.4	25.4
1寸*6分 拉芯扣 25.4mm*19.6mm Roller Buckle	3.5/3.8/4.0/4.5/4.8/5.0/5.5/6.0	25.4	19.6
6分*6分 拉芯扣 19.6mm*19.6mm Roller Buckle	3.5/3.8/4.0/4.5/4.8/5.0/5.5/6.0	19.6	19.6

 H:20mm L:12mm RB-1 12mm Roller Buckle 4分*6分 (拉芯扣)	 H:25mm L:12mm RB-2 12mm Roller Buckle 4分*1寸 (拉芯扣)	 H:25mm L:20mm RB-3 20mm Roller Buckle 6分*1寸 (拉芯扣)	 H:15mm L:15mm RB-4 15mm Roller Buckle 5分*5分 (拉芯扣)	 H:20mm L:20mm RB-5 20mm Roller Buckle 6分*6分 (拉芯扣)
 H:20mm L:25mm RB-6 25mm Roller Buckle 1寸*6分 (拉芯扣)	 H:20mm L:32mm RB-7 32mm Roller Buckle 1寸2分*6分 (拉芯扣)	 H:25mm L:32mm RB-8 32mm Roller Buckle 1寸2分*1寸 (拉芯扣)	 H:20mm L:38mm RB-9 38mm Roller Buckle 1寸半*6分 (拉芯扣)	 H:26mm L:26mm RB-10 26mm Roller Buckle 1寸拉芯 (拉芯扣)
 H:20mm L:26mm RB-11 26mm Roller Buckle 1寸*6分 (拉芯扣)	 H:20mm L:33mm RB-12 33mm Roller Buckle 1寸2分*6分 (拉芯扣)	 H:20mm L:40mm RB-13 40mm Roller Buckle 1寸5分*6分 (拉芯扣)	 H:26mm L:26mm RB-14 26mm Roller Buckle 1寸*1寸 (拉芯扣)	 H:20mm L:26mm RB-15 26mm Roller Buckle 1寸*6分 (拉芯扣)
 H:20mm L:33mm RB-16 33mm Roller Buckle 1寸2分*6分 (拉芯扣)	 H:20mm L:40mm RB-17 40mm Roller Buckle 1寸5分*6分 (拉芯扣)	 H:20mm L:26mm RB-18 26mm Roller Buckle 1寸*6分 (拉芯扣)	 H:26mm L:26mm RB-19 26mm Roller Buckle 1寸*1寸 (拉芯扣)	 H:20mm L:33mm RB-20 33mm Roller Buckle 1寸2分*6分 (拉芯扣)
 H:20mm L:40mm RB-21 40mm Roller Buckle 1寸5分*6分 (拉芯扣)	 H:18.17mm L:11.98mm TGB-1 11.98mm Tri-glide Buckle 4分 (日字扣)	 H:17.09mm L:19.12mm TGB-2 19.12mm Tri-glide, Round Wire 6分*6分 (圆线日字扣)	 H:14.77mm L:19.77mm TGB-3 19.77mm Tri-glide, Round Wire 6分*4分 (圆线日字扣)	 H:20.09mm L:31.57mm TGB-4 31.57mm Tri-glide, Round Corner 1寸2 (圆角日字扣)
 H:10mm L:12.56mm TGB-5 12.56mm Tri-glide Buckle 4分*3分 (日字扣)	 H:12.93mm L:18.74mm TGB-6 18.74mm Tri-glide Buckle 6分*4分 (日字扣)	 H:16.79mm L:25.2mm TGB-7 25.2mm Tri-glide Buckle 1寸*5分 (日字扣)	 H:18.65mm L:31.5mm TGB-8 31.5mm Tri-glide Buckle 1寸*2*6 (日字扣)	 H:18.76mm L:37.98mm TGB-9 37.98mm Tri-glide Buckle 1寸*5*6分 (日字扣)

QLQ QUALITY | LOWER COST | QUICKLY

07 针扣

PIN BUCKLE

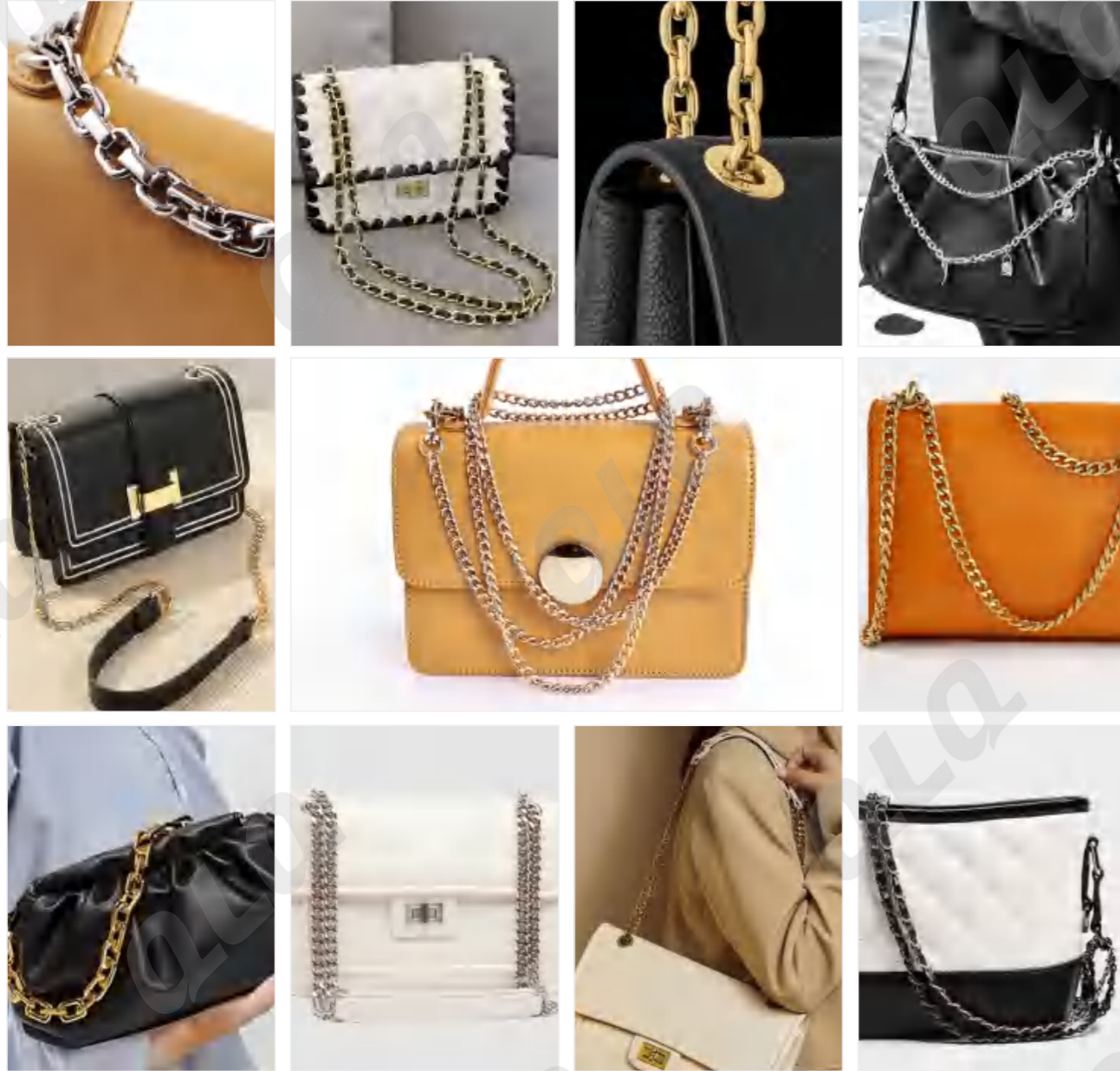


货插 Description	常用线径(mm) Regular Wire Diameter	内径宽(mm) Inner Diameter Width	内径高(mm) Inner Diameter Height
4分*4分 针扣 12.7mm*12.7mm Pin Buckle	3.5/3.8/4.0/4.5/4.8/5.0/5.5/6.0	12.7	12.7
5分*5分 针扣 16mm*16mm Pin Buckle	3.5/3.8/4.0/4.5/4.8/5.0/5.5/6.0	16	16
6分*5分 针扣 19.6mm*16mm Pin Buckle	3.5/3.8/4.0/4.5/4.8/5.0/5.5/6.0	19.6	16
1寸*6分 针扣 25.4mm*19.6mm Pin Buckle	3.5/3.8/4.0/4.5/4.8/5.0/5.5/6.0	25.4	19.6
1寸2分*6分 针扣 32mm*19.6mm Pin Buckle	3.5/3.8/4.0/4.5/4.8/5.0/5.5/6.0	32	19.6

 L:16mm H:16mm PB-1 16mm 6分(针扣)	 L:20mm H:12mm PB-2 20mm 5分(针扣)	 L:25mm H:15mm PB-3 25mm 1寸(针扣)	 L:32mm H:19mm PB-4 32mm 1寸2分(针扣)	 L:38mm H:19mm PB-5 38mm 1寸半(针扣)
 L:10.4mm H:9.96mm PB-6 10.4mm 3分(针扣)	 L:12.58mm H:11.42mm PB-7 12.58mm (tank) 4分(针扣(槽))	 L:14.68mm H:12.86mm PB-8 14.68mm (thick) 5分(针扣(粗))	 L:19.15mm H:13.44mm PB-9 19.15mm 6分(针扣)	 L:25.24mm H:18.26mm PB-10 25.24mm 1寸(针扣)
 L:20.26mm H:13.95mm PB-11 20.26mm (roller) 6分(滚动针扣)	 L:9.22mm H:12.19mm PB-12 9.22mm (T shape) 3分(T形针扣)	 L:11.8mm H:12.3mm PB-13 11.8mm (T shape) 4分(T形针扣)	 L:15.79mm H:14.53mm PB-14 15.79mm (T shape) 5分(T形针扣)	 L:19.98mm H:14.73mm PB-15 19.98mm (T shape) 7分(T形针扣)
 L:10.46mm H:10.2mm PB-16 10.46mm (rectangle) 3分(方形针扣)	 L:13.88mm H:13.1mm PB-17 13.88mm (rectangle) 4分(方形针扣)	 L:15.95mm H:15.58mm PB-18 15.95mm (rectangle) 5分(方形针扣)	 L:19.91mm H:19.76mm PB-19 19.91mm (rectangle) 6分(方形针扣)	 L:15.17mm H:12.67mm PB-20 15.17mm (flat pin) 5分(扁针扣)
 L:13.2mm H:11.76mm PB-21 13.2mm (semi-circle) 3分(半圆针扣)	 L:17.47mm H:15.44mm PB-22 17.47mm (semi-circle) 5分(半圆针扣)	 L:20.97mm H:18.73mm PB-23 20.97mm (semi-circle) 6分(半圆针扣)	 L:25mm H:29.17mm PB-24 25mm (semi-circle) 1寸(半圆针扣)	 L:18.73mm H:17.3mm PB-25 18.73mm (heel bar buckle) 6分(肥仔针扣)
 L: 25.23mm H:20.23mm PB-26 25.23mm (heel bar buckle) 1寸(肥仔针扣)	 L:12.94mm H:13.68mm PB-27 12.94mm (belt buckle) 4分(皮带扣)	 L:15.3mm H:17.67mm PB-28 15.3mm (U shape, belt buckle) 5分(U形皮带扣)	 L:19.26mm H:20.55mm PB-29 19.26mm (belt buckle) 6分(皮带扣)	 L:24.98mm H:27.98mm PB-30 24.98mm (belt buckle) 1寸(皮带扣)

08 链条

BAG CHAIN



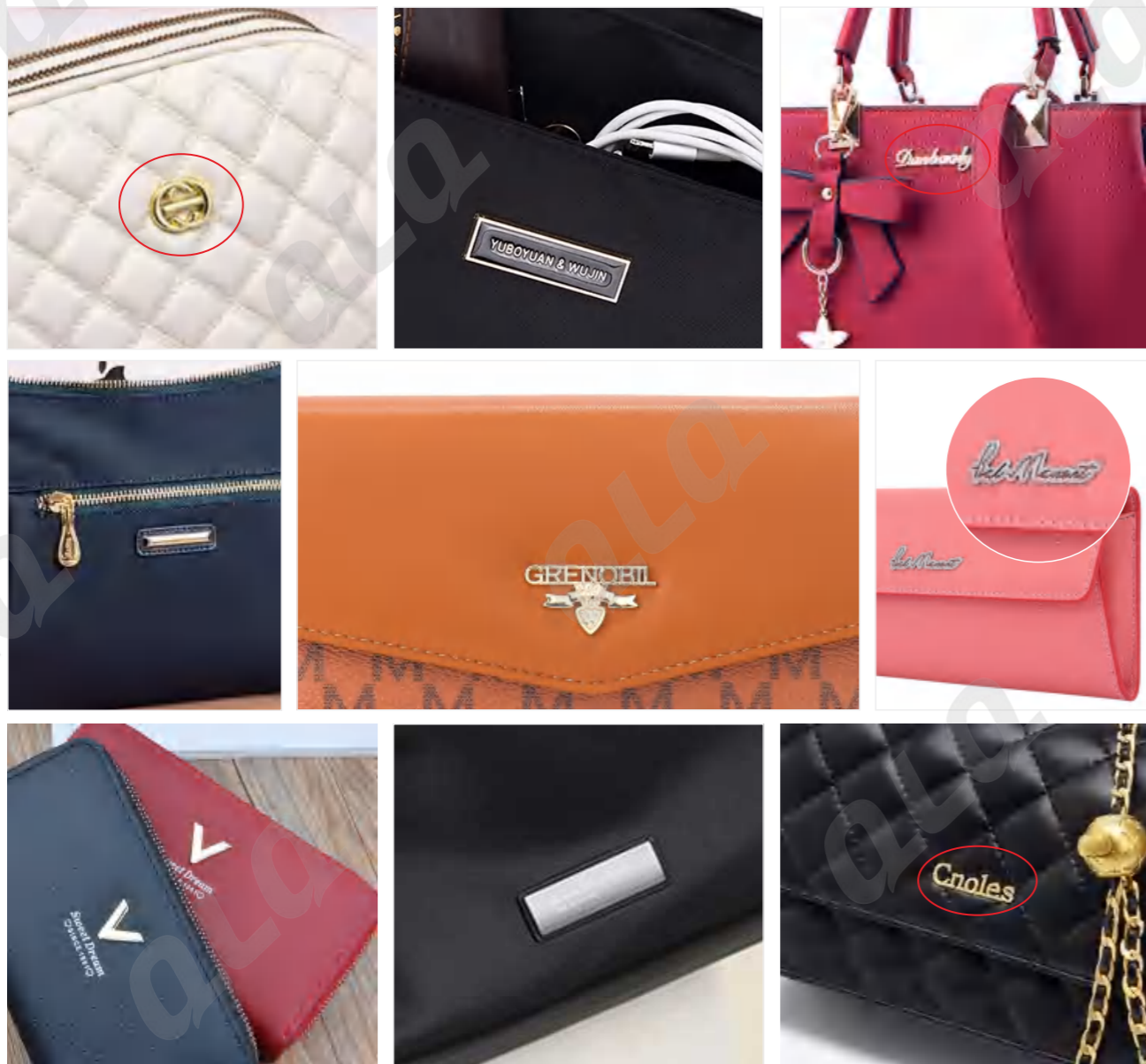
<p>Weight:118g/m Color:shiny nickel Material:iron</p> <p>2.2mm 13mm 8.9mm</p>	<p>Weight:267g/m Color:shiny nickel Material:zinc alloy</p> <p>2.11mm 12.6mm 9.4mm 4.5mm</p>	<p>Weight:88.3g/m Color:light rose golden Material:aluminum</p> <p>3.3mm 16.8mm 12.6mm</p>
---	--	--



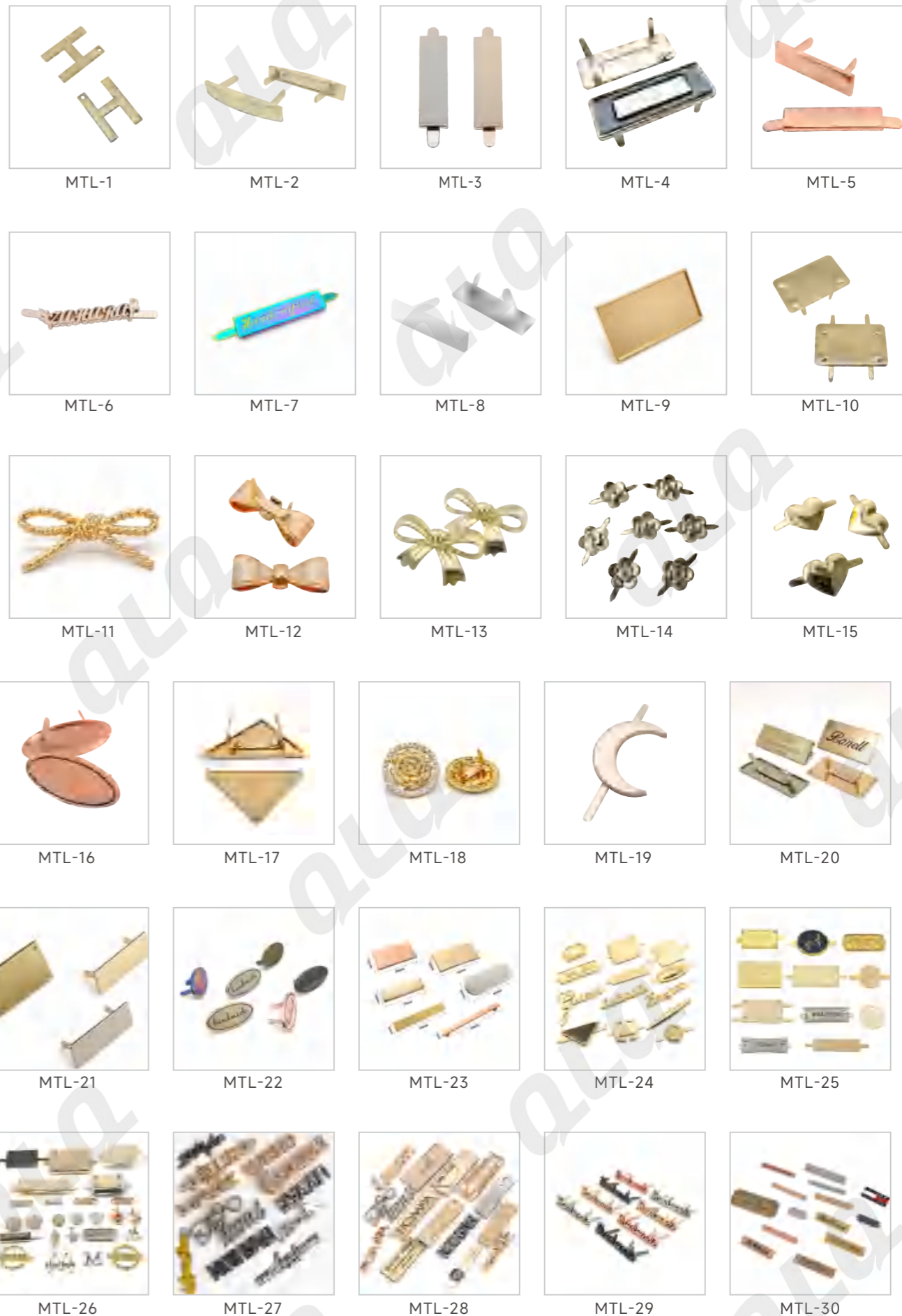
S/N	Sample	Specs	S/N	Sample	Specs	S/N	Sample	Specs
01		6.0X20.5X27.2	13		3.0x10x14.3	25		3.5x12.5x17
02		6.0X22.2X27.2	14		2.8x9.5x13.5	26		3.0x10x14
03		5.0X16X23.6	15		2.3x8x12	27		3.0x11x14
04		5.0X16X23.6	16		1.6x7.5x11	28		3.0x11x14
05		4.5X15X20.5	17		4.4x17x20	29		3.0x10x14
06		4.5X15X20.5	18		4.4x17x20	30		2.8x9.5x13.5
07		4.0X12.5X18.5	19		4.4x17x20	31		2.6x8.5x11.8
08		3.8X13X18.7	20		4.5x14x21	32		2.5x8.5x11.7
09		3.8X12.5X18	21		4.0x14x20	33		2.2x8x10
10		3.8X13X16.3	22		3.5x13x17	34		2.4x8.5x11.8
11		3.4X11X16.3	23		3.5x12x17	35		2.0x7x10.5
12		3.4X11X16.3	24		3.5x11.5x16	36		6.8x30x40

09 金属标牌

METAL LABEL



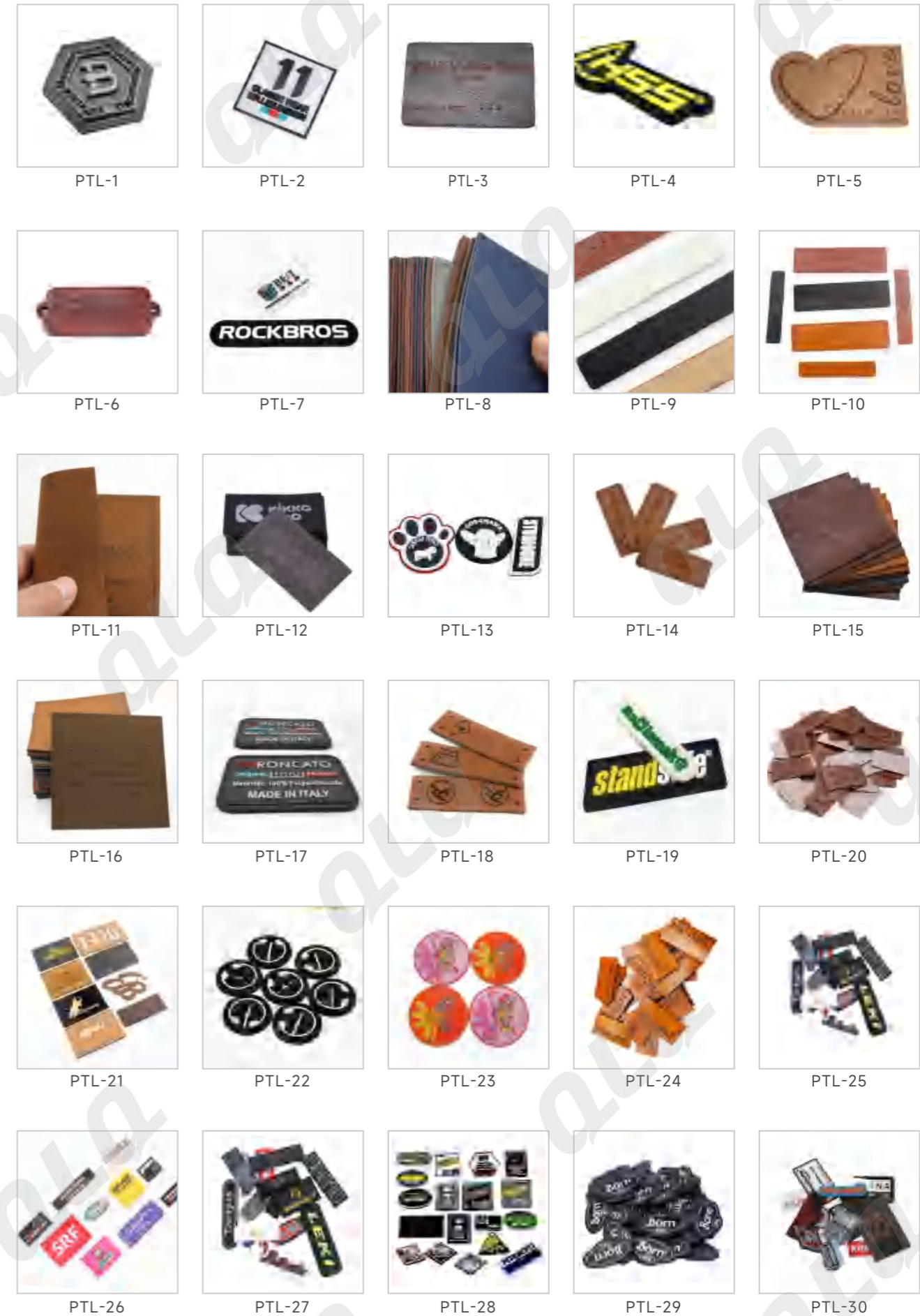
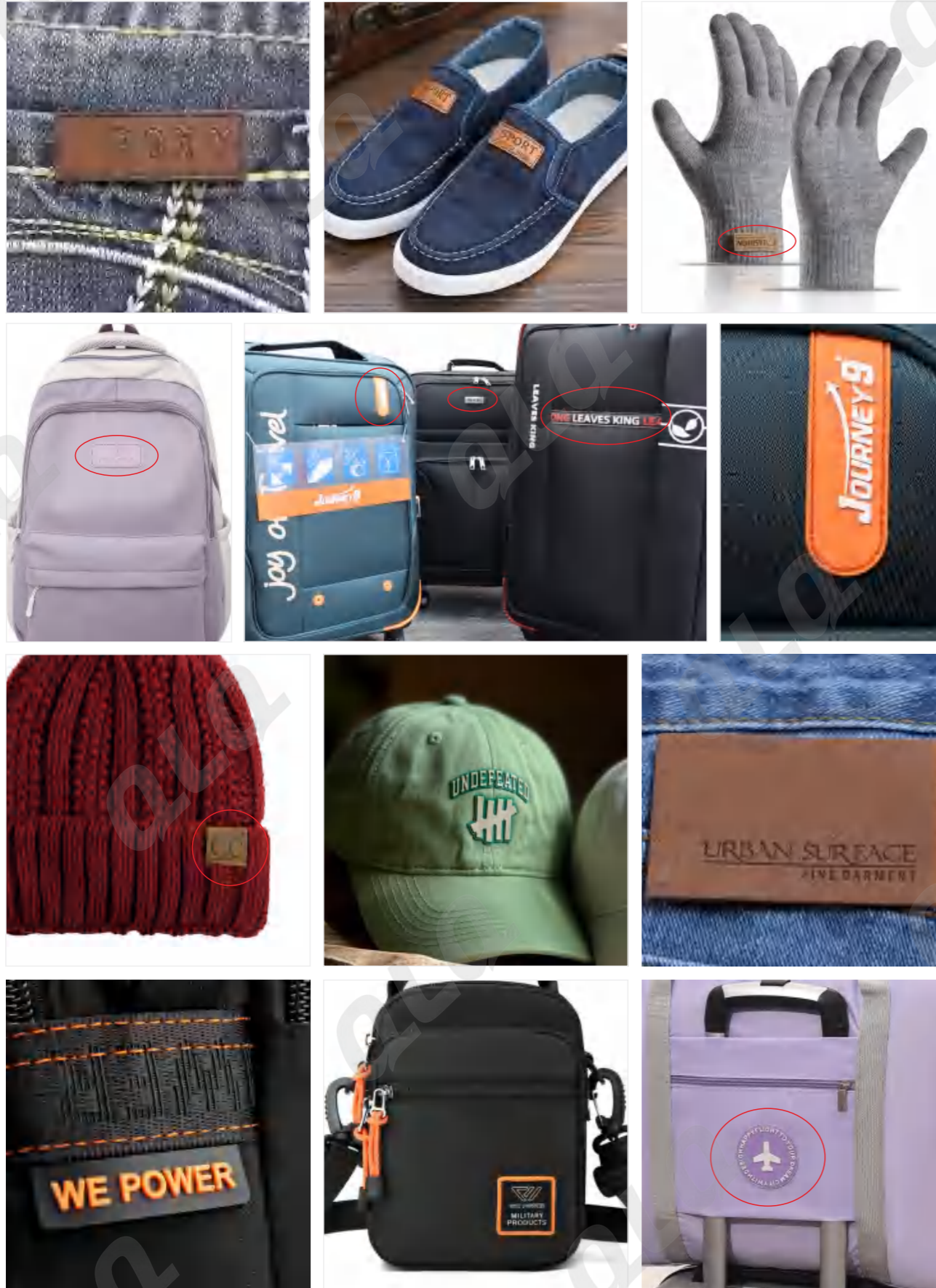
Above logos on the bags are just for reference!



Above logos on the metal labels are just for reference!

10 塑料标牌

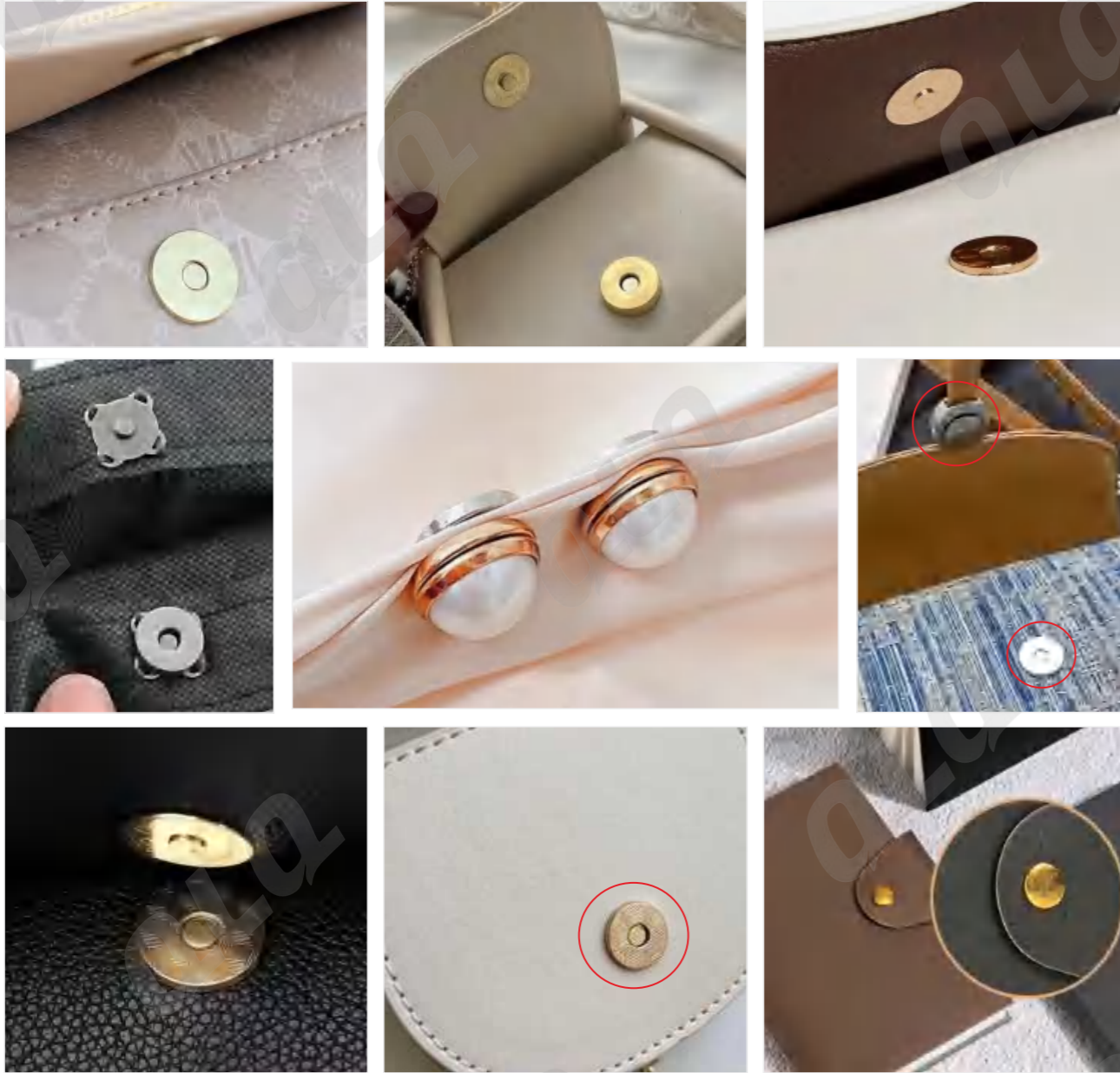
PLASTIC LABEL



Above logos on the plastic label are just for reference!

11 磁钮

MAGNETIC BUTTON



磁钮 Description	宽度(mm) Width	厚度 Thickness	磁钮盖 Cap Shape	磁性 Magnetic	脚 Foot	磁钮 Description	宽度(mm) Width	厚度(mm) Thickness	磁性 Magnetic
磁钮 Magnetic Button	10	普通/超薄 Normal/Ultrathin	无盖/半盖/全盖 Non-Cap/Half-Cap/Full-Cap	普通/强磁 Normal/Strong	铆钉/双脚 Rivet/Double Feet	隐形磁钮 Invisible Magnetic Button	10	2.5/2.3/2.1/1.9 /1.7/1.3/1.0	普通/强磁 Normal/Strong
磁钮 Magnetic Button	12	普通/超薄 Normal/Ultrathin	无盖/半盖/全盖 Non-Cap/Half-Cap/Full-Cap	普通/强磁 Normal/Strong	铆钉/双脚 Rivet/Double Feet	隐形磁钮 Invisible Magnetic Button	15	2.5/2.3/2.1/1.9 /1.7/1.3/1.0	普通/强磁 Normal/Strong
磁钮 Magnetic Button	14	普通/超薄 Normal/Ultrathin	无盖/半盖/全盖 Non-Cap/Half-Cap/Full-Cap	普通/强磁 Normal/Strong	铆钉/双脚 Rivet/Double Feet	隐形磁钮 Invisible Magnetic Button	20	2.5/2.3/2.1/1.9 /1.7/1.3/1.0	普通/强磁 Normal/Strong
磁钮 Magnetic Button	18	普通/超薄 Normal/Ultrathin	无盖/半盖/全盖 Non-Cap/Half-Cap/Full-Cap	普通/强磁 Normal/Strong	铆钉/双脚 Rivet/Double Feet	隐形磁钮 Invisible Magnetic Button	25	2.5/2.3/2.1/1.9 /1.7/1.3/1.0	普通/强磁 Normal/Strong



Available models: thick & thin
One cap



Available models: thick & thin
Two caps



Thickness 厚度: 2.5mm
Diameter直径: 10mm

Ultrathin with Strong Magnet



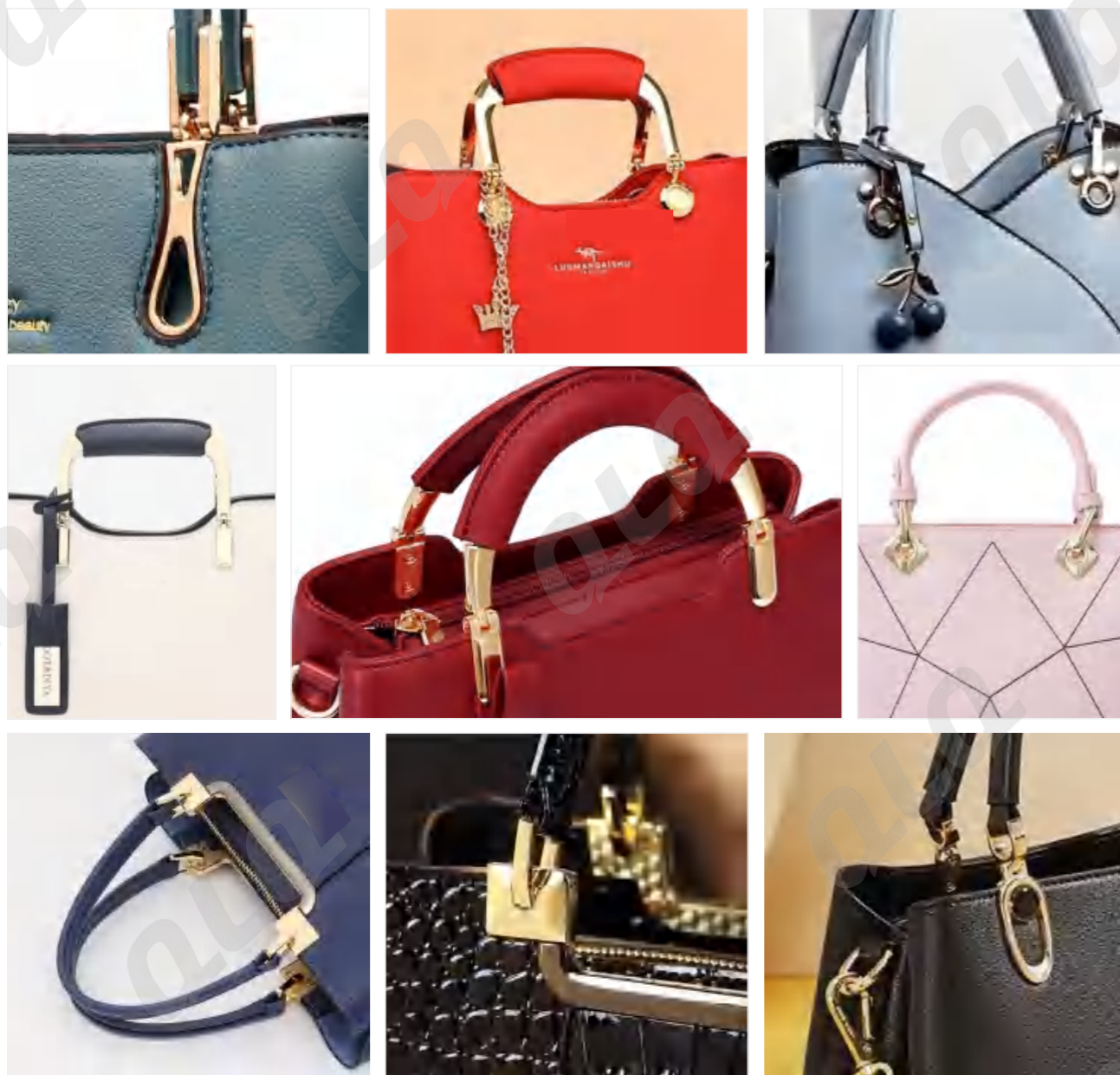
Thickness 厚度: 3.0mm
Diameter直径: 18mm

Ultrathin with Strong Magnet



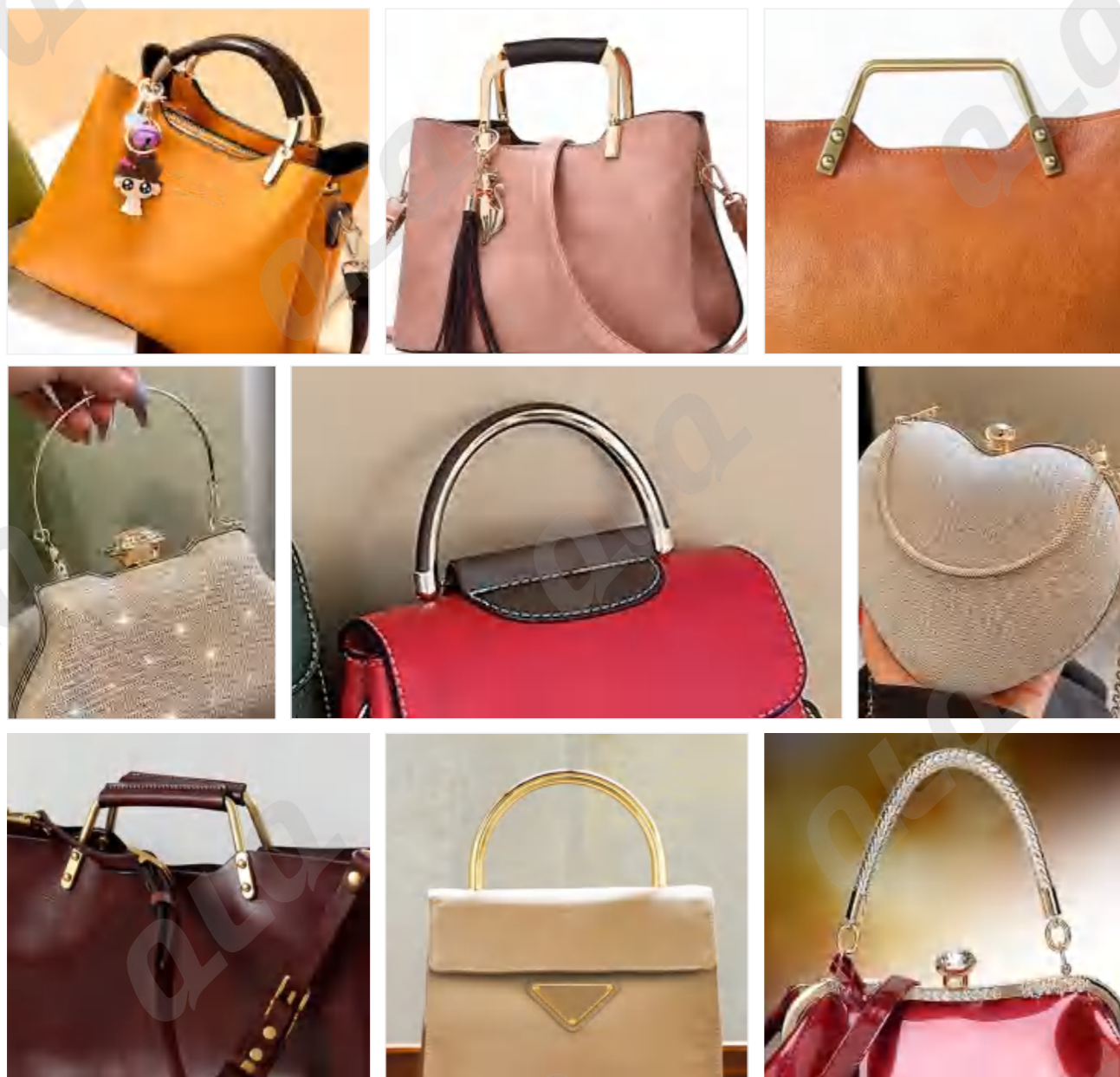
12 侧夹

SIDE CLIP

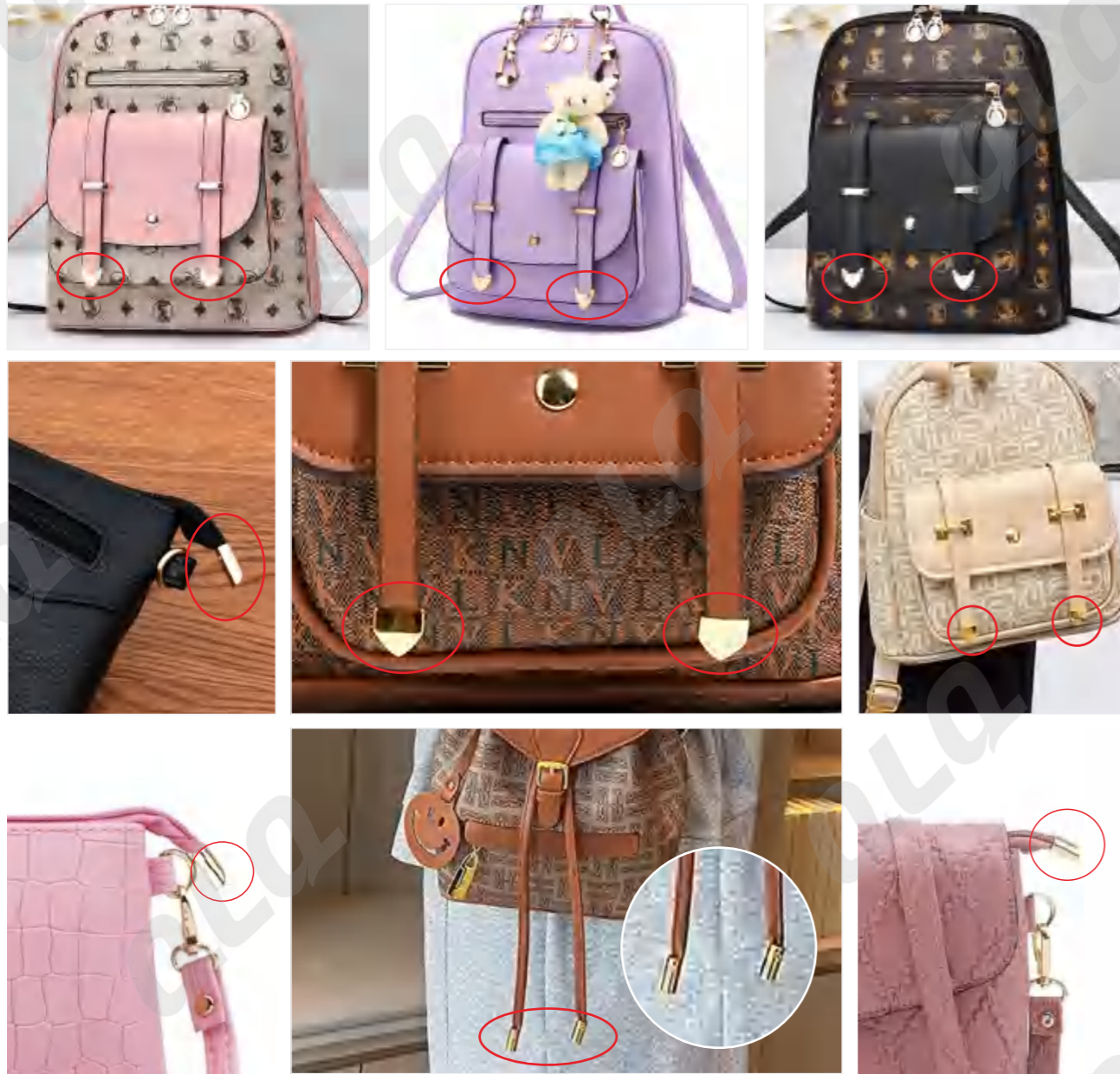


尺寸度量方法
Dimension Measurement Method

SC-1 15x10mm	SC-2 18x13mm	SC-3 20x10mm	SC-4 25x9mm	SC-5 27x15mm
SC-6 28.5x11mm	SC-7 28x10mm	SC-8 28x11mm	SC-9 30x20mm	SC-10 33x21mm
SC-11 34x21mm	SC-12 35x13mm	SC-13 35x15mm	SC-14 40x10mm	SC-15 50x47mm
SC-16 78x10mm	SC-17 17x10mm	SC-18 35x9mm	SC-19 28x10mm	SC-20 29x12mm
SC-21 30x5.5mm	SC-22 23x13.7mm	SC-23 44x9mm	SC-24 45x15mm	SC-25 51x30mm
SC-26 42x12mm	SC-27 42x13.5mm	SC-28 28x12mm	SC-29 20x23mm	SC-30 15x10mm



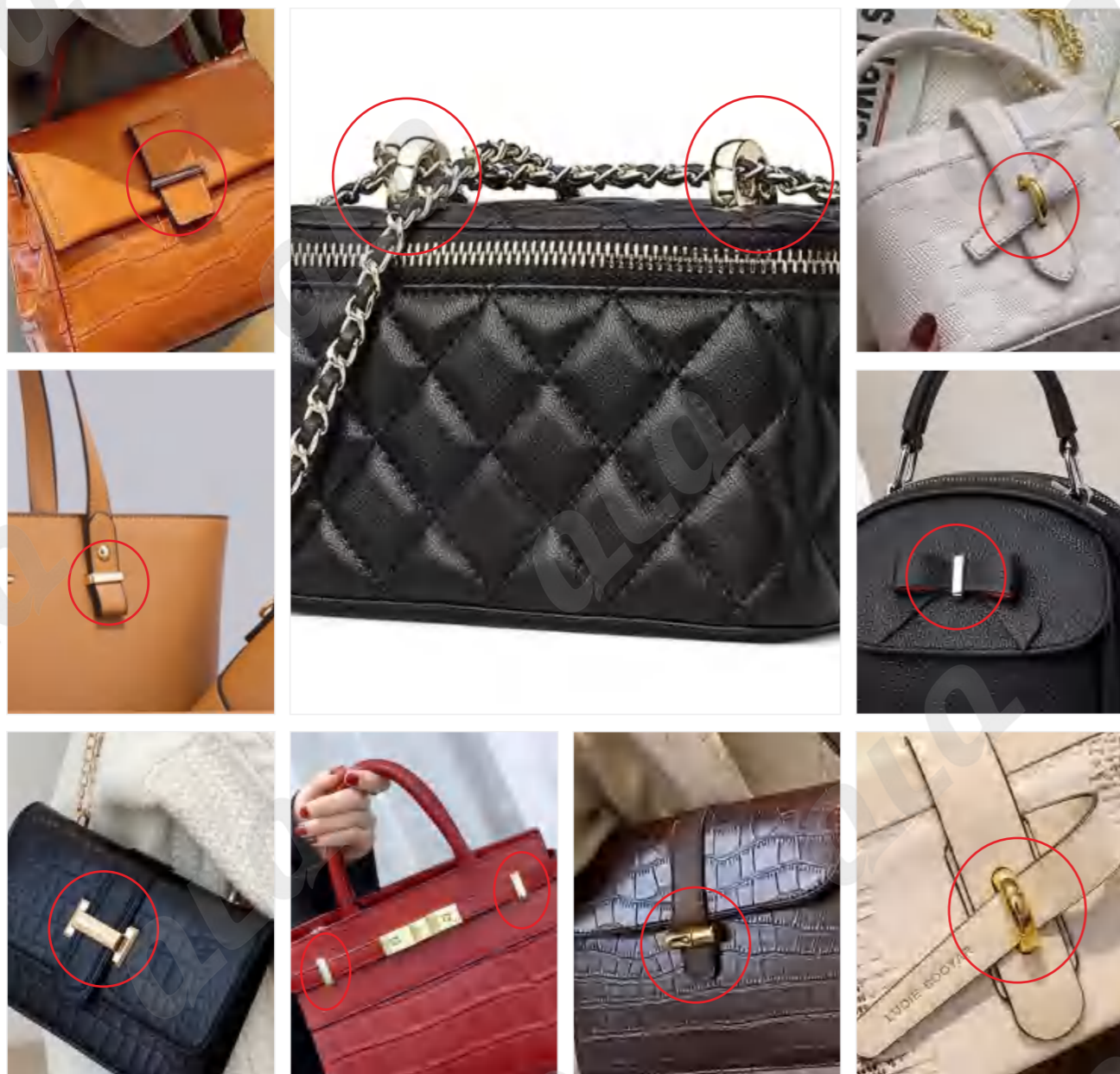
BH-1 110mm	BH-2 90mm	BH-3 95x62mm	BH-4 95x88mm	BH-5 100mm
BH-6 100x70mm	BH-7 110x70mm	BH-8 112x83mm	BH-9 117x87mm	BH-10 117x102mm
BH-11 118x74mm	BH-12 118x86mm	BH-13 120x70mm	BH-14 125x114mm	BH-15 126x70mm
BH-16 128.5x97mm	BH-17 130.7x78.15mm	BH-18 95x88mm	BH-19 135x137mm	BH-20 138x100mm
BH-21 139x88mm	BH-22 140mm	BH-23 150x110mm	BH-24 151x83x4.0mm	BH-25 159x45mm
BH-26 180x65mm	BH-27 200x70mm	BH-28 205x68mm	BH-29 230x65mm	BH-30 230x72mm



EC-1 Shiny Silver 10x9.7mm-白镍	EC-2 Shiny Gun 14x12mm-枪色	EC-3 Light Gold 14x13mm-浅金	EC-4 Shiny Silver 15.5x8mm-白镍	EC-5 Shiny Gun 16.2x8.5mm-枪色
EC-6 Light Gold 16.5x9.8mm-浅金	EC-7 Light Gold 17.2x16mm-浅金	EC-8 Light Gold 17x13mm-浅金	EC-9 Light Gold 18.3x10.9mm-浅金	EC-10 Light Rose Gold 19x12mm-浅玫瑰金
EC-11 Light Gold 20.2x10.6mm-浅金	EC-12 Light Gold 20x10mm-浅金	EC-13 Light Gold 21.3x17.2mm-浅金	EC-14 Light Gold 21x10mm-浅金	EC-15 Light Gold 21x12.8mm-浅金
EC-16 Light Gold 21x12mm-浅金	EC-17 Shiny Gun 22x20mm-枪色	EC-18 Light Gold 23x15mm-浅金	EC-19 Light Gold 23x16mm-浅金	EC-20 Light Gold 24.2x17mm-浅金
EC-21 Light Gold 33x30mm-浅金	EC-22 Light Gold 38x23mm-浅金	EC-23 Light Gold 18x8mm-浅金	EC-24 Light Gold 42.2x7mm-浅金	EC-25 Light Gold 47x9.9mm-浅金
EC-26 Red Bronze 10x7mm-红古铜	EC-27 Shiny Gun 34x20mm-枪色	EC-28 Shiny Silver 26x12mm-白镍	EC-29 Rainbow 34x20mm-彩虹色	EC-30 Rainbow 35x9mm-彩虹色

15 拱桥

ARCH BRIDGE



ALQ QUALITY | LOWER COST | QUICKLY

16 金属&塑料梯扣

METAL & PLASTIC LADDER BUCKLE



MLB-1 MLB-2 PLB-1 PLB-2 PLB-3



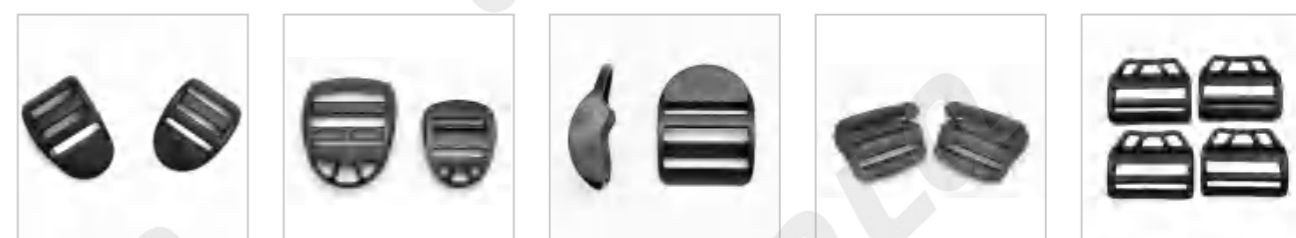
PLB-4 PLB-5 PLB-6 PLB-7 PLB-8



PLB-9 PLB-10 PLB-11 PLB-12 PLB-13



PLB-14 PLB-15 PLB-16 PLB-17 PLB-18



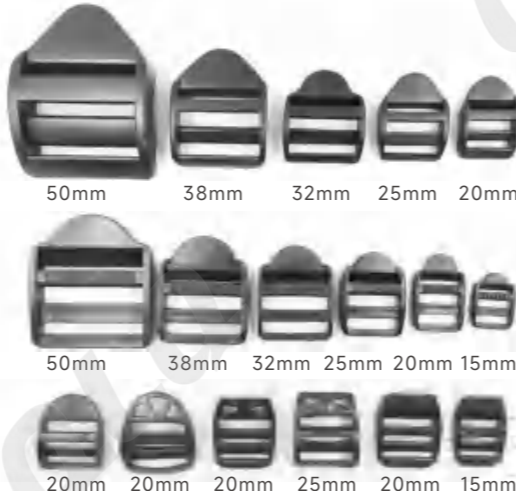
PLB-19 PLB-20 PLB-21 PLB-22 PLB-23



PLB-24 PLB-25 PLB-26 PLB-27 PLB-28

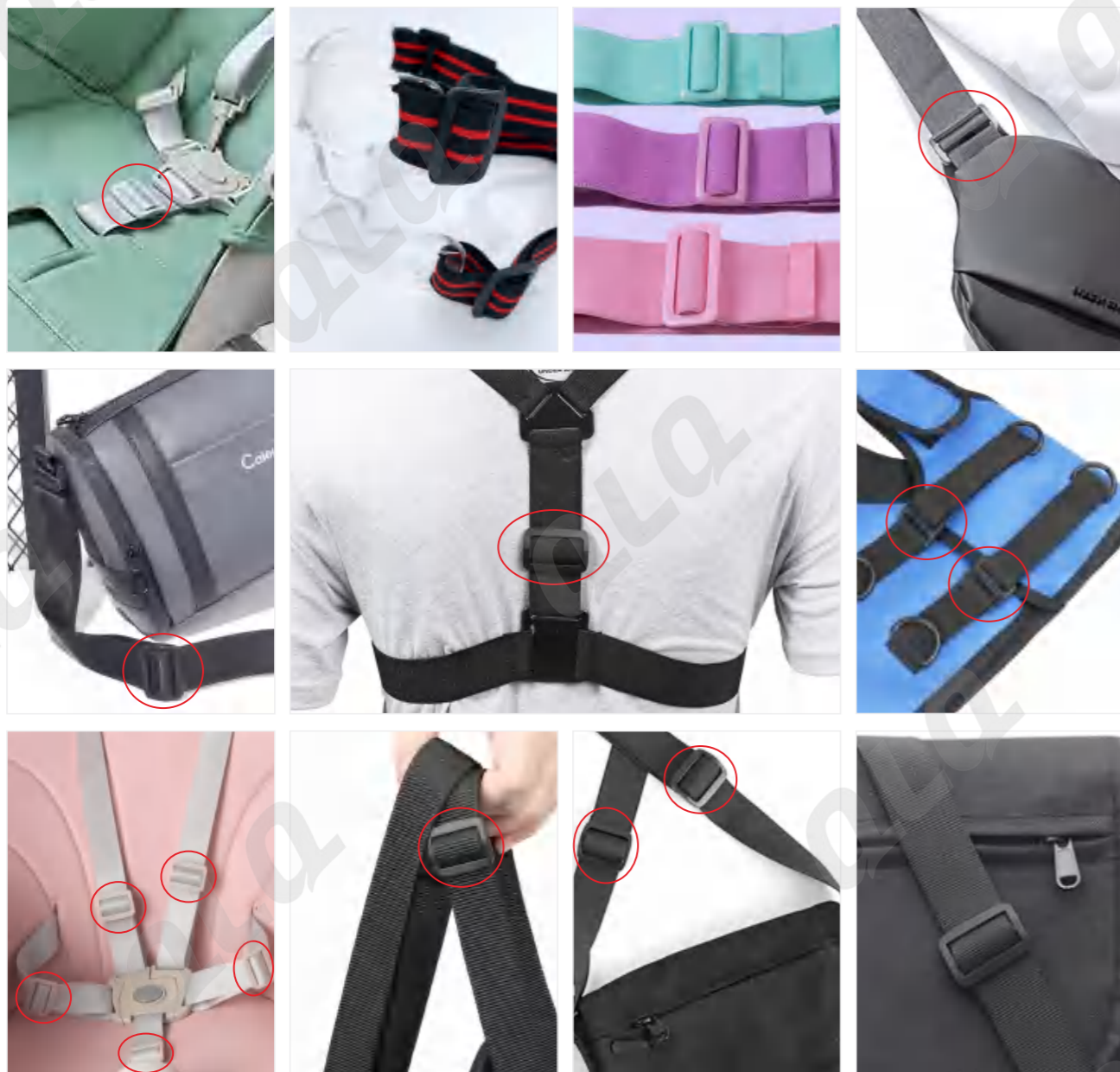


货描 Description	内径宽(mm) Inner Diameter Width	外径宽度(mm) Outer Diameter Width
6分梯扣 20mm Plastic Ladder Buckle	20	26
1寸梯扣 25.4mm Plastic Ladder Buckle	25.4	30
1寸加厚梯扣 25.4mm Plastic Ladder Buckle(thickened)	25.4	31
1寸2梯扣 32mm Plastic Ladder Buckle	32	38
1寸半梯扣 38mm Plastic Ladder Buckle	38	44
2寸梯扣 51mm Plastic Ladder Buckle	51	59



17 金属&塑料日字扣

METAL & PLASTIC TRI-GLIDE BUCKLE



货描 Description	内径宽(mm) Inner Diameter Width
日字扣 Plastic Tri-glide Buckle	17
日字扣 Plastic Tri-glide Buckle	21
日字扣 Plastic Tri-glide Buckle	26
日字扣 Plastic Tri-glide Buckle	32
日字扣 Plastic Tri-glide Buckle	38



Standard Tri-glide Buckle
标准日字扣

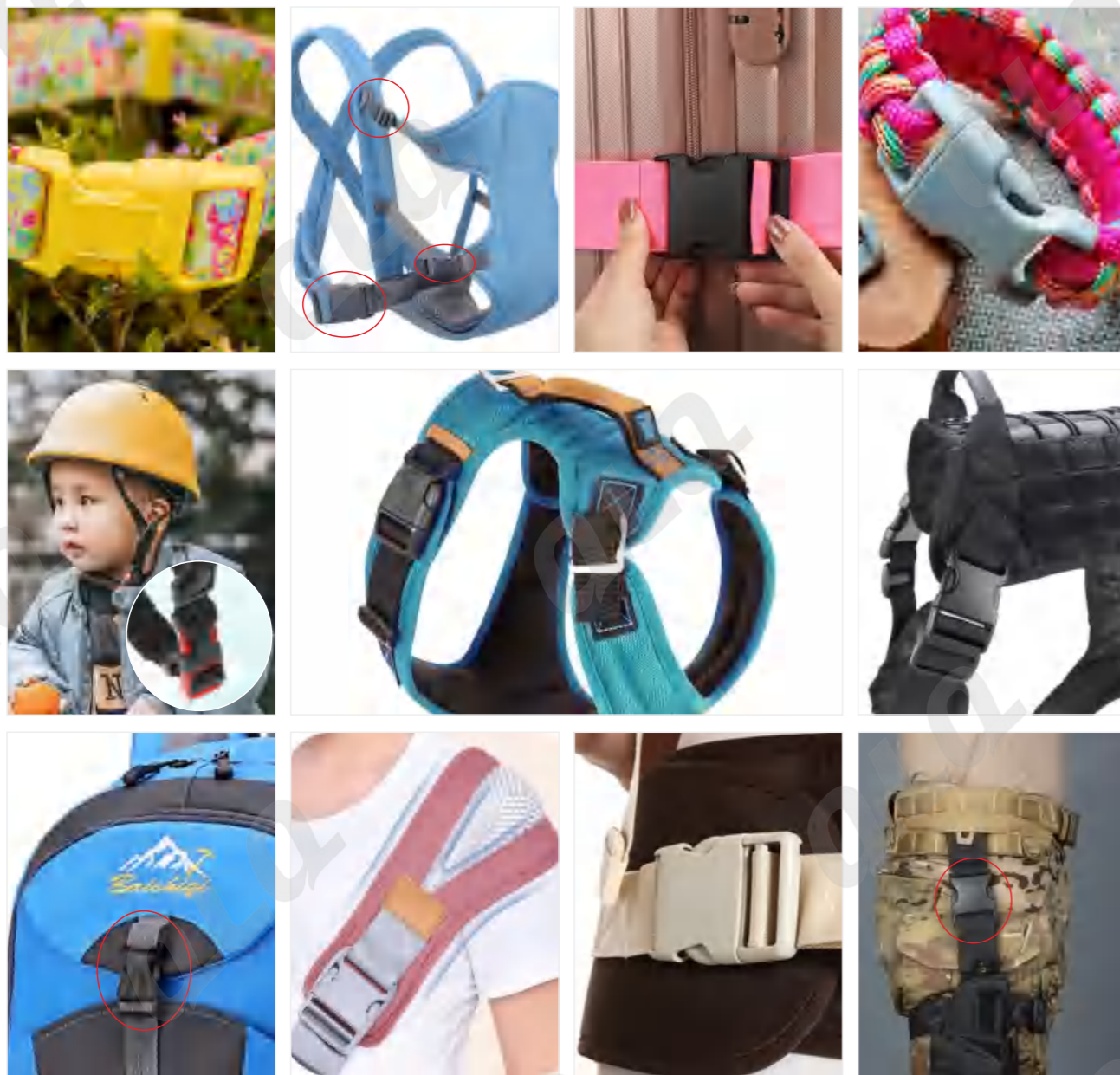
Smooth Surface Tri-glide Buckle with Teeth
光面有齿日字扣

Thin Strip Tri-glide Buckle
细条日字扣

Skidproof Tri-glide Buckle
防滑日字扣

18 金属&塑料插扣

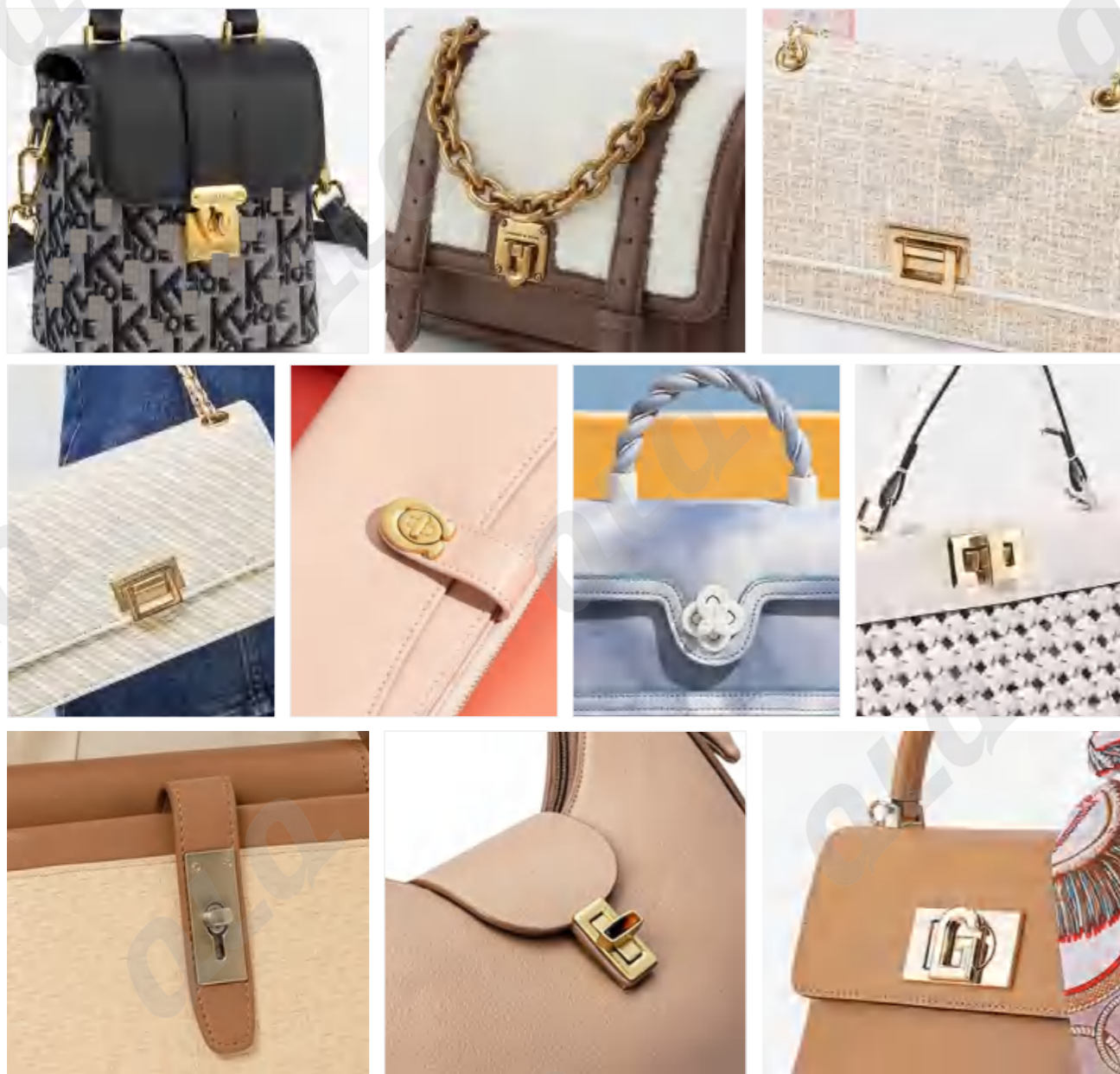
METAL & PLASTIC BUCKLE



ALQ QUALITY | LOWER COST | QUICKLY

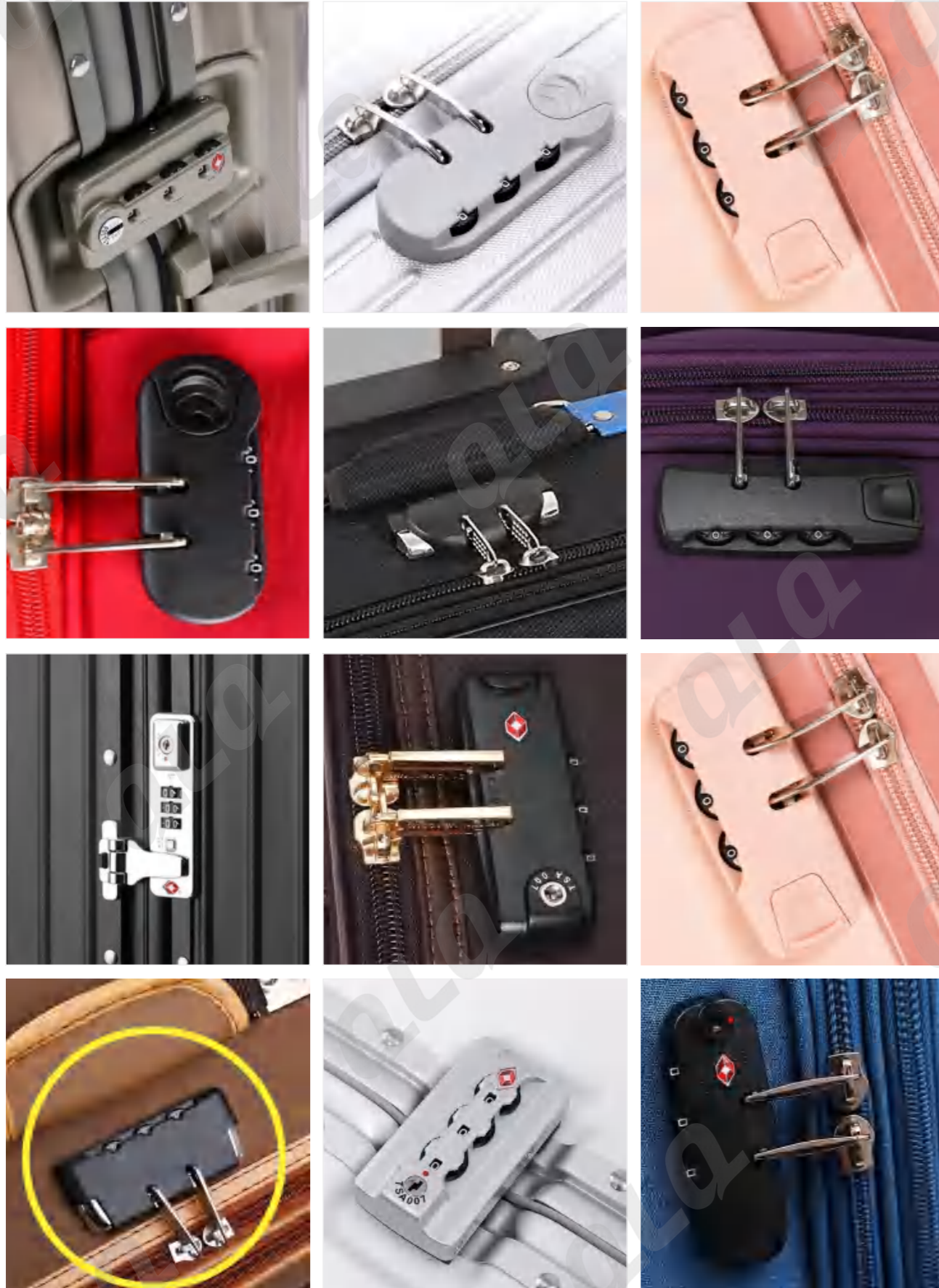
19 锁扣

BAG LOCK

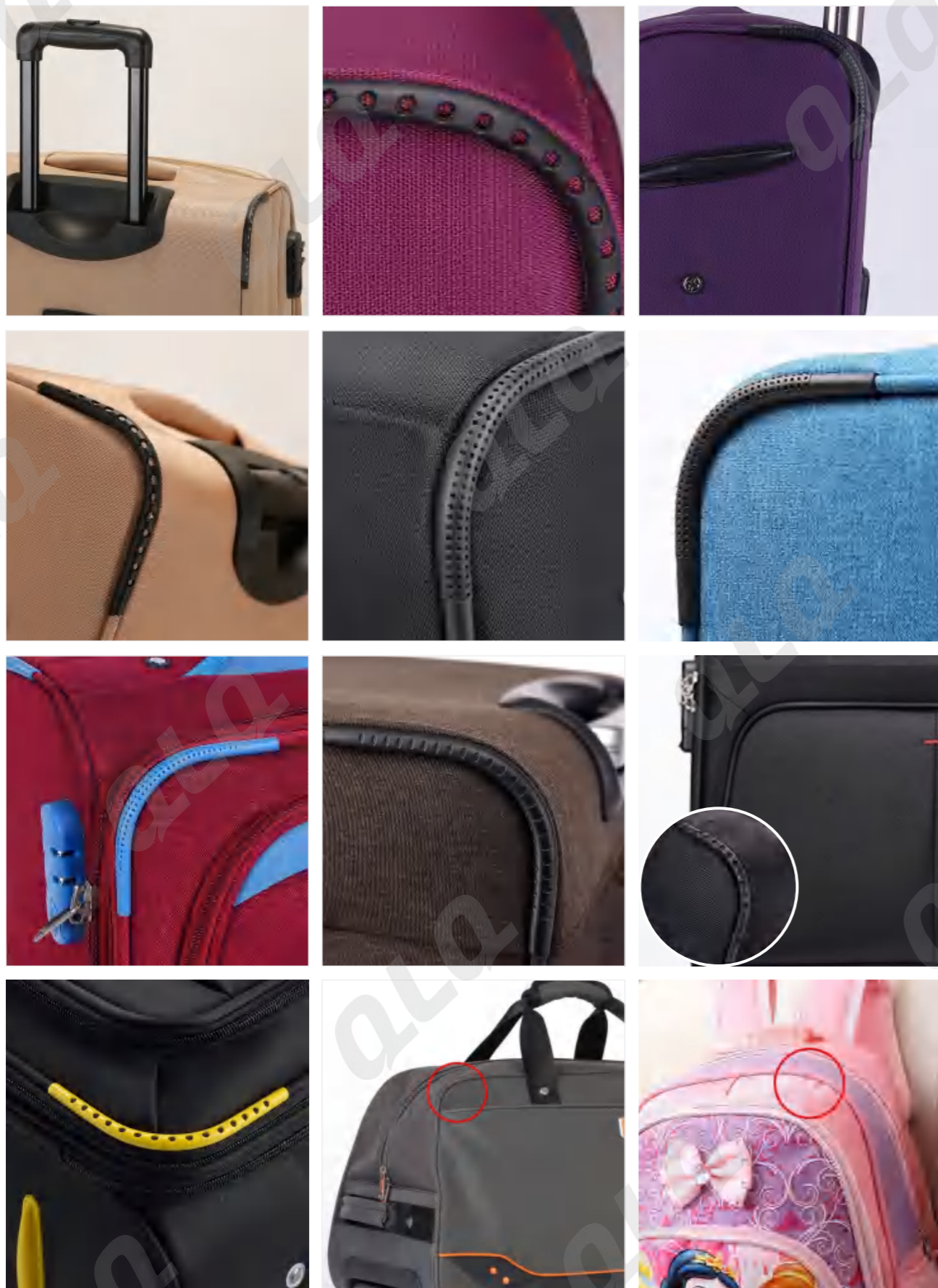


20 拉杆箱锁扣

TROLLEY CASE LOCK







CPS-1



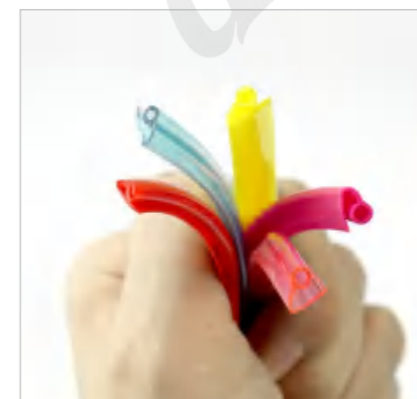
CPS-2



CPS-3



CPS-4



CPS-5



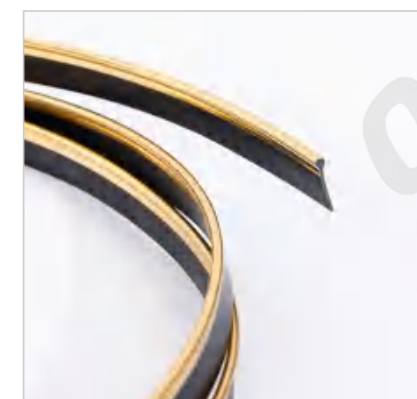
CPS-6



CPS-7



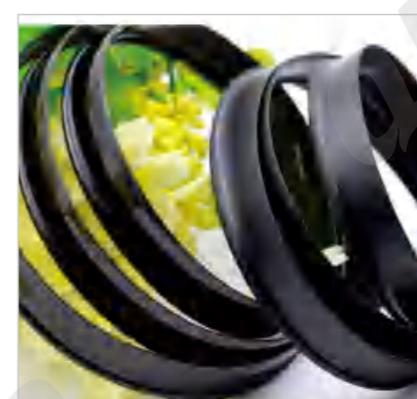
CPS-8



CPS-9



CPS-10



CPS-11



CPS-12

23 拉杆

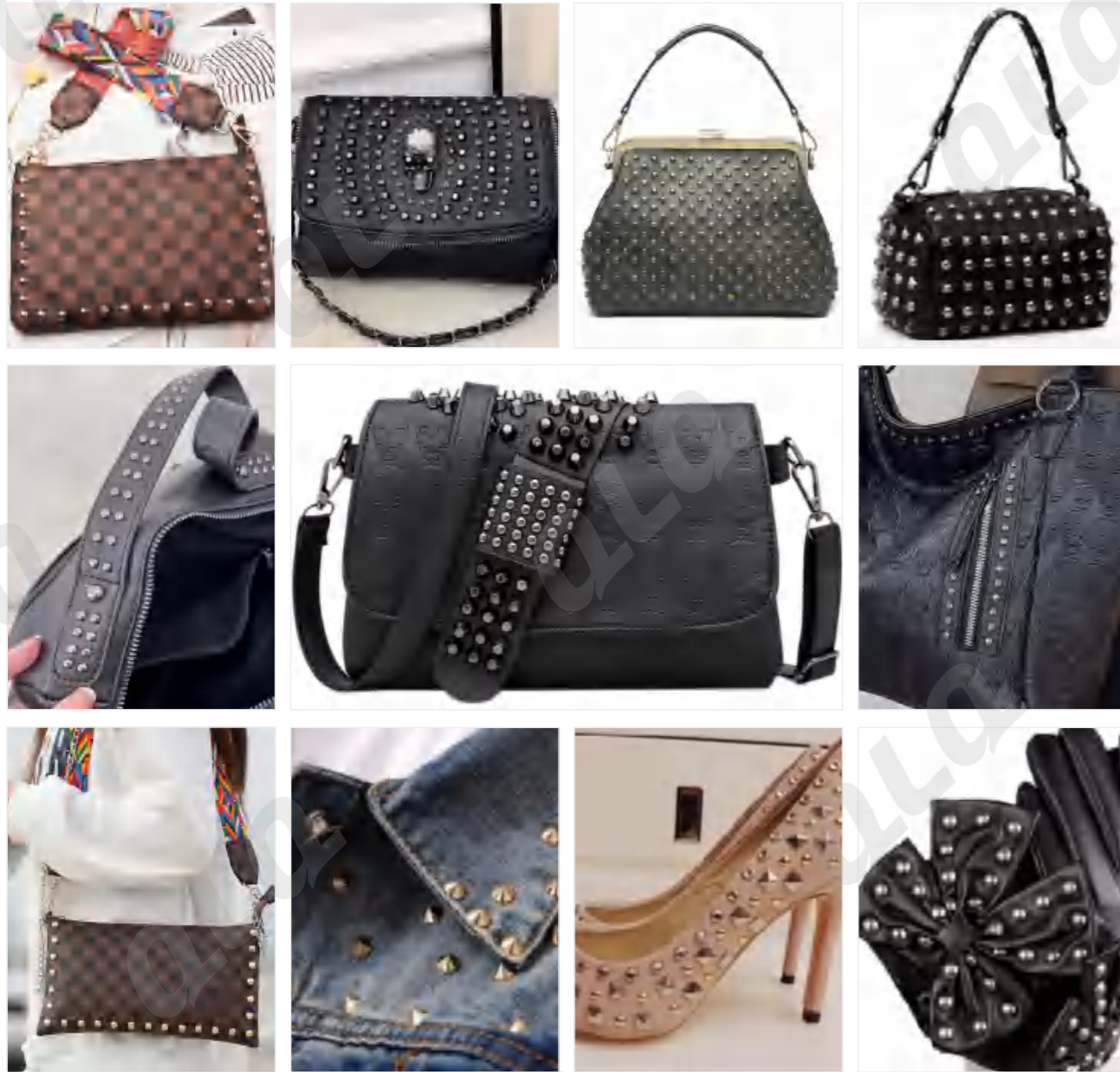
TROLLEY HANDLE



ALQ
 QUALITY | LOWER COST | QUICKLY

24 钉系列

NAIL SERIES



Various sizes available

Tack 平头钉	Mushroom Nail 蘑菇钉	Round Tip Nail 圆尖钉	Bucket Nail 水桶钉
Hexagon Flat Nail 六角平钉	Square Flat Nail 四方顺平钉	Yurt Nail 蒙古包钉	Square Point Nail 四方尖钉
Pyramid Rivet Stud 三角尖钉	Triangular Flat Nail 三角平钉	Heart Shape Nail 心形撞钉	Star Shape Rivet 五角星尖钉

Product color display

Shiny Silver 白叻	Anti-Brass 古铜	Shiny Gun 枪黑	Brush Bronze 古扫
Gold 金	Light Gold 浅金	Anti-Gold 古金	Rose Gold 玫瑰金
Painting Color 烤漆色	Painting Color 烤漆色	Painting Color 烤漆色	Custom Color 颜色定制

Support color customization

Mushroom Nail 蘑菇钉	Bucket Nail 水桶钉	Square Point Nail 四方尖钉	Tack 平头钉
Hexagon Flat Nail 六角平钉	Pyramid Rivet Stud 三角尖钉	Foot Nail 脚钉	Heart Nail 心形撞钉
NS-1	NS-2	NS-3	NS-4
NS-5	NS-6	NS-7	NS-8

			+	= Single Cap Rivet (One Set)
				= Double Cap Rivet (One Set)

Plating/
Hanging Plating/
Barrel Plating

Painting

Logo engraving

Customized according to customer's needs/drawings