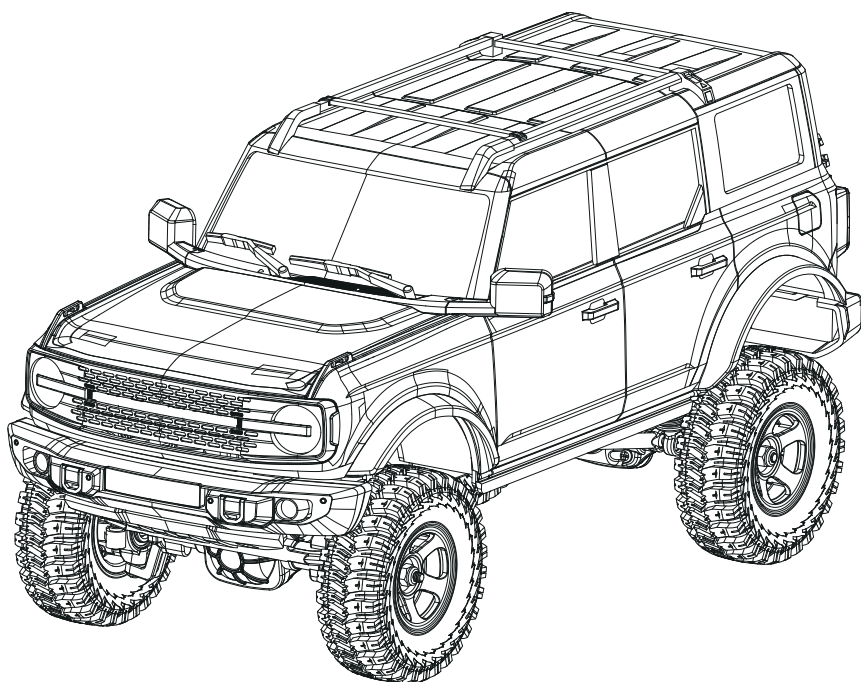


EAZ RC

1:18 BRONX



Instruction Manual
Bedienungsanleitung
Manuel d'utilisation
操作手册

Introduction

The 1:18 Bronx is the first new vehicle for 2022 from the EAZYRC stable of low cost– user friendly, high quality RTR crawlers.

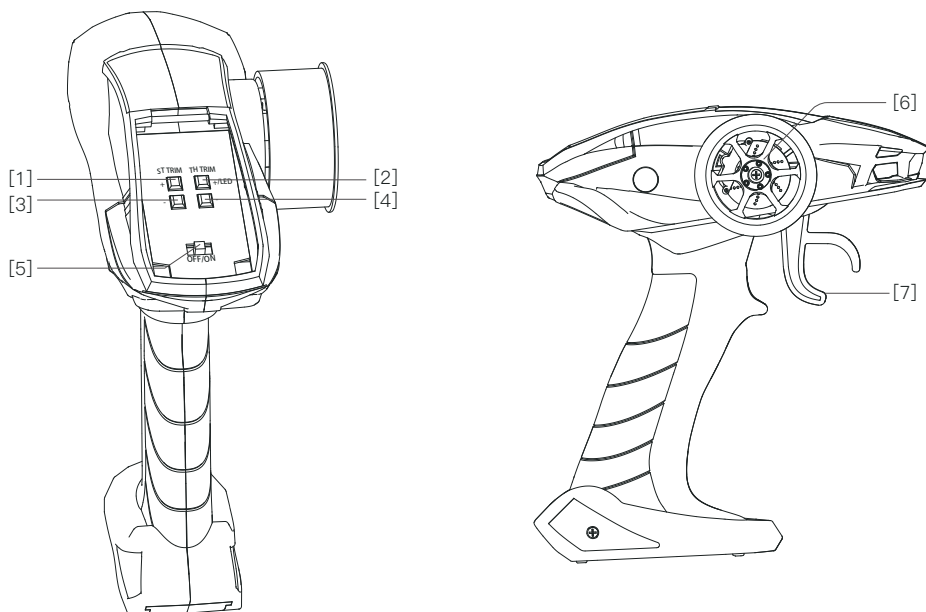
Like all of the other EAZYRC vehicles, the Bronx is supplied in an RTR format, complete with a very simple to use 2 channel RC controller, and is available in two colour options (bright yellow and silver–gray) providing users a choice of two eye catching finishes.

The main bodyshell of the 1:18 Bronx is comprised of a finely detailed injection moulded main body, complete with a host of impressive scale details such as door handles, mirrors, wipers, and much, much more. Power for the very capable drivetrain is supplied by the included 2S battery which can be found along with the 2 channel Receiver, tucked away under the opening scale hood. Additional scale details include a functional spare tire, detailed vehicle cabin, and a selection of license plate decals for different regions

Combined with this is our proven full–time 4–wheel drive transmission with a Final Drive Ratio of 104:1, a high torque 050 size motor, nylon driveshaft and the very same multi–link suspension design inherited from the other vehicles in the EAZYRC range, making it more than capable of handling even the wettest, roughest and dirtiest terrain with confidence.

Any location can be the venue for your next Bronx adventure –whether it’s a backyard adventure at the weekend, a spot of “Mud Bogging” after work, climbing the laundry pile in your bedroom, or even just an improvised office Crawl at lunchtime–the EAZYRC 1:18 Bronx can do it all!

Transmitter Introduction



[1] Steering Trim+ (ST TRIM+) Mode A	[2] Throttle trim + (TH TRIM +) mode A / light control switch 1 mode B
[3] Steering Trim– (ST TRIM–) Mode A	[4] Throttle trim – (TH TRIM –) mode A / light control switch 2 mode B
[5] Power Switch	[6] Steering wheel
[7] Throttle trigger	

ST TRIM	When the steering center is not centered	Make sure that the mode function toggle switch is in mode A, press ST TRIM+ or – button to fine tune the steering center. Every click of the button will ring. When the maximum and minimum values are reached, a long sound will appear. When the median value is reached, it will ring one time.
TH TRIM	When the throttle is not centered	Make sure that the mode function toggle switch is in mode A, press TH TRIM + / – button to fine tune the throttle center. Every click of the button will ring. When reaching the maximum and minimum value, the button will ring, when reaching the median value, the button ring one time.

Transmitter: frequency alert	When the transmitter does not match the receiver, the indicator light of the transmitter keeps flashing
Transmitter: no frequency matching + low power reminder 4.5V	The indicator light of the transmitter flashes slowly and makes a sound
Transmitter: low power reminder 4.5V	The indicator light of the transmitter flashes slowly
Car: frequency alert	The headlights keep flashing
Car: low power alarm 6.3–6.4v	All lights keep flashing, steering and throttle are not controlled
Car: reminders to prevent forgetting	If the vehicle does not receive any signal, it will flash back and forth after 10 minutes and enter sleep mode after 2 minutes

Transmitter Battery Installation

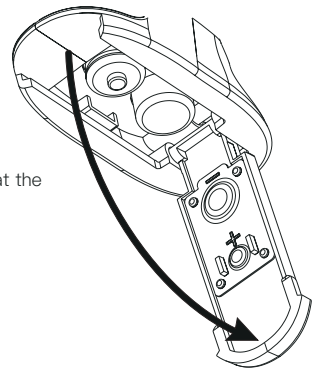
Battery Type: AAA

Battery Installation:

1. Open the battery compartment cover.
2. Insert 4 fully-charged AAA batteries into the compartment. Make sure that the battery makes good contact with the battery compartment's contacts.
3. Replace battery compartment cover.

Low battery alarm: When the battery is lower than 4.2V, the LED on the panel will flash slowly.

Note: When installing the batteries, be careful to handle the positive and negative poles. (As shown in the picture on the right)



Warnings

- This vehicle is not intended for those under 14 years of age without proper adult supervision. It is not a toy! Failure to operate or maintain this vehicle in a safe manner can result in bodily harm.
- Replace damaged components with original factory-parts. Pay special attention to the polarity of all vehicle wiring.
- Only use approved 2 cell lithium polymer batteries. Do not over-charge or over dis-charge the battery as doing so may cause the battery to become a fire hazard. If the battery should become hot during charging, discontinue charging immediately and disconnect the battery from the charger. Never leave the battery unattended while charging. If you are unsure of how to charge this battery, please seek the advice of experienced RC users. Never let children charge the battery without adult supervision.
- The motor will become hot during use. Allow 10–15 minutes between runs for the vehicle to cool down. Doing so will prolong the life of your vehicle.
- Use common sense when selecting the environment to operate your vehicle. Do not operate near power cables, cellular/radio towers, deep water or unstable terrain. The operator is solely responsible for their actions.
- The product is composed of precision electrical components. It is critical to keep the product away from moisture and other contaminants. If exposed to a humid environment, make sure the electronics are fully dried prior to using them again.
- Always check the radio range of the vehicle prior to operation in order to prevent radio loss or interference.
- Operate this product within your ability. If the vehicle is dangerous to retrieve, it's never worth the risk.
- Always turn on the transmitter before connecting the battery on the model. When turning off the model, always disconnect the battery first, and then turn off the model, always disconnect the battery first, and then turn off the transmitter. If this order is reversed, the model may become uncontrollable and cause serious damage.
- Never allow transmitter batteries to run low as it may cause loss of vehicle control.
- Plastics on the vehicle are susceptible to damage or deformation due to extreme heat and cold climate. Do not store the model near any source of heat such as oven or heater. Store the model indoors, in a climate-controlled, room temperature environment.
- Never shorten the receiver antenna; this may affect the transmitting range of the radio system.
- Only use specified battery (X4 AAA batteries).
- Do not open, disassemble, or attempt to repair the battery.
- Do not crush/puncture the battery, or short the external contacts.
- Do not expose to excessive heat or liquids.
- Do not drop the battery or expose to strong shocks or vibrations.
- Always store the battery in a cool, dry place.
- Do not use the battery if damaged.
- The Battery must be disconnected the receiver when charging.

Power On

Follow the steps below to turn on the transmitter:

1. Check to make sure that that battery is fully charged and installed correctly.
2. Toggle the switch to the [ON] position. When active the LED will be lit.
3. Connect the receiver to power.
 - For safety always power on the transmitter before the receiver.



Note

- Operate with caution in order to avoid damage or injury.
- Make sure that the throttle is at its lowest position and the switches are set to their up position.

Instructions

After setting up, follow the instructions below to operate the system.

1. Automatic code matching (the transmitter and receiver have been successfully coded before leaving the factory.)

If you need to replace another transmitter or receiver, please follow the following steps to code:

1. When the transmitter power is on and the code matching mode is on, the light keeps flashing;
2. The power supply of the receiving board is turned on, and the front lights keep flashing to enter the code matching mode;
3. When the code matching is successful, all the transmitter lights are on and all the lights on the car are off;

Note: when code matching, please operate the transmitter to enter the code matching state first, and then operate the receiver to enter the code matching state.

2、POWER OFF

Follow the steps below to turn off the system:

1. Disconnect the receiver power.
2. Toggle the transmitter's power switch to the off position.



Note

Make sure to disconnect the receiver power before turning off the transmitter. Failure to do so may lead to damage or serious injury.

Transmitter specification

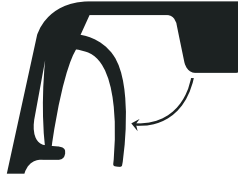
Product Model	HT-TX02
Adaptive model	Car
RF	2.4GHz
Transmitting power	<20dBm
Wireless protocol	ANT
Distance	>30m(ground)
Channel Resolution	256 Grade
Battery	6V DC 1.5AAA*4
Charging Interface	NO
Life time	According to battery type
Low Voltage Warning	<4.45V
Antenna Type	Built-in single antenna
Data interface	NO
Temperature Range	-10°C ~ +60°C
Humidity Range	20-95%
Online Update	NO
Color	Black
Size	296mm *113mm *129mm
Weight	151g
Certification	CE, FCC ID: 2AUBX-HT-TX02

Throttle stick position

Neutral point



Top point of forward direction



Top point of backward direction



Operating the vehicle

Step 1: turn on the transmitter, the headlamp of the transmitter will flash and enter the frequency matching mode.

Step 2: turn on the receiver switch, the headlight will flash and enter the frequency matching mode.

Step 3: when the transmitter and receiver are successful in frequency up, the front lights of the transmitter will be on for a long time, and the front lights of the vehicle will be off.

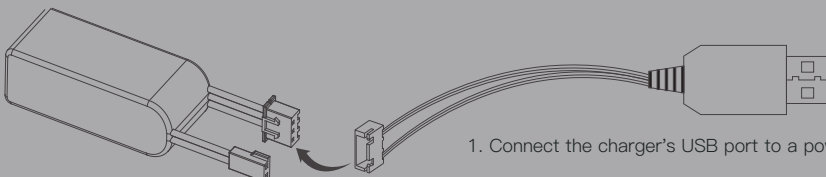
Setting the Gear Mesh

The gear mesh is the clearance between the pinion and spur gears in your vehicle. If the motor or gearing components are replaced, check that the gears are not meshing too tightly as this may cause premature wear.



Charging the Battery

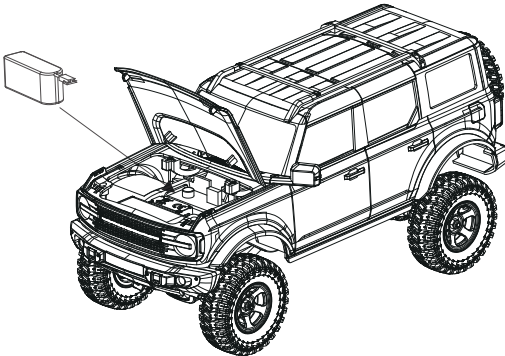
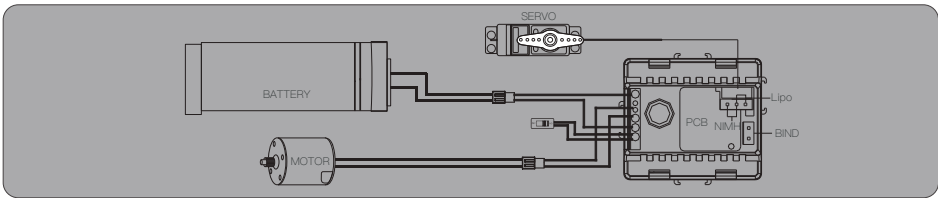
1. Connect the charger to a USB port then connect the battery to the charger.
2. When charging, the Green LED is flash, when charged, the Green LED is stable.
3. Do not let the battery charge unattended!
4. If the battery or charger is hot, disconnect the battery and charger immediately as this may be caused by an internal short-circuit.



2. Connect the battery to the charger.

1. Connect the charger's USB port to a power source.

- Always charge LiPo batteries on non-flammable, heat-resistant surfaces.
- Always use a LiPo-safe bag or container while charging. Do not allow LiPo cells to overheat at any time. Cells which reach greater than 140 Fahrenheit(60°C) will usually become damaged and will catch fire.
- Do not charge the LiPo pack while it is still in the model. Never charge or store battery packs in a vehicle.
- Do not discharge LiPo; doing so will damage the battery.
- Do not expose LiPo cell to water or moisture at any time.
- Do not store battery near open flame or heater.
- Do not assemble LiPo cells or pre-assembled packs together with other LiPo cells or packs.
- Always store LiPo battery in a secure location away from children.
- Always remove the LiPo battery if model is involved in any kind of crash.
- Carefully inspect the battery and connectors for even the smallest damage.
- CAUTION: Cells may become hot after usage. Allow the pack to cool to room temperature prior to recharging.
- Do not allow the electrolyte to get into eyes or on skin. Wash affected areas immediately if they if they come into contact with electrolyte. Do not alter or modify connectors or wires of a LiPo battery pack.
- Always inspect the condition of the battery before charging and operating.
- Do not short circuit the LiPo battery.
- Do not have contact with a leaky/damaged battery directly.
- Do not charge battery out of recommended temperature range(0°C 45°C).



NOTE

- 1.If it is not in use for a long time, unplug and take off the battery to prevent battery leakage.
- 2.Do not open, disassemble, or attempt to repair the battery.
- 3.Please disconnect the battery from the receiver before charging.

Spare parts list

E1089	11817 Hood YELLOW	E1067	SCREW SET
E1090	11817 Hood GRAY	E1023	5 wire 9g SERVO
E1091	11817 Front and Rear Light Cup Set	E1080	11817 Window
E1092	11817 Hood Mount Set	E1036	1:18 Rear wheel shaft
E1093	11817 Rearview Mirror And Wiper	E1037	1:18 Wheel Hex
E1094	11817 Bumper And Side Panel	E1038	1:18 Rear axle plastic parts
E1095	11817 Lens	E1040	1:18 SHOCK PLASTIC PARTS
E1096	11817 Body SHELL YELLOW	E1106	11817 Connecting Rod
E1097	11817 Body SHELL GRAY	E1042	1:18 M4 ALLY BALL
E1098	11817 CHASSIS	E1043	1:18 BALL HEAD
E1099	11817 HANDLE	E1044	1:18 C HUB PARTS
E1011	Teraz Tire 19.2 x 13.5 x 56	E1045	1:18 FRONT/REAR AXLE parts
E1100	11817 Wheels plastic parts	E1046	1:18 SERVO HORN
E1101	Transmitter(SportsCar style)/ESC/RX V3 Combo	E1107	11817 MIRROR LENS
E1014	LIPO Battery 2S LIPO 380mAh	E1048	1:18 FRONT OUTDRIVE SHAFT
E1102	11817 Light set	E1049	1:18 Gear Box Plastic Parts
E1016	USB Charger	E1108	11817 Spare Tire Bracket
E1103	ESC/RX V3	E1109	11817 SEAT
E1104	Transmitter(SportsCar style)	E1110	11817 Dash board SET
E1019	050 Motor set	E1111	11817 Rooftop Rack
E1105	11817 Gear set		
E1021	Transmission Shaft full set		

CE Warning

The antenna(s) used for this transmitter must be installed to provide a separation distance of at least 20 cm from all persons and must not be co-located or operating in conjunction with any other transmitter. End-users and installers must be provided with antenna installation instructions and transmitter operating conditions for satisfying RF exposure compliance.

Appendix 1 FCC Statement

FCC ID: 2AUBX-HT-TX02

This equipment has been tested and found to comply with the limits for a Class B digital device pursuant to part 15 of the FCC rules. These limits are designed to provide reasonable protection against harmful interference in a residential installation. This equipment generates, uses and can radiate radio frequency energy and, if not installed and used in accordance with the instructions, may cause harmful interference to radio communications. However, there is no guarantee that interference will not occur in a particular installation. If this equipment does cause harmful interference to radio or television reception, which can be determined by turning the equipment off and on, the user is encouraged to try to correct the interference by one or more of the following measures:

- Reorient or relocate the receiving antenna.
- Increase the separation between the equipment and receiver.
- Connect the equipment into an outlet on a circuit different from that to which the receiver is connected.
- Consult the dealer or an experienced radio/TV technician for help.

To assure continued compliance, any changes or modifications not expressly approved by the party responsible for compliance could void the user's authority to operate this equipment.

This equipment complies with Part 15 of the FCC Rules. Operation is subject to the following two conditions:

- (1) This device may not cause harmful interference.
- (2) This device must accept any interference received, including interference that may cause undesired operation.

Caution!

The manufacturer is not responsible for any radio or TV interference caused by unauthorized modifications to this equipment. Such modifications could void the user authority to operate the equipment.

1. The antenna(s) used for this transmitter must be installed to provide a separation distance of at least 20 cm from all persons and must not be co-located or operating in conjunction with any other transmitter. End-users and installers must be provided with antenna installation instructions and transmitter operating conditions for satisfying RF exposure compliance.
2. Move all your channels to the desired position.
3. Select [All channels] and then [Yes] in the confirmation box.

Declaration of Conformity (DoC)



declare under our responsibility that the product:

Type of Equipment: Patriot Driving System & 2.4GHz Control System

Brand Name: EAZYRC

Equipment Model: 11817

to which this declaration relates is in conformity with the essential requirements and other relevant requirements of the RED Directive 2014/53/EU, EMC Directive 2014/30/EU, FCC Identifier 2AUBX-TX01Z and EU RoHS Directive 2011/65/EU.

The product is in conformity with following standards and/or other normative documents:

ETSI EN 301 489-1 V2.2.3 (2019)	EN 61000-3-3:2013
ETSI EN 301 489-17 V3.2.4 (2020-09)	IEC/EN62368-1
EN 55032:2015	EN 62368-1:2014+A11:2017
EN 55035:2017	EN 62479:2010
EN 61000-3-2:2014	EN 300 328 V2.2.2:2019-07

产品介绍

1: 18 掘金风暴

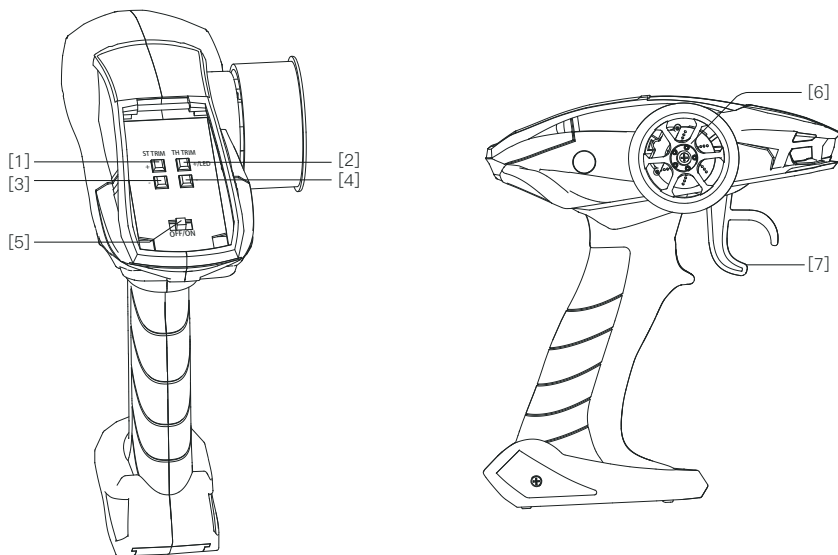
2022年EAZYRC系列全新新车1/18 掘金风暴，提供两种颜色选择，亮黄色和银灰色。无需经验零基础入门，RTR配置可随时运行。

掘金风暴外壳是注塑模型，精细的车身，带有门把手、后视镜、雨刮等。引擎盖可以打开安装电池，仿真驾驶舱可供另外安放人仔。还有一个全比例备胎，以及个性化地区可选车牌贴纸。

任何地点都可以成为掘金风暴冒险的场地。工作之余，可以在桌上爬行。凌乱的房间也许是理想的障碍赛场。在室外，防水电子设备，可以在小溪、岩石、树枝、泥地纵情驰骋。

掘金风暴底盘采用全时4轮驱动设计，多连杆悬吊与止推杆设计让无惧任何路线的挑战。超高扭力的电机与尼龙传动轴让你自信的越野和攀爬。

发射机概览



[1]	转向微调+ (ST TRIM+) A模式	[2]	油门微调+ (TH TRIM+) A模式/灯控切换1 B模式
[3]	转向微调- (ST TRIM-) A模式	[4]	油门微调- (TH TRIM-) A模式/灯控切换2 B模式
[5]	电源开关	[6]	转向方向盘
[7]	油门扣机		

ST TRIM	当转向中位不正中	确保模式功能拨动开关在A模式下, 按下ST TRIM+或-按键可进行转向中位微调。每单击按键都会响一声。当到达最大值及最小值时, 会出现一声长鸣喇叭。当到达中位值时会发出响声。
TH TRIM	当油门中位不正中	确保模式功能拨动开关在A模式下, 按下TH TRIM+或-按键可进行油门中位微调。每单击按键都会响一声。当到达最大值及最小值时, 会出现一声长鸣喇叭, 当到达中位值时会发出响声。

发射器: 对频提醒	当发射器没有匹配接收器时, 发射器的指示灯不停快闪亮
发射器: 没有对频+低电提醒4.5V	发射器的指示灯慢闪, 及发出响声
发射器: 低电提醒4.5V	发射器的指示灯慢闪
车:对频提醒	车前灯不断闪亮
车:低电警报6.3-6.4V	所有灯不短闪亮, 转向及油门不受控
车:遗忘提醒	车辆未收到任何信号, 10分钟后会前后跳闪灯, 2分钟后进入休眠

发射机电池安装

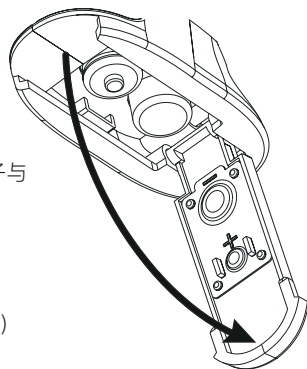
电池类型使用: AAA电池

请按照以下步骤安装发射机电池:

1. 打开电池仓盖。
2. 将4颗电量充足的AAA电池装入电池仓内, 确保电池上的金属端子与电池仓内的金属端子接触。
3. 盖好电池仓盖。

低电量报警: 当电量低于4.2v时, 面板上的LED慢闪报警提示。

注: 安装电池时, 请留意电池正负极, 避免安装错误。(如右图所示)



警告

- 本产品非玩具级别，不适合14岁以下的儿童操作使用。未成年人应在有经验的成年人陪同下操作使用。
- 请使用原厂部件更换损坏的部件。特别注意所有车辆接线的正负极。
- 只能使用2节锂聚合物电池。不要过度充电或过度放电，以免电池泄露或损坏产生火灾隐患。如果电池在充电过程中温度过热，请立即停止充电，并将电池与充电器断开。请勿在无人看管的情况下给电池充电。
- 如果您不确定如何安全地进行充电，请向经验丰富的遥控模型产品玩家寻求建议。不要让孩子在没有成人监督的情况下给电池充电。
- 由于电机在使用过程中会发热，两次操作中要留出大约10-15分钟的时间冷却电机，以延长产品的使用寿命。
- 务必选择合适的环境操作遥控模型，所选环境需远离电缆、无线电塔、深水及不稳定地形。本品操作者对其行为全权负责。的环境中，请确保将电子部件完全晾干以后再使用。
- 确保每次操作前检查车辆的无线接收范围，以防止无线信号丢失或受干扰。
- 在您的能力范围内操作此产品。在任何时候，如果车辆操作有危险，则绝对不值得冒险。
- 通电方式:务必先开遥控器再将车子通电。断电方式:务必先将车子断电再关遥控器。以上顺序如逆转，则可能引起遥控模型失控，导致人身伤害或财产损失。
- 遥控器电池低电时，不要操作模型车，以免造成失控。
- 模型产品上的塑胶件容易因极冷或极热气候出现变形或损坏的状况。所以请将模型产品存放在气候受控的室温环境中，切勿靠近任何热源，如烤箱或加热器等。
- 切勿更改接收机天线的长度，以免影响无线电系统的接收范围。
- 仅使用厂家指定的电池。
- 请勿打开、拆卸或自行维修电池。
- 请勿挤压、刺穿或接触电池的金属端子。
- 请勿将电池置于高温环境或液体中。
- 请注意防止电池跌落、碰撞或振动。
- 请将电池存放在干燥阴凉的环境中。
- 如果电池损坏，请立即停止使用。

开机操作

1. 检查系统状态，确保：
 - 电池电量充足且安装正确。
2. 将开关拨到【ON】位置，LED灯常亮。
3. 连接接收机电源。
 - 为保障模型及人员安全，使用时请先打开发射机再给接收机上电



警告

- 此时系统已启动，请谨慎操作，否则可能导致产品损坏或人员伤亡。
- 为了您的安全请将发射机开关和油门打到安全位置。

操作指引

准备操作完成后，您可以按照本章指引开始使用本产品。

1、自动对码（发射机和接收机在出厂前已对码成功。）

如需更换其他的发射机或接收机，请按照如下步骤进行对码：

- 1.发射器电源打开，对码模式，灯不停闪亮；
- 2.接收板电源打开，前车灯不停闪亮，进入对码模式；
- 3.当对码成功，发射机灯全亮，车上面的灯全部关闭；

注意：对码时请先操作发射机进入对码状态，再操作接收机进入对码状态。

2、关机

请按照以下步骤关机：

- 1.断开接收机电源。
- 2.将开关拨到[OFF]位置，使发射机关闭。



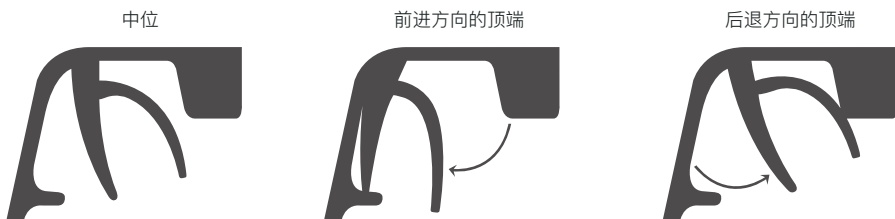
危险

- 关闭时，请务必先关闭接收机电源，再关闭发射机，否则可能导致模型损坏、人员受伤。

发射机规格

产品型号	HT-TX02
适配模型	车
无线频率	2.4GHz
发射功率	<20dBm
无线协议	ANT
遥控距离	>30m(空旷无干扰地面距离)
通道分辨率	256级
电池	6V DC 1.5AAA*4
充电接口	无
续航时间	依电池类型
低电压报警	<4.45V
天线类型	内置单天线
数据接口	无
温度范围	-10°C ~ +60°C
湿度范围	20-95%
在线更新	无
遥控器颜色	黑
外形尺寸	长: 296mm 宽: 113mm 高: 129mm
机身重量	151g
认证	CE, FCC ID: 2AUBX-HT-TX02

油门扳机位置

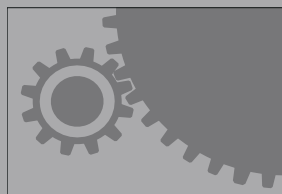


车辆操作

- 步骤1: 打开发射器, 发射器前灯会闪亮, 进入对频模式。
- 步骤2: 打开接收器开关, 车前灯会闪亮, 进入对频模式。
- 步骤3: 当发射器, 接收器对上频成功时, 发射器前灯会长亮, 车前灯会关闭。

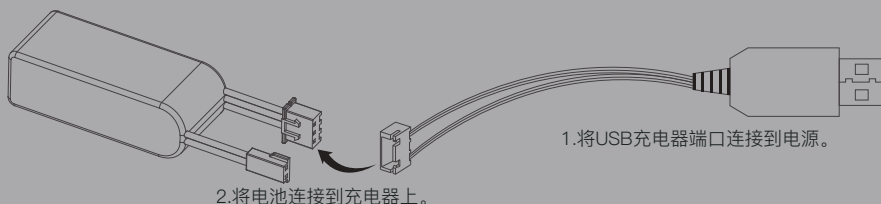
齿轮齿盒设置

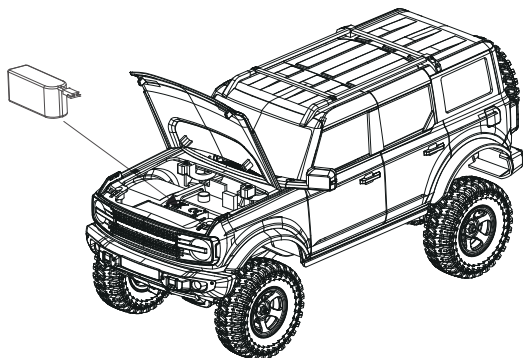
齿轮啮合是模型车内小齿轮和直齿轮之间的间隙配合。如果更换电机或齿轮传动部件, 请检查齿轮咬合是否过于紧密, 如过于紧密, 则可能导致过早出现磨损。



电池充电

1. 将充电器连接到USB端口, 然后将电池连接到充电器电源线上。
2. 充电时, LED灯状态为红色, 充电完成时, LED灯状态为绿色。
3. 请勿在无人看管的情况下充电!
4. 如果发现电池或充电器温度过热, 请立即断开电池和充电器, 因为这可能是由内部短路引起的。





注意

- 1.如果长时间不用,请拔下电池,以防电池损坏。
- 2.不要打开、拆解或试图维修电池。
- 3.电池需断开连接接收板,才能进行充电。

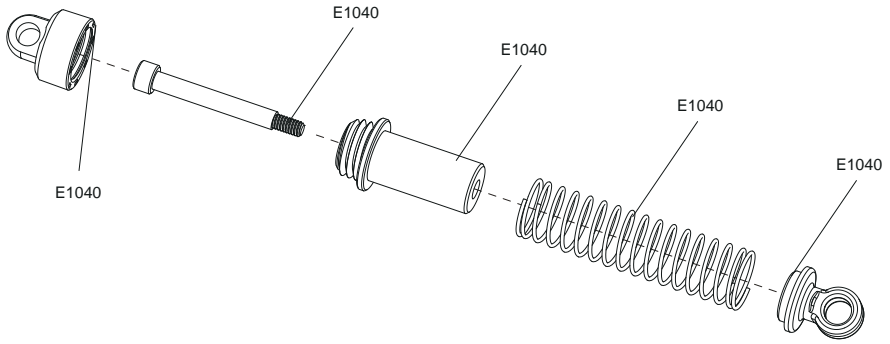
配件表

E1089	1:18 11817 引擎盖黄色
E1090	1:18 11817 引擎盖银灰色
E1091	1:18 11817 前/后灯杯组
E1092	1:18 11817 引擎盖连接座
E1093	1:18 11817 雨刮器及后视镜
E1094	1:18 11817 防撞
E1095	1:18 11817 灯镜片
E1096	1:18 11817 车壳黄色
E1097	1:18 11817 车壳银灰色
E1098	1:18 11817 底板
E1099	1:18 11817 手柄
E1011	轮胎
E1100	1:18 11817 轮毂银圈
E1101	遥控(跑车风格)+2合1电调接收器
E1014	7.4V 380mAh电池
E1102	1:18 11817 灯线组
E1016	USB 平衡充电器 7.4V 1000mA
E1103	二合一电调接收 V3
E1104	遥控(跑车风格)
E1019	EAZY050电机 +电机齿
E1080	1:18 11817 车窗

E1105	1:18 11817 齿轮套装
E1021	传动轴组
E1067	螺丝套装
E1023	五线舵机
E1036	后轮轴
E1037	1:18 轮轴塞
E1038	后桥胶件套装
E1040	1:18 避振器 13圈弹簧
E1106	1:18 11817 连杆
E1042	1:18 M4铝波
E1043	1:18 球轴
E1044	1:18 C座胶件
E1045	1:18 前/后桥胶件
E1046	1:18 舵机摇臂
E1107	1:18 11817 镜片
E1048	1:18 前轮转向轴
E1049	1:18 牙箱胶件
E1108	1:18 11817 后备轮架
E1109	1:18 11817 座椅
E1110	1:18 11817 仪表盘
E1111	1:18 11817 顶架

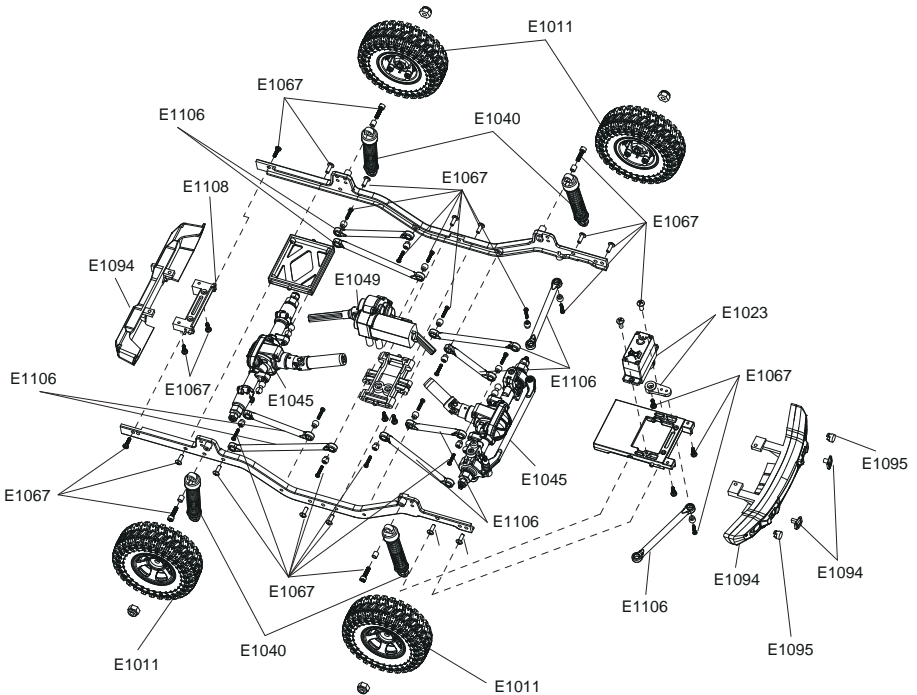
(EN) VIBRATION AVOIDANCE GROUP

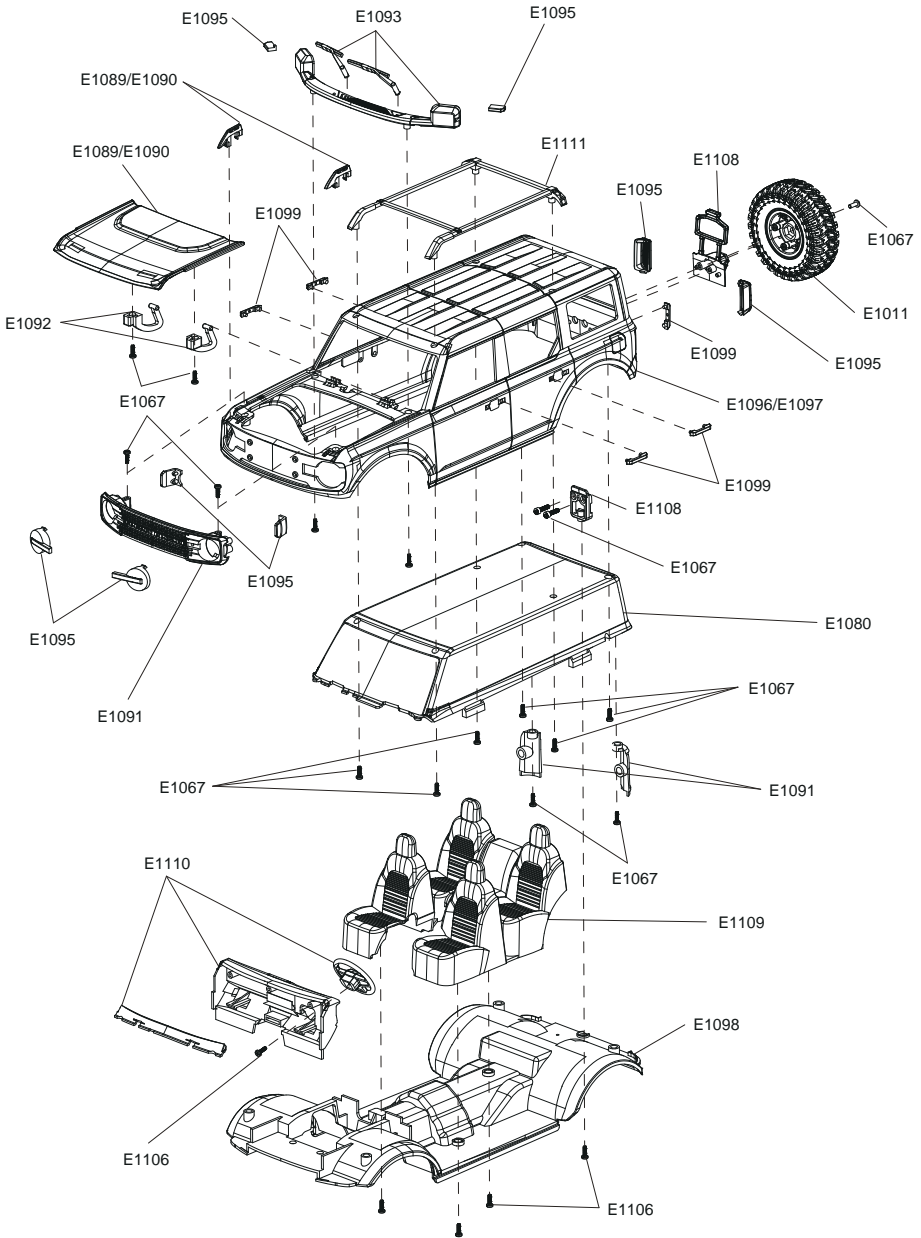
(CN) 避振组



(EN) CAR FRAME GROUP

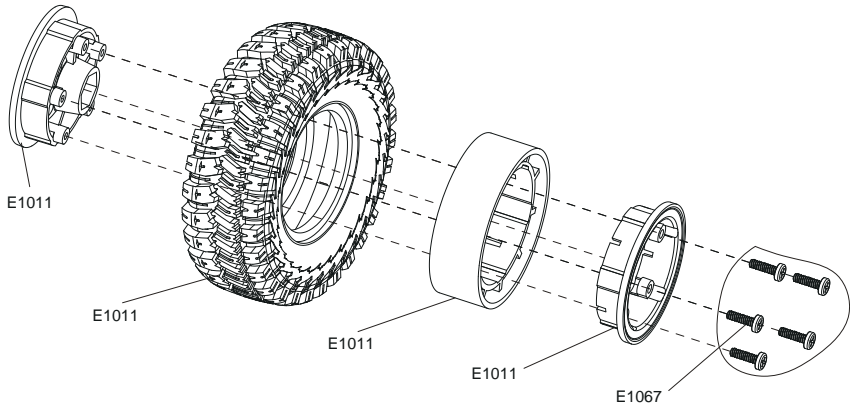
(CN) 车架组





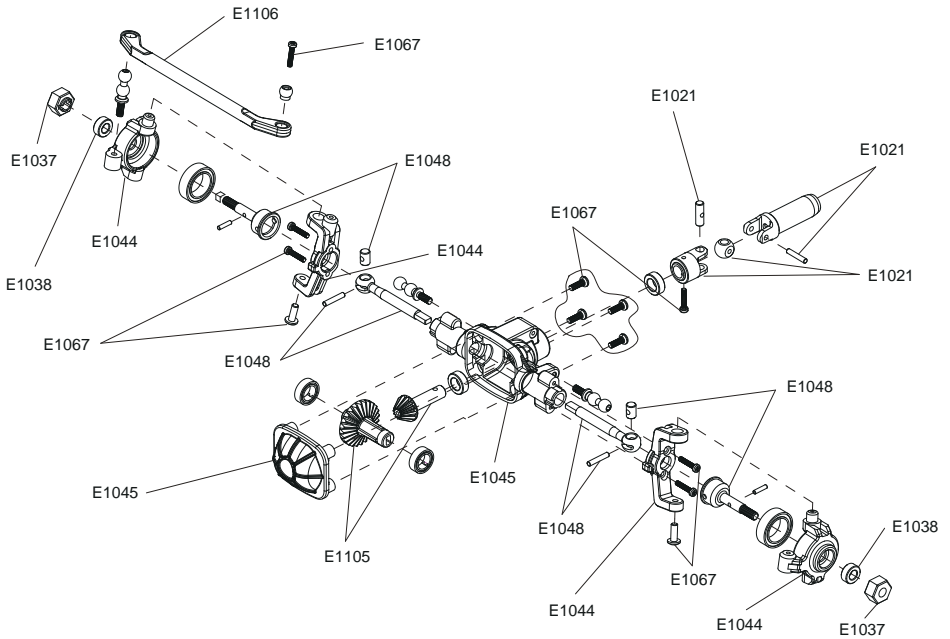
(EN) REAR WH

(CN) 轮胎组



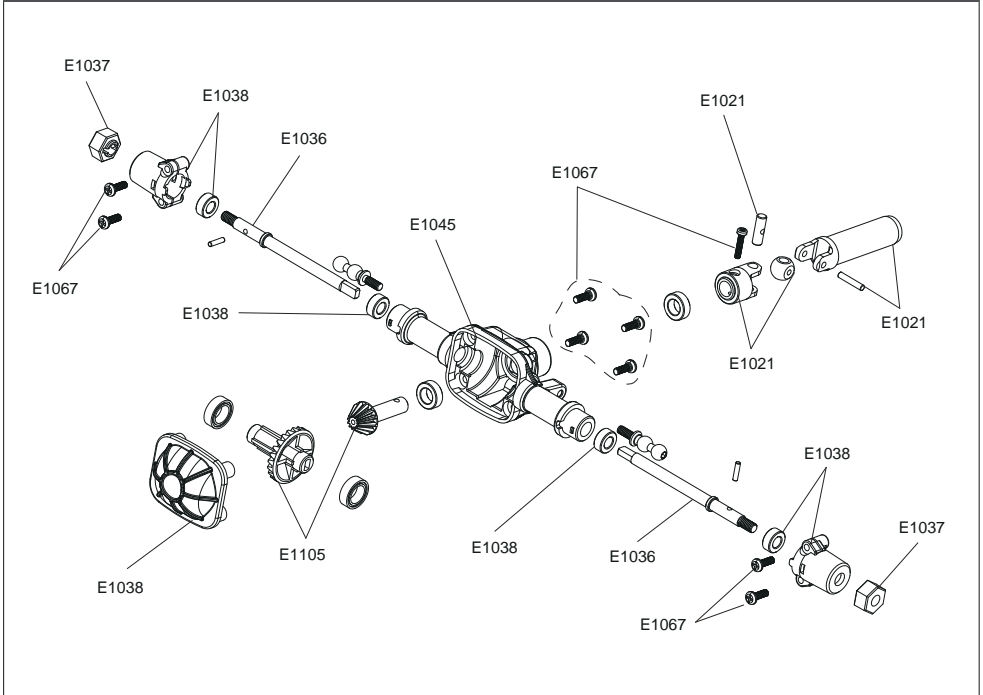
(EN) FRONT AXLE GROUP

(CN) 前桥组



(EN) REAR AXLE GROUP

(CN) 后桥组



(EN) DENTAL BOX GROUP

(CN) 牙箱组

