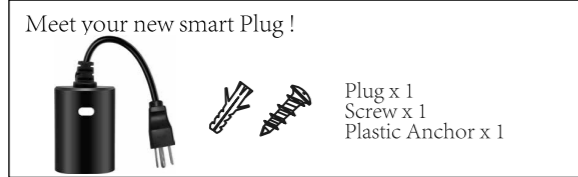


MINOSTON®

Wi-Fi Dimmer Plug

· MP22WD ·



Introduction

The Minoston MP22WD is a 400W MAX Loading smart dimmer plug designed for use seasonal and landscape lighting, porch light, and other indoor and outdoor plug-in small appliances. It's compatible with dimmable LED, halogen, incandescent, and fluorescent bulbs. Works with Amazon Alexa, Google Assistant. You can use the free App--Smart Life, or voice control by Alexa and Google Assistant to operate your devices in your home.

Specifications

Power: 125 VAC, 60Hz
Item Size: 56*80*39mm
Loading : 400W
Wireless Frequency: 2.4GHz
Wireless Standard: IEEE802.11b/g/n
Operating Temperature: -4° F--122° F



(A) Manual / Program button

Single press: manually turn on/off your device.
Hold: adjust brightness.
Triple press : Reset the device.

RGB LED indicator

- Sky-blue: Network configuration mode
- Blue: Light status indicator
- Red: Network Failure/Overloading Warning
- Purple: AP Network configuration mode

(B) Dimmer Outlet

This is your smart outlet that will be included in your smart home.

(C) Protector

Insert in connector when not in use.



For outdoor use
IP65 Rated

APP Connection



Note:

Your device needs to be installed in the network coverage of your home router.
1. Please scan the QR code to download the application "Minoston" or "Smart Life".

2. If you cannot download Smart Life app, please search "Minoston" or "Smart Life" on Google Play (for Android phone) or Apple Store (for iOS phone) to download.

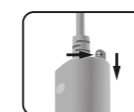
After you download the "Minoston" or "Smart Life App" and register a new account, please follow the instructions below to set up your smart switch

3. The smart switch can be also used with Amazon Echo and Google Home. Please scan the QR code below and follow the instructions if you have any trouble pairing with them.



Note:

- 1) Our products supports Bluetooth quick-fit and 2.4GHz Wi-Fi network.
- 2) 3 connection network modes: Bluetooth quick-fit Mode, Easy Mode, AP Mode. Choose the most suitable mode to configure the network.
- 3) Please operate quickly when the sky-blue LED indicator blinks rapidly.
- 4)The indicator light flashes to indicate that the device enters the distribution network mode. Please complete the standard operation within 3 minutes.
- 5) If you failed to connect with Wi-Fi network, please try to operate several times more.



Use our screws and anchor to lock it in the wall.(optional)



Overload protection prevents the protected device from overheating. When the temperature of the device is too high, the LED will light up red and cut off the power. Please power off the device and use it after the temperature of the device has dropped.



When the LED is purple (AP mode), please press the button 3 times quickly until the LED change to Sky-blue and LED blinks--Back to EASY MODE.

NOTE:Do not plug an extension cord in this smart plug.



Bluetooth quick-fit Mode



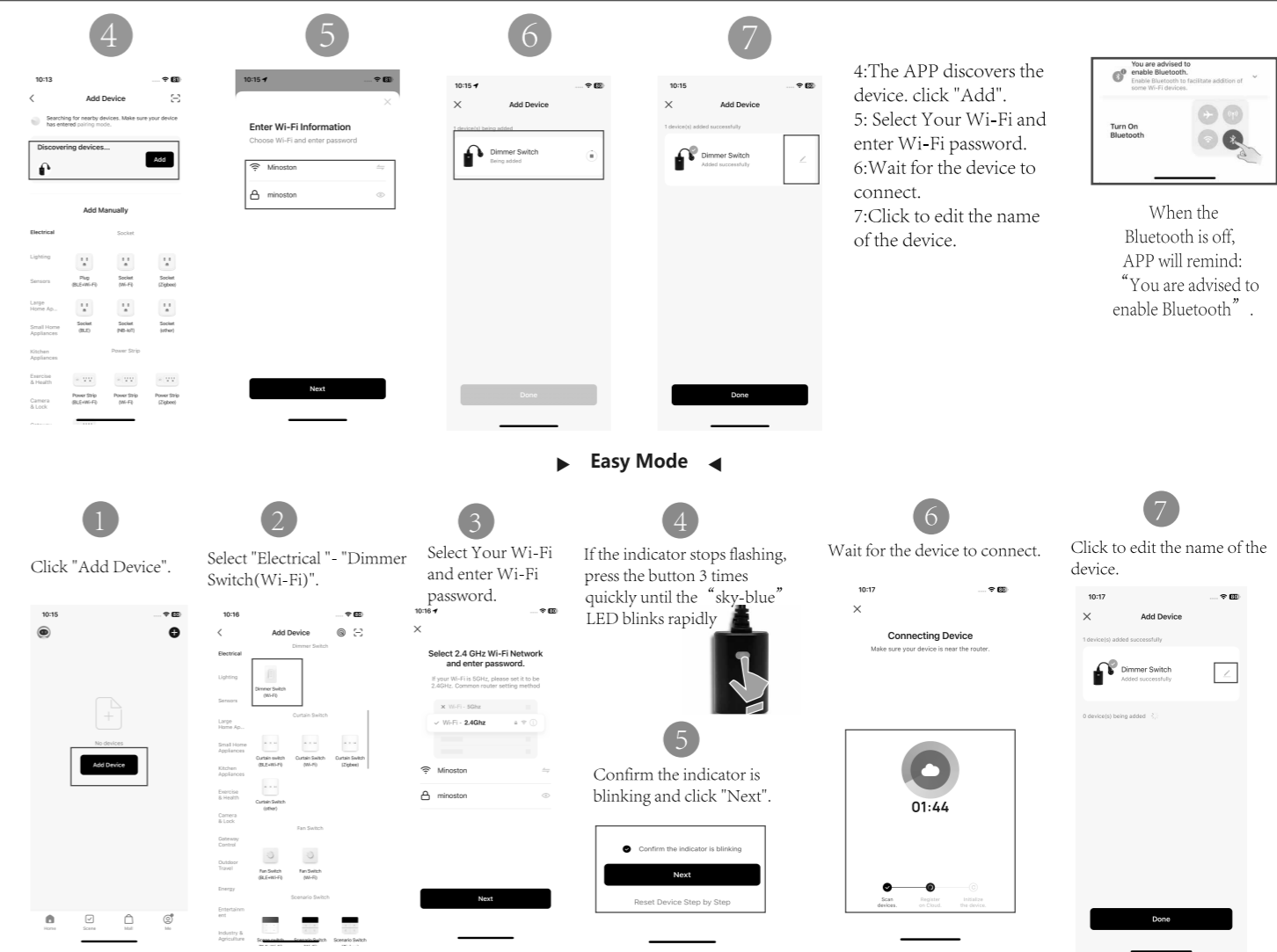
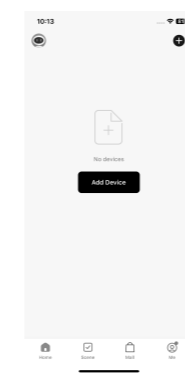
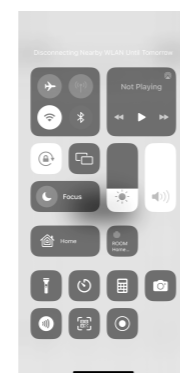
- 1: Plug-in the device directly to the wall outlet.
Once plugged in, it will enter into the Bluetooth auto-connection mode.

• Sky-blue

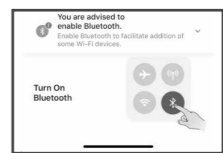
The auto-connection comes with led blinks. The LED will blinks 3 minutes. If it stopped, please press the local button 3 times quickly to reset it.

2. Turn on your Phone bluetooth.

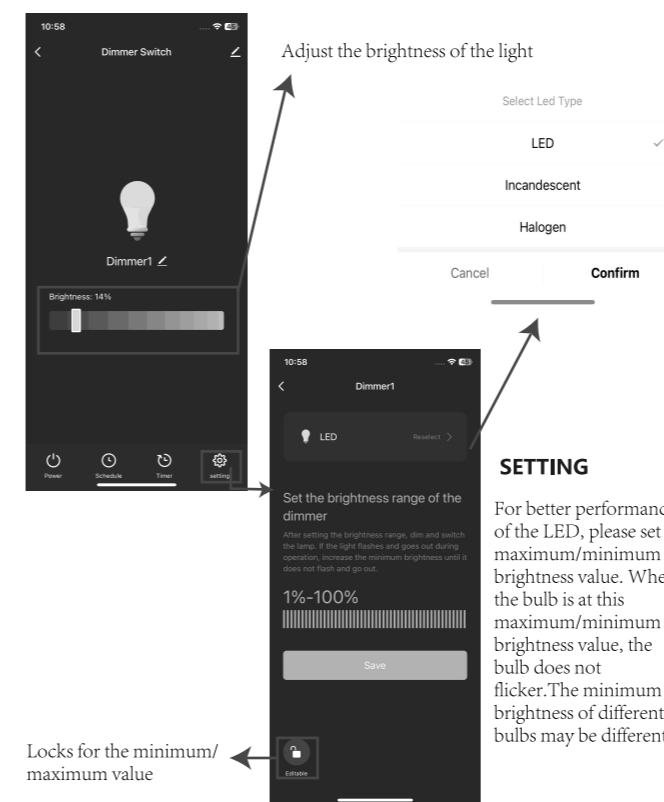
3: Click "Add Device" to add this plug in the Minoston APP.



- 4:The APP discovers the device. click "Add".
- 5: Select Your Wi-Fi and enter Wi-Fi password.
- 6:Wait for the device to connect.
- 7:Click to edit the name of the device.



When the Bluetooth is off, APP will remind: "You are advised to enable Bluetooth".



FCC warning:

This device complies with Part 15 of the FCC Rules. Operation is subject to the following two conditions:

- (1) this device may not cause harmful interference, and

(2) this device must accept any interference received, including interference that may cause undesired operation.

changes or modifications not expressly approved by the party responsible for compliance could void the user's authority to operate the equipment.
NOTE: This equipment has been tested and found to comply with the limits for a Class B digital device, pursuant to Part 15 of the FCC Rules. These limits are designed to provide reasonable protection against harmful interference in a residential installation. This equipment generates, uses and can radiate radio frequency energy and, if not installed and used in accordance with the instructions, may cause harmful interference to radio communications. However, there is no guarantee that interference will not occur in a particular installation. If this equipment does cause harmful interference to radio or television reception, which can be determined by turning the equipment off and on, the user is encouraged to try to correct the interference by one or more of the following measures:

- Reorient or relocate the receiving antenna.
- Increase the separation between the equipment and receiver.
- Connect the equipment into an outlet on a circuit different from that to which the receiver is connected.
- Consult the dealer or an experienced radio/TV technician for help.

FCC Radiation Exposure Statement:

This equipment complies with FCC radiation exposure limits set forth for an uncontrolled environment. This transmitter must not be co-located or operating in conjunction with any other antenna or transmitter. This equipment should be installed and operated with minimum distance 20cm between the radiator& your body.

CAUTION - PLEASE READ!

This device (MP22WD) is intended for installation in accordance with the National Electric Code and local regulations in the United States, or the Canadian Electrical Code and local regulations in Canada. If you are unsure or uncomfortable about performing this installation consult a qualified electrician.

MEDICAL EQUIPMENT

Please DO NOT use this plug to control Medical or Life Support equipment. This device should never be used to control the On/Off status of Medical and/or Life Support equipment.

OTHER WARNINGS

- Risk of Fire
- Risk of Electrical Shock
- Risk of Burns