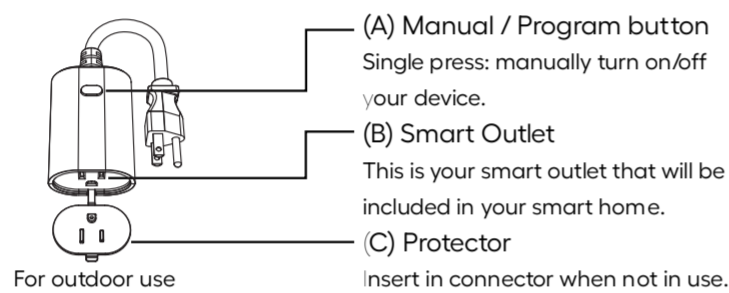
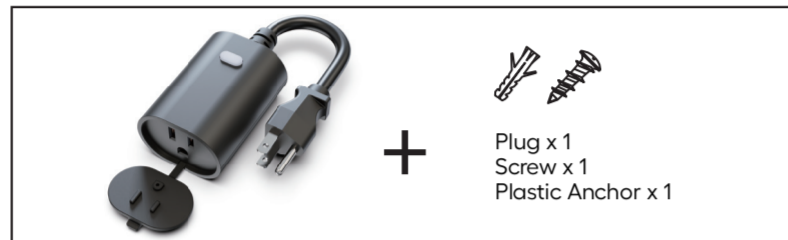


MINOSTON[®]

Wi-Fi Outdoor Smart Plug

MP22WH



Note:

- Your device needs to be installed in the network coverage of your home router.
1. Please scan the QR code to download the application "Minoston".
 2. If you cannot download Minoston app, please search "Minoston" on Google Play (for Android phone) or Apple Store (for iOS phone) to download. After you download the Minoston App and register a new account, please follow the instructions below to set up your smart switch.
 3. The smart switch can be also used with Amazon Echo and Google Home. Please scan the QR code below and follow the instructions if you have any trouble pairing with them.



Note:

1. Our products support Bluetooth quick-fit and 2.4GHz Wi-Fi network.
2. Please operate quickly when the white LED indicator blinks rapidly.
3. When the indicator flashes, it means the device enters the configuration network mode. Please complete standard operations within 3 minutes.
4. If the device fails to connect to your Wi-Fi network, try to operate it a few more times.

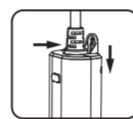
If you have any questions, please contact us at ask@minoston.com

Introduction

The Minoston is an enabled 15A (1875W) Resistive outdoor smart plug designed for use seasonal and landscape lighting, porch light, fountains, pumps and other indoor and outdoor plug-in appliances. It's compatible with LED, halogen, incandescent, xenon, fluorescent and compact fluorescent bulbs. Work with Amazon Alexa, Google Assistant. You can use free App-Minoston, or voice control by Alexa and Google Assistant to operate your devices in your home.

Specifications

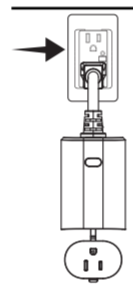
Model: MP22WH
Power: 125VAC, 60Hz
Item Size: 56*80*39mm
Loading: 15A 1875W RESISTIVE OR GENERAL PURPOSE 5A MAX
Wireless Frequency: 2.4GHz
Wireless Standard: IEEE802.11b/g/n
Operating Temperature: -4° F-122° F



Use our screws and an anchor to lock it in the wall.(optional)

Plug the light you want to control into the Smart plug controlled outlet.

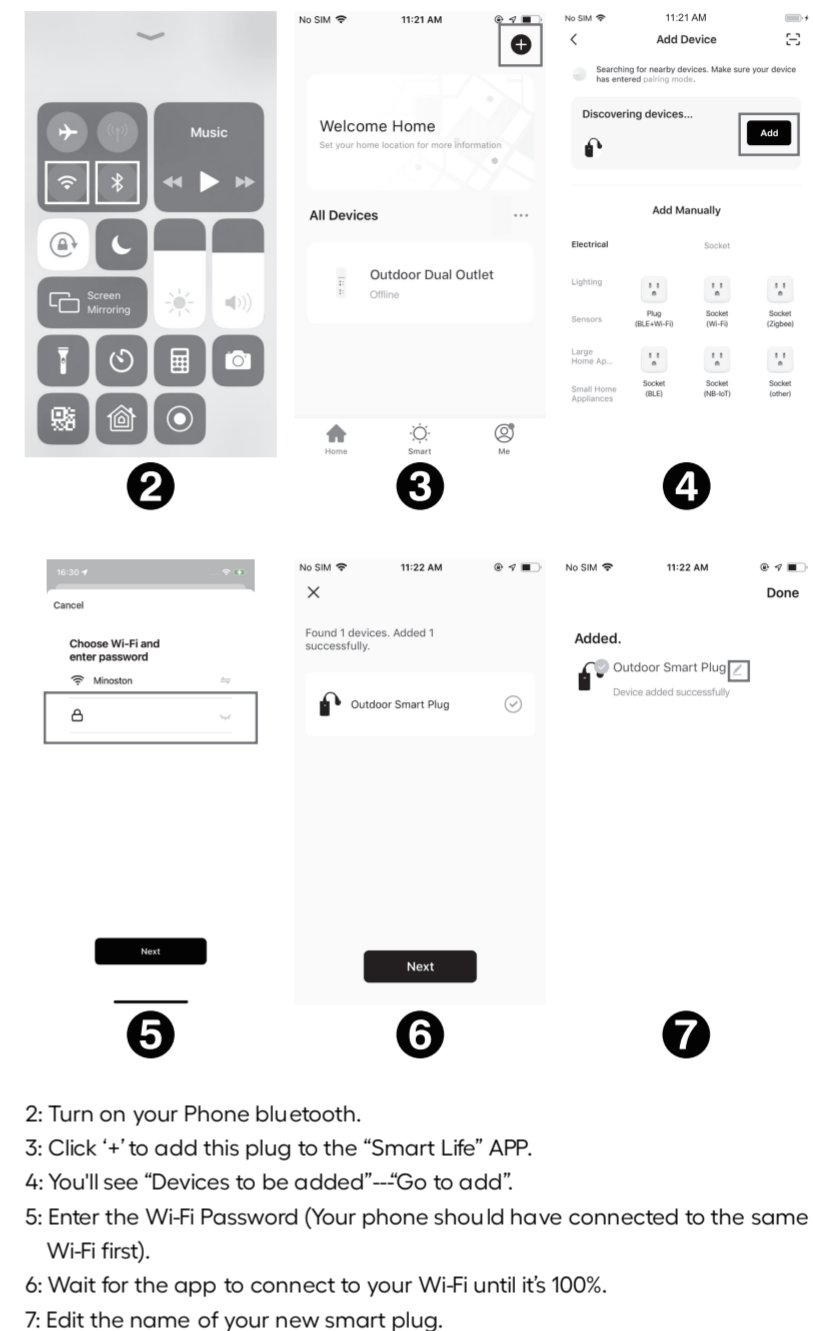
NOTE: Plug directly into the outlet, do not use with extension cords.



1. Plug-in the device directly to the wall outlet. Once plugged in, it will enter into the Bluetooth auto-connection mode.

White LED indicator

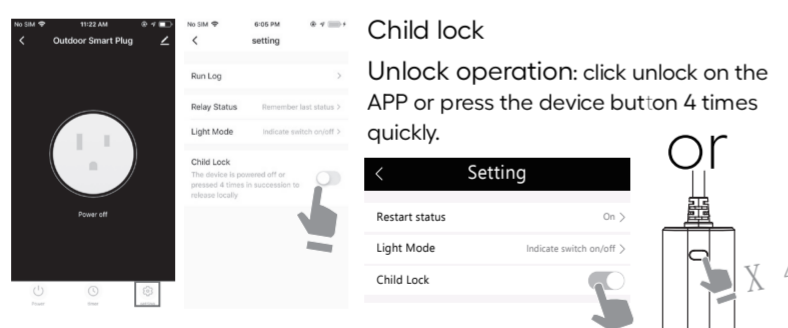
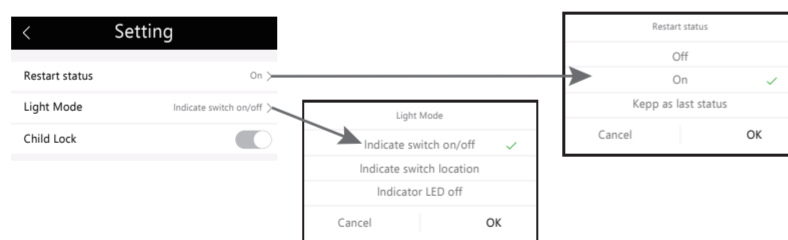
The auto-connection comes with a blinking LED. The LED will blink for 3 minutes. If it stopped, please hold the button for 5 seconds until the LED blinks again.



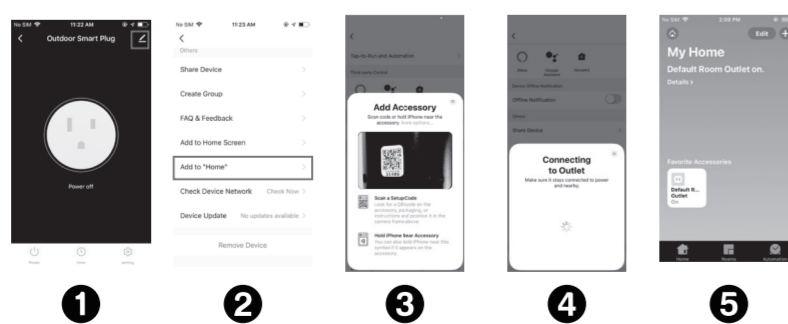
- 2: Turn on your Phone bluetooth.
- 3: Click '+' to add this plug to the "Smart Life" APP.
- 4: You'll see "Devices to be added" --"Go to add".
- 5: Enter the Wi-Fi Password (Your phone should have connected to the same Wi-Fi first).
- 6: Wait for the app to connect to your Wi-Fi until it's 100%.
- 7: Edit the name of your new smart plug.

SETTING

- 1: Restart status: This parameter can access you to set the plug to be on/off after power failure.
- 2: Light mode: This parameter can access you to choose the led indicator to be on when the plug is on /off, or LED indicator remains on/off all times.
- 3: Child lock: When the child lock function is ON, any other operation keys will temporarily lose their control functions.

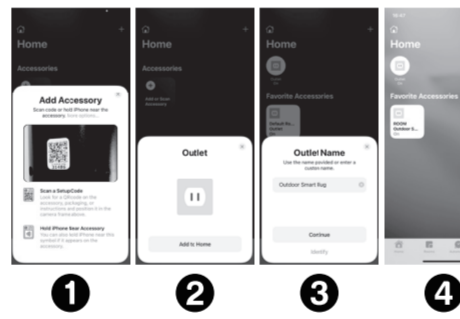


Add device to Home (only for iPhone/iPad)



- 1: Click the icon button in the upper right corner to enter the device details page, find and click Add to "Homepage".
- 2: Click Add to "Home".
- 3: Look for the code on the accessory or its packaging and position it in the frame.
- 4: Waiting for connection. It will show that make sure it stays connected to the power source and nearby.
- 5: Finish adding.

Use iPhone's own APP to add devices



- 1: Open the "home" app, click "Add or scan accessory" to enter the page.
- 2: Select an accessory to add to home.
- 3: Check if it is correct.
- 4: Finish adding.

FCC warning:

This device complies with Part 15 of the FCC Rules. Operation is subject to the following two conditions:
(1) This device may not cause harmful interference,
(2) This device must accept any interference received, including interference that may cause undesired operation, changes or modifications not expressly approved by the party responsible for compliance could void the user's authority to operate the equipment.

NOTE:

This equipment has been tested and found to comply with the limits for a Class B digital device, pursuant to Part 15 of the FCC Rules. These limits are designed to provide reasonable protection against harmful interference in a residential installation. This equipment generates, uses and can radiate radio frequency energy and, if not installed and used in accordance with the instructions, may cause harmful interference to radio communications. However, there is no guarantee that interference will not occur in a particular installation. If this equipment does cause harmful interference to radio or television reception, which can be determined by turning the equipment off and on, the user is encouraged to try to correct the interference by one or more of the following measures:
-- Reorient or relocate the receiving antenna.
-- Increase the separation between the equipment and receiver.
-- Connect the equipment into an outlet on a circuit different from that to which the receiver is connected.
-- Consult the dealer or an experienced radio/TV technician for help.

FCC Radiation Exposure Statement:

This equipment complies with FCC radiation exposure limits set forth for an uncontrolled environment. This transmitter must not be co-located or operating in conjunction with any other antenna or transmitter. This equipment should be installed and operated with minimum distance 20cm between the radiator& your body.

CAUTION - PLEASE READ!

This device is intended for installation in accordance with the National Electric Code and local regulations in the United States, or the Canadian Electrical Code and local regulations in Canada. If you are unsure or uncomfortable about performing this installation consult a qualified electrician.

MEDICAL EQUIPMENT

Please DO NOT use this plug to control Medical or Life Support equipment. This device should never be used to control the On/Off status of Medical and/or Life Support equipment.

OTHER WARNINGS

Risk of Fire / Risk of Electrical Shock / Risk of Burns

IMPORTANT SAFETY INSTRUCTIONS

1. READ AND FOLLOW ALL SAFETY INSTRUCTIONS.
2. Read and follow all instructions that are on the product or provided with the product.
3. do not use an extension cord.
4. Reference the National Electrical Code, NFPA 70, specifically for the installation of wiring and clearances from power and lighting conductors.
5. Installation work and electrical wiring must be done by qualified person(s) in accordance with all applicable codes and standards, including fire-rated construction.
6. do not install or use within 10 feet of a pool
7. do not use in a bathroom
8. WARNING: Risk of Electric Shock. When used outdoors, install only to a covered Class A GFCI protected receptacle that is weatherproof with the power unit connected to the receptacle. If one is not provided, contact a qualified electrician for proper installation. Ensure that the power unit and cord do not interfere with completely closing the receptacle cover.
9. WARNING: Risk of Electric Shock. Mount the unit at a height greater than 1 foot from the ground surface
10. WARNING: Risk of Electric fire. install only to a receptacle protected by 20A branch circuit over current protection.

SAVE THESE INSTRUCTIONS – This manual contains important safety and operating instructions.