



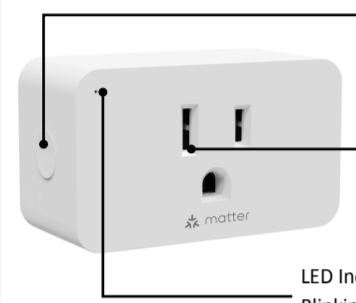
Wi-Fi Mini Smart Plug (Matter)

• MP25M •

Button Function:
Press Once: Turn ON/OFF the device.
Press and hold for 5 seconds: Restore factory default settings.

Smart Outlet: Plug in the device you want to smart control.

LED Indicator:
Blinking Blue: Device is in pairing mode(Ready for setup)



Specifications

Input Voltage: 125V AC, 60Hz
Max. Load: 1875W General Purpose, 10A Tungsten, 1/2 HP
Wireless Connectivity: Wi-Fi (2.4GHz)
Wireless Standard: IEEE802.11b/g/n
Operating Temperature: 32° F~104° F

Introduction

Minoston Matter Smart Plug MP25M is a versatile device that allows you to turn traditional, non-smart electrical appliances into smart devices that can be controlled remotely. It is a Matter-Certificated smart plug that can work seamlessly with other Matter-compatible devices.

Remote Control: Like traditional smart plugs, it can be used to remotely control the power status of connected devices using an app or a compatible smart home hub.

Voice Control: If the MP25M integrates with popular voice assistants like Amazon Alexa, Google Assistant, or Apple HomeKit, the connected device can be controlled using voice commands.

Automation and Scenes: Enable to create automation routines or scenes involving multiple devices, allowing for personalized and efficient control of your smart home.

Matter Compatible Hub

Note: Please confirm whether the version of the hub supports matter devices. Hub version may need to be upgraded.

Smart Life APP	Alexa APP	Google Home APP	Apple Home APP	SmartThings APP
----------------	-----------	-----------------	----------------	-----------------

To add the Matter protocol, use the APP to scan the QR code of matter.

Setup the Device via Smart Life

Note: Ensure your Wi-Fi network is operating on a 2.4GHz frequency.

1. Download the Smart Life app from the App Store (iOS) or Google Play Store (Android), or by scanning the QR code below.

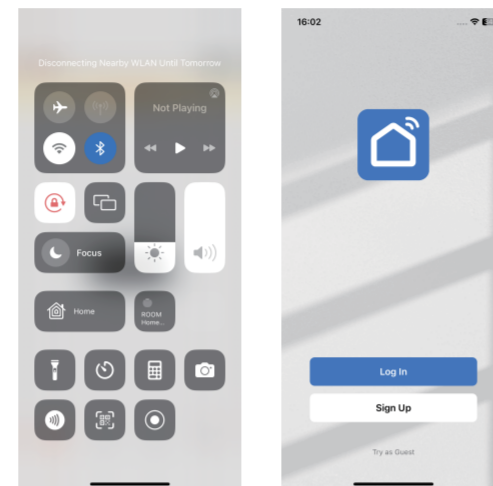


①

2. Open the Smart Life app and create an account or log in if you already have one.
3. Open the Bluetooth on your phone.
4. Plug in the device and ensure the device is in pairing mode.(LED indicator is flashing)

Note: If the indicator light is not flashing, press and hold the device button for 5 seconds to reset the device.

5. Add devices by scanning the QR code Mode(A) or quick-fit mode(B).Refer to the following steps for details:

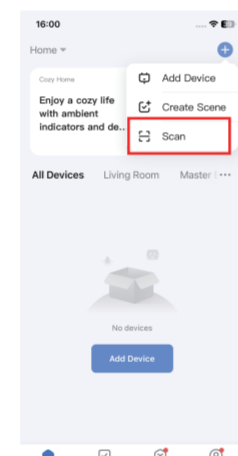


②

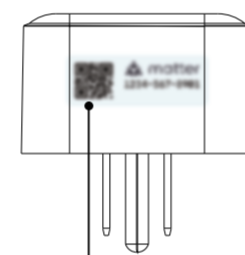
③

A. Matter Scan-Code Add Mode

- (1) Tap the '+' icon and then tap the 'Scan' icon to add a new device.
- (2) Scan the QR code/Enter Setup code on the device.
- (3) Select your Wi-Fi (2.4Ghz band) and enter the password.
- (4) Once connected, you can assign a name to your smart plug for easy identification.

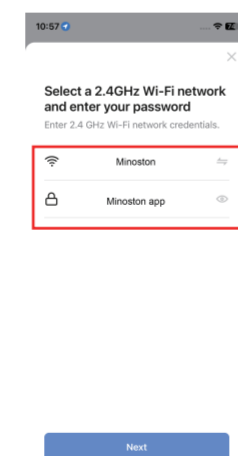


①

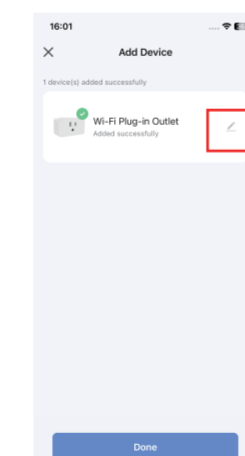


Scan here for Matter inclusion

②



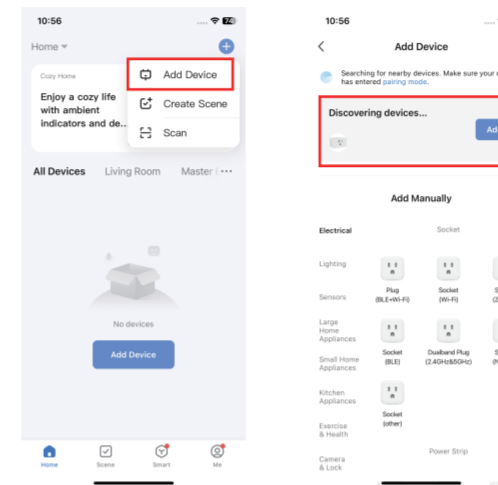
③



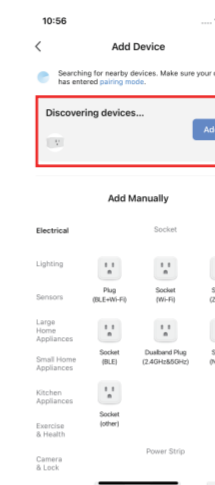
④

B.Quickly-fit Mode

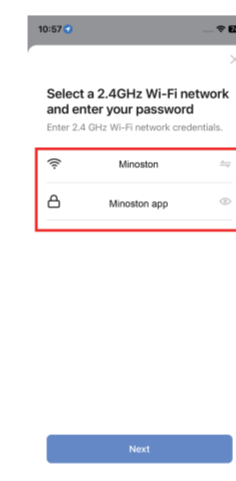
- (1) Tap the '+' icon and then tap "Add Device" to add a new device.
- (2) Bluetooth will automatically search for the nearby device and display it on the screen. Tap 'add' to add the searched device.
- (3) Select your Wi-Fi (2.4Ghz band) and enter the password.
- (4) Once connected, you can assign a name to your smart plug for easy identification.



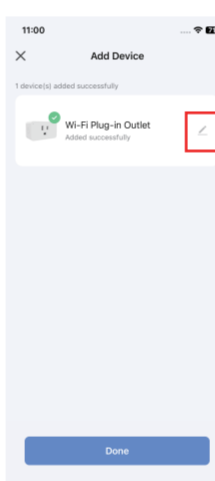
①



②



③



④

Other Setup Guides:

More matter setup guides for Alexa, Apple Home, Google Home, SmartThings, please refer to MP25M Installation Manual on www.minoston.com/pages/minoston-setup-instructions.



If you have any questions, please contact us at ask@minoston.com or www.minoston.com

Troubleshooting

1. If the smart plug is not connecting, ensure it is within range of your Wi-Fi router.
2. Check that your Wi-Fi network is operating on a 2.4GHz frequency.
3. Reset the smart plug by pressing and holding the reset button for 5 seconds. Then, add it again.
4. To avoid failure to add devices due to operational errors, follow the steps several times.

FCC Warning:

This device complies with Part 15 of the FCC Rules. Operation is subject to the following two conditions:

- (1) This device may not cause harmful interference
- (2) This device must accept any interference received, including interference that may cause undesired operation. changes or modifications not expressly approved by the party responsible for compliance could void the user's authority to operate the equipment.

NOTE:

This equipment has been tested and found to comply with the limits for a Class B digital device, pursuant to Part 15 of the FCC Rules. These limits are designed to provide reasonable protection against harmful interference in a residential installation. This equipment generates, uses and can radiate radio frequency energy and, if not installed and used in accordance with the instructions, may cause harmful interference to radio communications. However, there is no guarantee that interference will not occur in a particular installation. If this equipment does cause harmful interference to radio or television reception, which can be determined by turning the equipment off and on, the user is encouraged to try to correct the interference by one or more of the following measures:

- Reorient or relocate the receiving antenna.
- Increase the separation between the equipment and receiver.
- Connect the equipment into an outlet on a circuit different from that to which the receiver is connected.
- Consult the dealer or an experienced radio/TV technician for help.

FCC Radiation Exposure Statement:

This equipment complies with FCC radiation exposure limits set forth for an uncontrolled environment. This transmitter must not be co-located or operating in conjunction with any other antenna or transmitter. This equipment should be installed and operated with a minimum distance 20cm between the radiator& your body.

CAUTION - PLEASE READ!

This equipment complies with FCC radiation exposure limits set forth for an uncontrolled environment. This transmitter must not be co-located or operating in conjunction with any other antenna or transmitter. This equipment should be installed and operated with a minimum distance 20cm between the radiator& your body.

MEDICAL EQUIPMENT

Please DO NOT use this plug to control Medical or Life Support equipment. This device should never be used to control the On/Off status of Medical and/or Life Support equipment.

OTHER WARNINGS

Risk of Fire / Risk of Electrical Shock / Risk of Burns

IMPORTANT SAFETY INSTRUCTIONS

1. READ AND FOLLOW ALL SAFETY INSTRUCTIONS.
2. Read and follow all instructions that are on the product or provided with the product.
3. Do not use an extension cord at the output outlet.
4. Reference the National Electrical Code, NFPA 70, specifically for the installation of wiring and clearances from power and lighting conductors.
5. Installation work and electrical wiring must be done by qualified person(s) in accordance with all applicable codes and standards, including fire-rated construction.
6. It is recommended that the device is used indoors in a dry location only.