

Parts List

①



②



③



④



USB adapter
please Use
according to
your own usage

①	Rear entertainment screen	③	Emergency plug
②	Main wiring harness	④	TYPE-C male to USB female adapter

1. Tools required for installation

Plastic tools, T20 socket, Screwdriver, Threading tape, Tape

2. Installation precautions

Tip: In order to install the work more quickly, please be sure to read the Read the instructions.



Year: Model 3 / ModelY(19+)

Name: Model 3/Y Highland rear smart entertainment screen H 86 Android version

Features

1. Installation: Dedicated to special vehicles, **non-destructive installation, does not affect the functions of the original vehicle**
2. Experience: Android 12 high-performance operating system, 8.66 -inch rear largest high-definition full-laminated screen 1280*800P , vehicle-machine integration
3. Functions: Rear air conditioning control + left and right adjustment of large air outlet, massage of main and passenger seats, heating control of front and rear seats, adjustment of passenger seat, built-in Carplay, negative ion air purification, anti-player lock, APP application Menu, one-touch opening of glove box, one-touch screen lock, music / video playback, wireless WIFI , OTA upgrade, automatic screen off, built-in speaker

Product Description

- 1) Specially designed for special vehicles, **non-destructive installation** without damaging the original vehicle wiring harness and functions.
- 2) Android 12 high-performance operating system, integrated with the car to achieve vehicle-machine **integration** , 8.66- inch high-definition full- **laminated screen**
- 3) **Rear air conditioning control** (air conditioning switch, air volume, temperature adjustment) + **left and right adjustment of the large air outlet** ; **massage for the main and passenger seats** (only applicable to the original car with lumbar support, click the icon position to realize: first gear, second gear, off), **front and rear seat heating control** (three-speed mode / independent adjustment of individual seats / one-button off) , **passenger seat adjustment** (click the corresponding adjustment icon, backrest adjustment up and down, seat adjustment front and rear); built-in **Carplay** supports Apple Carplay + Android auto , the mobile phone is interconnected with the rear system; **wireless Bluetooth** (connect to the original car Bluetooth to use the original car audio and built-in speakers); **negative ion air purification**: when turned on, the polluted air in the car can be neutralized. **Anti-playing child lock**: Other functions of the screen cannot be operated, which is equivalent to the lock screen function. Click once to open, click once to close, child lock password 8687) ; **APP application menu**: After connecting to WIFI , play online videos, music, etc. in the **APP application menu** You can download the APP you need ; **open the glove box with one click**; **lock the screen with one click**; **play music and videos from the USB flash drive** , and control the home screen volume, up and down songs, and playback and pause through the back row; **Automatically turn off the screen** (the screen will automatically turn off after 5 minutes when no one is sitting in the back row , through the gravity sensor of the original car seat, the settings page has a switch option, the screen will stay on after the sensor function is turned off, and the screen will be in the screen saver state if no operation is performed within 5 minutes), supports **OTA upgrade**

8.66 -inch high-definition laminated screen

Rear air conditioning control

High performance operating system

Front and rear seat heating controls

Open the glove box with one click

Driver and passenger massage

Wireless Carplay

Passenger seat adjustment

APP application menu

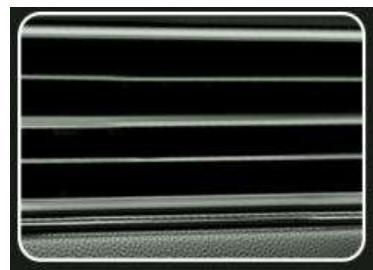
Wireless bluetooth

Air outlet left and right adjustment

OTA upgrade

Note: It does not support models before 19 years old, but is suitable for models after 19+ (Standard configuration with two wire harnesses RWD)

Model 3Y Highland Rear Smart Screen H86 Android Version - Function Introduction



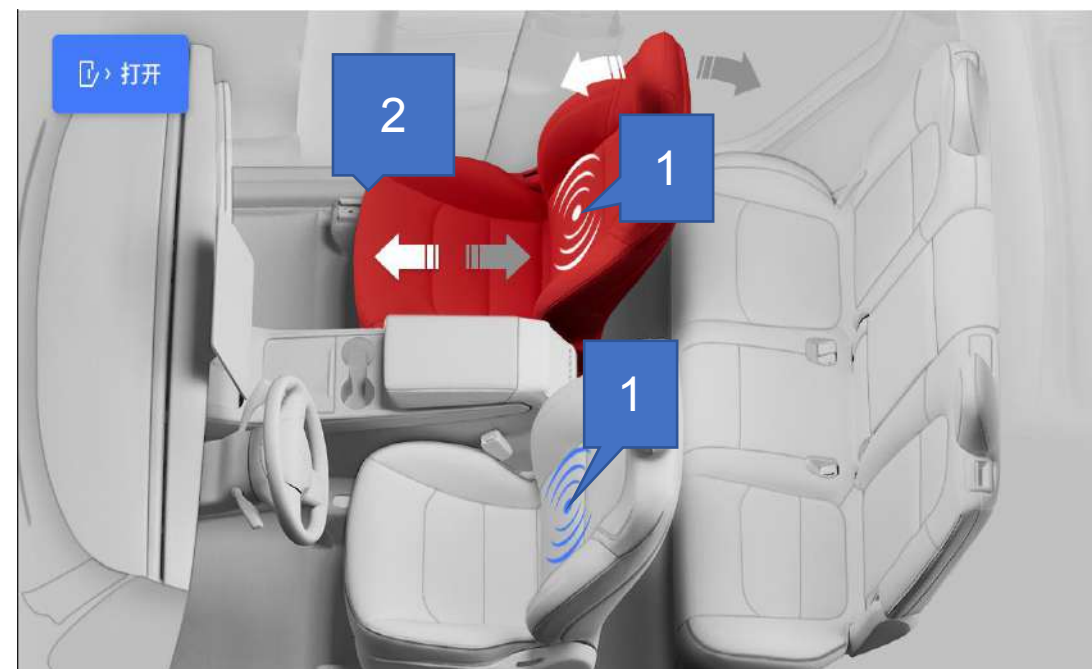
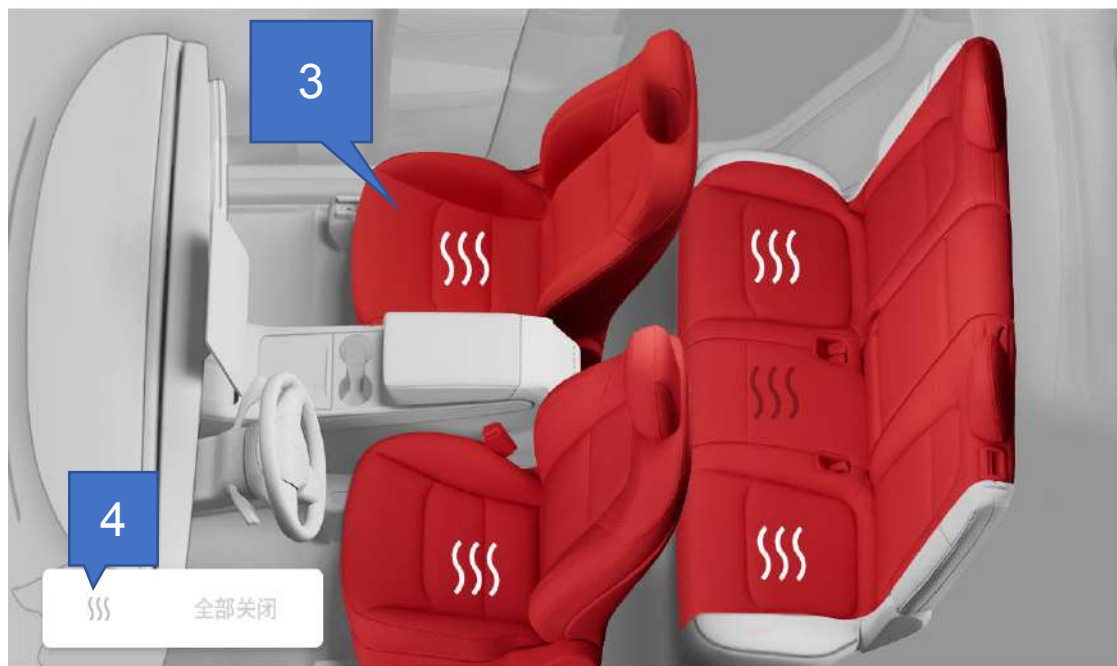
Adjustable left and right air outlets

Extra large air outlet

Super large 8.66 high definition super large screen
Bring stunning visual experience



8-core high-performance CPU
4G+64G large storage

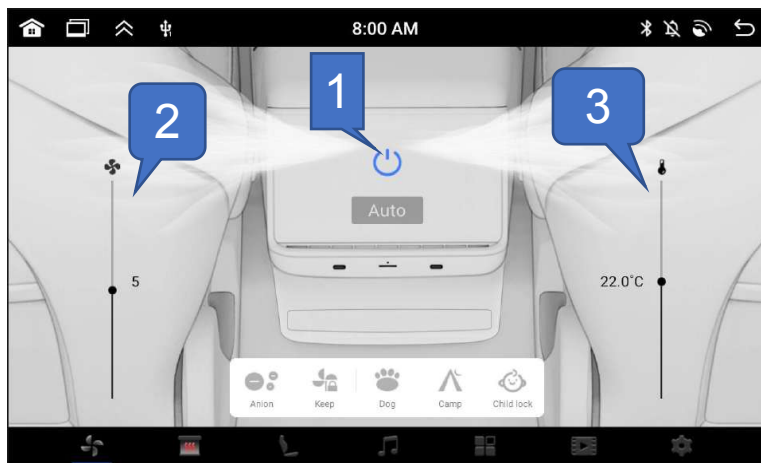


Click on the seat to control it

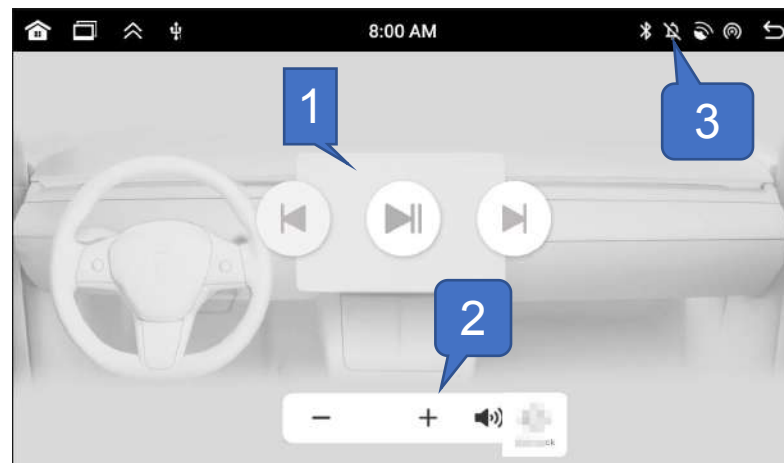
1. Massage function for the driver and passenger
(Only applicable to the original car with waist support)
(Click the icon position to achieve: first gear, second gear, close)
2. The co-pilot adjusts the seat back up and down, front and back of the seat
3. The 5 - seat front and rear seats are heated in three levels (can be adjusted independently)
4. All seat heating is turned off

Note: When selecting the adjustment status, it will appear in red.

Model 3Y Highland Rear Smart Screen H86 Android Version - Function Introduction



- Air conditioning interface**
1. One-button switch selection
 2. Wind speed adjustment
 3. Temperature adjustment

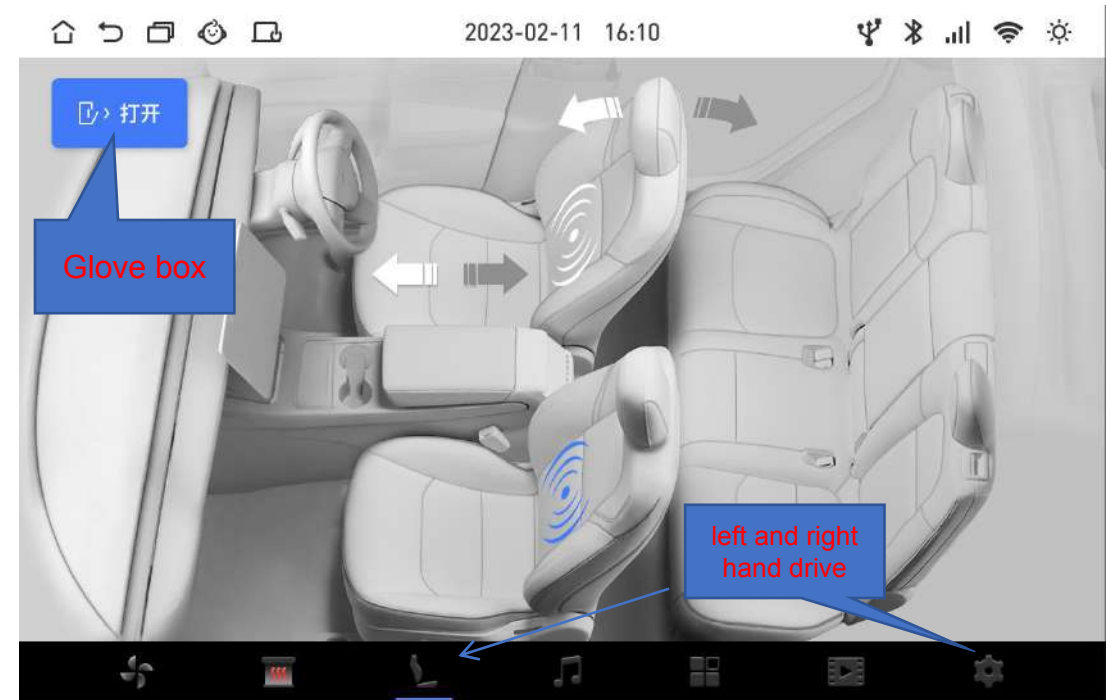
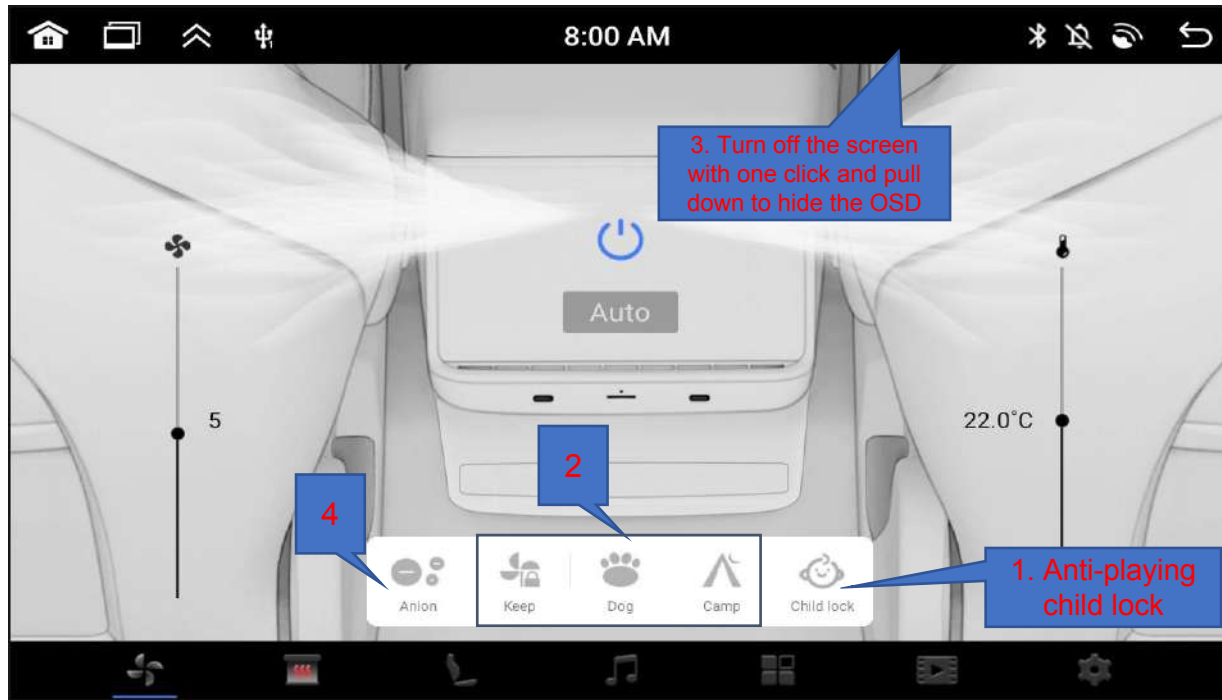


1. Switch the original car music playback to the previous and next songs and play ,pause
2. Adjust the volume
3. One-click mute



- View and play music, videos, and pictures on USB flash drives, switch up and down songs, and play ,pause

Model 3Y Highland Rear Smart Screen H86 Android Version - Function Introduction



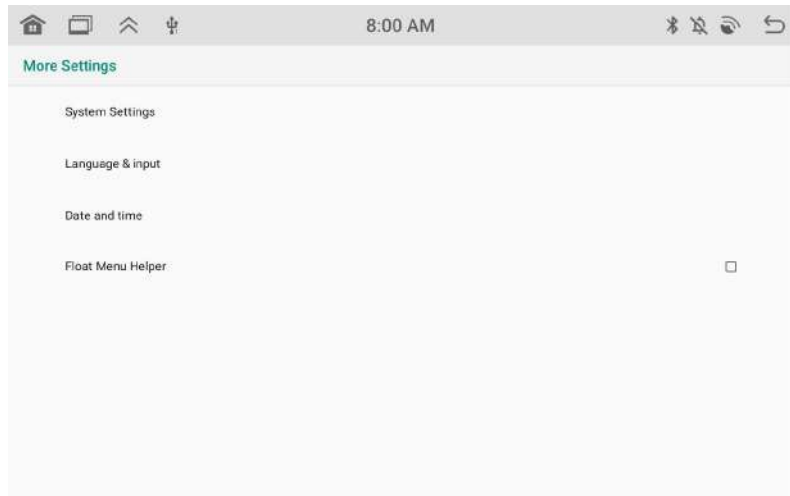
Convenient functions

1. Turn on the child anti-player lock and enter the password 8687. After entering the password 8687, other functions of the screen cannot be operated. It is equivalent to the lock screen function. The same operation is used to unlock the screen.
2. Synchronize the original car screen and quickly open: hold, dog, and camping modes
3. Turn off the screen with one click, pull down the top of the screen to display the hidden OSD, short press in the upper right corner to turn off the screen, long press to take a screenshot
4. Negative ion air purification function

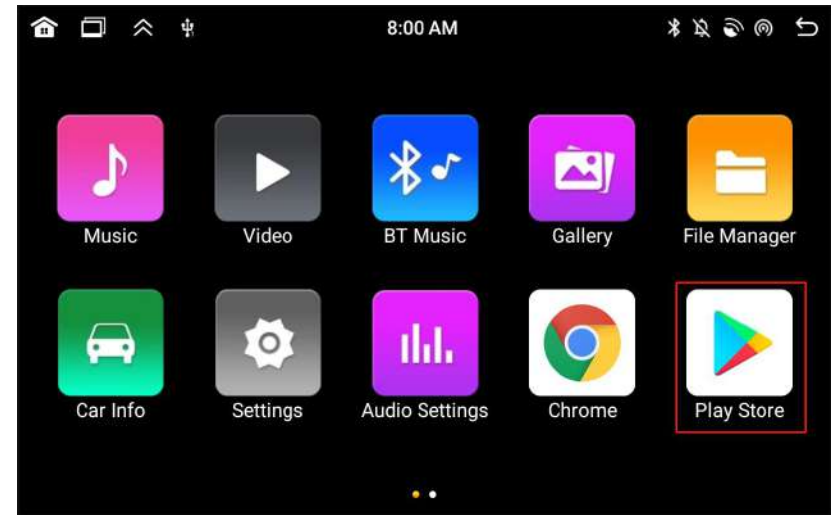
Convenient functions

1. Click on the settings page to enter the left or right rudder seat display (switch on the settings page), and adjust the seat massage and passenger seat adjustment on the main picture interface
2. Open the glove box with one click

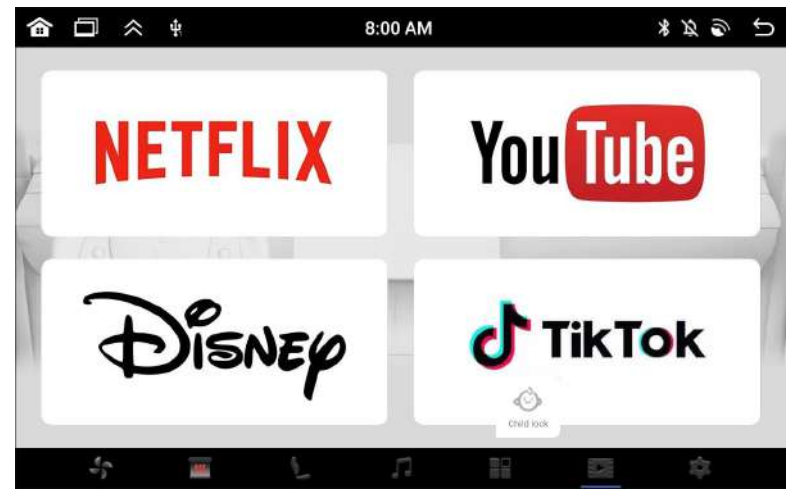
Model 3Y Highland Rear Smart Screen H86 Android Version - Function Introduction



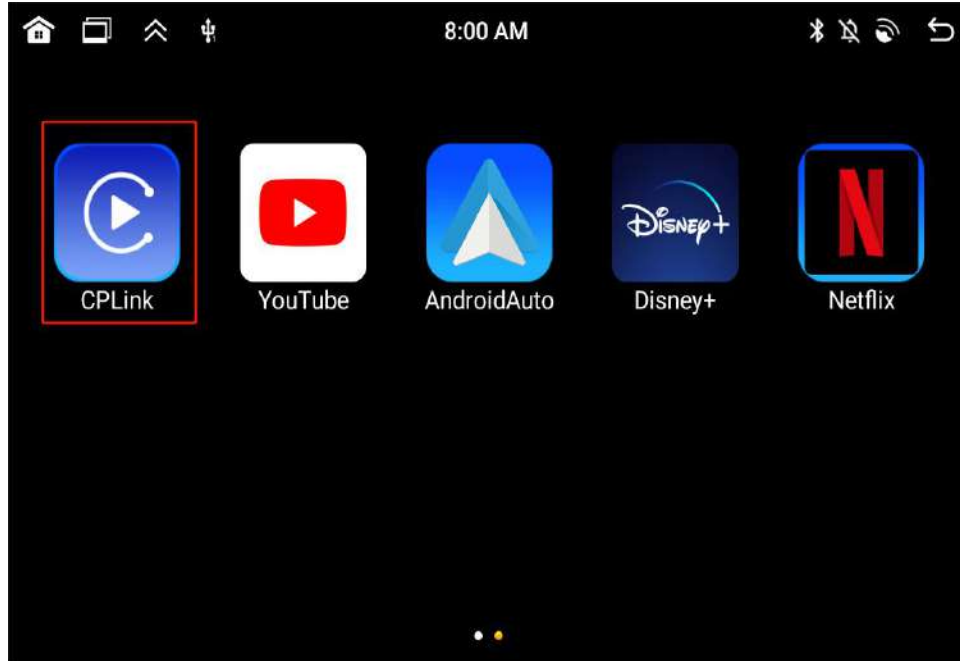
- More settings
1. System settings
 2. Language and input
 3. Date and time
 4. Floating menu assistant (etc.)



Application interface
Massive APPs to choose from



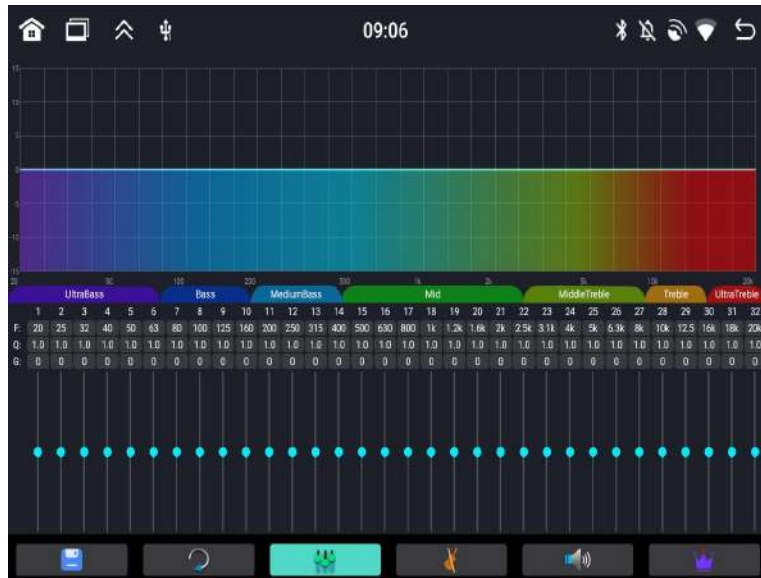
Direct entertainment,
comes with default
application APP



CarPlay connection help

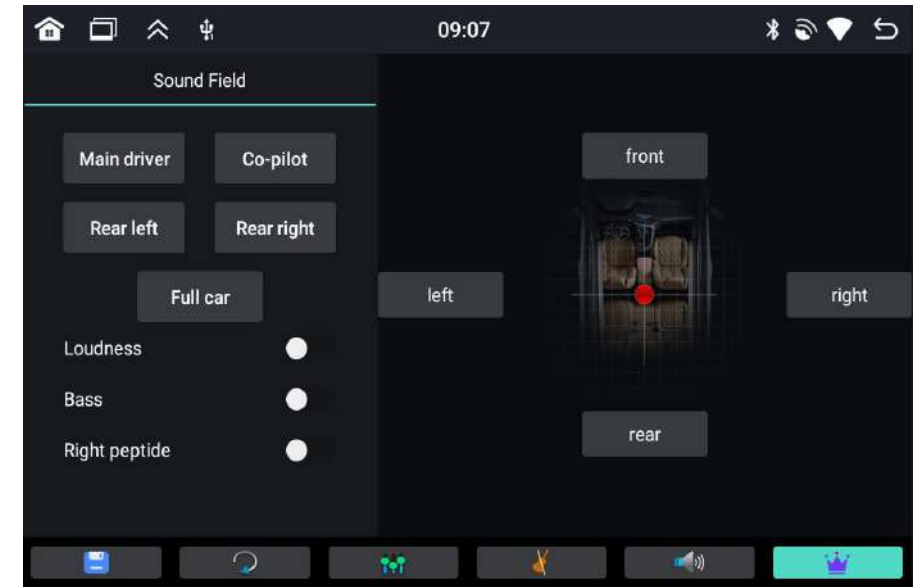
1. Open the Android interface. 2. Click CPL ink to enter the Carplay connection interface.
2. After turning on the Bluetooth of the mobile phone, search for the Bluetooth name "Android Blueandroid" on the machine and connect to the host.
3. Click the settings icon in the lower right corner of Carplay and turn on automatic connection. It will automatically connect to your phone the second time.

Model 3Y Highland Rear Smart Screen H86 Android Version - Function Introduction



Audio settings

1. Open the Android interface 1. Click Audio Settings to enter the audio settings interface.
2. There are corresponding sound effect adjustment functions in the column below the audio, which can be adjusted according to your own needs.
3. Adjustment after connecting the original car audio can also have a certain effect.



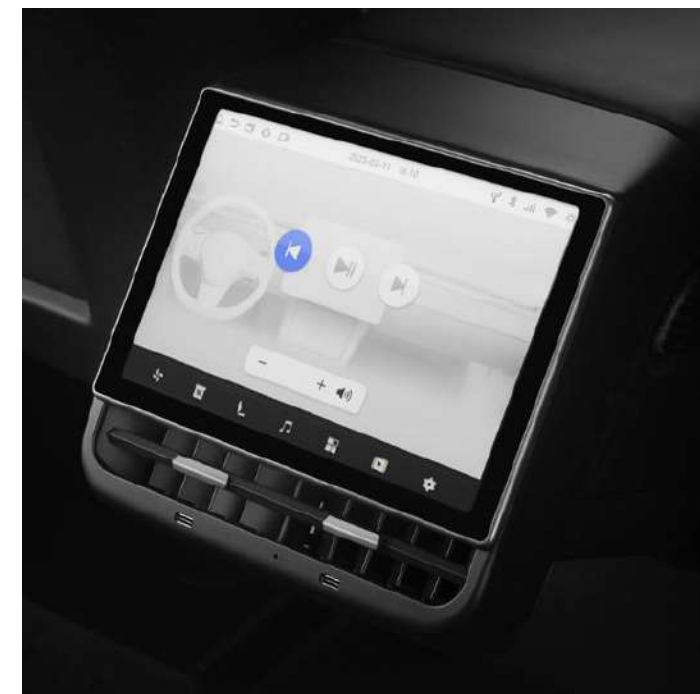


Type-c interface function
Left: Type-c is the data interface
Right: Type-c is a 15W fast charging interface



Settings page

1. Select left-hand drive or right-hand drive for vehicle model
2. Temperature unit switching
3. Time format switching



Sound output method

1. Built-in speaker (sound is given priority when not connected to the original car)
2. Bluetooth is connected to the original car, and the sound is output from the original car speaker.
3. Support wired Bluetooth headsets



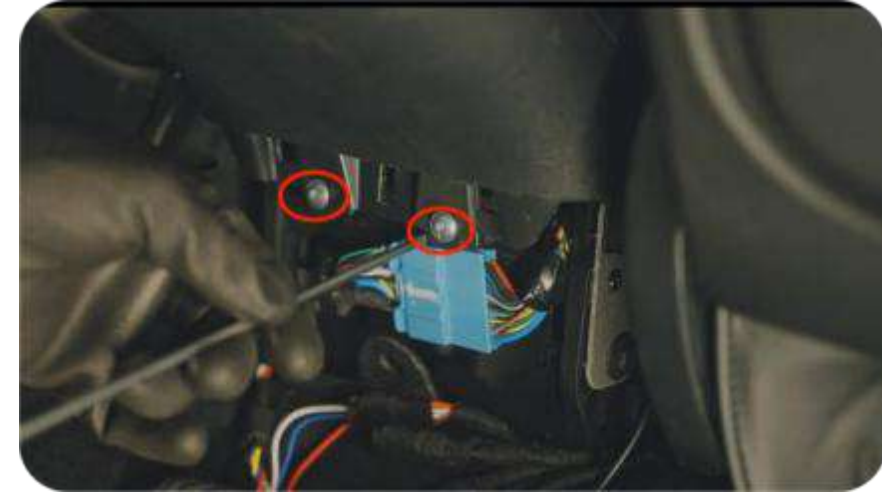
1. Remove the original rear air conditioning trim panel cover



2. Pull out the plug of the charging module, and connect the emergency plug to the charging module. Electrical module plug mating



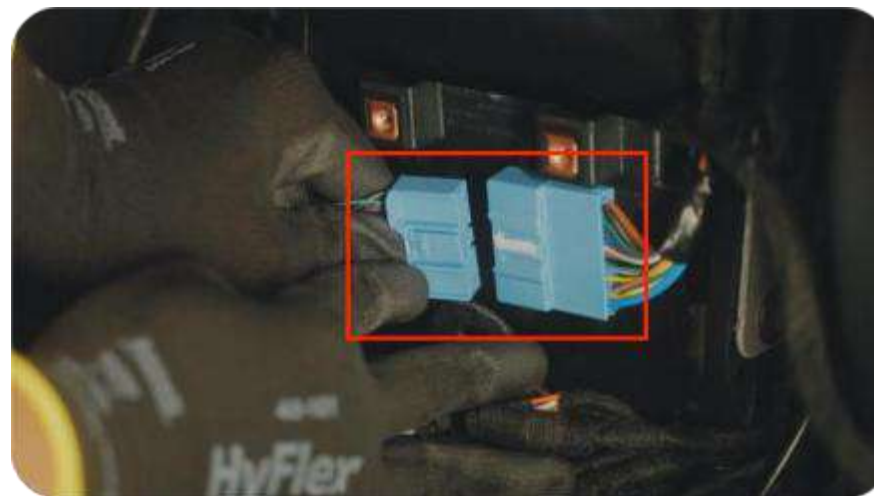
3. Use tools to remove the anti-kick trim panel at the bottom of the saddle.



4. unscrew these 2 fixing screws



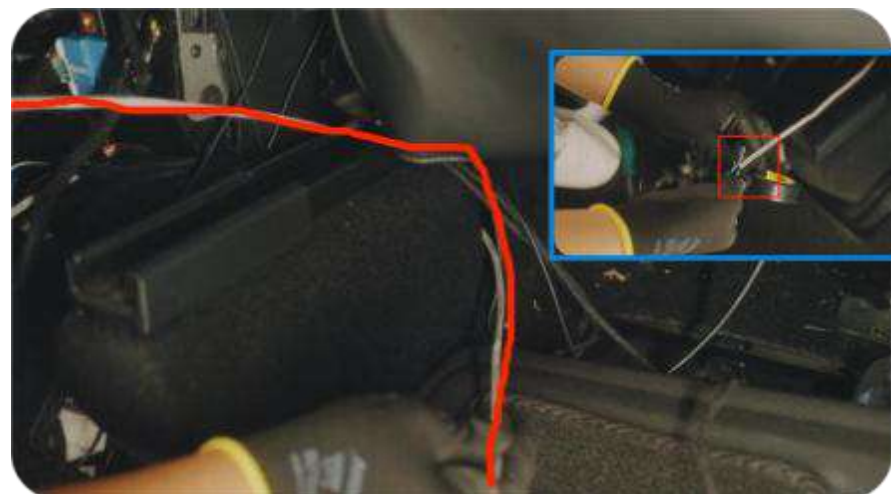
5. Remove the middle trim panel of the rear outlet of the air conditioner.



6. Unplug the original bus plug Bblue plug)

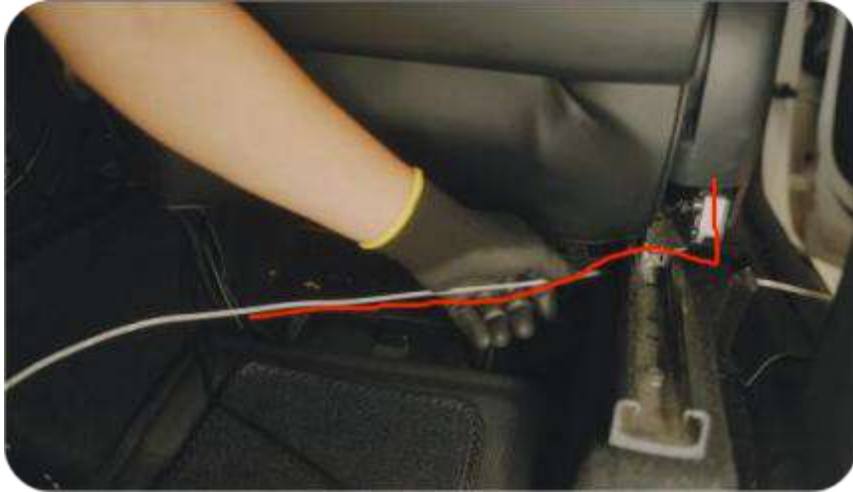


7. CANbus adapter plug and blue plug plug in together



8. After wrapping the passenger seat adjustment adapter cable with tape, Use the threading tool to thread the thread along the groove on the bottom of the seat.

Model 3Y Highland Rear Smart Screen H86 Android Version Installation Instructions (The same applies to the driver and passenger)



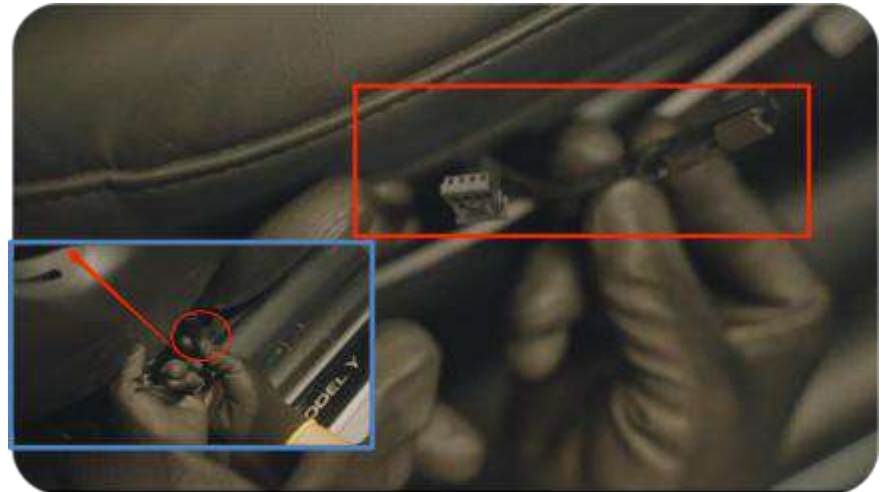
9. Same as step 8 , thread the wire harness to the seat adjustment Button



10. Use tools to remove the seat trim panel



11. Unplug the original car seat adjustment plug

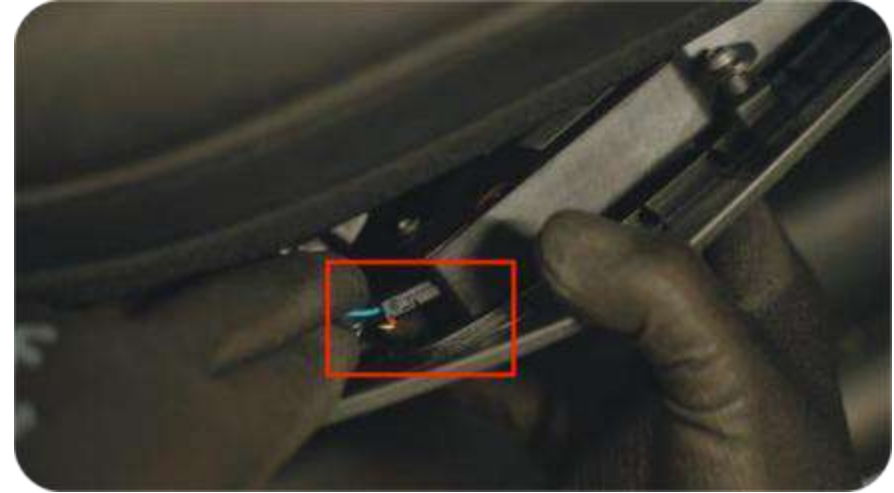


12. Thread the wiring harness above the seat adjustment plug

Model 3Y Highland Rear Smart Screen H86 Android Version Installation Instructions (The same applies to the driver and passenger)



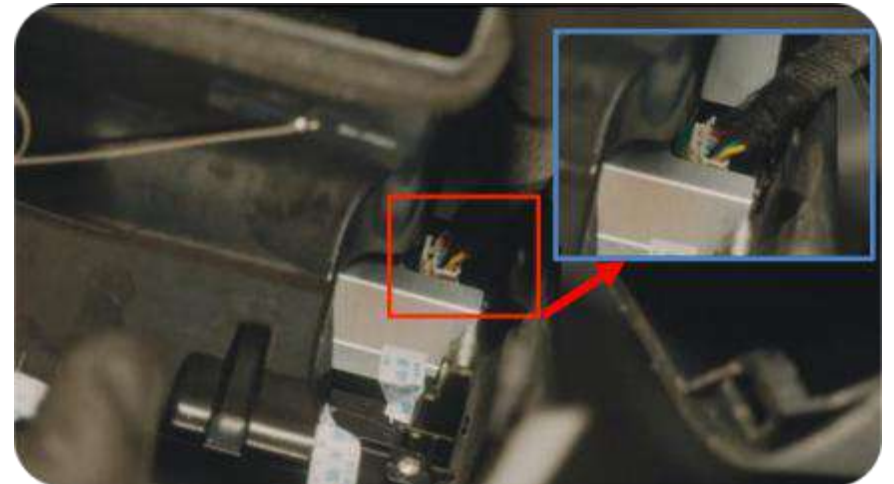
13. The adapter plug plugs into the original seat adjustment plug head



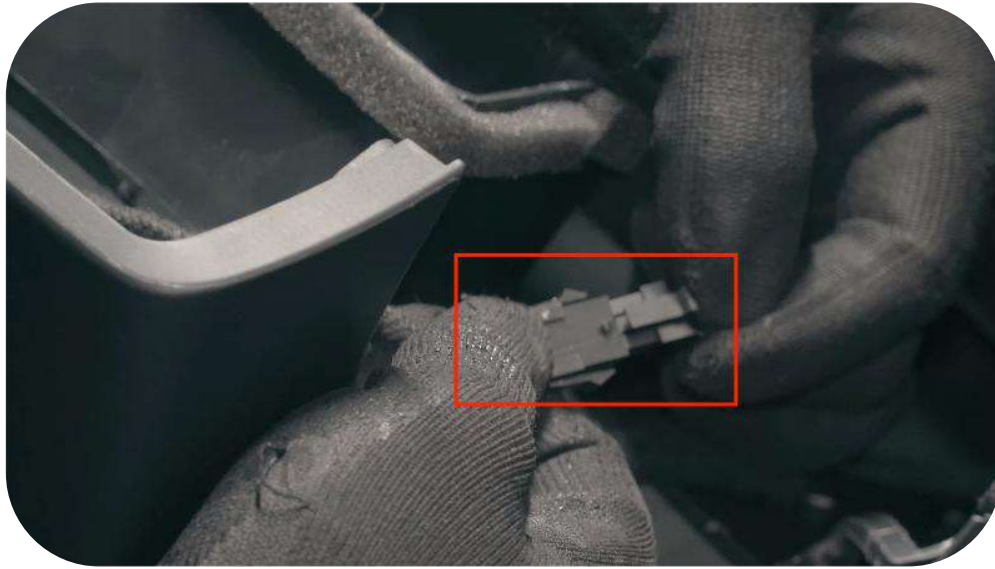
14. Another adapter plug is plugged into the original seat adjustment socket (The same applies to the main driver's seat adjustment adapter cable)



15. Align the correct position and press back



16. Insert the power plug into the screen socket



17. Plug in the power harness plug



18. Check whether all functions of the screen are normal
(See the installation video for details)



19. Just snap the screen back (During installation, you need to hold the bottom of the screen first and then the top of the buckle. You can watch the installation video to operate)

Model 3Y Renewed Rear Smart Screen H86 Android Version - Frequently Asked Questions Troubleshooting Guide

Fault	Reason	Solution
Black screen (the screen does not light up after installation)	The adapter wiring harness is not connected properly.	Re - plug
	After the host plug was unplugged, it was not plugged back within 5 minutes.	Connect the wiring harness, lock the car for 2 hours, keep the mobile phone and remote control key more than 20 meters away from the car, and check after 2 hours to see if the screen can be lit.
Bluetooth cannot connect	There is no connection to the corresponding host Bluetooth	Search again for correct Bluetooth connection
The passenger seat cannot be adjusted	The seat harness is not pulled	Reconnect the wiring harness
Rear air conditioner with no wind output	Air conditioning interface closed state	Click to turn on the air conditioner and adjust the fan speed
No sound output	Maybe the Bluetooth is not connected	The host reconnects to Bluetooth and then restarts the original car host.
Screen functions cannot be operated	Turn on the childproof lock	In the upper right corner of the screen, slide to hide SOD and turn off anti-player lock
Unable to read information from U disk	U disk plugged into wrong interface	The left side is the data reading interface, and the right side is the fast charging interface.
Can't turn on the screen after turning it off	Wrong way	