

Bridge Kitchen Faucet with Side Sprayer

Installation instruction



MB / BN / BG

CARE INSTRUCTIONS

Rinse the product with clear water. Dry the product with a soft cloth.

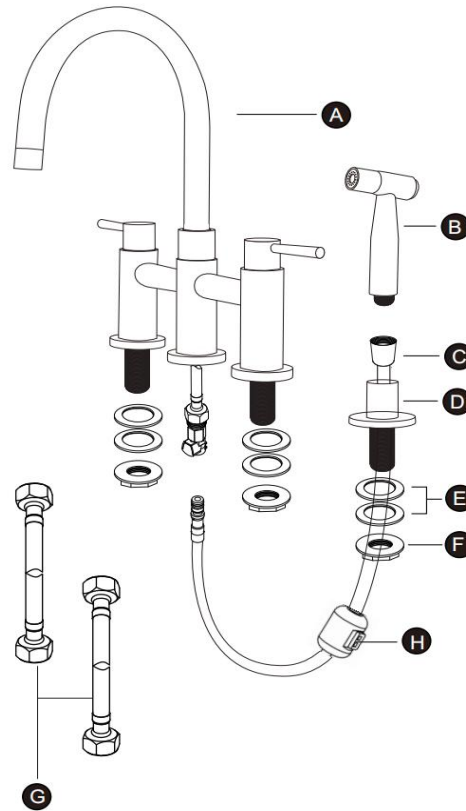
DO NOT:

Use abrasive cleansers, cloths, or paper towels. Use any cleaning agents containing acid, polish, wax, alcohol, ammonia, bleach, solvent or any other corrosive or harsh chemical cleansers.

RECOMMENDED TOOLS



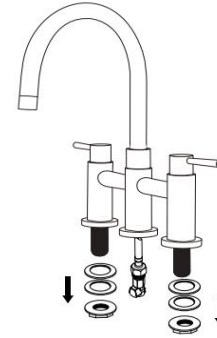
PARTS LIST



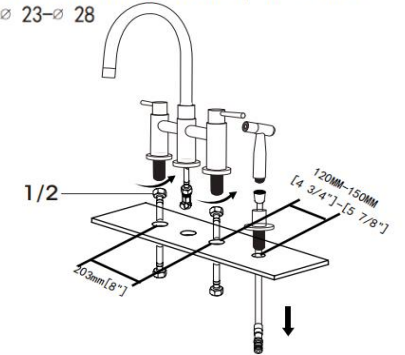
No.	Description
A	Faucet Body
B	Side Sprayer
C	Sprayer Hose
D	Sprayer Base
E	Rubber Washer
F	Mounting Nut
G	Cold / hot supply line
H	Gravity shot

INSTALLATION STEPS

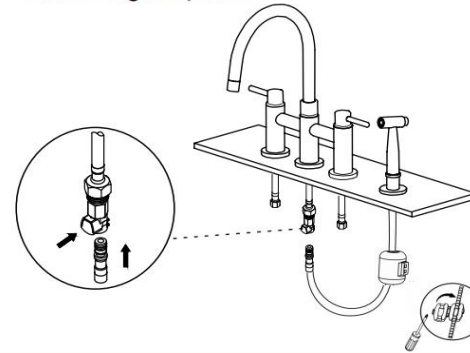
1 Demount the washer and mounting nut.



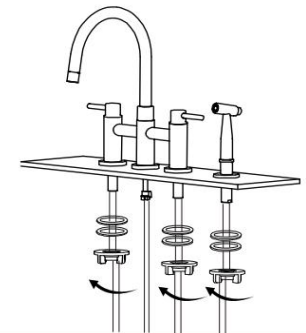
2 Connect the supply hose into the main water inlet hole.; Hole size \varnothing 23- \varnothing 28



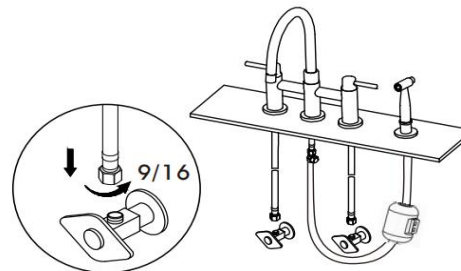
3 Connect the gravity hose to faucet body, install the gravity ball



4 Rotate the gasket and nut to lock faucet.



5 Connect the supply hose to Angle valve.



6 Unscrew the net nozzle and flush.

