



# Instruction Manual

## Rain Shower System



**Model:6630**



**Model:6603**

# CONTENT

---

<b>1.INSTALLATION CONDITION .....</b>	<b>P1</b>
<b>2.MODEL:6630 THREE FUNCTION SHOWER SET .....</b>	<b>P2</b>
<b>3.MODEL:6603 THREE FUNCTION SHOWER SET .....</b>	<b>P9</b>
<b>4.CLEAN AND MAINTENANCE .....</b>	<b>P16</b>
<b>5.IF A LARGE-SCALE CLEAN-UP IS NECESSARY ,FOLLOW THESE PROCEDURES .....</b>	<b>P16</b>

## ◆ INSTALLATION CONDITION



1.Refer to the 《Standard Part List》 when unpacking ,  
check all parts available .

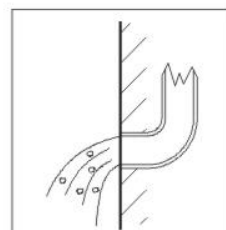
2.Do not disassemble mixer body by yourself.

3.Connect inlet hoses to supply valves.

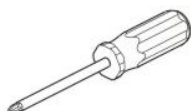
4.Make sure inlet pipes and supply valves have been  
installed and cleaned, also ensure no impurities in  
pipeline.

5.After installation , check all joints for leakages.

6.Suggest don't fit the faucet in the severely corrosive environments.

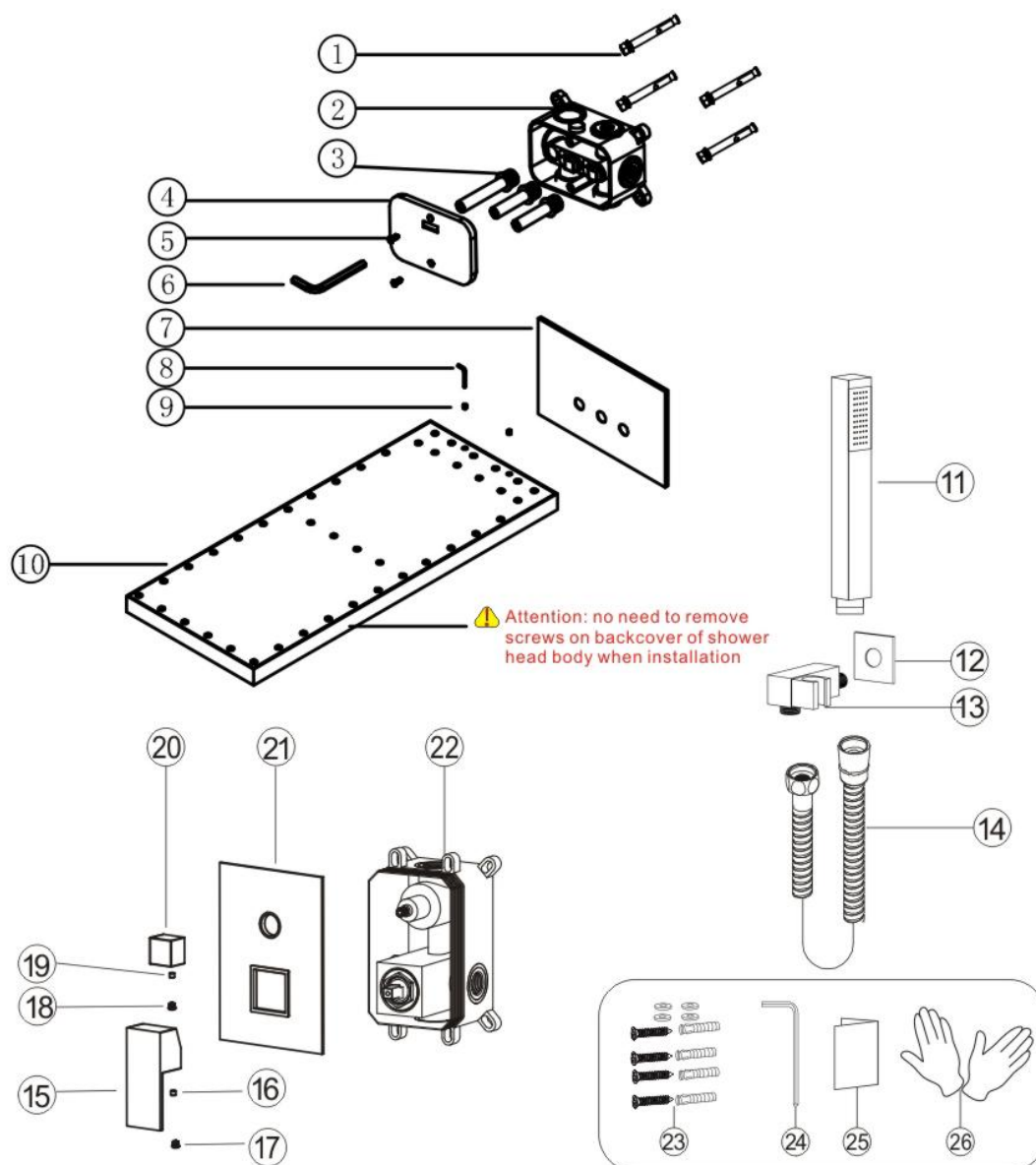


### YOU MAY NEED:



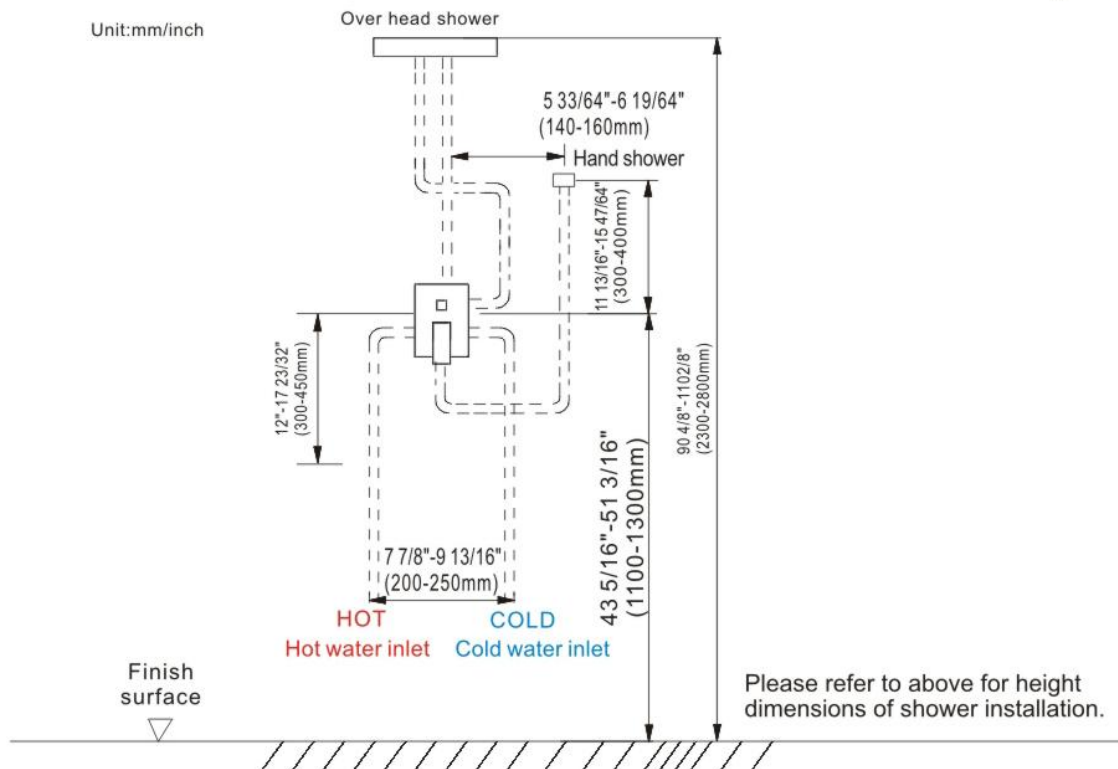
# ◆ Three Function Shower Set

Model 6630  
PRODUCT LIST

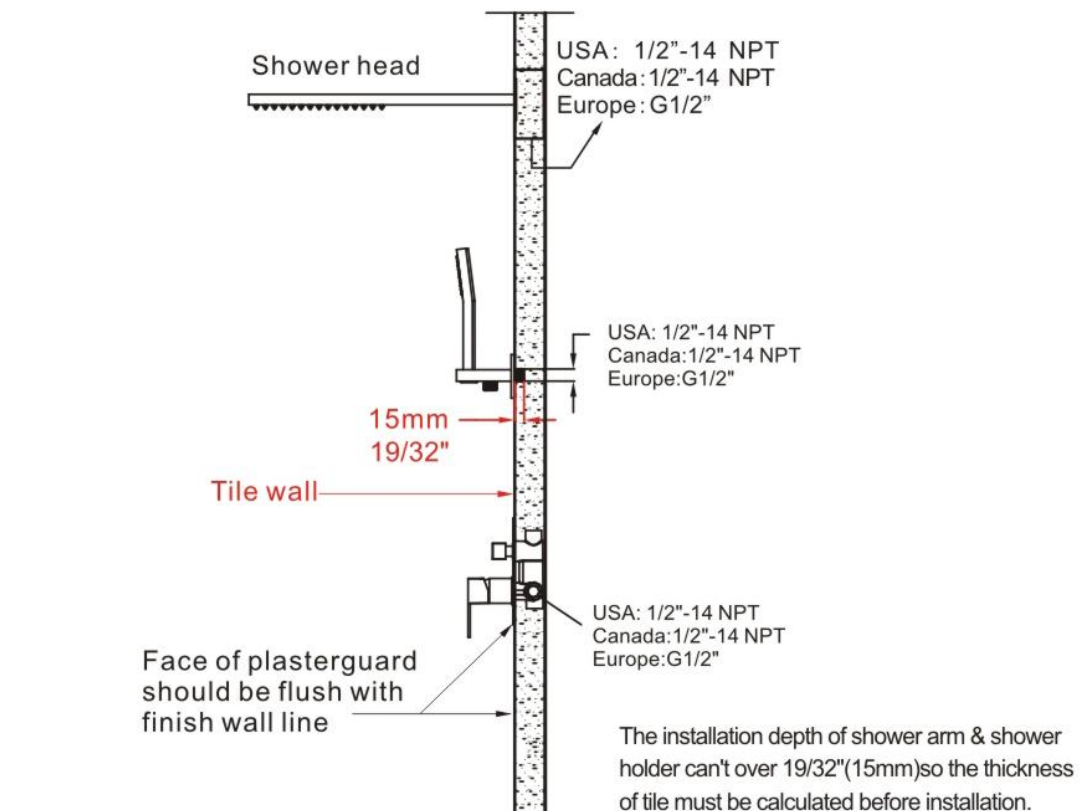


No.	Part name	Qty	No.	Part name	Qty	No.	Part name	Qty
1	Expansion screws	4	10	Shower head body	1	19	Water diverter screw	1
2	Inwall box	1	11	Shower hand	1	20	Water diverter	1
3	Water inlet	3	12	Holder cup	1	21	Panel	1
4	Cover	1	13	Hand shower holder	1	22	Main body	1
5	Screw	2	14	Shower hose	1	23	Body box fittings	4
6	S8 Allen key	1	15	Handle	1	24	Wrench	1
7	Flange	1	16	Handle screw	1	25	Instruction manual	1
8	Allen key 2.5	1	17	Handle cap	1	26	Gloves	2
9	M4 screw	2	18	Water diverter cap	1			

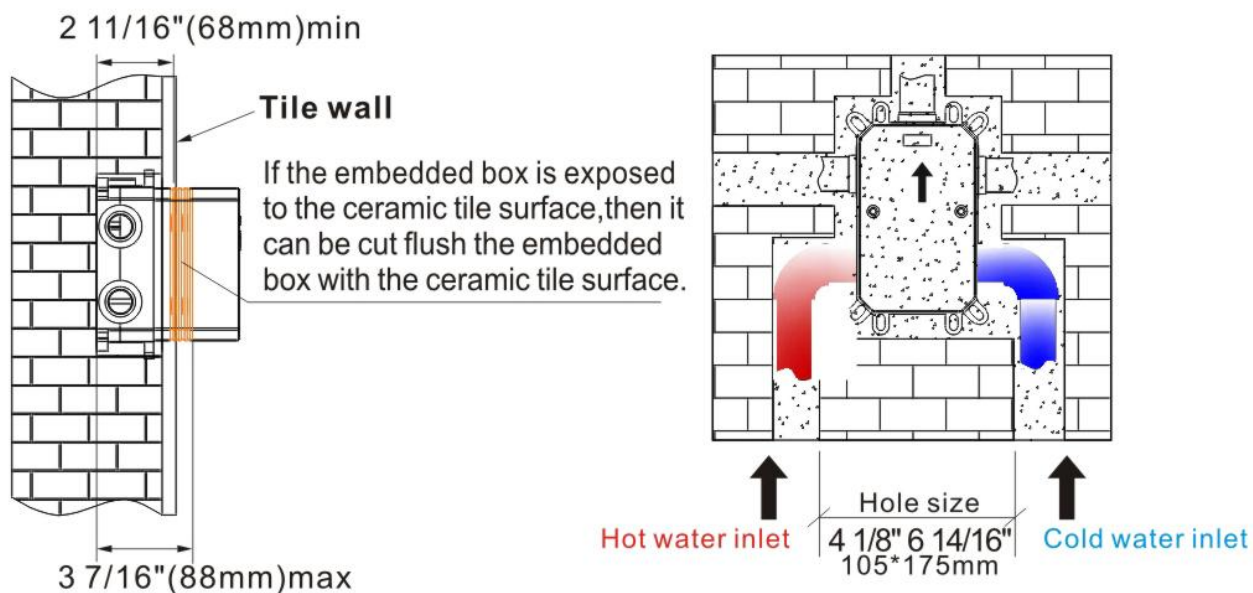
## ◆ Installation Dimensions of Embedded Pipes



## ◆ Installation Depth For Shower Arm & Shower Holder



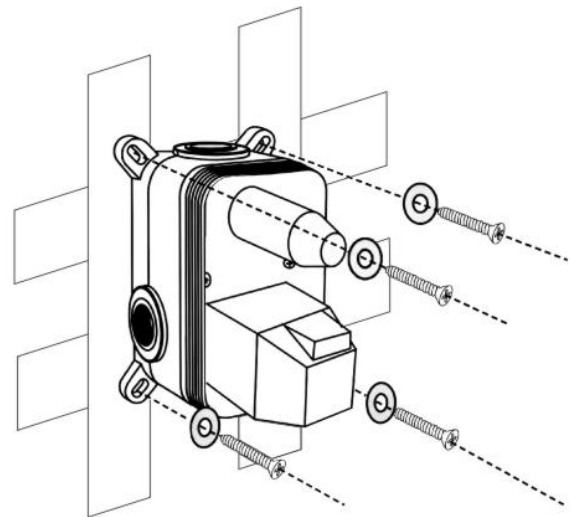
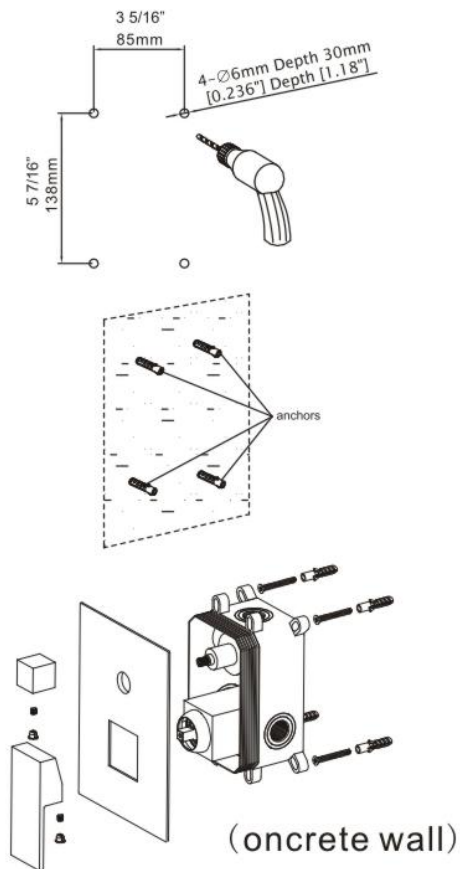
## ◆ Installation Depth of Main Body



Notice: The installation depth of main body should be no less than  $2 \frac{11}{16}" (68\text{mm})$  and no more than  $3 \frac{7}{16}" (88\text{mm})$ , including the thickness of tile. Otherwise, the panel cannot be installed.



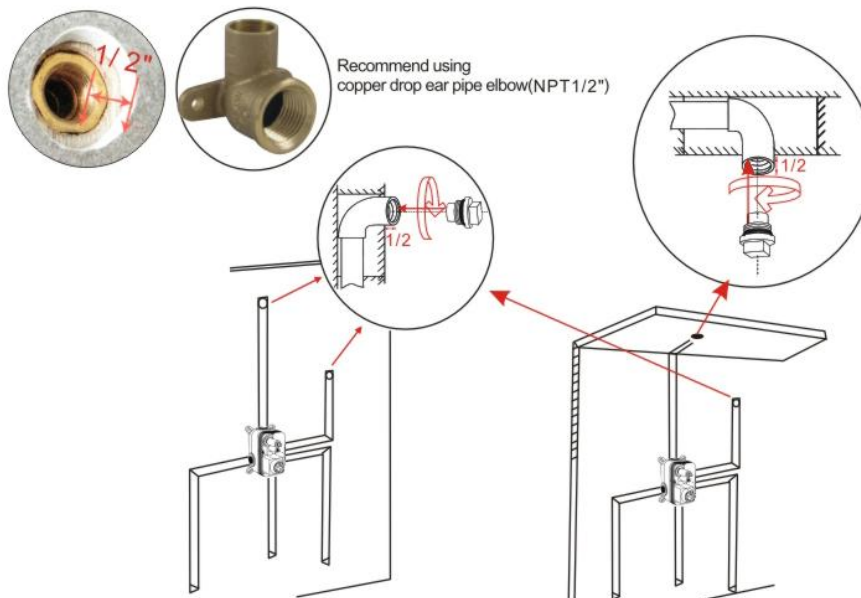
## ◆ Main body Valve Installation



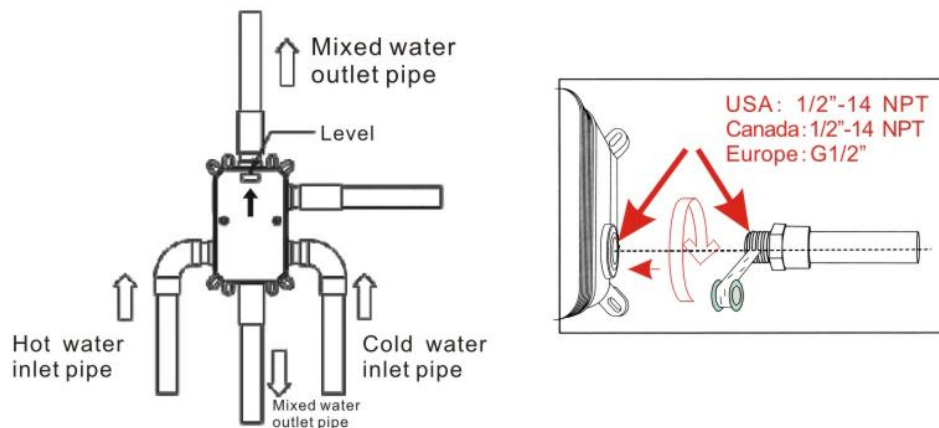
(wood wall)

1. Make marks according to the size of the main body valve, and then drill anchors into the wall. (oncrete wall)
  2. Lock main body to wood directly with screws.(wood wall)
- ▲ Please note that the levelmeter should be parallel with the wall, otherwise the panel cannot be installed.
3. Please fix the main body to the wall, remove the plastic protective cover and install panel, water diverter, screw and water diverter cap step by step.
  4. Install the handle with the screw and handle cap.

## ◆ Piping Installations Before Tiling



1. Recommend using Copper drop ear pipe elbow(NPT 1/2")  
 USA: 1/14NPT 2-Canada: 1/2"-14NPT Europe: G1/2"



1. Connect the water pipes as illustrations. Please make sure the mark ↑ is facing upward.
2. Before tiling, turn on the water and pull the shower handle to check for leakages.

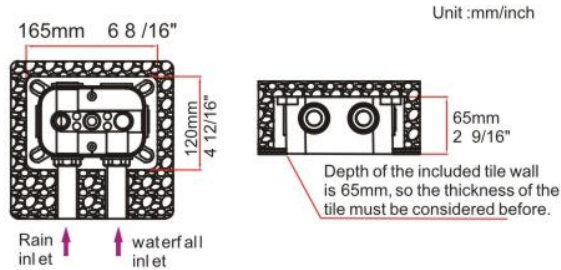


Warning: must install hot water and cold water inlet strictly as instructions.



## ◆ 22In Shower Head Installation

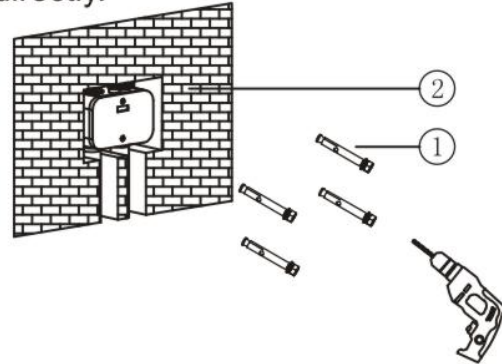
1. Digging wall according to following size, and connect rain and waterfall inlet correctly



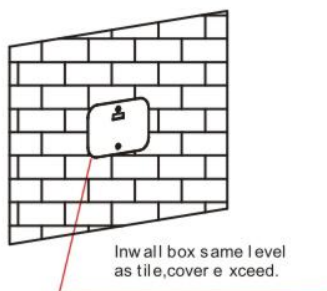
⚠ If the Inwall box is embedded too deep, the shower head will not be installed properly and it will cause water leakage and sag problems. Please pay special attention to the installation depth.

2. Lock Inwall box refer to level meter guarantee horizontal level and test leaking for 24 hours.

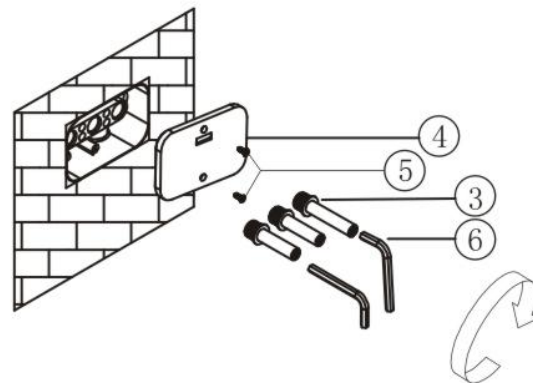
If it is the wood wall, can use screw to lock the embedded box into the wall directly.



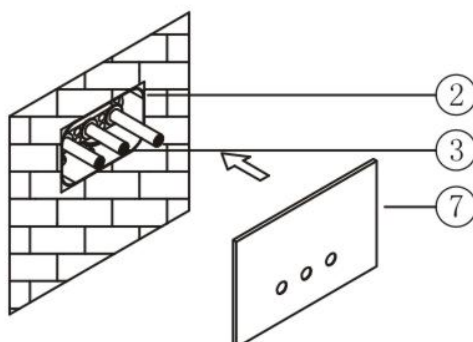
3. Remain inwall box in same level as wall after seal the tile and cover exceed wall.



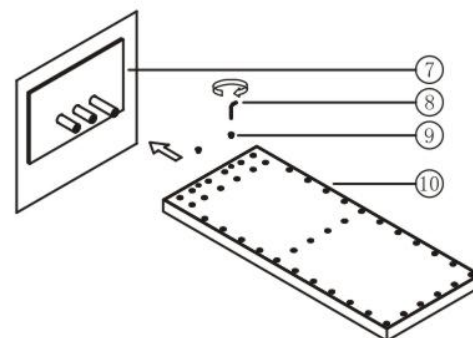
4. Install Shower head body. First remove box cover and plug, screw three water inlets into inwall box with S8 Allen Key. Longest role is support.



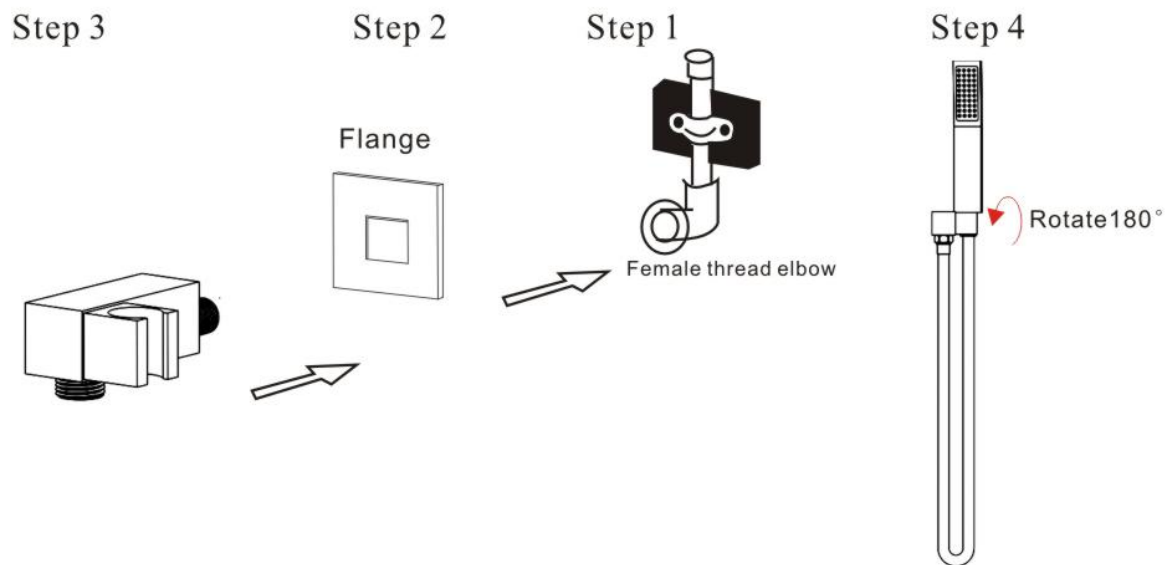
5. Install Flange as picture. Caution: do setp 4-5-6 to test horizontal and vertical position of shower head before wall seal to avoid any trouble of repair after wall seal.



6. Push shower head body into according water inlets, and tighten shower body by M4 screw with Allen key 2.5.



## ◆ Shower Holder Installation Install The Hand Show Holder

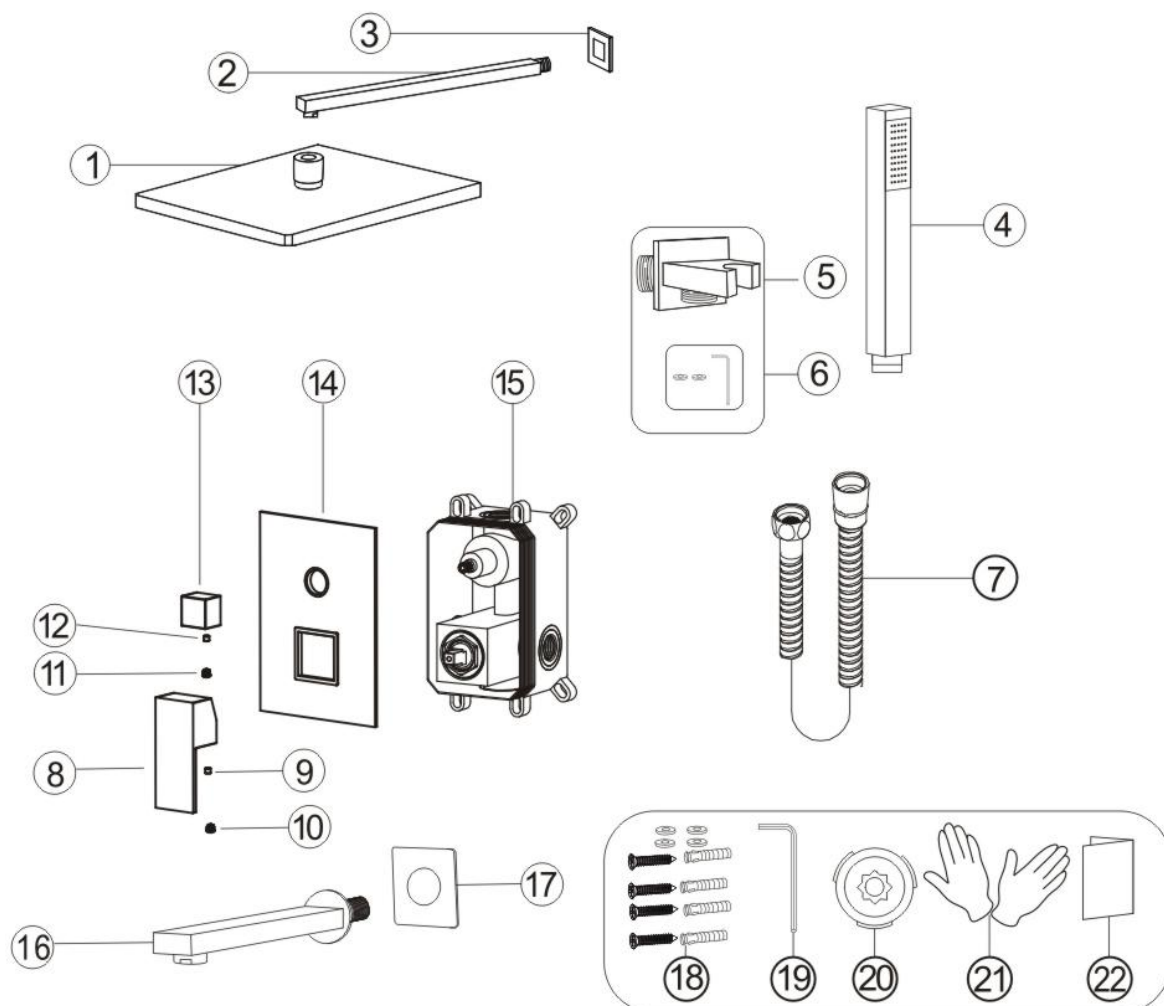


- Step1.Screw the thread into the water pipe inside the wall.  
Step2.Screw the hand shower holder with cover into the thread.  
Step3.Rotate and fix the body with the special-shaped wrench.  
Step4.Connect hand shower and the hose.

## ◆ Three Function Shower Set

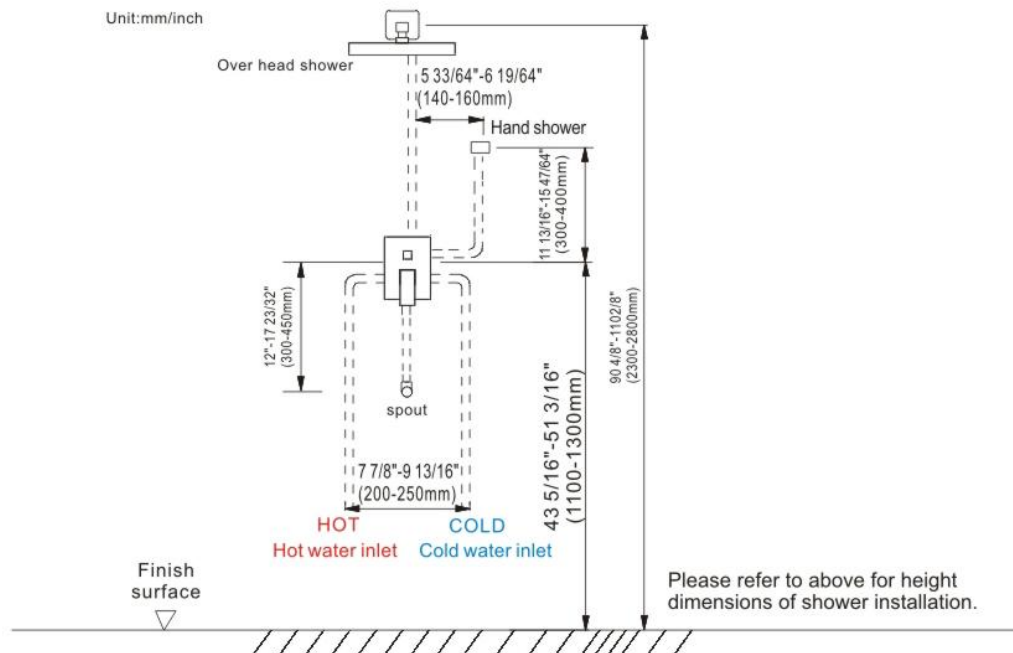
Model 6603

### PRODUCT LIST

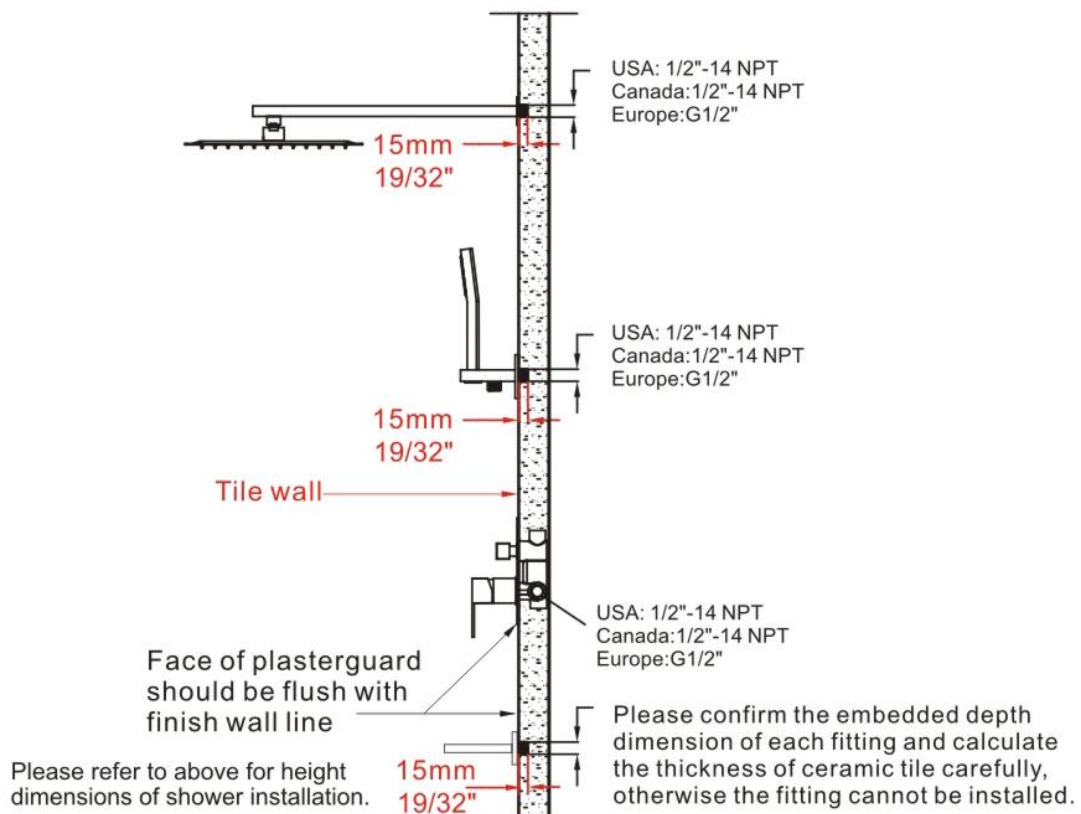


No.	Part name	Qty	No.	Part name	Qty
1	Shower head	1	13	Water diverter	1
2	Shower arm	1	14	Panel	1
3	Shower arm cover	1	15	Main body	1
4	Hand shower	1	16	Bathtub spout body	1
5	Hand shower holder	1	17	Bathtub spout panel	1
6	Holder parts	1	18	Body box fittings	4
7	Shower hose	1	19	Wrench	1
8	Handle	1	20	Water-saving film	1
9	Handle screw	1	21	Gloves	2
10	Handle cap	1	22	Instruction manual	1
11	Water diverter cap	1			
12	Water diverter screw	1			

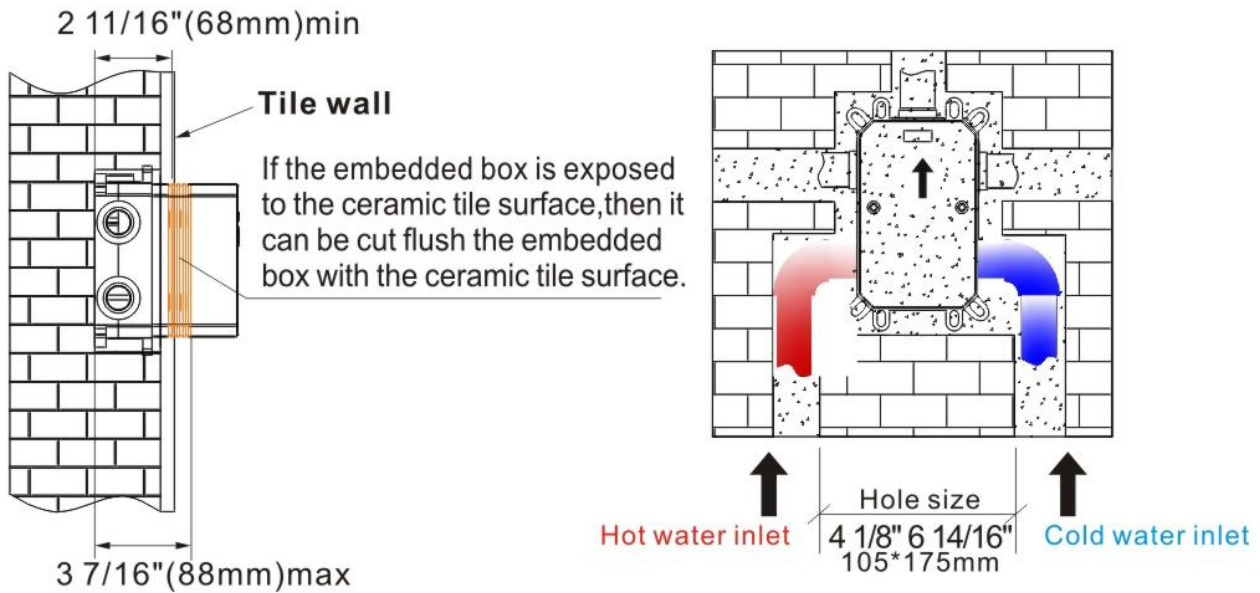
## ◆ Installation Dimensions of Embedded Pipes



## ◆ Installation Depth For Shower Arm & Shower Holder



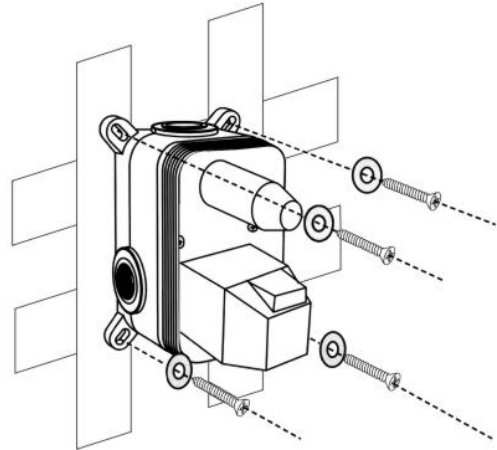
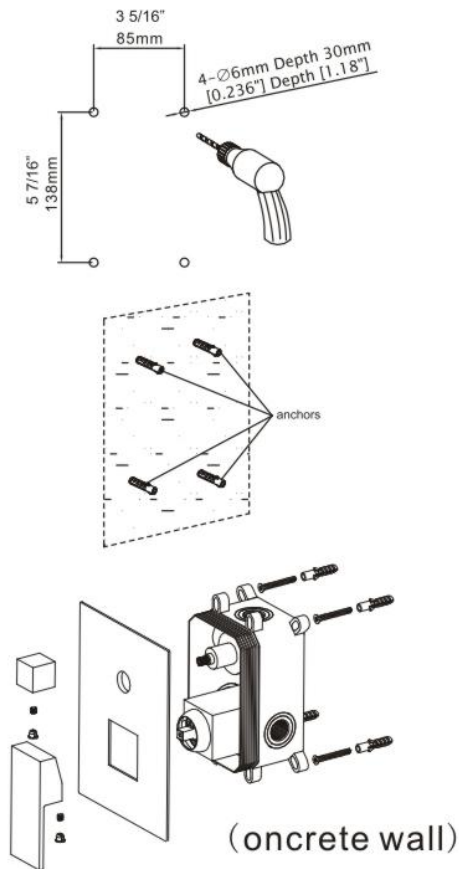
## ◆ Installation Depth of Main Body



Notice: The installation depth of main body should be no less than 2 11/16" (68mm) and no more than 3 7/16" (88mm), including the thickness of tile. Otherwise, the panel cannot be installed.



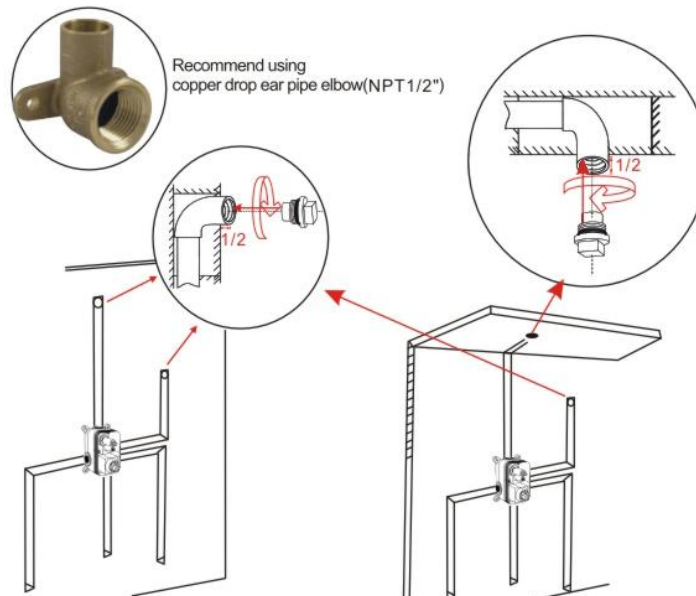
## ◆ Main body Valve Installation



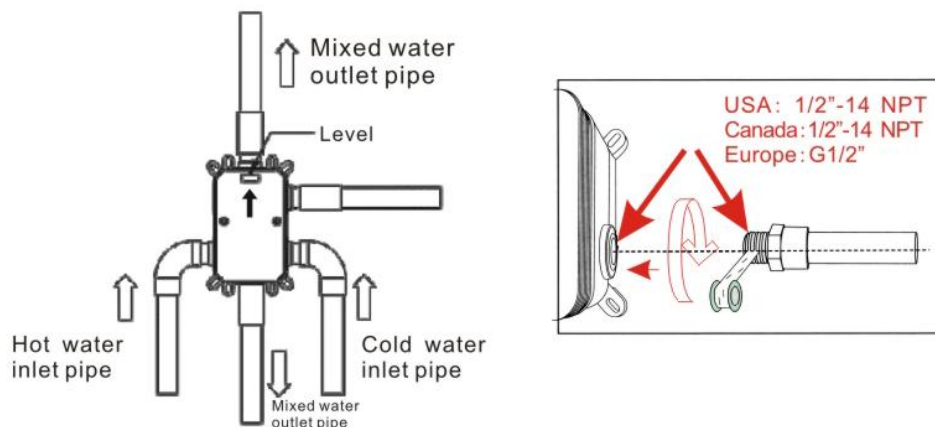
1. Make marks according to the size of the main body valve, and then drill anchors into the wall. (oncrete wall)
  2. Lock main body to wood directly with screws.(wood wall)
- ▲ Please note that the levelmeter should be parallel with the wall, otherwise the panel cannot be installed.
3. Please fix the main body to the wall, remove the plastic protective cover and install panel, water diverter, screw and water diverter cap step by step.
  4. Install the handle with the screw and handle cap.



## ◆ Piping Installations Before Tiling



1. Recommend using Copper drop ear pipe elbow(NPT 1/2")  
USA: 1/14NPT 2-Canada: 1/2"-14NPT Europe: G1/2"

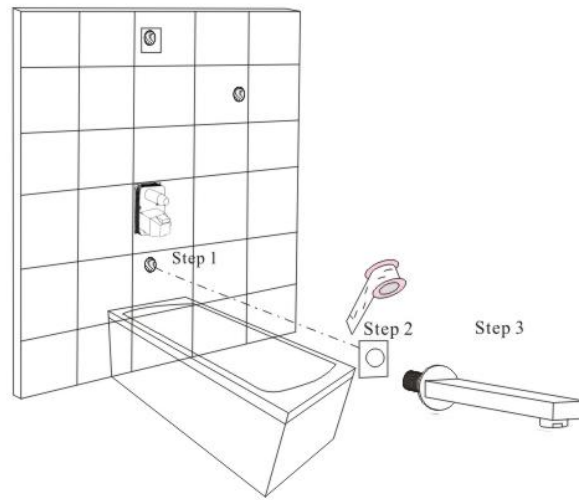


1. Connect the water pipes as illustrations. Please make sure the mark ↑ is facing upward.
2. Before tiling, turn on the water and pull the shower handle to check for leakages.



Warning: must install hot water and cold water inlet strictly as instructions.

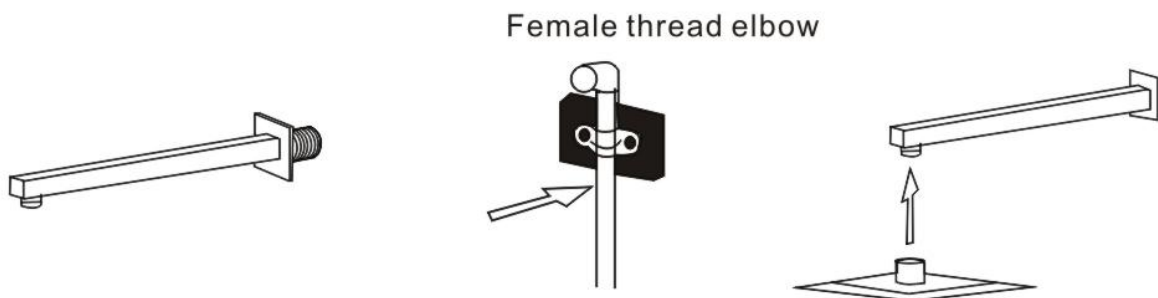
## ◆ Tub Spout Installation



Step 1. Put the bathtub spout panel on the top of the bathtub spout body.

Step 2. Screw the bathtub spout body into the thread.

## ◆ Shower Head and Shower Arm Installation

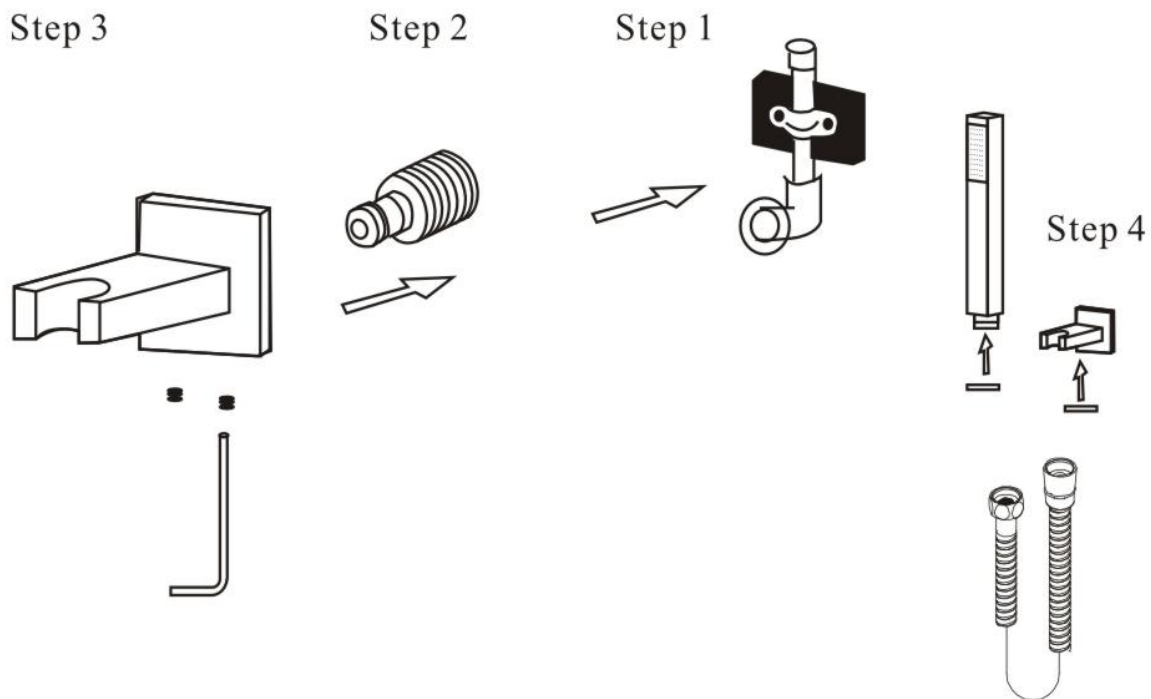


1. Put the bathtub spout panel on the top of the bathtub spout.

2. Fix shower head onto shower arm, and apply tape to pipe threads on both ends.

3. Do not overtighten shower head. It is 360° swivel connection.

## ♦ Hand Shower Holder Installation



Step 1. Screw the thread into the water pipe inside the wall.

Step 2. Screw the hand shower holder with cover into the thread.

Step 3. Rotate and fix the holder with the wrench.

Step 4. Connect hand shower and the hose.

## ◆ CARE AND MAINTENANCE

In order to keep the mixer surface bright , please clean the mixer regularly.

Rinse faucet with clean water and wipe with soft cotton cloth.

Avoid suing cleaning powder , harsh cleaning chemicals, brushes, and cloth with coarse surface to prevent scratching and corrosion.

Do not use acid cleaner to clean the faucet as it may cause surface corrosion of the faucet. If the faucet comes into contact with harmful acid substances, please rinse it with water immediately.



---

### ◆ IF A LARGE-SCALE CLEAN-UP IS NECESSARY, FOLLOW THESE PROCEDURES:

1: Use clean water and soft cloth to remove dirt on the surface as much as possible.

2: Use one of the following cleaners to remove dirt on the surface

Mild liquid cleaner.

Colorless glass cleaner, powder cleaner which does not have abrasive function and can be dissolved completely.

Polish liquid which does not have abrasive function.

3: After cleaning, remove the cleansing agent with clean water completely and wipe with soft cotton cloth.

Website:[www.casainc.com](http://www.casainc.com)

Contact Phone Number:888-257-3857

Service Contact:[service@casainc.com](mailto:service@casainc.com)