

SOLID SURFACE BATHTUB INSTRUCTION



CA-S06GW-59、 CA-S06GW-67
CA-S12MW-69、 CA-S18MW-71、 CA-S19MW-67
CA-S349MBW-67、 CA-S350MBW-59、 CA-S351MW-59
CA-S351MW-67、 CA-S355GW-59、 CA-S358GW-67

Instruction Manual

Important

- Please unwrap the bath and check it carefully to ensure it has not been damaged in handling or transport.
- Please check that all parts have been supplied.(Bathtub*1; Drain*1; Drain pipe*1; Scouring pad*1; Sand paper*1)
- Store the bath in a safe place until you begin installation to avoid damage.
- Assemble bath on a mat to protect against damage to bath surface.
- No claims for damages or blemishes will be accepted once the bath has been installed.
- This product requires a two person lift – use proper lifting techniques.
- We recommend that you do not remove your old bath until you have unpacked and inspected the new one. Please contact your local store if you have any concerns.
- Any installation should be carried out by a qualified tradesman with knowledge of statutory plumbing requirements in your area.
- This installation guide does not include details of waste connection; the final decision about installation of waste connections should be taken by a suitably qualified person.

Care and Maintenance

It may be possible to polish very fine scratches away without using abrasive papers: scrubbing gently with a soft brush or plastic pad (not metal scouring) and a mildy abrasive cream cleaner. Afterwards scrub the whole area with plenty of clean water and re-polish as before.

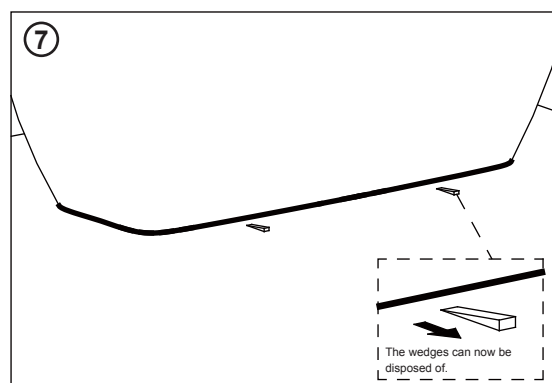
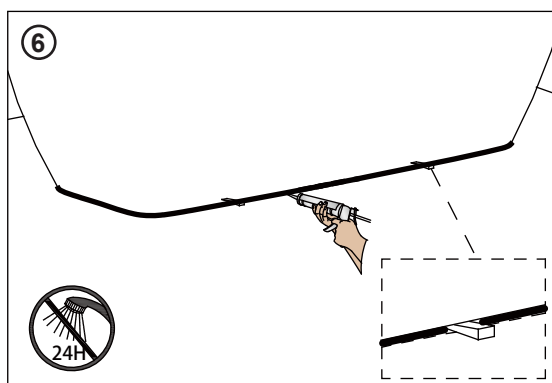
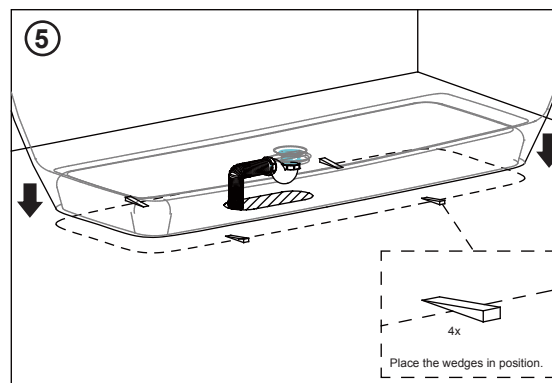
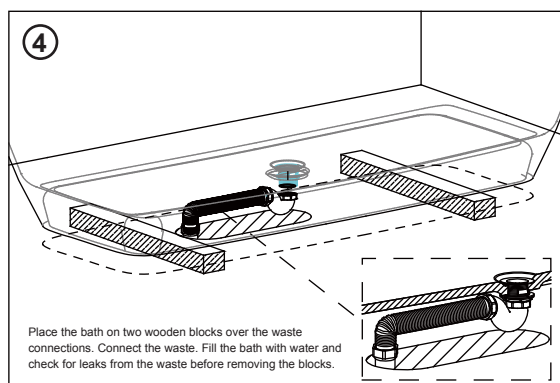
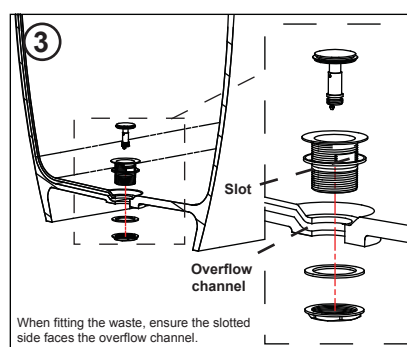
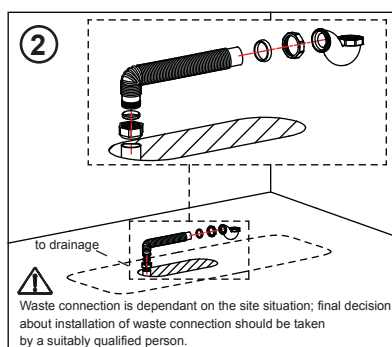
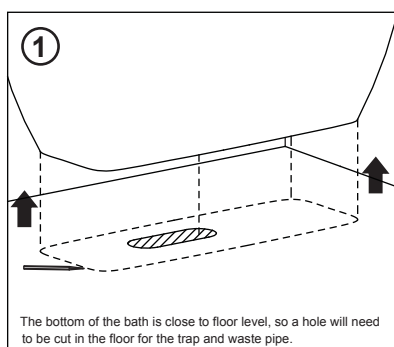
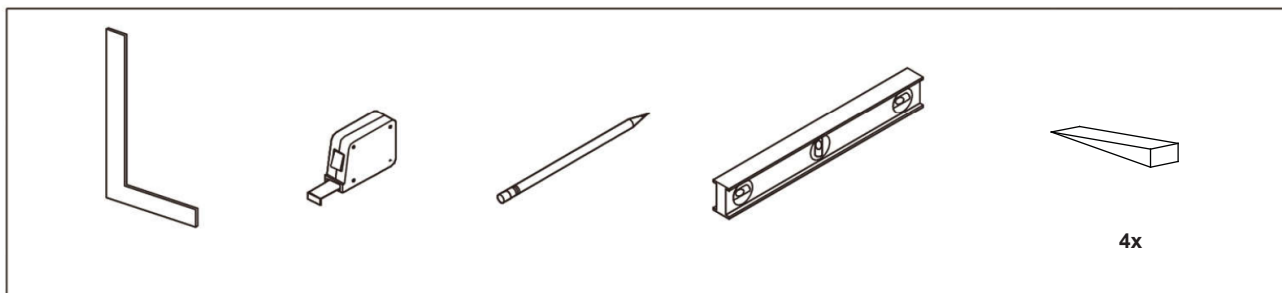
Glosh Finish

1. Clean the surface with water, making sure no dust remains.
2. Use 800 sandpaper to polish the surface in focus with water.
3. Use 1500 sandpaper to polish the surface with water to gain a smooth surface.
4. Use 2000 sandpaper to polish the surface with water to gain a smoother surface
5. Wipe up the water with clean and dry cloth.
6. Polish with G3 wax.
7. Wipe up the remaining wax with a clean and dry cloth.

Matte Finish

1. Clean the surface with water, making sure no dust remains.
2. Use 800 sandpaper to polish the surface in focus with water to gain a smooth surface and matte finish.
3. Wipe up the water with clean and dry cloth.

Need Tools:



HOW TO MAINTAIN SOLID SURFACE



1. Water stain, blot

- Clean with damp cloth and wipe dry.
- Most Dirt & Residue: Use soapy water or ammonia based cleaner, rinse and wipe dry.
- If residue persists, repeat process. If residue still persists, please see directions for removing scratches.
- Occasionally wipe surface with a household bleach dilution (50 parts water/1 part bleach). Rinse basin or bathtub thoroughly with water and wipe dry.

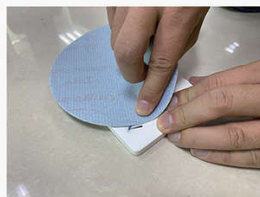


2. Scratch, stubborn stain

- In most cases stone resin can be repaired if damaged. However, be sure to follow these steps to prevent any permanent damage to the stone resin.
- 1. Avoid exposing stone resin to strong chemicals, such as nail polish, nail polish remover, hair dyes etc. If contact occurs, quickly flush the surface with water.
- 2. Do not cut directly on solid surfaces.
- 3. Boiling water alone will not damage your stone resin basin. However, running your faucet while pouring boiling water into your basin will damage it.

Because the beauty of stone resin goes all the way through, stone resin is completely renewable. You can remove minor cuts and scratches by following these instructions.

1. Begin with a fine grit sanding pad to remove the scratch (approximately 400-600 grit). Rub over scratch in a straight line (not circular motion) to remove it. Periodically switch rubbing direction 90°. Be sure the entire scratch is removed and shape appropriately to match the surrounding area. If this first step takes too long, try the next heaviest grit sanding pad. To minimize dust during sanding, wet the surface. Rinse pad periodically to clean residue.



2. Clean surface with water. Select the next finest grit until desired gloss level is achieved. For matte, you should be ending at about 600 grit. For matte gelcoat, you should end at 1000 grit. For glossy you should end at about 2000-3000 grit.