

DESCRIPTION

- Thermostatic Shower Column Set
- Brass Construction



STANDARDS

- Third party certified to meet ASME A112.18.1 all applicable requirements referenced therein

Important

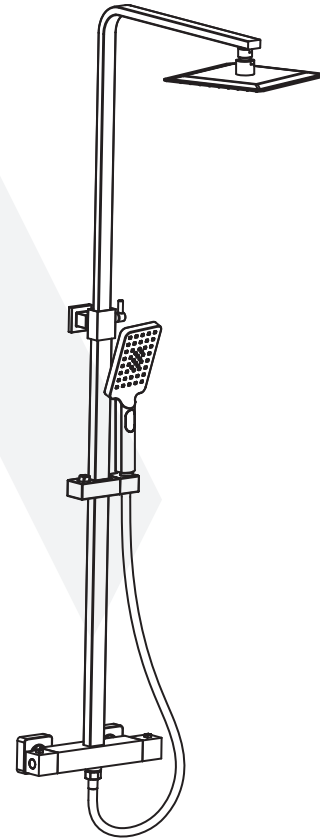
IMPORTANT

1. Please check that all components are present.
2. Before installation ensure that all feed lines are clear of debris and on/off valve is present.
3. Ensure water pressure is between 20-125 PSI (includes combination of hot and cold feed lines).
4. Pictures in the manual are general in content and may not represent exactly your purchased faucet. If you are having difficulties please contact a professional plumber.
5. If you will be away from home for an extended period you should shut off the main water supply.
6. Please insure that to make a wash for all water pipe before installation to insure no impurity inside.
7. When you need to welding the shower valve to the water pipe of the valve, please remember to take out the cartridge and any seal parts of the valve. When finish welding, need to wait for body of the valve cool down and then install the cartridge and the seal parts.
8. Need to used the 11-13N.m power to lock the cartridge.

All valve have the pass the the air testing and pressure testing before ship out. If request presssure testing before installation, Must under the guide of the professional Plumber with license. And air pressure do not over 125PSI. If you want to the Brust testing over 50±2PSI, you need to changed a new cartridge for normal using.



MONDAWE
PICK YOUR FAVORITE



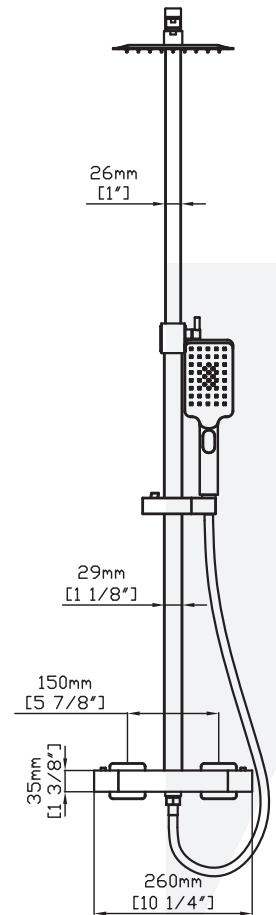
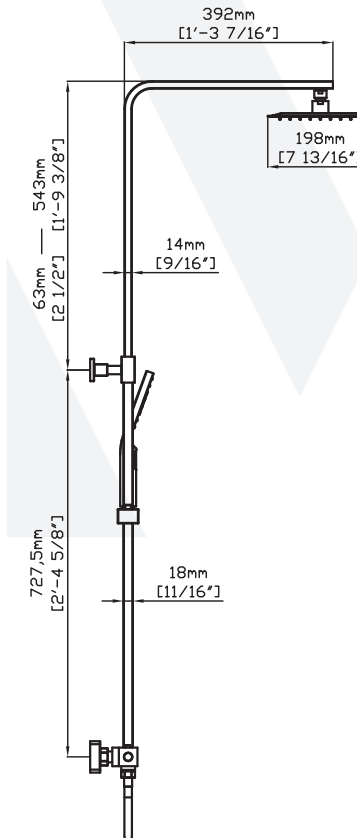
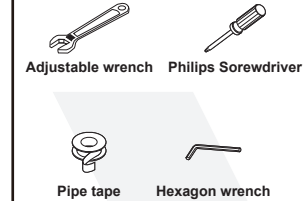
TEL:(720)805-3223

Get More Help by sending emails at service@mondawe.com

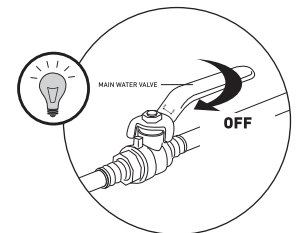
You can also view more products at <https://mondawe.com/>

Technical drawing

RECOMMENDED TOOLS



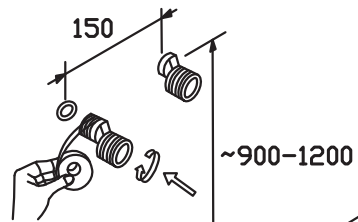
Before you begin



Note: Dimensions are for reference only.
Detailed information is in accordance with the final product.

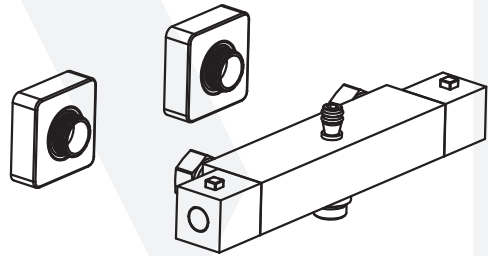
Installation steps

1



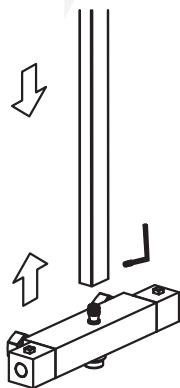
1. As shown, install the accessories and attach the tape.

2



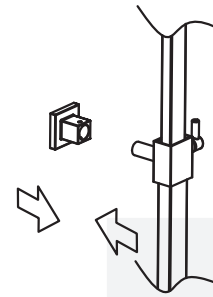
2. Install the main body and rubber pad.

3



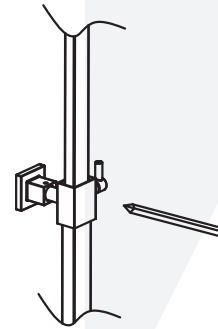
3. Install the riser in the faucet, tighten the screw.

4



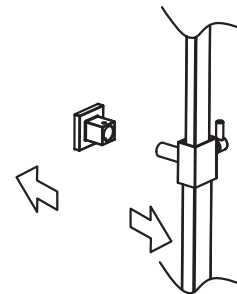
4. Install the mounting piece on the shower arm.

5



5. Make sure the riser is level, mark the position of the screw holes.

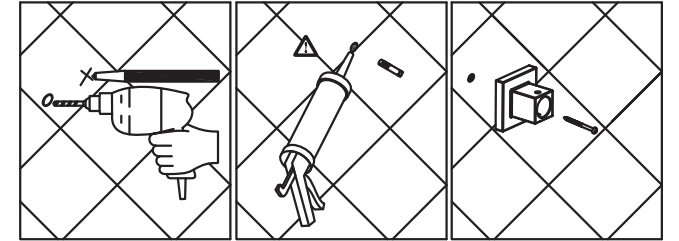
6



6. Remove the riser and the mounting piece.

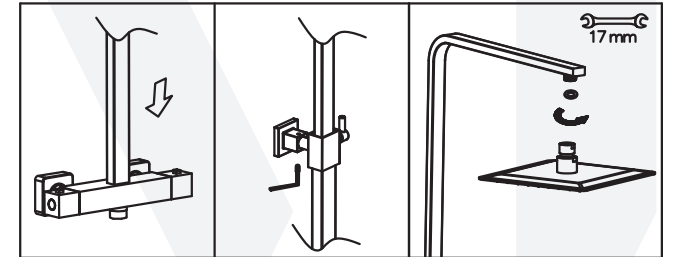
Installation steps

7



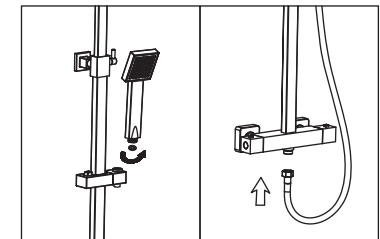
7. Drill the screw holes and install the anchors. Install the mounting piece and mounting piece seal.

8



8. Install the riser on the faucet, tighten the screw. Install the shower rain head.

9



9. Place the hose washer in the short hose end connection. Connect this end of the hose to the faucet. Place the screen washer in the long hose end connection. Install the handshower on this end of the hose. Rest the handshower in the holder.