

User Manual



AM-ZNH-02-26

PACKING LIST

1.Main body of E-bike



2.Battery

3.Front Wheel



4.Quick Release
For front wheel



5.Front Fender



6.Carrier



7.Pedals



8.Saddle with Seat post
& Reflector



9.Gloves
(black or white color)



10.Screw Pack



11.Tools Set



12.Charger



1. Warranty conditions

Electrical bike warrants this product to be in good working order during the warranty period. This warranty is valid only if proof of purchase is shown in the warranty service request.

The product is intended primarily for use by consumers, which is the basis of business conduct the acquired products are subsequently granted in these terms limited warranty.

★★Warranty Period★★

In accordance with the terms of the guarantee electrical bike :

- For consumers 12 months warranty.
- For companies and institutions 6 months warranty.

Electrical bike warranty service on a centralized basis through its own service centers.

News for more information and instructions for easy warranty service connection can be found at Amazonusa@saneagle.com

★★Exclusions and limitations★★

The warranty covers only in material and quality of the product. Granted to the product limited warranty does not cover maintenance and cost estimates if:

- The error is caused by unlawful processing of instructions.
- This product has been damaged by any man-made factors, mechanical stress or any other product from the outside.
- The error is caused by an accident, injury or any other warranty issuer's sphere of influence .Therefore outside a reason.
- The error is caused by the normal from wider use of or may be considered normal wear and tear. The warranty does not cover the product includes accessories, batteries or software may be delivered. Electrical bike will not be liable for any use of the product or the product of the error caused by direct or indirect costs unless otherwise stipulated by mandatory law.

Safe disposal of the product

The appliance and it's accessories must not be disposed of with normal household waste at the end of its life cycle.

2. ★★Safety Instructions★★

- Read the instruction manual thoroughly and follow the safety instructions in particular very carefully before the use of bicycles.
- Always obey traffic regulations.
- Do not give up the wheel to a person who is not familiar with the bike and operating instructions before riding.
- Wear a bicycle helmet whenever riding a bicycle.
- Check the bicycle brakes before each use, and keep in mind that the braking distance is extended wet / icy conditions.
- Check your bicycle's tire pressure at regular intervals. Having the correct tire inflation pressure is 3.5 bar. Incorrect tire pressure can lead to tire damage and shorten operating distance significantly.

2.1 Electrical Safety

★★CAUTION!★★

- Keep electrical appliances out of the reach of children.
- To avoid injury, use only the provided bike included charger to charge the battery.

Using the wrong charger battery may lead to an explosion and cause personal injury and property damage.

- Use only batteries approved for this product and accessories. Use of supplies from third parties with this wheel can result in fire, electrical shock, or personal injury.
- Do not expose the wheel electrical equipment to moisture, water or other liquids. However, if electrical appliances are exposed to water, disconnect the charger from the wall outlet immediately and deliver damaged parts service center for resellers for review.
- Do not expose the battery to fire and keep it away from hot heat sources. Risk of explosion!
- Unplug the charger from the wall outlet when not in use.
- Remove the charger by pulling the plug, not the cord.
- Do not use the charger if the plug or cord is damaged, or if the charger is otherwise defective.
- The charger and the battery does not contain any user-serviceable parts. Do not attempt to disassemble or repair the charger or battery on your own.
- Do not short-circuit the battery caused by metal objects.
- Clean the electrical product only with a dry cloth or rag.
- Avoid using an extension cord with the charger. Use an extension cord only if you are absolutely sure of the compatibility of the extension cord with the charger.
- Before you plug in the charger, check that the power supply voltage is consistent with the marked voltage charger.
- It is recommended that the battery is charged 10°C - 30°C temperature so that it remains a long age.
- If you charge the battery immediately after use, allow the battery to cool down for 30 minutes before charging.
- **To prevent fire disaster from overcharging the battery, disconnect the charger after the battery is fully charged.**
- **In order to ensure the battery life, the battery must be recharged every two months.**
- **Please keep the battery in a dry, cool and ventilated place. Avoid high temperature, super cold, and high humidity the environment.**

IMPORTANT! Please read this manual carefully and strictly following it during the use of this product. Otherwise, customers will take the corresponding risks of incorrect use. Before first use, be sure to carefully that the bicycle is assembled correctly. You can do this by submitting your bike in to the nearest bicycle circulation, or if you are an experienced bicycle enthusiast, you can compile and check the wheel itself. Make sure in particular that the pedals, saddle, brakes, handlebars, and any part of a self-installing is properly installed.

NOTE: Never ride your bicycle while under the influence of alcohol. Drinking alcohol impair the ability to react significantly limits your ability to use the wheel safely. Even a small amount of alcohol, limit your ability to operate safely in traffic.

If you want to change the bike battery, take the battery for recycling either the retailer or to a local recycling disposal company responsible.

3. Features

- Height-adjustable seat tube, suitable for different lengths for riders.
- Ped-electric assistance can also be run without electrical assistance, the mere muscular force.
- The rider's weight up to 136kg/300lb.
- E-bike gross weight approx. 30kg

3.1 Electrical System

- Battery: 36 volt lithium-ion (Li-ion) 10Ah
- Engine: 36 V, 350 W, brushless
- Pedal Sensor: speed sensor
- Top speed: 32 km / h (limited)
- Operating Distance: Up to 38-47 km

4. Parts of the Bicycle

4.1

1. Frame
2. Changeable battery
3. Seat lock lever
4. Brake lever
5. Tyre
6. 36V*350W motor
7. Pedal
8. Headlight



Note: The images in this document are for reference only and may differ from the actual product.

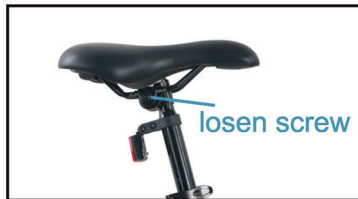
4.2 The saddle and handlebar stem

You may want to adjust the stem and saddle height to the desired height

Please note that the handlebar stem and saddle, however, must not be raised more than the tubes marked with a safety limit of subscriptions. Failure to follow these instructions may lead to serious personal injury.

1. Open the stem / saddle lock lever.
2. Adjust the stem / saddle to the desired height. Do not exceed the safety limit indication.
3. Attach the lock lever and make sure that it remains firmly in place.

When you sit on top of the saddle, your heels should just touch the pedal when it is in its lowest position. When cycling correctly, your knee should be slightly hooked and pedal will in the lowest position. You can also adjust the angle of the saddle, loosen the screw below the saddle, then placing the position, and tighten the screw back in place at the end.



5. General Terms of Use

5.1 IMPORTANT! Always before riding a bicycle:

- Check that the stem and handlebars are tightened securely.
- Check that all bolts, nuts and fasteners are properly tightened. Pay special attention to the engine mounts, the foot, the front fork and handlebar mounts.
- Check that the brakes and brake levers are working properly.
- You check that all reflectors and lights are in place and operate properly.
- Make sure that the battery is fully charged. Check the battery charge level of the control unit LED display.

5.2 Throttle

If the throttle lever is mounted on the handlebar, avoid dangerous, unplanned acceleration by keeping your hand away from the throttle you specify whenever you are not using it To ensure safe use, turn off the bike battery ignition key and the control unit of the On / Off button after each use.

5.3 During the riding

- When ready to ride, and use the throttle grip, the bike shot up from ahead! Do not switch on the bike before you are prepared to ride.
- When you release the throttle or brake, power supply to the motor immediately.
- When you start moving, or you ascend the hill, pedaling as much as possible to save the battery. Pedaling as much as possible yourself, you can also extend the life of the battery and engine life.
- When going downhill do not turn off the power wheel. This can lead to the engine control unit and damage.
- If the battery runs out while you are riding, you can pedal it as a normal bike and please go charge the battery as quickly as possible.
- Turn off the ignition and remove the key whenever you stop moving.
- Please make sure that you turn off the power first for preventing unintended acceleration.
- Taking care of the wheel to extend the working life of wheeling.

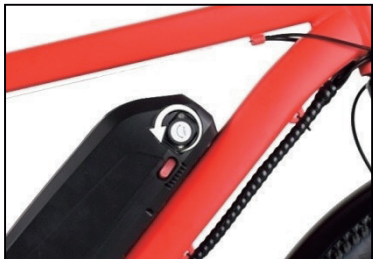
5.4 Battery and Charger

- Do not touch the battery terminals when the battery is charging. And, do not let the battery terminals come with metal or other conductive objects.
- When you charge the battery, insert the battery into a safe place away from children.
- Only use the supplied AC charger to charge the battery. Contact your dealer if you need anew charger.
- Never open, repair or modify the charger/battery by yourself.
- Prevent liquids, metal objects, or metal chips from entering the charger.
- Avoid shocks and dropping the charger.
- Do not cover the charger during the charging process. The charger heats up during charging.
- If you notice any strange odor or overheating during the charging, stop charging immediately.
- To avoid the premature destruction of the battery, recharge and drain the battery at least once a month. Do not use the battery nearly empty, recharge the battery fully before each use.
- Battery capacity, or reduced in cold weather. This is completely normal.
- Avoid water or other liquids when charging the battery.

- Do not leave the charger connected to the battery and power source for more than 10 hours.
- Use the battery and AC charger at all times in accordance with the instructions.

5.5 Charging the battery

You can charge the battery disconnected, or when the battery is fixed to the bike. First, pull out the charging connector cover, and then rotate to open. Connect the AC charger to the charging plug (3) to the charging port and an AC outlet.



5.6 Removing the battery

To remove the battery, open the battery lock key. Insert the key into the lock and turn it counterclockwise, then remove the battery. When you're done, put the battery back in place and lock it.



5.7 Battery level

You can easily check directly from the battery by pressing the TOP button.



5.8 Brakes

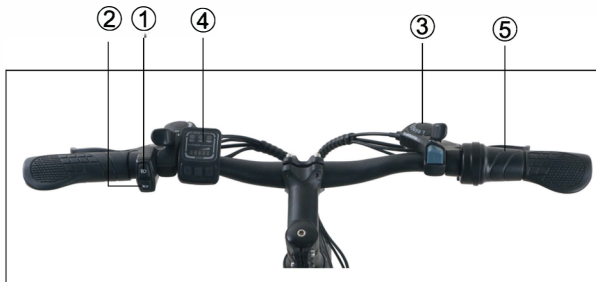
- Do not brake sharply or abruptly. Otherwise, you may fall on the bicycle.
- Learn how to remember which brake lever controls the front brake (left) and which one the rear brake (right).
- Move the body weight of backward braking, to reduce the effect of inertia.
- Keep your brakes in good condition and adjust / Export adjusted brakes if necessary. If the brake

pads are worn out, replace the brake pads in good time or deliver your bikes for repair.

- Before riding, always check the brakes.
- Remember that the braking distance can be extended considerably in slippery conditions.
- More information about the brakes, if necessary, get a bike shop or manufacturer.

5.9 Button and Display

- ① Headlight Button
- ② Bell
- ③ Shifter
- ④ LED Display
- ⑤ Throttle



Operating Instruction

- ① Headlight Button

- ② Bell

- ③ Brake lever

④ Display, the throttle and pedals will not work when the display is just on. When you adjust the display to 1-3 steps, rotate the throttle or press the pedals, then the ebike will forward.



- ⑤ Throttle , rotating it and the e-bike will forward.

6. Maintenance and repairs

IMPORTANT!

1. Do not attempt to open the battery casing, motor or control unit. Failure to do so may result in personal injury and void the warranty. In case of difficulty, please contact us.

2. Make sure that the tire surface is tightened.

3. Your bike is equipped with derailleur which tightens the chain automatically. If, the chain starts to slacken continuously and jumping off front chainring, you can easily tighten the chain, loosen first the rear axle nuts slightly, and then tighten the bolts. Make sure that the chain is rotating freely and tighten the rear axle nuts back on. Take the bike for service if you do not know what should do.

7. Maintenance

Problem	Solution
Low top speed	Charging the battery fully
Power switched on but the engine does not work	Install the battery again
Shortened Range	View tire pressures Charge the battery again or let the charger examined Replace the battery with a new battery
Power switched on, the bike does not work	The control unit or the motor must be replaced
Power switched on, the bike works only with throttle	The controller, the motor or pedal sensor replacement
Throttle unresponsive	View battery charge level and recharge fully if necessary The control unit or the motor must be replaced
The cycle goes away by itself	Check that the throttle is not jammed Lubricate or replace the throttle grip
The cycle does not start after stop	Check that the brake lever is released completely
The charger is connected, the signal light does not burn	Ensure that the charger is receiving power
The charger connected to the bike and plug sockets	Check that the battery is not fully charged already Check that the charger is properly connected

Please contact us if the problem can not be solved the above-mentioned

Technical Specifications

Model	AM-ZNH-02-26
Type	Pedelec
Weight	24kg
Permissible gross weight	Maximum 136kg.
Dimensions (W x D x H) mm	1770×640×1010
Maximum speed	32km/h((Limited)
Maximum mileage	38-47 km
Display	3 step LED
Battery	36V,Li-ion, 10Ah
Chargers	100-240V/42V* 2 A
Charging time	3~4 hours
Brakes	disc brake
Motor	36Vx350W, starting at about 32km / h the motor power supply is interrupted.
Pedalsensor	speed sensor

8. Installation guide

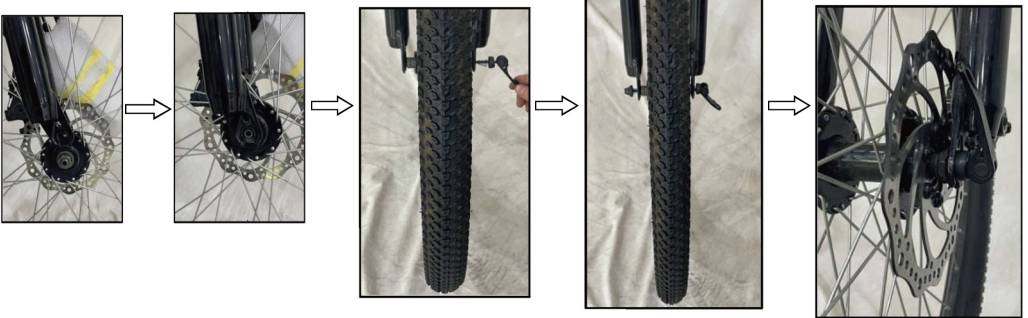
8.1 Take out the Ebike and check the parts list

- ①The complete ebike packaging is as shown in the figure below, and check whether the parts are damaged.
- ②Check whether the parts are complete. The seatpost+ saddle and handlebars are tied to the ebike, and the front wheel quick release is tied to the front fork legs. (Use scissors to cut the cable tie for assembling use) In addition, there are pedals, charger, charger cable and tools in the cardboard box.



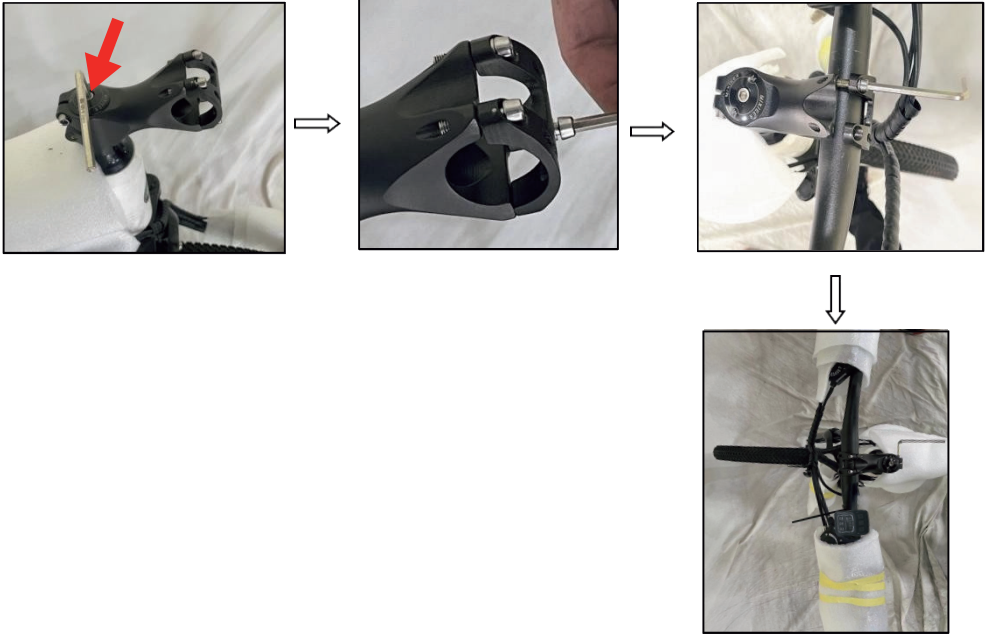
8.2 The front wheel

- ①Tear off the front fork packaging and install the front wheel on the front fork.
- ②Pay attention to the orientation of the front wheel: the front wheel disc is on the same side as the front fork disc brake seat, and the axles on both sides are installed in place.
- ③Install the quick release, loosen the screw, the quick release handle is in the same direction as the disc brake, pass the other side, install the spring and nut.
- ④Tighten the nut and turn the quick release handle upward Press tightly, pay attention to the handle pressing force not too loose, to ensure that the front wheel is locked.
- ⑤After the front wheel is assembled, turn the front wheel to check whether the front wheel rotates smoothly.



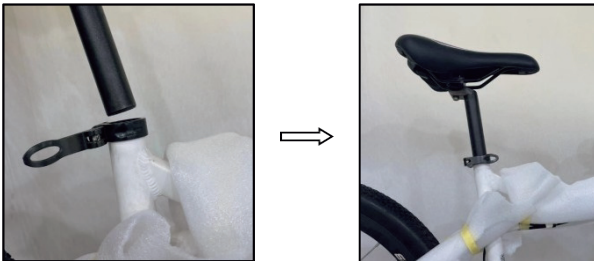
8.3 The handlebar and the stem

- ① Hold the stem upright and pre-lock the upper screws of the stem.
- ② Loosen the 4 screws of the front cover of the stem, then take the handlebar and put it into the stem to lock the handlebar, pay attention to the corresponding middle position of the handlebar, and tighten the screws at a proper angle of the handlebar.
- ③ Adjust the center of the handlebar to be in a straight line with the center of the front wheel. Tighten the screws of the stem left and right with a 5# Allen key.



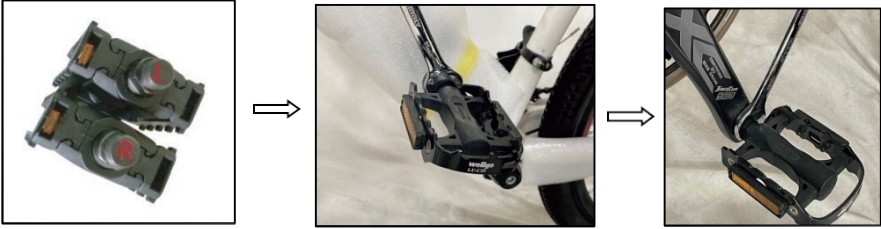
8.4 The seatpost (with saddle)

- ① Loosen the quick release and insert the saddle into the seat tube.
- ② Straighten the angle of the saddle so that it is in line with the main tube of the frame, and adjust the height to a suitable height (be careful not to exceed the handlebar safety line) and lock the quick release handle.



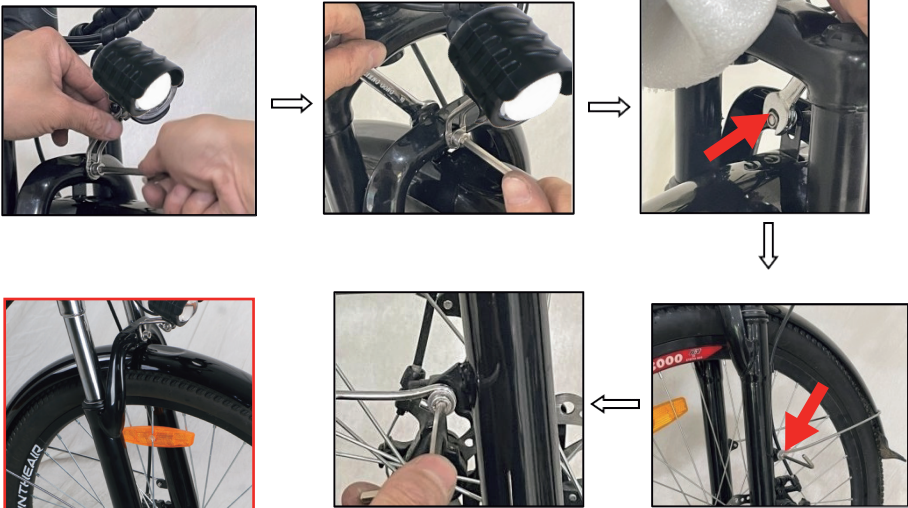
8.5 The pedals

- ① Take out the pedals, pay attention to the left and right pedals, and the specifics are displayed according to the signs on the pedal axis. The left pedal is equipped with the crank side, and the right pedal is equipped with the chain side.
- ② Take out the tool and use one end of a 15# open-end wrench to lock the pedal, the left pedal is locked in a counterclockwise direction, and the right pedal is locked in a clockwise direction. Note that the pedal needs to be locked.



8.6 The front light and the front fender and rear fender

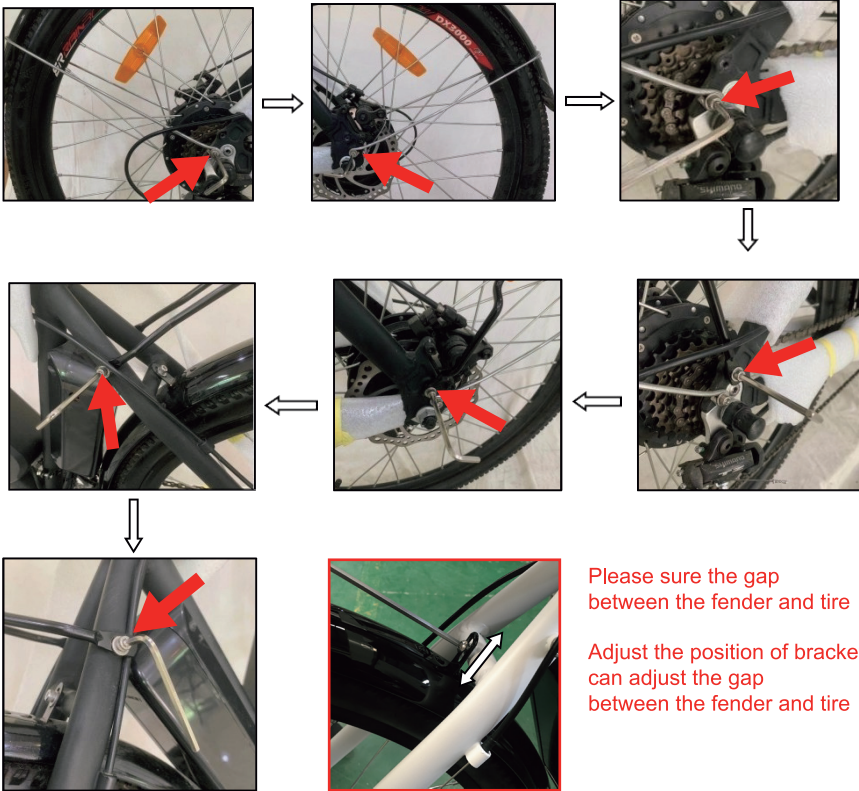
- ① Take the screw out and go through the front light and the front fork hole in turn, paying attention to the gasket on the screw head.
- ② Take the plastic fender and install it behind the front fork, pass through the fender screw hole, and then install the washer and nut, and pre-lock the nut.
- ③ Take 5# hex key, fix the front cup head screw, and then tighten the nut with a 10 # open-end wrench, note that the front light and mud board need to be aligned.



Please sure the gap between the fender and tire

8.7 The rear fender support and luggage carrier

- ①Take 4# hex key, fix the fender support.
- ②Take the luggage carrier, the fender support matches the holes of the luggage carrier then tightens the screws.
- ③Tighten the front screws of the luggage carrier.



Please sure the gap between the fender and tire

Adjust the position of bracket can adjust the gap between the fender and tire