

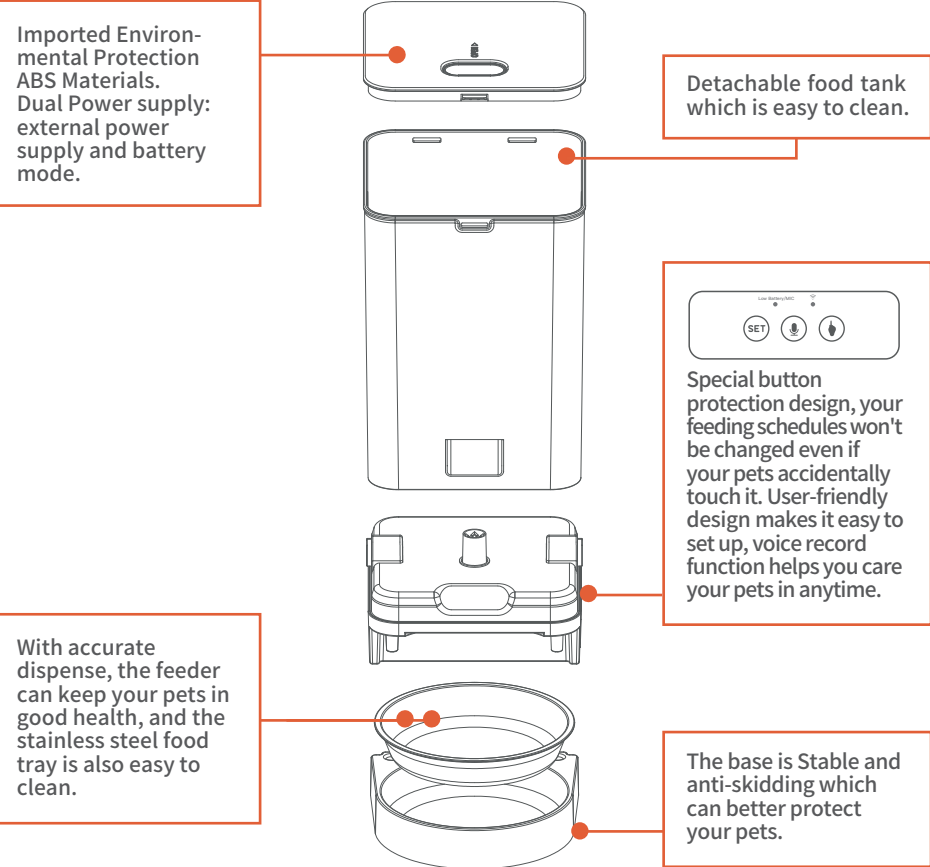
AUTOMATIC PET FEEDER WITH WIFI

Manual

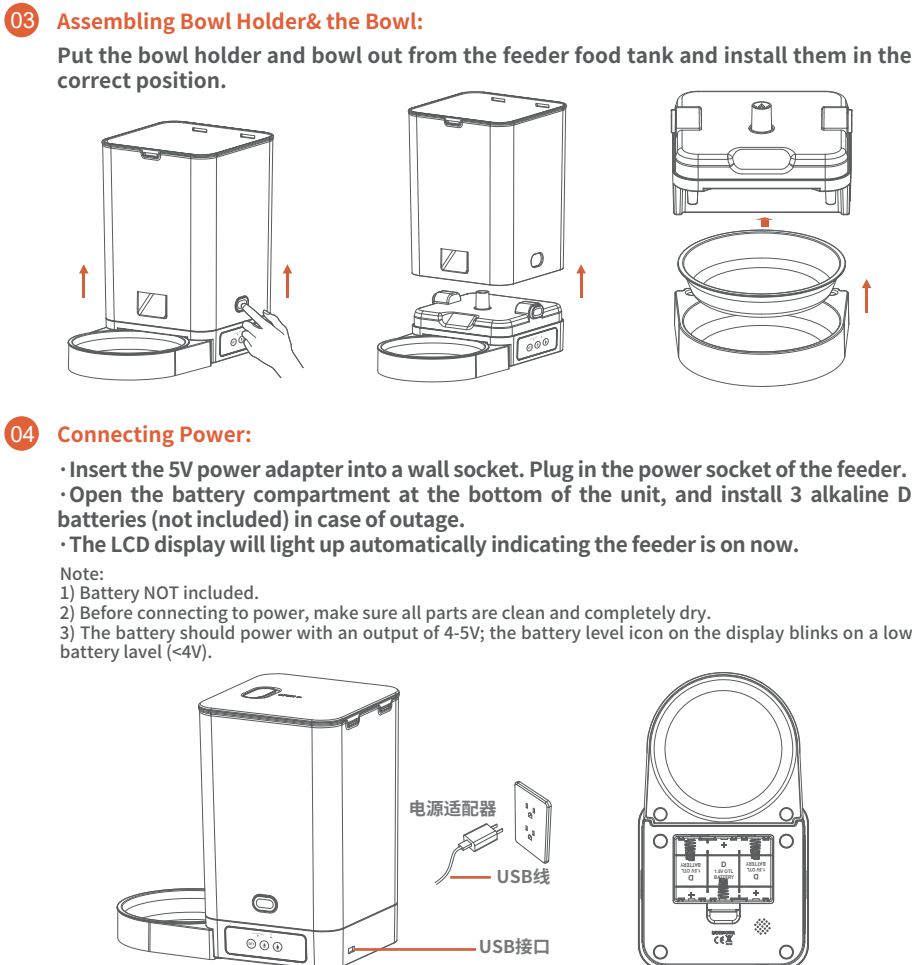
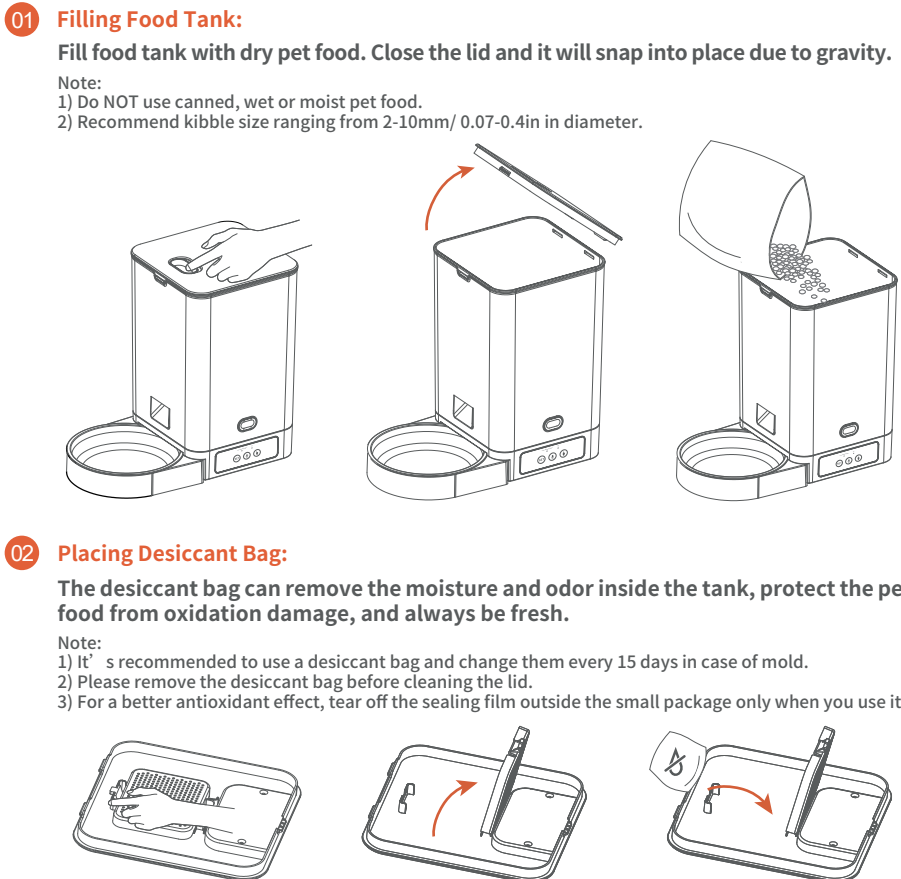
Please read carefully before using the product



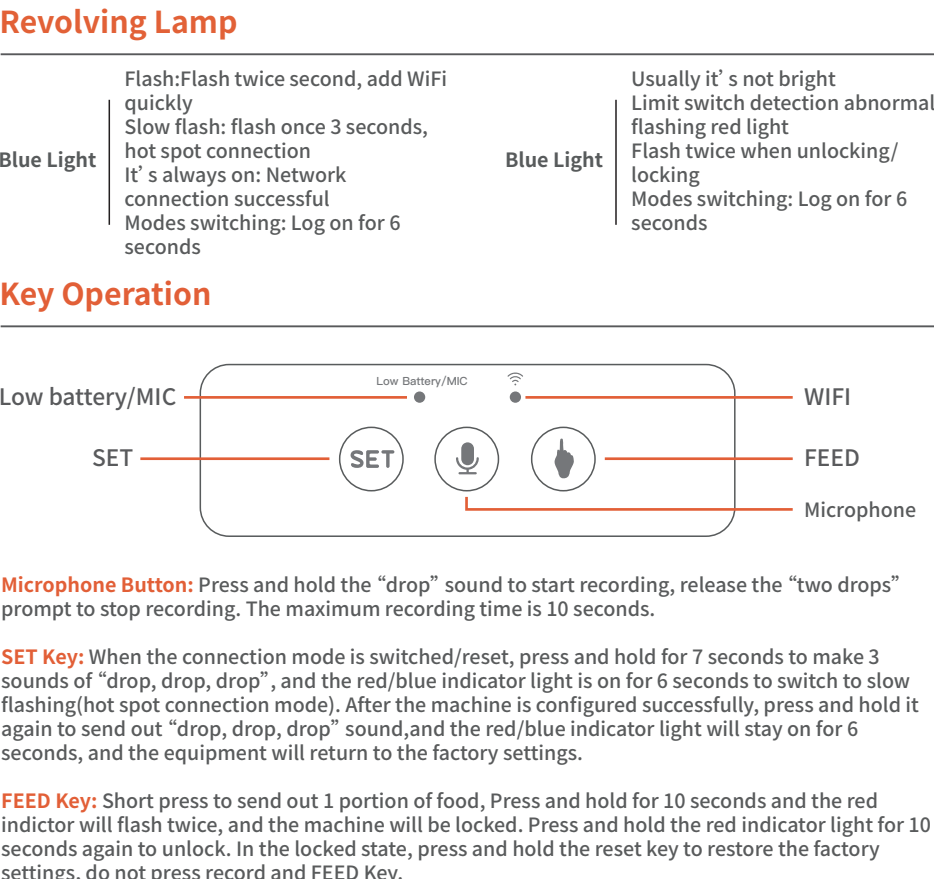
Features of Automatic Pet Feeder



Assemble and Use



Function Introduction



Bottom battery box

Three NO.1 batteries can be placed as stand by power supply. (When the battery is powered, the feeder only retains the automatic feeding function set by app, and other functions cannot be used.)

Battery description

1.Use three NO.1 alkaline batteries for power supply. 2.The positive and negative electrodes of the battery refer to the positive and negative signs in the battery compartment. 3.When the battery is low, the feeder should be powered off before replacing with a new battery. 4.The battery must be removed from the feeder before the feeder is discarded. 5.When removing the battery, the feeder must be powered off. 6. According to the relevant national regulations, please place the waste batteries in the special sotorage point. 7. If the battery is not used for a long time, please take out the battery. In case of leakage, please clean the battry compartment immediately and put the leaking battery in a special storage point.

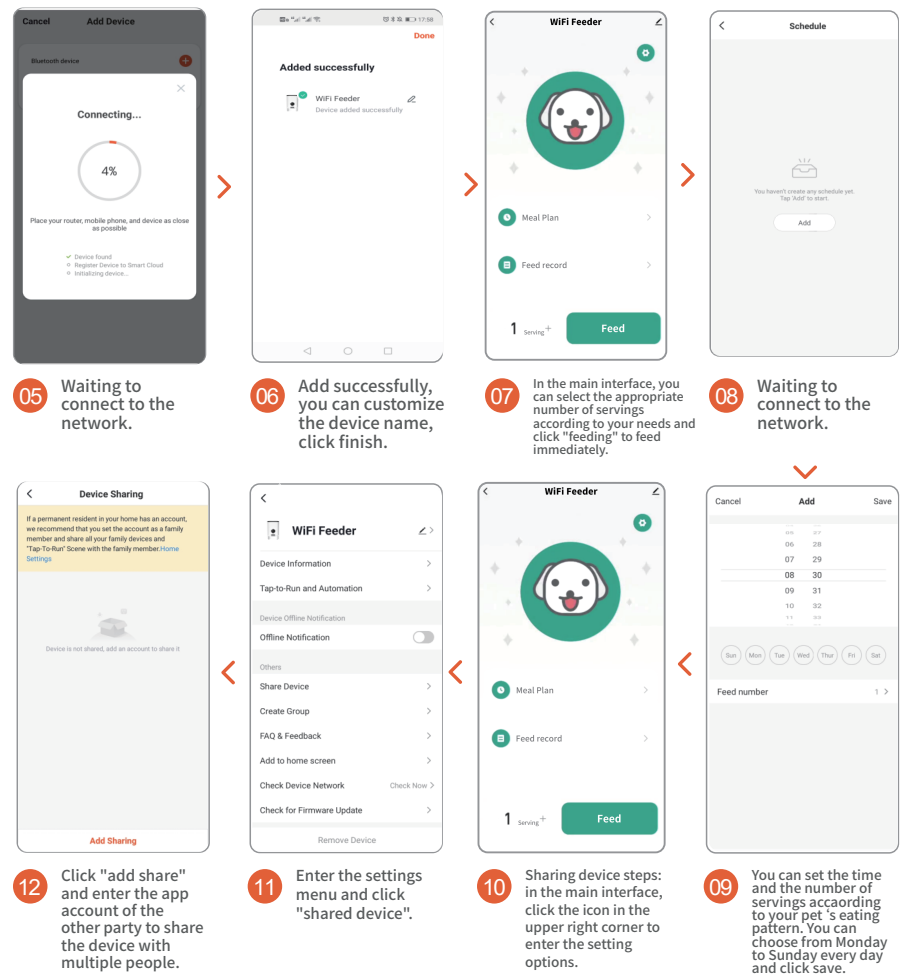
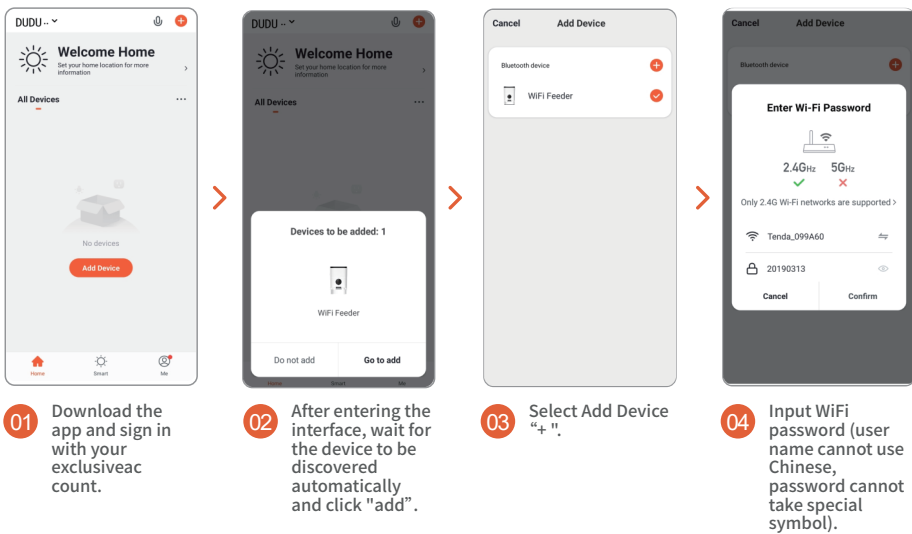
Recording settings

After the feeder is configured, a recording can be added to the feeder. This recording will be played every time you press the feeding key manually or automatically to remind the pet that the feeding time is up. The specific operation is as follows: Press and hold the microphone button and start recording. After recording, release the button to send out two "didid" prompts to complete the recording. The recording time is up to 10 seconds. If you are not satisfied, you can repeat this operation to cover the previous recording.

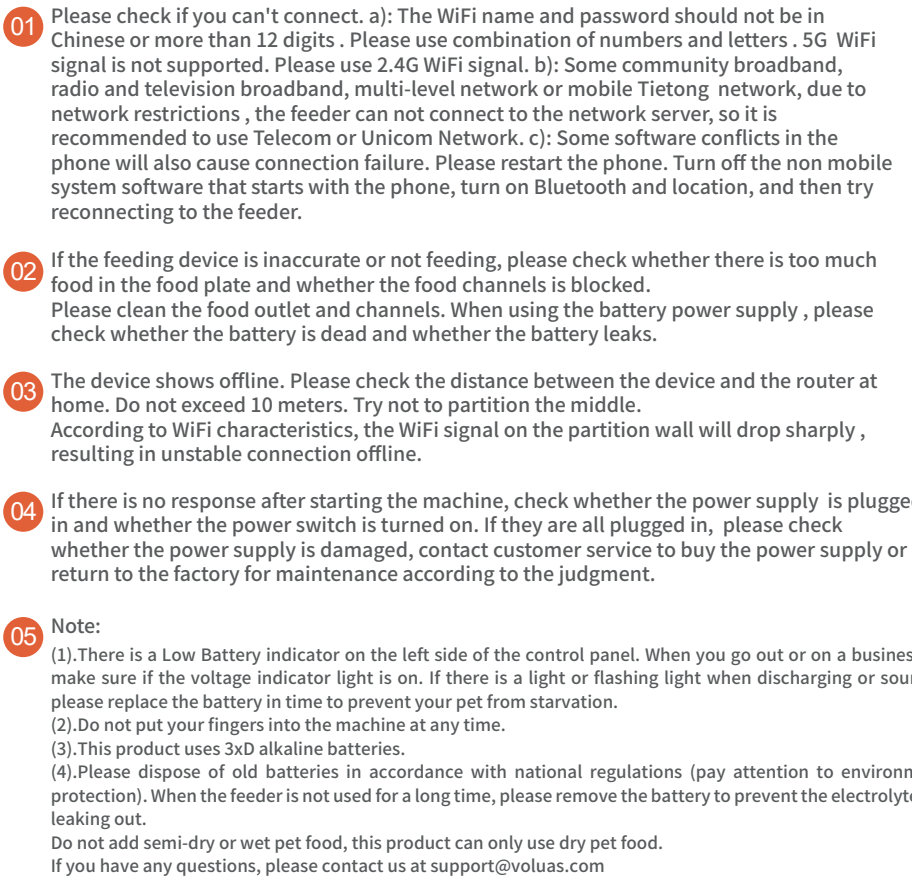
AP mode configuration (optional)

Please configure according to the diagram in the manual. If the configuration is not successful, please switch to AP mode for configuration. The specific operation process is as follows: 1. In the mode of waiting for connection, the status indicator is flashing rapidly. Press and hold the "reset" key for 7 seconds to give out three sounds of "drop, drop, drop". After letting go, the indicator light will switch to slow flashing, and then enter AP mode. 2. Open the mobile app, select Add Device-Manual add-small household appliances-pet feeder, select other methods-hot distribution network in the upper right corner of the interface, fill in the WiFi password according to the prompt, and then enter the WiFi interface of the mobile phone to connect to a WiFi signal of smartlife XX.X.3. After selecting and connecting the hotspot signal, return to app and wait for the connection to complete.

WiFi Intelligent Pet Feeder Smart App Specific Operation



Simple trouble shooting of pet feeder



How to clean the feeder

