

Product Parameters

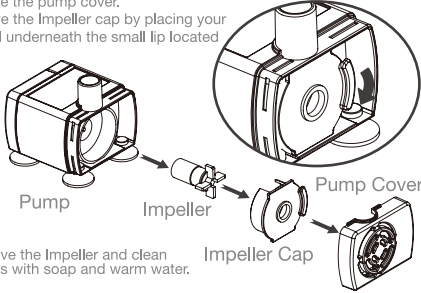
Model	PW-104/105
Size	188*188*149mm
Material	PP resin
Weight	0.6-0.9kg
Capacity	2.4L (80 Oz)
Power Supply	DC 5V 1A
Recommended pet type	Cats and Medium/Small Dogs

Daily Maintenance of Pump

Cleaning the pump is essential to the longevity of fountain
Clean the pump every 2 weeks.

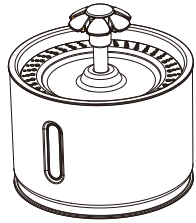
1.Remove the pump cover.
2.Remove the Impeller cap by placing your fingernail underneath the small lip located

3.Remove the Impeller and clean the parts with soap and warm water.



Cautions

- 1、Be sure to shut down and disconnect the power supply for safety when the equipment is not in use.
- 2、This product is for indoor use only.
- 3、The power adapter and wire plug must not be flooded during cleaning.
- 4、This product is not allowed to run without water (can be ignored for models with the function of outage automatically without water).
- 5、Please disconnect the power supply before maintaining and cleaning the machine.



Pet Water Fountain

PW-104/105

Instruction Manual

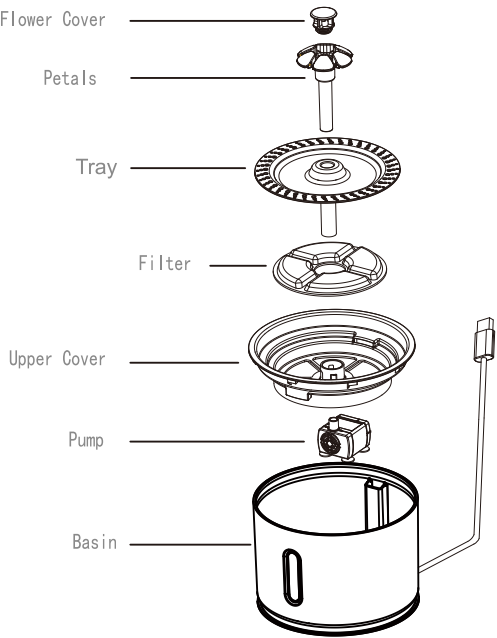
Dear Customer:

Hello! Thanks for using this product.

We sincerely hope to help you create a high-quality pet raising life.

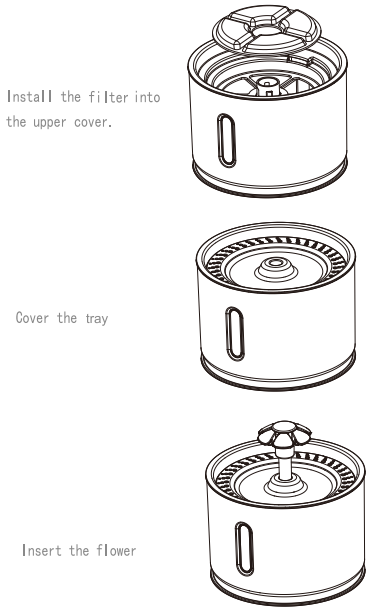
Please read this manual carefully.

Product Diagram



Operation Guide

- 1、Take out the equipment and all accessories
- 2、Wash the basin and add water.
- 3、Take out the filter and soak the filter in water for cleaning.
- 4、Install the filter into the upper cover and cover the tray.
- 5、Insert the flower spray head and turn on the power to start working.



Schematic Diagram for Pump Instillation

