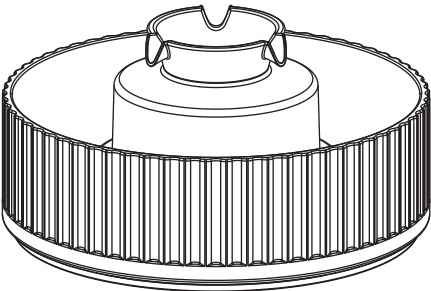


ENGLISH

Cupcake



PORCELAIN  
PET DRINKING FOUNTAIN

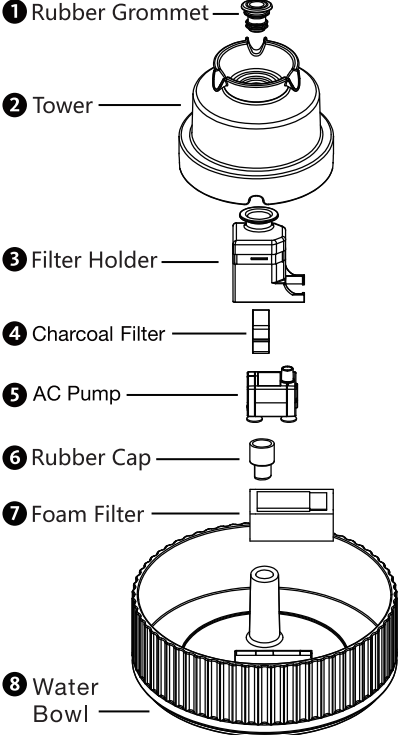
INSTRUCTION MANUAL

SPECIFICATION



Product Name	Porcelain Pet Fountain
Input Voltage	AC 100V-240V 50/60HZ
Output Voltage	DC 5V
Pump	DR-DC160 Pump
Power Consumption	1.5 W
Product Dimensions	240mm(L) x 240mm(W) x 125mm(H)
Product Weight	5.29lbs 2.4kg
Cord Length	1.8m
Bowl Material	Porcelain
Filter System	Pre-Filter: Ultra-fine Foam Filter Post-Filter: High Lodine Value Coconut Shell Activated Carbon
Capacity	2.1 L (70 Oz)
Compliance	CE FC RoHS

COMPONENTS



IMPORTANT REMINDERS

- For INDOOR USE only!
- Protect the plug or outlet from getting wet. Place it in a higher position than the water fountain.
- Run on a DC 5V power adaptor only.
- Keep water level above the 'MIN' mark on the cone to avoid the pump running dry and burnt out.
- Keep your pet away from chewing up the cord. Frayed or exposed wires could lead to danger.
- Place the fountain at a safe place to avoid possible damage from water spillage.

Q&A TROUBLESHOOTING

How often should I replace a filter?

The charcoal filter and foam filter should be replaced every 2 - 4 weeks, depending on the water consumption. Frequent use of fountain will increase number of particles of saliva and debris in the water. If you have multiple pets, filters should be replaced more frequently.

Why am I finding small black particles in the fountain?

It is common for some charcoal particles seeping from the filter. The activated carbon dust makes no harm to your pets. You may run the filter in water for a while before placing it in the fountain.

How often should I clean the fountain?

The fountain should be clean at least every 2-week. Clean it once a week If you live in hard water areas.

How long will the pump last for?

The pump should last for 2.5 - 4 years (>20,000 hours). Consider replacing the pump after using it for this period of time.

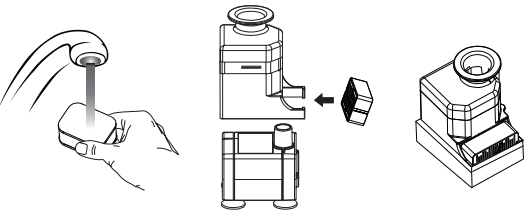
What is the power consumption of the fountain?

The water fountain runs on a low power AC pump with power adaptor. The power consumption for the total unit is about 2.0 watts, that is about 1.5 kWh per month, or 18 kWh per year.

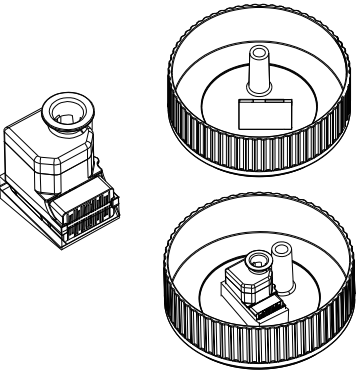
FILTER ASSEMBLY



1. Rinse charcoal filter in running water to help remove any excess charcoal dust. Assemble the filter holder on the pump, place the charcoal filter at the side of the filter holder. Place the foam filter surrounds the pump and the charcoal filter.



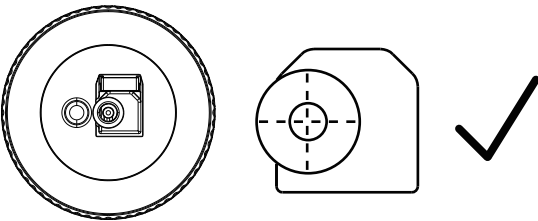
2. Place the assembled filter holder in the square. Make sure it is tightly adhered to the bowl by pressing the suction feet downwards.



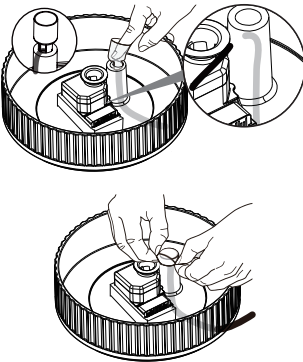
FILTER ASSEMBLY



2.1 Upon correct assembly, the water outlet of the filter holder should align to the center of the bowl from a top view.



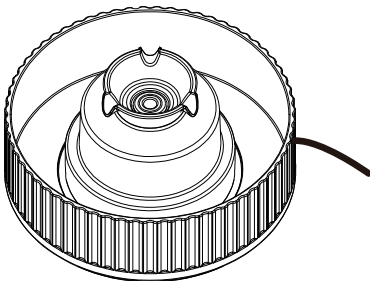
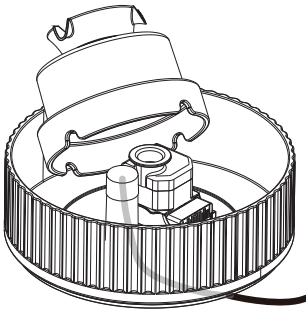
3. Insert the power cord through the rounded tube. Place the rubber cap to the tube, make sure the gap is aligned to the power cord. Use your finger to hold the rubber cap and reverse it to seal off the top of the tube.



FILTER ASSEMBLY



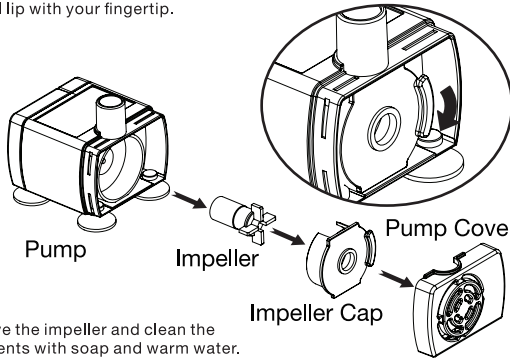
4. Carefully place the tower to the bowl. The rubber cap should be aligned and connected to the water outlet of the filter box.



PUMP MAINTENANCE

Clean the pump every 2-week is essential for the longevity of fountain.

- 1.Remove the pump cover.
- 2.Remove the impeller cap by pressing the small lip with your fingertip.



3.Remove the impeller and clean the components with soap and warm water.

FOUNTAIN MAINTENANCE

- Power off before cleaning the fountain.
- Clean the fountain with a sponge using clean water or with neutral detergent.
- Do not clean the foam filter with detergent, water only.
- Do not clean the fountain with hot water, gasoline, alcohol or organic solvent.
- Dishwasher safe for the porcelain bowl and the porcelain tower only.