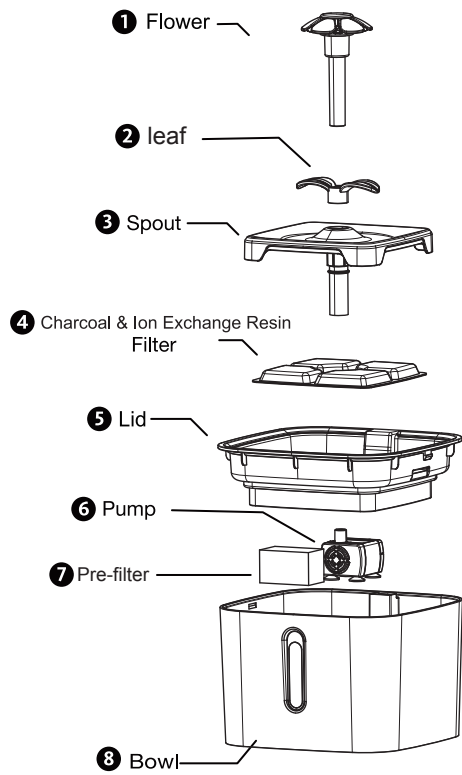


SPECIFICATION

Product Name	PET FOUNTAIN
Input Voltage	AC 100V-240V 50/60HZ
Output Voltage	DC-5V
Pump	Ultra low noise AC Pump
Power Consumption	1.5W
Product Dimensions	194mm(L) X194mm(W) X153mm(H)
Product Weight	0.7 kg
Cord Length	1.8m
Housing Material	High Glossing Anti-bacterial PP Resin
Filter System	High Iodine Value Coconut Shell Activated Carbon & Ion Exchange Resin
Capacity	2.5 L (84Oz)
Compliance	Pump: Power Adatper:
ECO	

COMPONENTS



IMPORTANT REMINDERS

- FOR INDOOR USE ONLY!
- To avoid the possibility of the plug or outlet getting wet.
- Put power adapter in higher position of pet fountain unit.
- Runs on DC 5 V power adapter , other brand power adapter is prohibited
- Do not allow the water level to fall below the "MIN" mark on the cone, or the pump may run dry and burn out.
- Make sure the cord does not have any frayed or exposed wires due to pet's possibly chewing the cord.
- Place the pet fountain on a protective surface to guard floor against possible water damage from spillage.

Q&A TROUBLESHOOTING

How frequently do I need to change the filter?

The charcoal filter and foam filter should be changed every 2 to 4 weeks, depending on the number of pets using the fountain. Having more pets that use the fountain will increase the saliva content and debris in the water, so the filter will need to be changed more frequently.

Why am I finding small black particles in my pet's fountain?

It is common for some residual charcoal dust to seep from the filter. This is perfectly normal and not harmful to your pet in any manner. To help prevent the charcoal dust from shedding, rinse the filter thoroughly under running water before placing inside the fountain.

How often should I clean the fountain?

Fountain should be clean at least every two weeks. Please clean it once a week if you living in hard water.

How long will the fountain pump last?

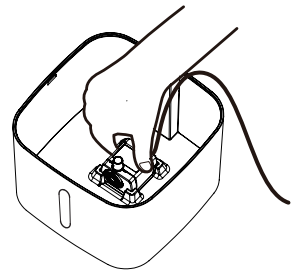
The fountain runs on long life AC Pump.The pump normally last between 2.5-4 years (>20,000 hours). If the pump has been in regular use for approximately this time period, it may be old and need replacing. We provide full 1-year warranty for pump.

What's the fountain power consumption?

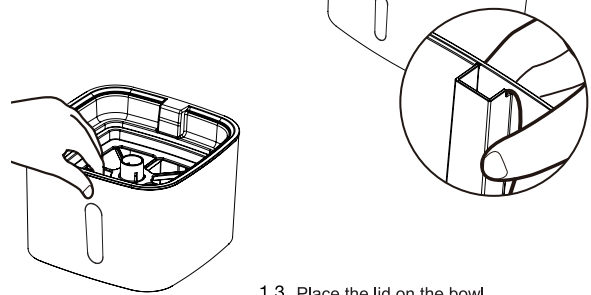
Fountain runs on a super low power AC pump with power adapter The power consumption for total unit is about 2.0 Watts so the total power consumption is about 1.5 kWh per mnoth or 18 kWh per year.

1.ASSEMBLY PUMP AND LID

- 1.1 Take the bowl and place the pump inside the square indention . (It has been setup when package)



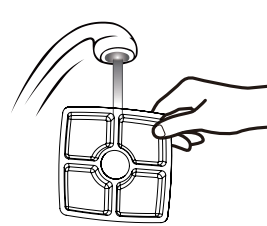
- 1.2 Feed the in-line plug of the electrical power cord over and through the raised post and out the notch on right. (It has been setup when package)



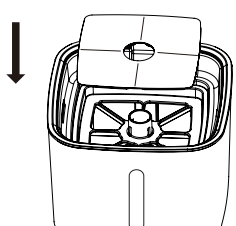
- 1.3 Place the lid on the bowl.

2.ASSEMBLY FILTER AND SPOUT

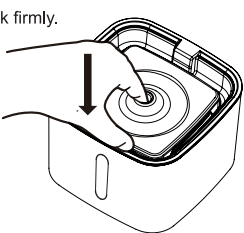
- 2.1 Rinse the charcoal filter thoroughly in cold water to help remove any excess and loose charcoal dust.



- 2.2 Place the filter on top of the lid, and press down firmly.

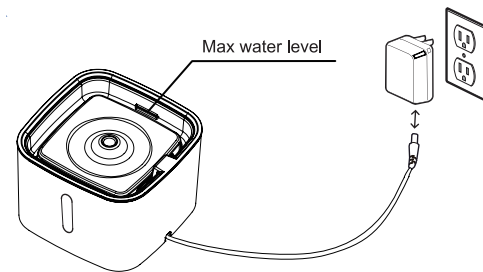


- 2.3 Place the spout and press down to lock firmly.

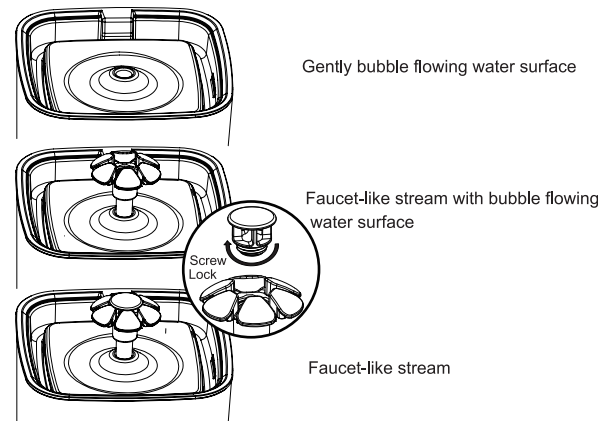


3.WATER FILLING AND POWER-ON

- 3.1 Add water as needed. The max water level is on the top of the filter. Connect the inline plug and plug the adaptor into and electrical outlet.



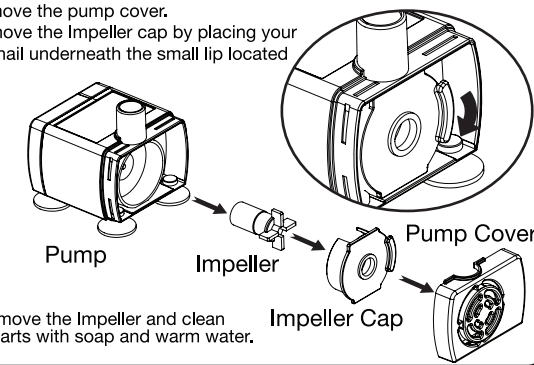
- 3.2 Water flow setting:



PUMP MAINTENANCE

Cleaning the pump is essential to the longevity of fountain
Clean the pump every 2 weeks.

- 1.Remove the pump cover.
2.Remove the Impeller cap by placing your fingernail underneath the small lip located



- 3.Remove the Impeller and clean the parts with soap and warm water.

FOUNTAIN MAINTENANCE

- Power off before fountain clean.
- Clean fountain by water or a foam with neutral detergent.
- Foam filter can only clean by water. Detergent is not allowed.
- Hot water,gasoline,alcohol or organic solvent is not allowed to clean the fountain.
- Dishwasher safe, excluding pump.