

AUTOMATIC PET FEEDER WITH WIFI

Manual

Please read carefully before using the product



APP

Features of Automatic Pet Feeder

Build in high grade resin.
Dual Power supply:
external power supply and battery mode.

Detachable food tank which is easy to clean.

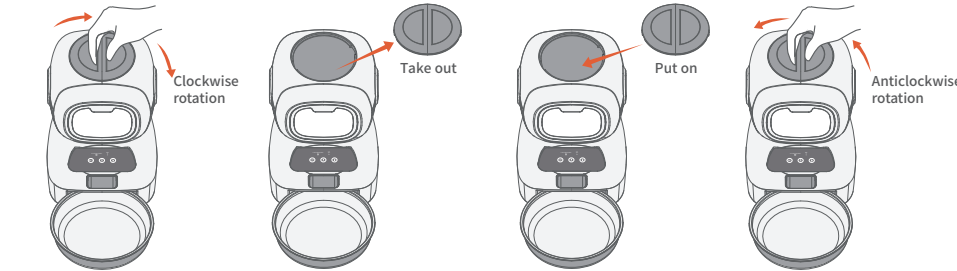
Special button protection design, your feeding schedules won't be changed even if your pets accidentally touch it. User-friendly design makes it easy to set up, voice record function helps you care your pets in anytime.

With accurate dispense, the feeder can keep your pets in good health, and the stainless steel food tray is also easy to clean.

The base is stable and anti-skidding which can better protect your pets.

Assemble and Use

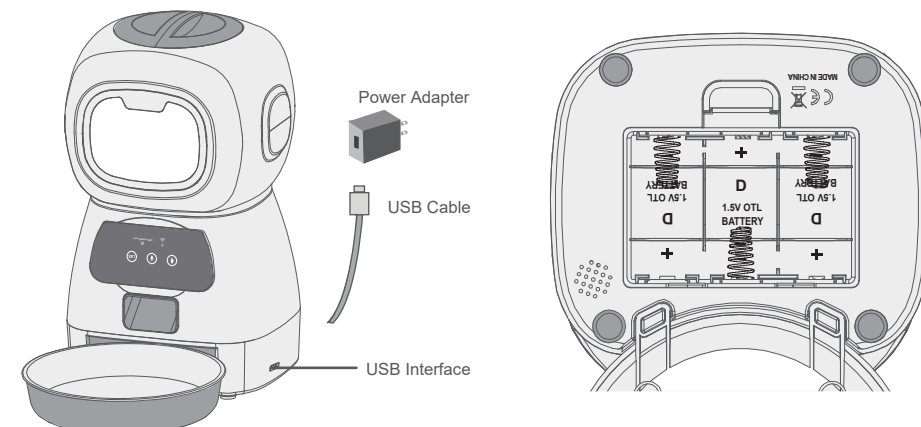
01 Remove / assemble bucket lid and grain bucket as shown.



Take out grain barrel

Put in grain barrel

02 Install D size battery*3.



Bottom battery box

Three NO.1 alkaline batteries can be placed as stand by power supply. (When the battery is powered, the feeder only retains the automatic feeding function set by app, and other functions cannot be used.)

Battery description

1.Use three NO.1 alkaline batteries for power supply. 2.The positive and negative electrodes of the battery refer to the positive and negative signs in the battery compartment. 3.When the battery is low, the feeder should be powered off before replacing with a new battery. 4.The battery must be removed from the feeder before the feeder is discarded. 5.When removing the battery, the feeder must be powered off. 6. According to the relevant national regulations, please place the waste batteries in the special storage point. 7. If the battery is not used for a long time, please take out the battery. In case of leakage, please clean the battery compartment immediately and put the leaking battery in a special storage point.

How to install food tray

There are two connecting holes on the side of the food plate. Insert the connecting column at the bottom of the body into the connecting holes.

Recording settings

After the feeder is configured, a recording can be added to the feeder. This recording will be played every time you press the feeding key manually or automatically to remind the pet that the feeding time is up. The specific operation is as follows :

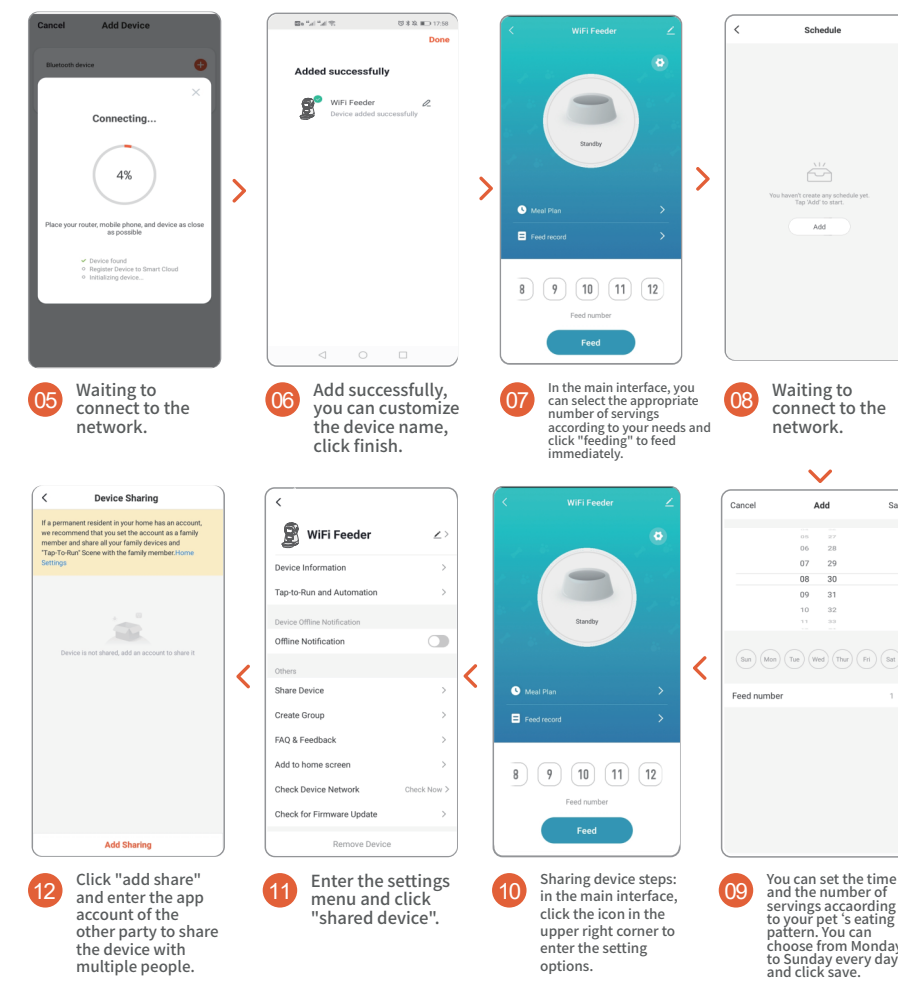
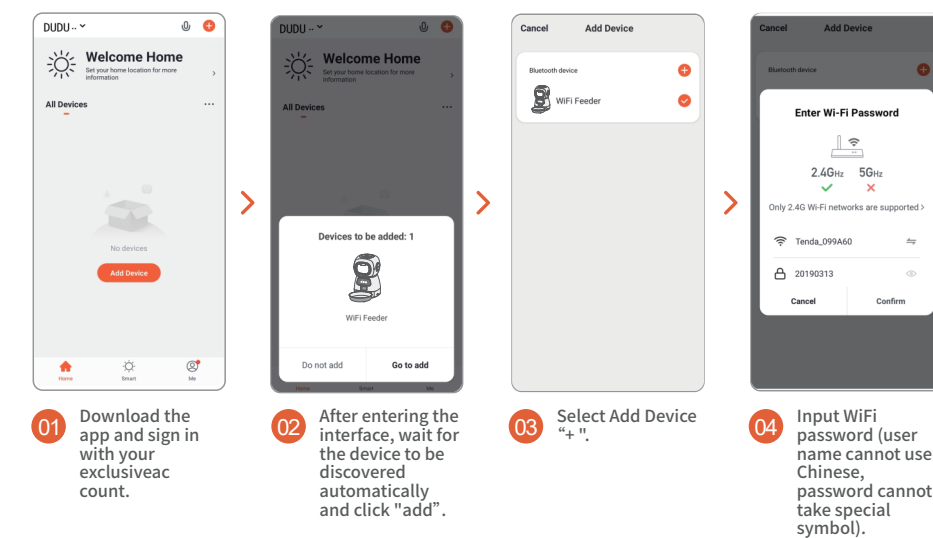
Press and hold the microphone button and start recording. After recording, release the button to send out two "didi" prompts to complete the recording. The recording time is up to 10 seconds . If you are not satisfied, you can repeat this operation to cover the previous recording.

AP mode configuration (optional)

Please configure according to the diagram in the manual. If the configuration is not successful, please switch to AP mode for configuration. The specific operation process is as follows : 1. In the mode of waiting for connection, the status indicator is flashing rapidly. Press and hold the "reset" key for 7 seconds to give out three sounds of "drop, drop, drop". After letting go, the indicator light will switch to slow flashing, and then enter AP mode. 2. Open the mobile app, select Add Device-Manual add-small household appliances-pet feeder, select other methods-hot distribution network in the upper right corner of the interface, fill in the WiFi password according to the prompt, and then enter the WiFi interface of the mobile phone to connect to a WiFi signal of smartlife X XX. 3. After selecting and connecting the hotspot signal, return to app and wait for the connection to complete.

WiFi Intelligent Pet Feeder

Smart App Specific Operation



Function Introduction

Revolving Lamp

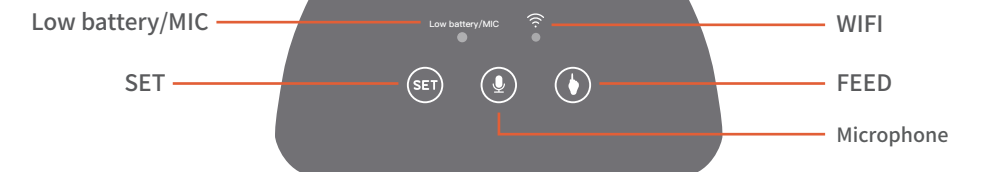
Blue Light

Flash:Flash twice second, add WiFi quickly
Slow flash: flash once 3 seconds, hot spot connection
It' s always on: Network connection successful
Modes switching: Log on for 6 seconds

Blue Light

Usually it' s not bright
Limit switch detection abnormal flashing red light
Flash twice when unlocking/locking
Modes switching: Log on for 6 seconds

Key Operation



Microphone Button: Press and hold the "drop" sound to start recording, release the "two drops" prompt to stop recording. The maximum recording time is 10 seconds.

SET Key: When the connection mode is switched/reset, press and hold for 7 seconds to make 3 sounds of "drop, drop, drop", and the red/blue indicator light is on for 6 seconds to switch to slow flashing(hot spot connection mode). After the machine is configured successfully, press and hold it again to send out "drop, drop, drop" sound, and the red/blue indicator light will stay on for 6 seconds, and the equipment will return to the factory settings.

FEED Key: Short press to send out 1 portion of food, Press and hold for 10 seconds and the red indicator will flash twice, and the machine will be locked. Press and hold the red indicator light for 10 seconds again to unlock. In the locked state, press and hold the reset key to restore the factory settings, do not press record and FEED Key.

Simple trouble shooting of pet feeder

- 01 Please check if you can't connect. a): The WiFi name and password should not be in Chinese or more than 12 digits . Please use combination of numbers and letters . 5G WiFi signal is not supported. Please use 2.4G WiFi signal. b): Some community broadband, radio and television broadband, multi-level network or mobile Tietong network, due to network restrictions , the feeder can not connect to the network server, so it is recommended to use Telecom or Unicom Network. c): Some software conflicts in the phone will also cause connection failure. Please restart the phone. Turn off the non mobile system software that starts with the phone, turn on Bluetooth and location, and then try reconnecting to the feeder.
- 02 If the feeding device is inaccurate or not feeding, please check whether there is too much food in the food plate and whether the food channels is blocked. Please clean the food outlet and channels. When using the battery power supply , please check whether the battery is dead and whether the battery leaks.
- 03 The device shows offline. Please check the distance between the device and the router at home. Do not exceed 10 meters. Try not to partition the middle. According to WiFi characteristics, the WiFi signal on the partition wall will drop sharply , resulting in unstable connection offline.
- 04 If there is no response after starting the machine, check whether the power supply is plugged in and whether the power switch is turned on. If they are all plugged in , please check whether the power supply is damaged, contact customer service to buy the power supply or return to the factory for maintenance according to the judgment.

How to clean the feeder?

This product cannot be placed outdoors or exposed to the rain. Please use a wet cloth to clean it and prevent water from entering the feeder. If you need to open the food tank, please pull out the head of the robot with strength. The food tank and food bowl can be washed by water.

