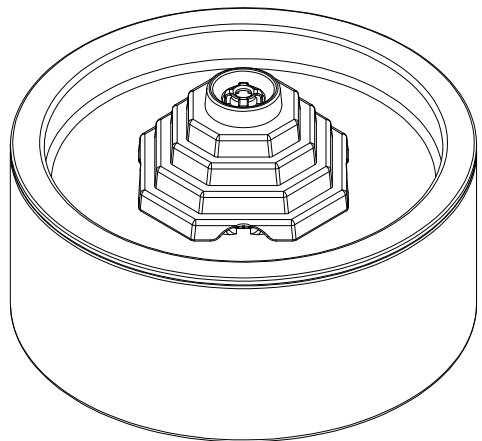


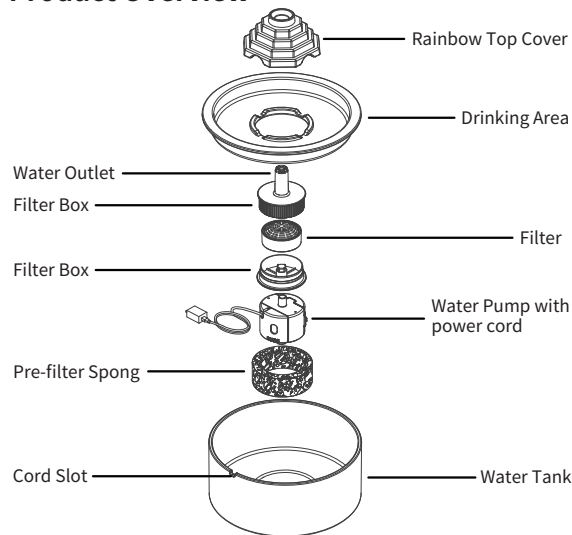
正面

Rianbow Automatic Water Fountain -1.5L Ceramics



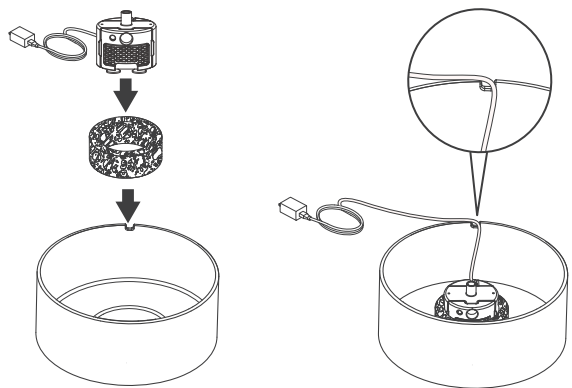
User Manual

Product Overview



How to Use

1 Install the pre-filter spong and the pump

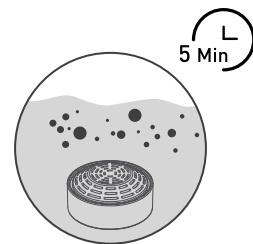


Insert the pump into the foam filter and set both down into the round inside the bowl. Press down so the suction cups attach.

The water pump USB cable goes through the cord slot

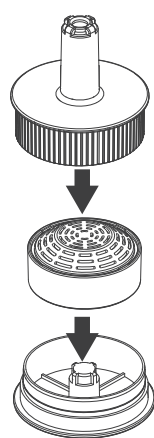
2 Install the filter

Step1: Soak the filter in a clean bowl for 5 minutes.

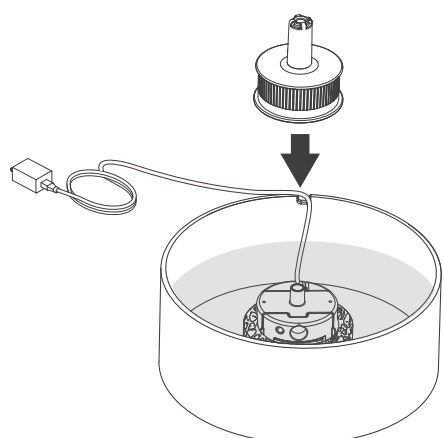


Notes:
1) Fully soak the filter before turning on the appliance; otherwise, water may not flow through the filter smoothly and cause spillage.
2) Do not soak the filter in the water tank of the fountain in case of any surface dust.

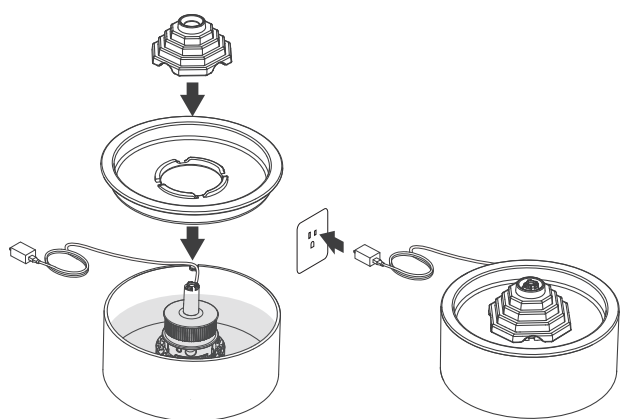
Step2: Put the filter in the filter box, and close the lid.



Step3: Install the filter box.



3 Install the water tray and rainbow top cover

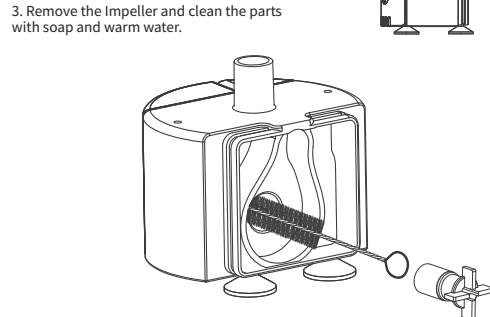
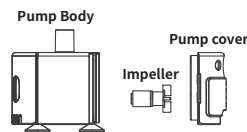


Put back the water tray and rainbow top cover to form a seal.

Connect the power adaptor.

To extend product life, please clean the pump every 2 weeks.

1. Remove the Pump Cover
2. Clean the pre-filter grate with soap and warm water.
3. Remove the Impeller and clean the parts with soap and warm water.

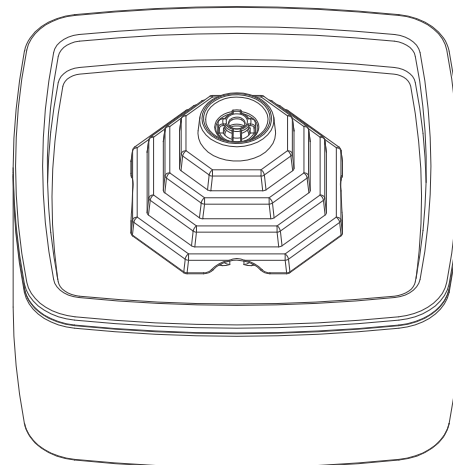


Cautions

1. Be sure to shut down and disconnect the power supply for safety when the equipment is not in use.
2. This product is for indoor use only.
3. The power adaptor and wire plug must not be flooded during cleaning.
4. This product is not allowed to run without water (can be ignored for models with the function of outage automatically without water).
5. Please disconnect the power supply before maintaining and cleaning the machine.

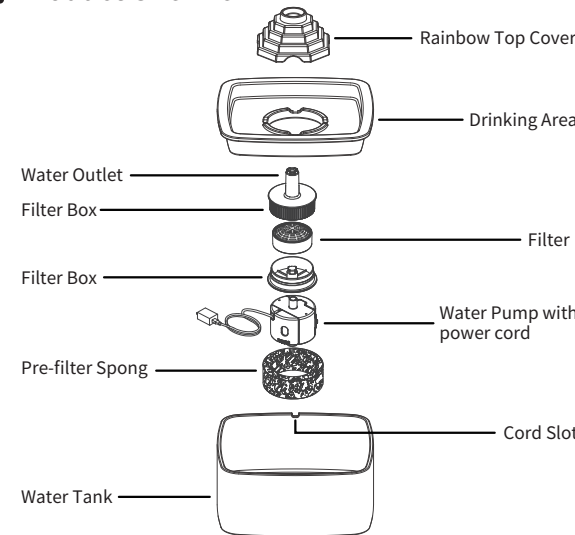
背面

Rianbow Automatic Water Fountain -1.5L Ceramics



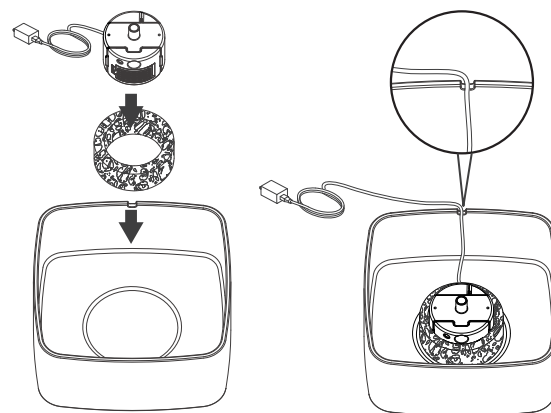
User Manual

Product Overview



How to Use

1 Install the pre-filter spong and the pump

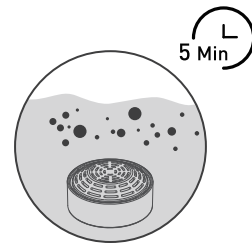


Insert the pump into the foam filter and set both down into the round inside the bowl. Press down so the suction cups attach.

The water pump USB cable goes through the cord slot.

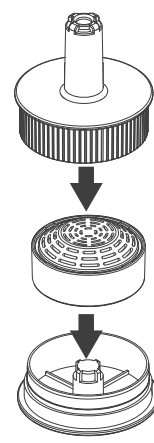
2 Install the filter

Step1: Soak the filter in a clean bowl for 5 minutes.

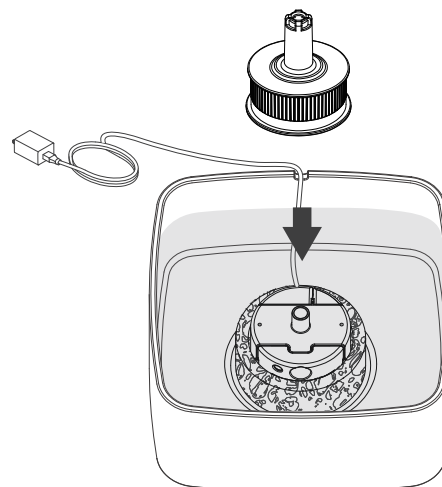


Notes:
1) Fully soak the filter before turning on the appliance; otherwise, water may not flow through the filter smoothly and cause spillage.
2) Do not soak the filter in the water tank of the fountain in case of any surface dust.

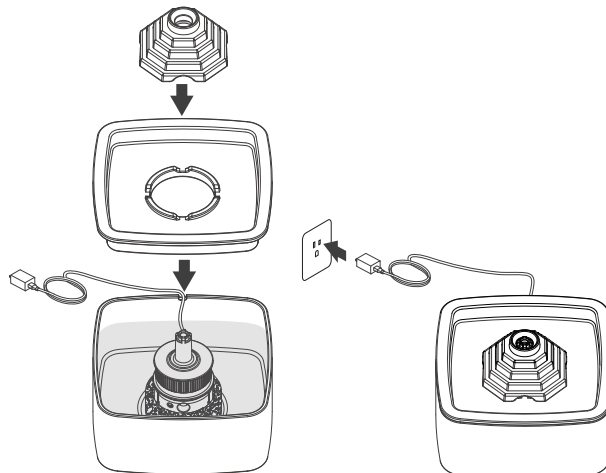
Step2: Put the filter in the filter box, and close the lid.



Step3: Install the filter box.



3 Install the water tray and rainbow top cover

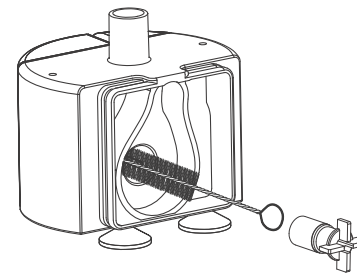
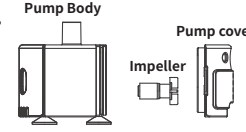


Put back the water tray and rainbow top cover to form a seal.

Connect the power adaptor.

To extend product life, please clean the pump every 2 weeks.

1. Remove the Pump Cover.
2. Clean the pre-filter grate with soap and warm water.
3. Remove the Impeller and clean the parts with soap and warm water.



Cautions

1. Be sure to shut down and disconnect the power supply for safety when the equipment is not in use.
2. This product is for indoor use only.
3. The power adaptor and wire plug must not be flooded during cleaning.
4. This product is not allowed to run without water (can be ignored for models with the function of outage automatically without water).
5. Please disconnect the power supply before maintaining and cleaning the machine.