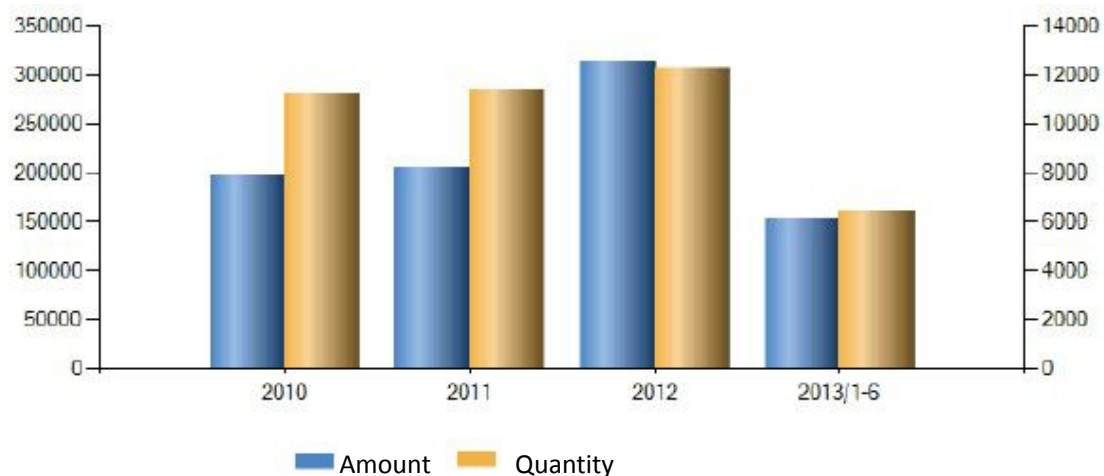


## Analysis of China's Export and Import Trade

Commodity Code: 67041900 (Hair products, beards, eyebrows and eyelashes)

Quantity Unit: Metric Ton; Monetary Unit: Thousand USD Dollars

Item	June, 2013			Jan-Jun, 2013		
	Quantity	Amount	Year-on-year %	Quantity	Amount	Year-on-year %
Total Exports and Imports	1295.79	29886.7	-6.45	6448.23	153254.03	5.68
Total Exports	1285.88	29749.79	-6.42	6370.09	152151.69	5.74
Total Imports	9.91	136.91	-11.57	78.14	1102.34	-1.79
Trade Gap	1295.79	29612.87	-6.4	6448.23	151049.35	5.8

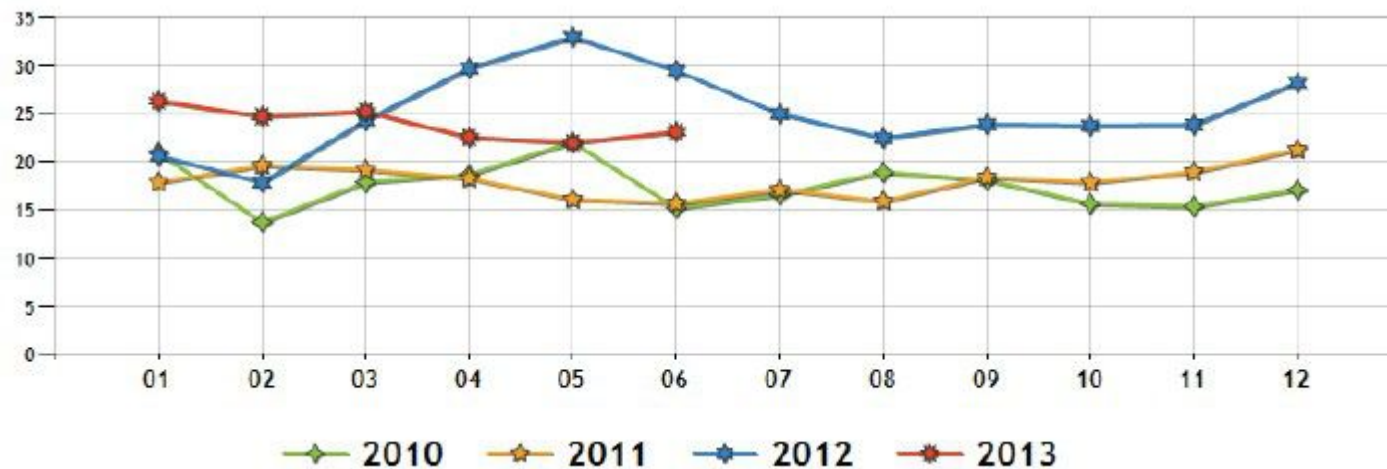


Jan-Jun, 2013, Commodity Code: 67041900 (Hair products, beards, eyebrows and eyelashes), China total exports and imports \$153254.03 thousand, increased by 5.68% over previous year; among which, total exports \$152151.69 thousand, increased by 5.74% over previous year; total imports \$1102.34 thousand, fell by 1.79% over previous year. June, 2013, total exports and imports \$29886.7 thousand, fell by 6.45% over previous year; among which, total exports \$29749.79 thousand, fell by 6.42% over previous year; total imports \$136.91 thousand, fell by 11.57% over previous year.

## Analysis of China's Export and Import Trade

2010-2013, Commodity Code: 67041900 (Hair products, beards, eyebrows and eyelashes), analysis of monthly average price trend.

Price unit: USD/Kg



Price unit: USD/Kg

	1	2	3	4	5	6	7	8	9	10	11	12
2010	20.94	13.75	17.88	18.68	22.06	15.22	16.58	18.93	18.13	15.66	15.37	17.09
2011	17.87	19.63	19.2	18.28	16.1	15.7	17.11	15.91	18.41	17.86	18.96	21.27
2012	20.66	17.88	24.31	29.75	32.97	29.5	25	22.49	23.92	23.77	23.87	28.23
2013	26.32	24.73	25.23	22.56	21.98	23.14	0	0	0	0	0	0

## Analysis of China's Export and Import Trade

Commodity Code: 67041900 (Hair products, beards, eyebrows and eyelashes), analysis of trading nations and areas

	Trading Nation/Area	Jan-Dec, 2012		June, 2013		Jan-Jun, 2013		Market Share	Market Trend
		Quantity	Amount	Quantity	Amount	Quantity	Amount		
	America	6,277.50	162,595.44	566.46	12,853.58	2,883.08	63,108.82	41.48	
	Nigeria	757.07	22,435.92	151.47	3,978.70	748.87	19,584.81	12.87	
	South Africa	1,086.14	19,407.84	141.95	3,627.35	725.65	13,828.41	9.09	
	Japan	265.35	14,568.17	15.24	994.83	126.43	9,294.03	6.11	
	Benin	222.07	10,847.98	14.74	859.07	80.86	5,711.77	3.75	
	Hongkong	319.54	17,976.04	43.04	1,185.62	145.28	4,903.82	3.22	
	Ghana	204.09	5,889.36	34.64	950.17	158.55	4,513.57	2.97	
	UK	320.12	8,679.11	28.78	933.07	142.90	4,014.14	2.64	
	Belgium	28.20	2,114.63	2.75	249.10	26.21	2,562.25	1.68	
	France	115.10	3,268.98	13.37	171.79	70.11	2,422.58	1.59	

Jan-Jun, 2013, commodity code: 67041900 (Hair products, beards, eyebrows and eyelashes), the first 5 nations/areas that China exported to: America, \$63108.82 thousand, accounts for 41.48%; Nigeria, \$19584.81 thousand, accounts for 12.87%; South Africa, \$13828.41 thousand, accounts for 9.09%; Japan, \$9294.03 thousand, accounts for 6.11%; Benin, \$5711.77 thousand, accounts for 3.75%.

## Analysis of China's Export and Import Trade

Commodity Code: 67041900 (Hair products, beards, eyebrows and eyelashes), analysis of market growth rate



Market Growth Rate %

Jan-Jun, 2013, commodity code: 67041900 (Hair products, beards, eyebrows and eyelashes), nations/areas with good export growth rate: Nigeria, growth rate 9.45%, market share rate 12.87%; South Africa, growth rate 4.88%, market share rate 9.09%; Ghana, growth rate 2.08%, market share rate 2.97%; Japan, growth rate 1.81%, market share rate 6.11%; Belgium, growth rate 1.63%, market share rate 1.68%. Nations/areas with negative export growth rate: Indian, growth rate -0.63%, market share rate 0.06%; Canada, growth rate -0.66%, market share rate 0.76%; Singapore, growth rate -1.33%, market share rate 0.04%; Hongkong, growth rate -3.93%, market share rate 3.22%; America, growth rate -18.36%, market share rate 41.48%.

## Analysis of China's Export and Import Trade

Commodity Code: 67041900 (Hair products, beards, eyebrows and eyelashes), analysis of production areas

Quantity Unit: Metric Ton; Monetary Unit: Thousand USD Dollars

NO	Production Area	June, 2013		Jan-Jun, 2013		Increase rate of last year same period	
		Quantity	Amount	Quantity	Amount	Quantity	Amount
1	Qingdao, Shandong Province	391.08	8600.88	1896.19	45539.85	19.24	39.06
2	Xuchang, Henan Province	256.13	7561.78	1139.81	35814.34	114.78	59.63
3	Jiaozhou, Shandong Province	91.32	2921.84	523.05	14651.67	183.16	186.23
4	Heze, Shandong Province	67.41	3534.34	288.45	14000	-21.3	-11.63
5	Weifang, Shandong Province	39.9	1090.38	268.3	7976.01	-40.15	-29.63
6	Jimo, Shandong Province	4.27	592.65	36.34	3392.47	-39.76	6.24
7	Yi'wu, Zhejiang Province	107.23	555.54	589.99	3239.37	21.08	1.04
8	Dezhou, Shandong Province	12.7	300.17	72.86	1894.69	284.06	270.07
9	Hechuan, Chongqing	0	0	14.39	1744.19	-86.19	-90.49
10	Nantong, Jiangsu	41.55	254.51	246.34	1592.47	96.09	169.06

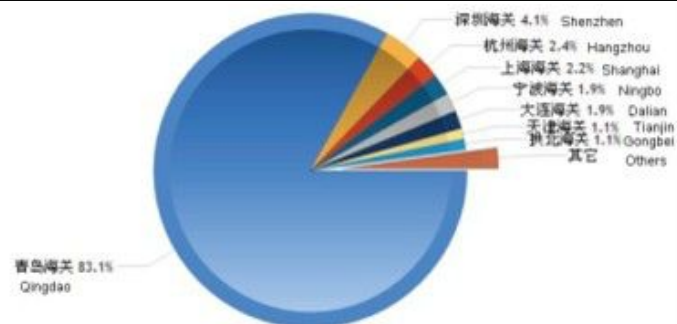
Jan-Jun, 2013, commodity code: 67041900 (Hair products, beards, eyebrows and eyelashes), the top five production area in China: Shandong province, total quantity 3,217.93 thousand kg, total amount \$90,328.13 thousand, average price \$28.07/kg; Henan province, total quantity 1,205.30 thousand kg, total amount \$38,293.45 thousand, average price \$31.77/kg; Guangdong province, total quantity 620.04 thousand kg, total amount \$4,515.05, average price \$7.28/kg; Zhejiang province, total quantity 702.27 thousand kg, total amount \$4302.42 thousand, average price \$6.13/kg; Liaoning province, total quantity 67.31 thousand kg, total amount \$4,255.59, average price \$63.23/kg.

## Analysis of China's Export and Import Trade

Commodity Code: 67041900 (Hair products, beards, eyebrows and eyelashes), analysis of customs locations

Quantity Unit: Metric Ton; Monetary Unit: Thousand USD Dollars

NO	Customs Location	June, 2013		Jan-Jun, 2013		Increase rate of last year same period	
		Quantity	Amount	Quantity	Amount	Quantity	Amount
1	Qingdao Customs	892.37	25128.68	4393.75	126513.02	29.99	30.29
2	Shenzhen Customs	116.56	1241.59	623.58	6183.22	-19.45	-80.2
3	Hangzhou Customs	106.72	784.57	558.44	3707.09	41.01	73.66
4	Shanghai Customs	46.27	513.07	211.1	3401.68	8.16	-10.61
5	Ningbo Customs	54.12	692.03	166	2909.14	-39.78	9.62
6	Dalian Customs	11.75	459.95	49.54	2861.88	-29.68	40.79
7	Tianjin Customs	4.42	211.58	43.13	1668.68	24.88	6.14
8	Gongbei Customs	5.36	286.13	33.52	1650.6	13.83	82.43
9	Nanjing Customs	30.09	192.94	186.61	1285.21	144.44	232.15
10	Guangzhou Customs	10.94	132.86	59.21	863.74	-37.34	-8.71

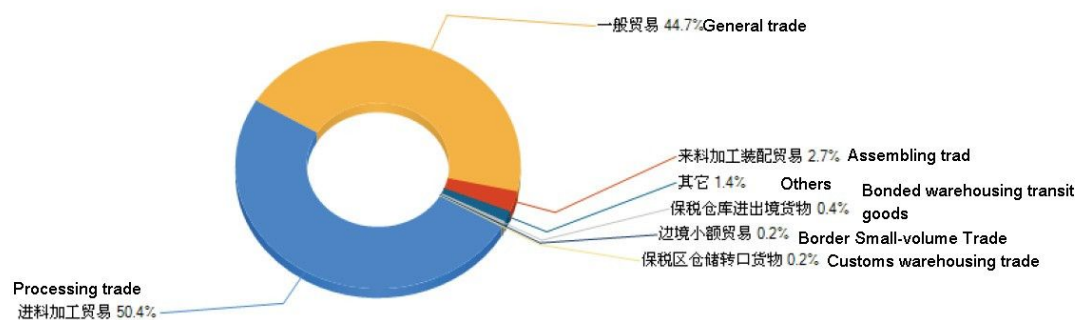


Jan-Jun, 2013, commodity code: 67041900 (Hair products, beards, eyebrows and eyelashes), the top five customs locations: Qingdao customs, total quantity 4,393.75 thousand kg, total amount \$126,513.02 thousand; Shenzhen customs, total quantity 623.58 thousand kg, total amount \$6,183.22 thousand; Hangzhou customs, total quantity 558.44 thousand kg, total amount \$3,707.09 thousand; Shanghai customs, total quantity 211.10 thousand kg, total amount \$3,401.68, thousand; Ningbo customs, total quantity 166.00 thousand kg, total amount \$2,909.14 thousand.

## Analysis of China's Export and Import Trade

Commodity Code: 67041900 (Hair products, beards, eyebrows and eyelashes), analysis of trading types

NO	Customs Location	June, 2013		Jan-Jun, 2013		Increase rate of last year same period	
		Quantity	Amount	Quantity	Amount	Quantity	Amount
1	Processing trade	519.8	14412.05	2863.88	76628.52	12.77	11.73
2	General trade	507.82	13994.74	2114.58	68057.82	36.94	-0.12
3	Assembling trade	133.01	646.52	758.15	4089.6	1.74	-0.45
4	Others	95.67	392.54	514.12	2149.48	36.12	30.75
5	Customs warehousing trade	19.45	189.67	94.37	656.51	-37.95	-40.73
6	Border Small-volume Trade	1.01	6.06	10.26	297.56	4.25	112.97
7	Bonded warehousing transit goods	9.12	108.22	14.73	272.19	203.05	58.62

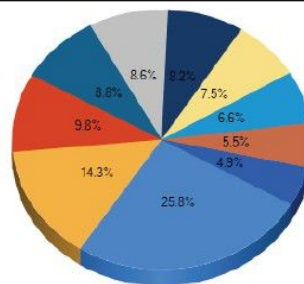


Jan-Jun, 2013, commodity code: 67041900 (Hair products, beards, eyebrows and eyelashes), main export trading types: Processing trade, total quantity 2,863.88 thousand kg, total amount \$76,628.52 thousand; General trade, total quantity 2,114.58 thousand kg, total amount \$68,057.82 thousand; Assembling trade, total quantity 758.15 thousand kg, total amount \$4,089.60 thousand; others, total quantity 514.12 thousand kg, total amount \$2,149.48 thousand; Customs warehousing trade, total quantity 94.37 thousand kg, total amount \$656.51 thousand;

## Analysis of China's Export and Import Trade

Commodity Code: 67041900 (Hair products, beards, eyebrows and eyelashes), analysis of trading companies

NO	Company	June, 2013	Jan-Jun, 2013	Increase rate of last year same period
		Quantity	Quantity	Quantity
1	Henan Rebecca Hair Products. Inc.	162.2	737.88	38131.87
2	Shandong Haichuan Hair Co., Ltd	94.06	407.74	-37.07
3	Qingdao Qingyuan Hair Co., Ltd	54.58	280.06	12.13
4	Shenzhen Foreign Economic Development Co., Ltd	35.76	251.14	27.37
5	Jingyuan (Nantong) Chemical Fibre Co., Ltd	41.55	246.31	96.22
6	Qingdao Zhenyi Wig Ware Co,ltd	41.56	235.39	70.65
7	Heze Oscar Hair Products Co., Ltd	51.69	213.98	-28.36
8	Qingdao Zhongyu Hair Products Co., Ltd	22.4	187.07	-0.95
9	Weifang Dinuo Trading Co., Ltd	39.16	157.15	-39.94
10	Qingdao Hai Hua Cheng Arts & Crafts Co., Ltd	17.34	138.88	3554.84



Jan-Jun, 2013, commodity code: 67041900 (Hair products, beards, eyebrows and eyelashes), total export quantity and market share of China top 10 trading companies: Henan Rebecca Hair Products. Inc., total quantity 737.88 thousand kg, Shandong Haichuan Hair Co., Ltd, 407.74 thousand kg, Qingdao Qingyuan Hair Co., Ltd, 280.06 thousand kg, Shenzhen Foreign Economic Development Co., Ltd, 251.14 thousand kg, Jingyuan (Nantong) Chemical Fibre Co., Ltd 246.31 thousand kg, Qingdao Zhenyi Wig Ware Co,ltd, 235.39 thousand kg, Heze Oscar Hair Products Co., Ltd, 213.98 thousand kg, Qingdao Zhongyu Hair Products Co., Ltd, 187.07 thousand kg, Weifang Dinuo Trading Co., Ltd, 157.15 housand kg, Qingdao Hai Hua Cheng Arts & Crafts Co., Ltd, 138.88 thousand kg



